



# BP Whiting Crude Oil

## Discharge

March 24, 2014



# Case Summary



- 24Mar – oil discovered on the surface of the #6 separator and the surface of the lake beyond the outfall
- Contractors hired to remove oil from the shore, lake, and #6 separator
- High estimate for material discharged = 39 barrels



# #6 Once Through Cooling System





# Timeline



24 Mar – Initial incident and response

25-26 Mar – Recovery of spilled oil

27 Mar – 01 Apr – Maintenance of shoreline

08 Apr – Intermediate SCAT walk

15 Aug – Final SCAT sign off





03/24/2014



03/24/2014





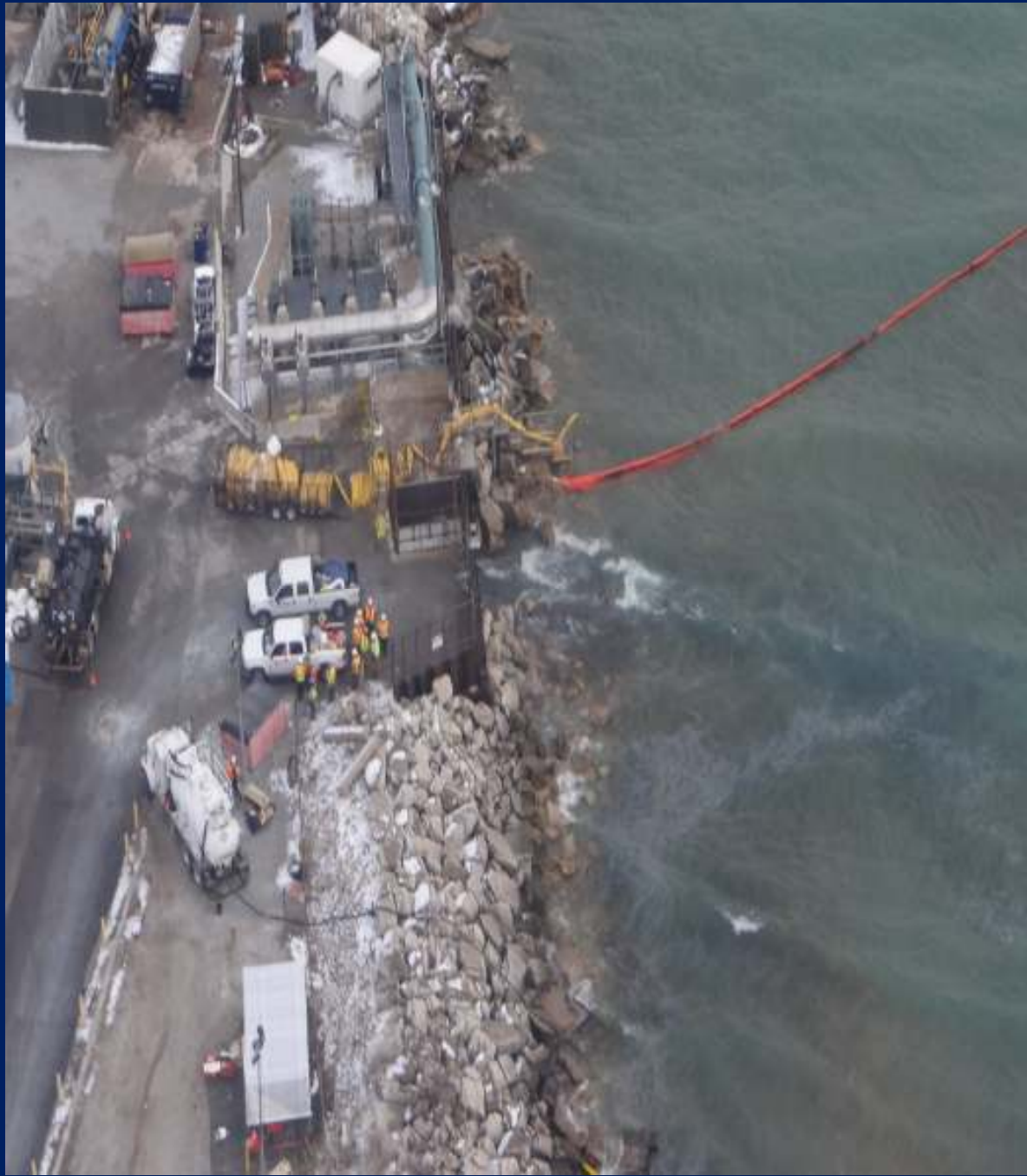


# Response Resources



- 1500-ft hard boom at outfall
- 3000-ft hard boom closing the cove
- 14 vacuum trucks
- 2500-ft absorbent boom
- 1000-ft absorbent pads
- 82 response personnel (IMT & Field)









# MSU Activities



## Resources:

- 8 personnel on-site
- 2 FOSCR's
- 3 B/I Pollution Responders
- 166 total man hours (est)

## Operations:

- Pollution investigation
- SCAT
- FOSCR
- Response strategies



# EPA Activities

## Resources:

- 7 EPA personnel on-site
- 2 ERT (not on-site)
- 2 START
- 355 total man hours (est)

## Operations:

- Technical Advisers
- SCAT
- FOSC
- Response strategies





03/29/2014









# Lessons Learned

- Early establishment of UC
- Clear delineation of authority at a response in the coastal zone
- Cross training between EPA and USCG needs to happen regularly
- OSLTF fund usage clarification (RP led response specifically)
- Unified voice for media release (we have the answers, ensure they are provided)





Questions?  
MSU Response Division  
630-986-2155