



**Marathon
Petroleum Company LP**



**Multi-Jurisdiction
PREP Exercise - case study**
Hilton Ballpark, St. Louis
August 25-27, 2015

Background



- Marathon Petroleum has been moving toward ever more complex exercises.
- With DWH and Enbridge-Marshall releases, the bar had been raised a magnitude, or more. It also opened up opportunities to practice Unified Command.
- Past RRT discussions indicated some interest on border spills. Also build on a recent spill.
- Annual drill meets PREP requirement, provides training through practice opportunity, and allows Marathon Petroleum to measure itself against the global response community.

History – Yearly Top Tier Team Tabletop



- **Earthquake Drill, Robinson, IL 2006**
- **SONS 07, Evansville Venue sponsor 2007**
- **Houston, Hurricane Drill 2008**
- **Multi-region Nexus, Huntington, WV 2009**
- **Offshore Blowout, Lafayette, LA 2010**
- **Multi-location Drill, Tampa & New Orleans 2011**
- **Multi-business Unit Drill, Galveston, TX 2012**
- **Security/Cyber/Spill Exercise, Canton, OH 2013**
- **Multi location Drill, Memphis and Baton Rouge 2014**

Exercise Overview



- Cross-Jurisdiction, Multi-incident
 - Multiple releases, caused by windstorm
 - Tank valve failure causes Cold Lake Crude Release
 - Barge collision results in Cold Lake Crude Release
 - Both plumes join in the Mississippi river
- EPA and USCG brought nearly full IMT's
- One planning cycle over 19 hours of drill play (slow play)
- Debrief after each meeting
- Organization and section specific goals
- One press conference



Planning the Exercise

- HSEEP lite – More meetings, more overlap in agenda
- Planning meetings held at Hilton Ballpark.
- Incorporating special design elements into exercise
 - Multi agency
 - Multi region
 - Three IMT's
 - Two states
 - Salvage effort



Planning, continued



- USEPA
- USCG
- Missouri DNR
- Illinois EPA
- St Louis Co OEM
- St. Louis City EMA
- OSRO – ER LLC
- Salvor – T&T Salvage
- Marathon Pipeline
- MPC Marine
- MPC Corporate





Exercise Scenario

- Hartford, IL Tank Farm
 - Wind driven debris breaks a valve bonnet on tank
 - Gopher hole, ditches, Cahokia Canal, Mississippi River
- Barge
 - Runaway Stone Barges causes collision
 - Oil Barge holed and grounded on Missouri bank of Mississippi River

Overview



Tank Farm

Dock

The Timeline



- **T-8hrs: Wind event causes Tank leak**
- **T-3hrs: Barge collision**
- **T-0hr: Simulated 201 briefing**
- **T+2hrs: UC Meeting**
- **T+4hrs: start the injects**
- **T+5hrs: Command and General staff Meeting**
- **T+10hrs: Dead body floats into containment**
- **T+15hrs: Press Conference**
- **T+17hrs: IAP delivered**
- **T+18hrs: Ops Briefing End Ex**
- **T+20hrs: Critique/Hotwash**



IMT Objectives

- Annual Tier 3 IMT Exercise is practice for an all volunteer team
- Integrate 3 IMT's
- Work one complete planning cycle
- Involve Federal, State, Local, and NGO
- Initial effort on Salvage plan

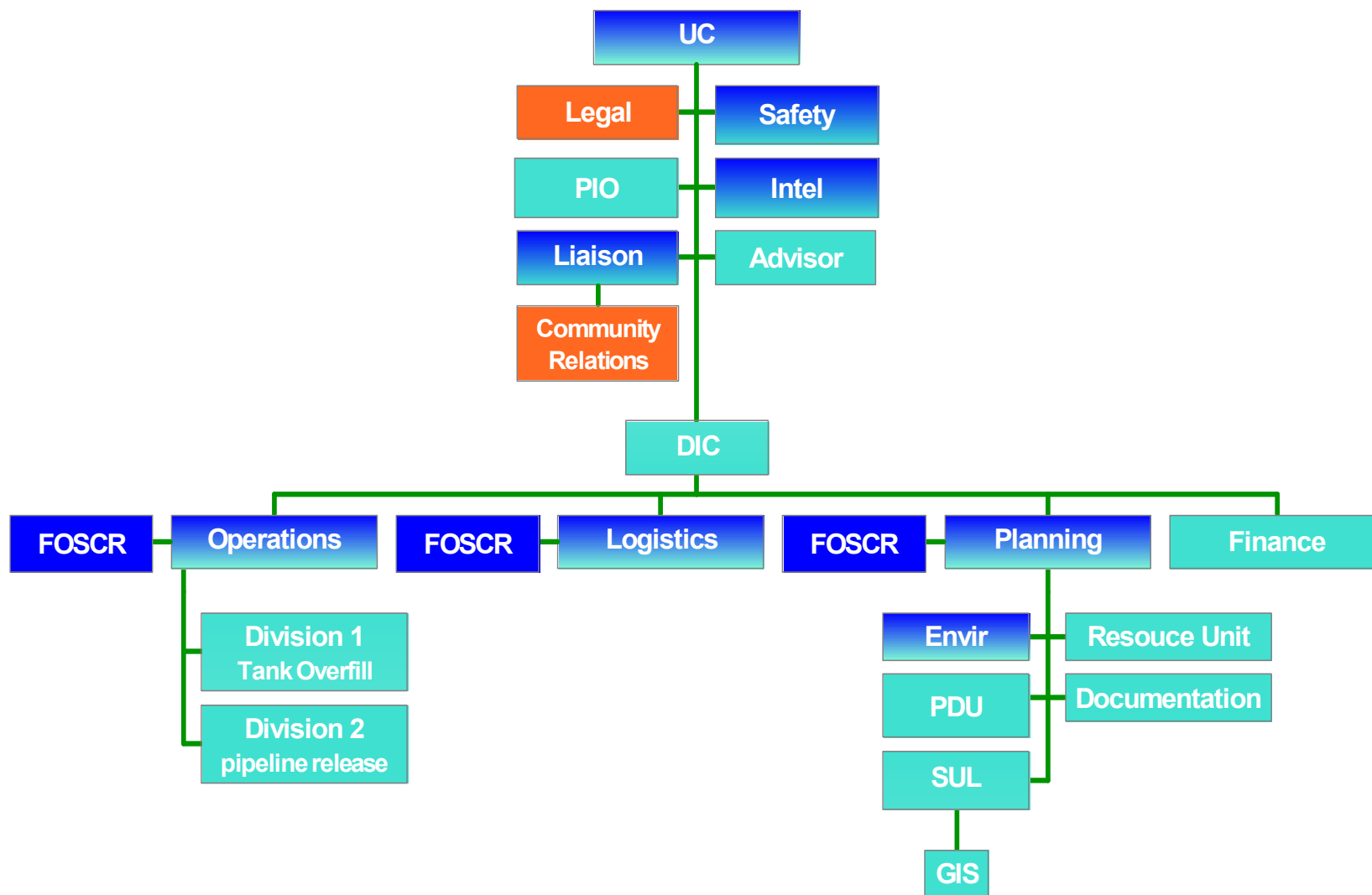


Artificialities



- 24-hour broken daylight (time separation)
- Quick start
- Early pull for information and UC drift
- Size of the IMT
 - Budget concerns allow only one exercise per year
 - Two shifts – rotate leads
- No weather effects

Tier 3 Structure w/ Unity of Response



Things that Went Well



- Location/Facility
- Integration of IMT's
- Higher level Training pays dividends
- More sophisticated Simcell
- Balance of stress and simulation is close
- Handing VIP's
- Planning Committee Enthusiasm
- Qualification sign-offs
- Software ease of use

Opportunities for Improvement



- Keep pushing the training (position specific and software)
- Utilize more SME's in SimCell
 - Enhanced air monitoring presentation
- Recruit an NGO for volunteer management
- Information flow to Sit Stat is klunky and incomplete
- Enhanced sit stat board

Improvements, cont.

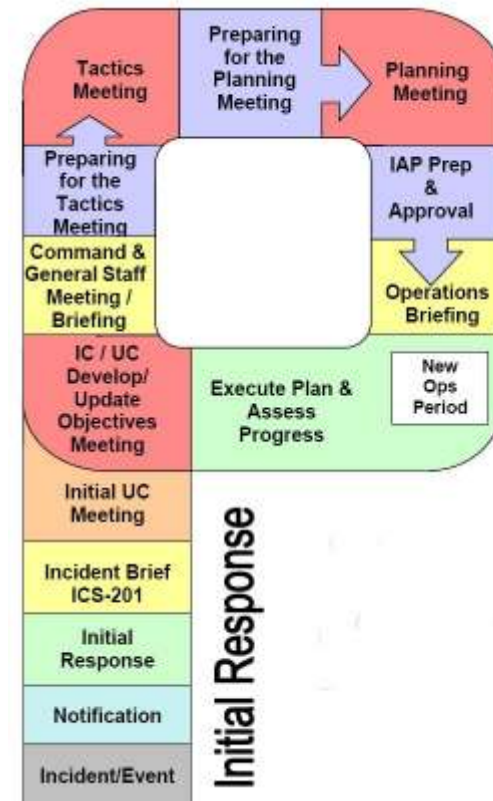


- Data Management System
- PRFA's ;-)

The Exercise Stats



- 7 member Unified Command
- Two-and-one-half days spent in exercise
- 213 participants representing 23 organizations
- 1 Full planning cycle
- 2800 feet of Cat5 cable
- Equipment display by OSRO



Summary



- Drill planning process A-
 - Need more engagement by locals
- Marathon IMT A-
 - Improving through higher level training
 - Continue training to a higher savviness in national response system
- Unified Command, Plans, JIC, OPS, Environmental A+

Marathon Petroleum thanks:



- USCG
- USEPA
- NOAA
- IEPA
- IDNR
- MDNR
- County of St. Louis
- City of St. Louis (EMA & PD)
- Environmental Restoration
- T&T Salvage
- Tristate Bird Rescue
- HP
- EMSI
- WPNT
- The Response Group
- GRS
- URS
- Arcadis
- CTEH
- Blackbox
- Foster Wheeler



Pat McCaffrey
psmccaffrey@marathonpetroleum.com
419-421-3058