

**SAMPLING AND ENHANCED MONITORING
OPERATIONS PLAN
SUPER BOWL XLVI
LUCAS OIL STADIUM
INDIANAPOLIS, INDIANA
FEBRUARY 5, 2012**



SAMPLING AND ENHANCED MONITORING OPERATIONS PLANNING TEAM

Rex Bowser
IRSO, Division Director
Indiana State Department of Health

James Cash
Science Officer
53rd CST/WMD

Dave Dotson
Virology/Emergency Preparedness and Division Director
Indiana State Department of Health

Laura Dresen
CBRNE Programs Section Chief
Indiana Department of Homeland Security

Mike Gavelek
Nuclear Specialist - HMSRU
Federal Bureau of Investigation

Shelly Lam
Federal On-Scene Coordinator
U.S. Environmental Protection Agency

Jeff Larmore
Manager Hazardous Materials
Marion County Public Health Department

Max Michael
Section Chief - Office of Land Quality/Compliance and Response Branch
Indiana Department of Environmental Management

Christine Van Horn
Regional Response Coordinator
U.S. Department of Energy

For Official Use Only

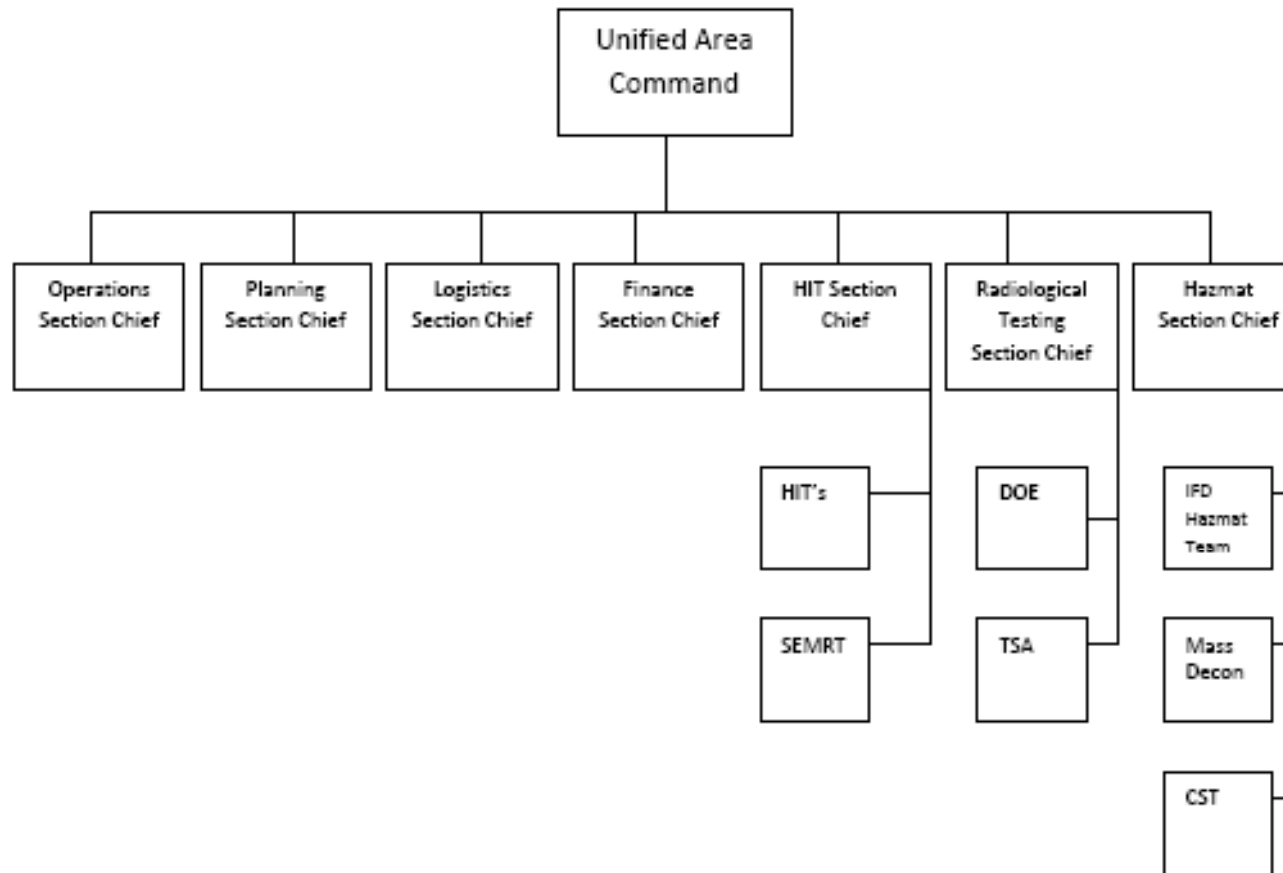
SAMPLING AND ENHANCED MONITORING MISSION SUMMARY

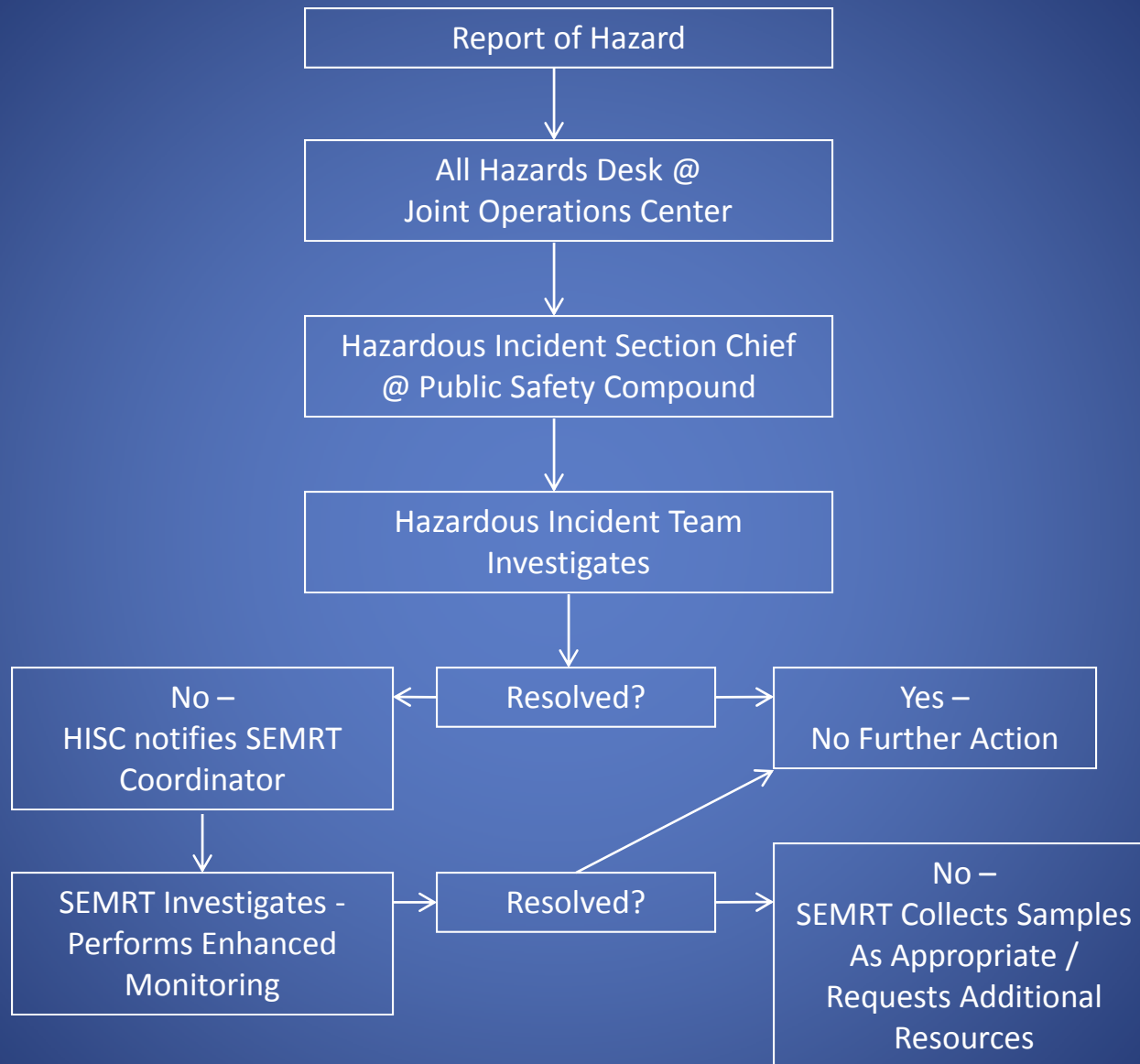
SEM operations will support the Hazardous Incident Teams (HIT) in the effort to characterize possible Chemical, Biological, Radiological, and Nuclear (CBRN) hazards in a cohesive, rapid manner.

The Sampling and Enhanced Monitoring Response Team (SEMRT) will respond to requests from the Hazardous Incident Section Chief to perform enhanced monitoring/field screening for the presence CBRN hazards and will collect samples as appropriate for additional laboratory analysis.

Members of the SEMRT will include CBRN subject matter experts (SME) from the U.S. Department of Energy (DOE), U.S. Environmental Protection Agency (EPA), and the Federal Bureau of Investigation (FBI). State and local response agencies will provide staff for sample collection and enhanced monitoring to complete the SEMRT.

**Figure 3
Organization Chart**





For Official Use Only

BioWatch Special Event Sampling

