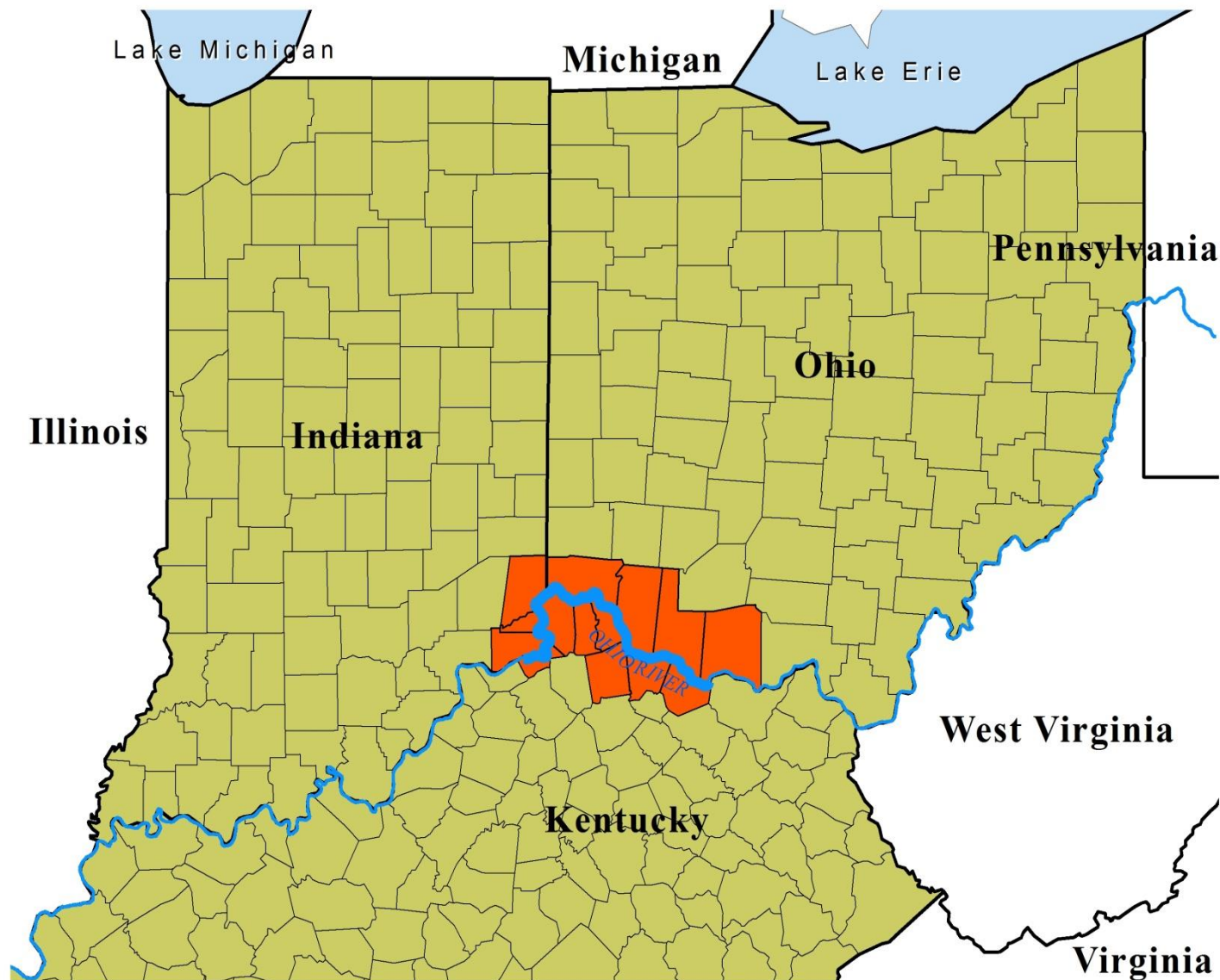




U.S. EPA REGION 5 OHIO RIVER - CINCINNATI SUB-AREA SPILL RESPONSE PLAN (2020 Update)

INITIAL INCIDENT ACTION PLAN (IAP)

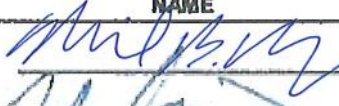








This Initial Incident Action Plan is developed to aid in initiating a timely and effective response to spills of oil and other hazardous materials originating from either Indiana or Ohio along the Ohio River (including its tributaries) between Ohio River mile markers 401.3 to 531.5. It is intended to be used during Operational Periods 1 and 2 of response only at the discretion of the Incident Commander. It is not intended to supersede the direction of the Incident Commander or eliminate the need for ongoing communication during a response.

LETTER OF PROMULGATION

Ohio River – Cincinnati Sub-Area Spill Response Plan

1. **Purpose.** The Ohio River – Cincinnati Sub-Area Spill Response Plan provides updates on area information, specific response organization, and detailed plans for the containment, cleanup and disposal of oil and hazardous substance discharges and releases.
2. **Publications Affected.** This plan is effective immediately and supersedes all previous editions of the Ohio River – Cincinnati Sub-Area Spill Response Plan.
3. **Discussion.** This plan includes information on general authorities; national, state, and local response policy; assignment of responsibility for cleanup; multi-agency response organization; unified command including operations, planning, logistics, and finance/administration sections; agency contact lists; response strategies; site safety; chemical countermeasures; in-situ burning; and hazardous substances release response.
4. **Action.** All relevant federal agencies, state agencies, local agencies, commercial spill response contractors, environmental stakeholders and responsible parties are encouraged to be guided by this plan during pollution response efforts, regardless of size or scope.

ORG	NAME	DATE/TIME
USCG		4/21/17
ER SECTION		3/31/17
OEPA SW OSC		4/5/17
KY DEP		4/20/17
EPA R4		4/5/17
EPA R5		3/31/17
ORSANCO		4/3/17
	United States Coast Guard	
	Indiana Department of Environmental Management (IDEM)	
	Ohio Environmental Protection Agency (OEPA)	
	Kentucky Department of Environmental Protection (KYDEP)	
	US Environmental Protection Agency (USEPA) Region IV	
	US Environmental Protection Agency (USEPA) Region V	
	Ohio River Valley Water Sanitation Commission (ORSANCO)	

Ohio River - Cincinnati Sub-Area Spill Response Plan INITIAL INCIDENT ACTION PLAN

EXECUTIVE SUMMARY

In order to best prepare for oil and hazardous material spills originating from either Indiana, Kentucky or Ohio, along the Ohio River (including its tributaries) between Ohio River mile marker 401.3 to 531.5, an interagency team comprised of representatives from the U.S. Environmental Protection Agency (U.S. EPA), U.S. Coast Guard (USCG), Indiana Department of Environmental Management (IDEM), Ohio Environmental Protection Agency (Ohio EPA), Kentucky Department of Environmental Protection (KDEP), the Ohio River Valley Water Sanitation Commission (ORSANCO) and other federal, state, local agencies, and private sector, identified the need for a specialized planning document that would: 1) describe the roles that agencies and other entities would likely play in an incident, and 2) give responders a mechanism to help organize both in advance and during a response. This planning tool would also help multiple agencies to coordinate their operations and resources and make effective and efficient use of their personnel, supplies and time.

The objective is to promote timely and effective coordination among the entire spill community, including Federal, state, local and private entities in response to an oil discharge or hazardous substance release along the Ohio River – Cincinnati Area (Ohio River mile marker 401.3 to 531.5) or within a major tributary leading to the Ohio River.

The scope of this document involves discharges of oil into or on the navigable waters of the U.S. and releases into the environment of hazardous substances and pollutants or contaminants that may present an imminent and substantial danger to public health or welfare.

To help meet these needs, the enclosed Response Checklist and initial Incident Action Plan (IAP) document was created in 2012. The plan has been tailored to identify the Incident Command System (ICS) forms most likely to be initially used in an Ohio River response and includes potential objectives as well as a detailed emergency contact list. The plan provides a concise and coherent means of capturing and communicating the overall incident priorities, objectives and strategies in the context of both operational and support activities.

The response plan was developed to aid the implementation of the ICS. During an incident, the ICS emphasizes orderly and systematic planning, and this Response Checklist and initial IAP are intended to be the central tool for planning during the Operational Period #1 of response at the discretion of the Incident Commander (IC). The plan is not intended to supersede the direction or authority of the IC, or to preclude communication or flexibility in response. The level of detail required in an Incident Action Plan will vary according to the size and complexity of the response. After the Operational Period #2 of an incident, it is expected that this IAP will be superseded by a response specific IAP as needed.

The response plan was developed to be consistent with, and support, existing plans and procedures including the U.S. EPA Region 5 RCP/ACP, U.S. EPA Region 4 Ohio River Umbrella Plan, Mill Creek Response Plan, state response plans and local response plans.

TABLE OF CONTENTS

Background Incident Action Planning “P” -----	IAP-5
Agency General Spill Roles and Responsibilities -----	IAP-6
IAP Template Forms	
1. Initial Response Checklist----- (ICS Form 234)	IAP-10
2. Incident Action Plan Cover Sheet----- (ICS Form 200)	IAP-11
3. Incident Objectives----- (ICS Form 202)	IAP-12
4. Incident Organization Chart----- (ICS Form 207)	IAP-13
5. Assignment List----- (ICS Form 204)	IAP-14
6. Incident Communication Plan----- (ICS Form 205)	IAP-23
8. Emergency Contact List-----	IAP-24
9. Medical Plan----- (ICS Form 206)	IAP-26
10. Health and Safety Message----- (ICS Form 223)	IAP-27
 Attachment 1 – Indiana, Kentucky and Ohio Inland Sensitivity Maps	
Attachment 2 – Ohio River Watershed Response Plan	
Attachment 3 – Links to Response Plans	
Attachment 4 – Overview Map of Area of Response	
Attachment 5 – GCHMCCU Response Trailers	
Attachment 6 – RRT5 In-Situ Burning Annex Requirements	

LIST OF ACRONYMS

CPO	Conservation Police Officer
CWA	Clean Water Act
DHS	Department of Homeland Security
DOI	Department of Interior
EMA	Emergency Management Agency
ERU	Emergency Response Unit
FOSC	Federal On-Scene Coordinator
GCHMCC	Greater Cincinnati Hazardous Material Control Committee
GCHMU	Greater Cincinnati Hazardous Materials Unit
IAP	Incident Action Plan
IC	Incident Commander
ICS	Incident Command System
IMT	Incident Management Team
IDEM	Indiana Department of Environmental Management
IN DNR	Indiana Department of Natural Resources
KDEP	Kentucky Department of Environmental Protection
KDF&W	Kentucky Department of Fish & Wildlife
KYEM	Kentucky Emergency Management
LDB	Left Descending Bank
LEPC	Local Emergency Planning Committee
MM	Mile Marker
MSD	Marine Safety Detachment
NPS	National Parks Service
NRC	National Response Center
NRDAR	Natural Resource Damage Assessment & Restoration
ODNR	Ohio Department of Natural Resources
Ohio EPA	Ohio Environmental Protection Agency
OPA	Oil Pollution Act
ORSANCO	Ohio River Valley Water Sanitation Commission
OSC	On-Scene Coordinator
RCP	Regional Contingency Plan
RDB	Right Descending Bank
RP	Responsible Party
RRT	Regional Response Team
SHPO	State Historic Preservation Officer
USACE	United States Army Corps of Engineers
USCG	United States Coast Guard
U.S. EPA	United States Environmental Protection Agency
USFWS	United States Fish & Wildlife Service

BACKGROUND INCIDENT ACTION PLANNING “P”

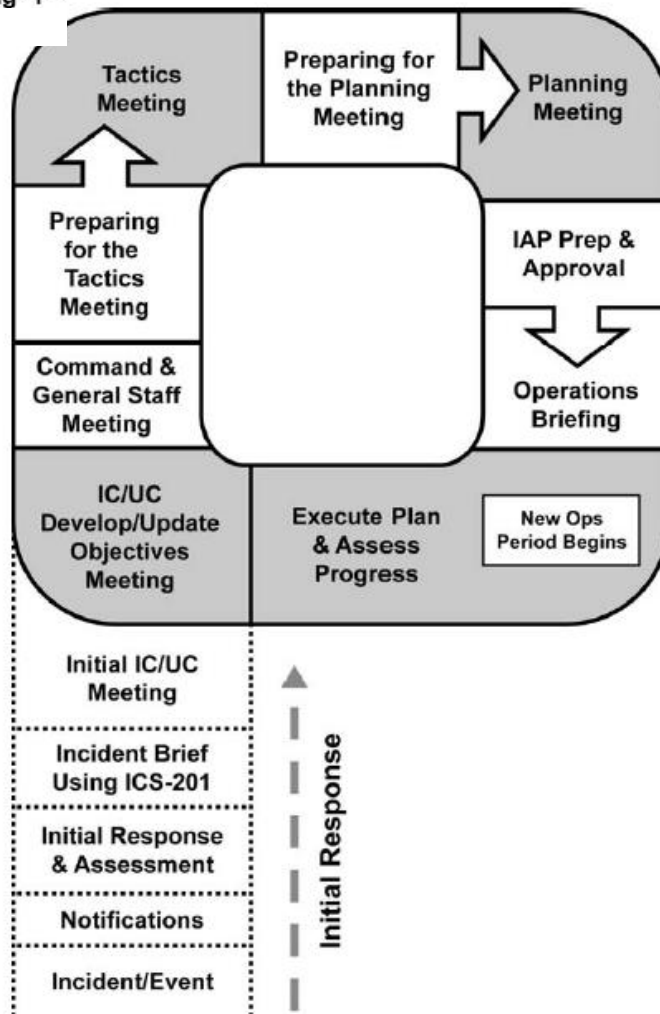
Incident Action Planning Process

In the Incident Command System (ICS), considerable emphasis is placed on developing effective Incident Action Plans (IAP). A planning process has been developed as a part of the ICS to assist planners in the development of a plan in an orderly and systematic manner. Not all incidents require detailed written plans. Recognizing this, the following planning process provides a series of basic planning steps, which are generally appropriate for use in any incident situation. The determination of the need for written IAPs and attachments/forms is based on the requirements of the incident and the judgment of the Incident Commander (IC). The Planning Section Chief prepares the IAP with input from the appropriate sections and units of the Incident Management Team (IMT). The IAP should be written at the outset of the response and revised continually throughout the response.

The diagram below shows the process and steps involved to develop an IAP. The initial IAP included in this document is intended to help guide a response through Operational Periods #1 and #2 of an incident on the Ohio River – Cincinnati Area (between Ohio River mile markers 401.3 to 531.5).

The Planning Cycle and Daily flow of events:

The Planning “P”



Agency General Spill Roles and Responsibilities for the Ohio River - Cincinnati Sub-Area Spill Response Plan

Local Agencies	General Roles and Responsibilities
Responsible Party/Facility/Industry	<p>The spiller, or responsible party (RP), has the primary responsibility to conduct spill cleanup, following the procedures listed in the facility and/or vessel response plan. The first response action of the RP is making notification of an incident to appropriate other responders of the incident, according to law and the RP's own response plan. The RP conducts whatever response actions are necessary and for which their personnel are trained and equipped. The RP is required to have authorized and qualified individuals available 24 hours a day to respond to a spill. The RP should also have sufficient funds available to cover the cost of pollution response to the limit of liability for the vessel or facility. As the priorities of an incident evolve, they often include off-site and environmental concerns. The RP has the lead role in responding to these concerns, under the oversight of state or federal agencies. The RP is also liable for restoring or replacing natural resources which may be injured or lost due to the spill, and should coordinate with the natural resource trustees (via the Natural Resource Damage Assessment & Restoration (NRDAR) Liaison in the IC) as part of the NRDAR process. The RP will be represented at the command level of the response organization to represent their interests and to help coordinate assets and response actions. The RP should conduct inquiries into the cause of an incident. This is often done with the participation or oversight of state or federal agencies such as the Occupational Safety and Health Administration, USCG or Department of Transportation. The RP should conduct a critique of their response to an incident and revise prevention, preparedness, and response measures accordingly. If the RP does not respond properly, the On-Scene Coordinator (OSC) shall take appropriate response actions and should notify the RP of the potential liability for federal response costs incurred by the OSC pursuant to the Oil Pollution Act (OPA) and the Clean Water Act (CWA).</p>
Local Fire, Police, Sheriff & the Hazardous Materials Response Teams (Cincinnati Fire Department & GCHMU)	<p>Local units of government typically have the primary role in protecting the public's safety and property from a spill through police and fire department response. During the initial stages of an incident, when life and safety issues are paramount, local officials (Fire/Police/Sheriff) will be "in charge" of the response to an incident until such time that they decide to enter into a Unified Command.</p> <p>The Local Hazardous Materials Teams' role is to assist in protecting life, property and the environment in the event of a hazardous materials or petroleum-related spill or release. The teams can provide specialized services and resources in the response to releases of hazardous materials and weapons of mass destruction to the Ohio-Kentucky-Indiana metropolitan area, in cooperation with their emergency responders.</p> <p>Of the 7 counties that GCHMU responds to, the following 4 counties are covered under this IAP: Dearborn and Ohio counties in Indiana; and Hamilton and Clermont counties in Ohio. The Cincinnati Fire Department Hazardous Materials Team responds to spills and releases within in the city, and to surrounding jurisdictions upon request.</p> <p>GCHMU is dispatched through the Hamilton County Communications Center and must be requested by the Fire Department IC. The GCHMU will never self-dispatch. The Cincinnati Fire Department Hazardous Materials Team is dispatched by the Cincinnati Emergency Communications Center.</p>
Counties & Emergency Management (Indiana, Ohio and Kentucky)	<p>During the response and recovery stages of an event, the County Emergency Management acts as a liaison between federal, state, and local units of government to promote speedy access to emergency resources and recovery funding.</p> <p>The three Indiana counties that are included in this plan are Dearborn (Ohio River Mile Marker [MM] 490.0 to 498.8), Ohio (Ohio River MM 498.8 to 509.9) and Switzerland (Ohio River MM 509.9 to 546.4) counties.</p> <p>The four Ohio counties that are included in this plan are Hamilton (Ohio River MM 455.2 to 490.0), Clermont (Ohio River MM 429.5 to 455.2), Brown (Ohio River MM 405.5 to 429.5) and Adams (Ohio River MM 374.7 to 405.5) counties.</p> <p>The seven Kentucky counties that are included in this plan are Gallatin (Ohio River MM 516.6 to 535.0), Boone (Ohio River MM 477.5 to 516.6), Kenton (Ohio River MM 470.2 to 477.7), Campbell (Ohio River MM 443.7 to 470.2), Pendleton (Ohio River MM 440.3 to 443.7), Bracken (Ohio River MM 421.0 to 440.3) and Mason (Ohio River MM 401.5 to 421.0) counties.</p> <p>The primary role of the counties is to provide management through direct supervision and responsibility of emergency management, Local Emergency Planning Committee (LEPC), and information systems that provide for the exchange of information between police, fire, emergency medical, and emergency management response services.</p>
Greater Cincinnati Hazardous Material Control Committee (GCHMCC)	<p>GCHMCC is a not-for-profit organization comprised of various companies and public agencies with the common interest of providing assistance and resources to its membership, mitigating the impact of pollution releases, and promoting maritime security awareness in and along the Ohio River and its surrounding tributaries, which affect the Greater Cincinnati, Ohio region. There are currently thirty-seven members at the GCHMCC.</p> <p>There are three levels of membership: Class I members who are the voting members of the various production facilities in the Greater Cincinnati area; Class II members - the associate members that have an interest in protecting the river and its tributaries facility; and Class III members who are employees in any government agency interested in the purpose of the GCHMCC.</p> <p>The GCHMCC owns three 7-foot by 14-foot enclosed spill response trailers. The trailers contain all the equipment necessary to begin a response in case of accidental oil discharge at the member's facility (Attachment 5). Each Class I member has a key and access to the trailers 24 hours a day, 7 days a week. Unit 1 is stored at Peter Cremer NA, 3117 Southside Ave, Cincinnati, OH 45204; (513) 471-7200. Unit 2 is stored at BP Oil, 409 River Rd, Bromley, KY 41017; (859) 261-8605. Unit 3 is stored at Marathon, 4700 Este Ave, Cincinnati, OH 45232; 513-482-8802.</p>

Local Agencies	General Roles and Responsibilities																					
Greater Cincinnati Water Works (GCWW)	<p>Greater Cincinnati Water Works (GCWW) is a municipal drinking water system supplying water to approximately 1 million people in the Greater Cincinnati area. GCWW relies on the Ohio River for approximately 85% of its water supply. GCWW has two intakes located at Ohio River Mile (ORM) 462.8 off the Left Descending Bank (Kentucky side). One of the two intakes can be viewed from the river and looks like a Castle or lighthouse structure. The deeper intake is a submerged intake crib located a few hundred feet upstream. It is not visible from the surface. The intakes withdraw water from approximately 8 -35 feet below water surface (at pool stage).The larger square building 300 feet downstream of GCWW's intake is one of Northern Kentucky Water District's intakes/pump station.</p> <p>During an emergency, GCWW can stop pumping from the river and utilize off-stream storage for 1-3 days. The exact amount of time depends on system demands and whether advance notice has allowed for tanks and reservoirs to be filled.</p> <p>GCWW's analytical capabilities include volatile and semi-volatile organic compounds, some metals, limited microbiological capabilities, and wet chemistry (pH, conductivity, temperature, chlorine residual, etc.). These capabilities are geared toward drinking water analyses, but during an emergency GCWW may be able to provide limited screening-level analyses for water samples.</p>																					
Ohio River Valley Water Sanitation Commission (ORSANCO)	<p>ORSANCO was established in 1948 to control and abate pollution in the Ohio River Basin. ORSANCO is an interstate commission representing eight states and the federal government. Member states include: Illinois, Indiana, Kentucky, New York, Ohio, Pennsylvania, Virginia and West Virginia.</p> <p>ORSANCO operates programs to improve water quality in the Ohio River and its tributaries, including setting waste water discharge standards; performing biological assessments; monitoring for the chemical and physical properties of the waterways; and conducting special surveys and studies.</p> <p>In addition, ORSANCO assists state environmental agencies, U.S. EPA and USCG in emergency spill response and notification. Specifically, ORSANCO's role in the event of a spill is to serve as an interstate communications center, assisting in emergency notification procedures to downstream drinking water utilities, and coordinating emergency stream monitoring in order to track contaminant plumes as they flow downstream.</p> <p>ORSANCO monitors for the following volatile organic compounds:</p> <table><tbody><tr><td>1,1 Dichloroethylene</td><td>1,2 Dichloroethane</td><td>Chlorobenzene</td></tr><tr><td>Methylene Chloride</td><td>Trichloroethylene</td><td>Ethylbenzene</td></tr><tr><td>1,1 Dichloroethane</td><td>1,2 Dichloropropane</td><td>Styrene</td></tr><tr><td>Chloroform</td><td>Dichlorobromomethane</td><td>Bromoform</td></tr><tr><td>1,1 Trichloroethane</td><td>Toluene</td><td>1,3 Dichlorobenzene</td></tr><tr><td>Carbon Tetrachloride</td><td>Tetrachloroethylene</td><td>1,4 Dichlorobenzene</td></tr><tr><td>Benzene</td><td>Dibromochloromethane</td><td>1,2 Dichlorobenzene</td></tr></tbody></table> <p>Monitoring takes place at the drinking water utilities located along the rivers, including: Pittsburgh Water; Pennsylvania American Water at Hays Mine; Westview Water; Weirton Water; Wheeling Water; DuPont Facility at Washington Works; John Amos Power Plant; Huntington Water; Portsmouth Water; Louisville Water; Evansville Water; and Paducah Water.</p>	1,1 Dichloroethylene	1,2 Dichloroethane	Chlorobenzene	Methylene Chloride	Trichloroethylene	Ethylbenzene	1,1 Dichloroethane	1,2 Dichloropropane	Styrene	Chloroform	Dichlorobromomethane	Bromoform	1,1 Trichloroethane	Toluene	1,3 Dichlorobenzene	Carbon Tetrachloride	Tetrachloroethylene	1,4 Dichlorobenzene	Benzene	Dibromochloromethane	1,2 Dichlorobenzene
1,1 Dichloroethylene	1,2 Dichloroethane	Chlorobenzene																				
Methylene Chloride	Trichloroethylene	Ethylbenzene																				
1,1 Dichloroethane	1,2 Dichloropropane	Styrene																				
Chloroform	Dichlorobromomethane	Bromoform																				
1,1 Trichloroethane	Toluene	1,3 Dichlorobenzene																				
Carbon Tetrachloride	Tetrachloroethylene	1,4 Dichlorobenzene																				
Benzene	Dibromochloromethane	1,2 Dichlorobenzene																				
State Agencies	General Roles and Responsibilities																					
Indiana Department of Environmental Management (IDEM)	<p><u>Authority:</u> In 40 CFR 300.115, the National Contingency Plan calls for state participation in RRTs. IDEM is designated as Indiana's RRT Region 5 member. The Indiana Comprehensive Emergency Response Plan identifies IDEM as the lead agency for Emergency Support Function 10 – Hazmat (ESF10).</p> <p><u>Response:</u> Indiana Code 13-14-10-3 authorizes IDEM to order and provide assistance to abate or remedy an emergency, on private or public property, caused by the discharge or impending discharge of any contaminant into or on the air, land, or waters of Indiana that poses an imminent and substantial danger to public health or the environment.</p> <p>The Indiana Spill Rule 327 IAC 2-6.1 describes immediate spill reporting, containment, and response actions required of responsible parties.</p> <p><u>Personnel:</u> On-Scene Coordinators (OSC) in IDEM's Emergency Response program operate a 24-hour spill reporting line for Indiana; provide technical assistance to local responders and responsible parties; and respond to locations 24 hours a day for spills of petroleum, hazardous substances, extremely hazardous substances, and objectionable substances that are of a quantity, type, duration, and in a location as to damage the waters of Indiana.</p>																					

Ohio Environmental Protection Agency (Ohio EPA)	<p><u>Authority:</u> For the state of Ohio, the legal requirements for responding to a discharge or release within the State of Ohio are set forth in The Ohio Administrative Code Title 37, Chapter 3745.</p> <p><u>Response:</u> Ohio EPA is the designated representative of RRT 5 for Ohio. Ohio EPA is also the State agency charged with investigating releases of oil and hazardous substances from both fixed and mobile facilities. Ohio's spill response program is housed in the Emergency Response Unit (ERU), which is a part of the Division of Environmental Response and Revitalization. This unit, which is responsible for receiving reports of releases to all environmental media, uses 15 spill responders to aid in chemical identification, containment, cleanup, public safety, and the identification of RPs. If a RP cannot be identified or is recalcitrant, the ERU can activate a level-of-effort contractor to initiate actions to contain or clean up a spill.</p> <p><u>Personnel:</u> OSCs in Ohio EPA's ERU operate a 24-hour spill reporting line for Ohio; provide technical assistance to local responders and responsible parties; and respond to locations 24-hours a day for spills of petroleum, hazardous substances, extremely hazardous substances, and objectionable substances that are of a quantity, type, duration, and in a location as to damage the waters of Ohio.</p>
State Agencies	General Roles and Responsibilities
Kentucky Department of Environmental Protection (KDEP)	<p><u>Authority:</u> In 40 CFR 300.115, the National Contingency Plan calls for state participation in RRTs. KDEP is designated as Kentucky's RRT Region 4 member.</p> <p><u>Response:</u> The Kentucky Emergency Operations Plan (EOP) identifies KDEP as the lead agency for Emergency Support Function 10 – Oil and Hazardous Materials (ESF10).</p> <p>Kentucky Revised Statutes (KRS 224-01-400), provides the following language:</p> <ul style="list-style-type: none"> Reportable quantities and release notification requirements for hazardous substances, pollutants, or contaminants. Any person in charge of a vessel or site from which oil is discharged in a harmful quantity as defined by 40 C.F.R. Part 110 in contravention of Section 311 of the Federal Clean Water Act shall immediately notify the cabinet's twenty-four (24) hour environmental response line. The cabinet shall be the lead agency for hazardous substance, pollutant, or contaminant emergency spill response and, after consultation with other affected federal, state, and local agencies and private organizations, shall establish a contingency plan for undertaking emergency actions in response to the release of a hazardous substance, pollutant, or contaminant. <p><u>Personnel:</u> OSCs in KDEP's Environmental Response Branch maintain a 24-hour spill reporting line for Kentucky; provide technical assistance to local responders and responsible parties; and respond to locations 24-hours a day for spills of petroleum, hazardous substances, extremely hazardous substances, and objectionable substances that are of a quantity, type, duration, and in a location as to damage the waters of Kentucky.</p> <p>KDEP is also designated the State Trustee by the Secretary of the Energy and Environment Cabinet where the KDEP is housed.</p>
Indiana Department of Natural Resources (IN DNR)	<p>The IN DNR Land Management Team supports the Department's programs designed to protect Indiana's natural and recreational resources. Conservation Police Officers (CPO) or Game Wardens are vested with full state-wide police authority and are trained as law enforcement professionals. Although CPOs have full police authority in the enforcement of all Indiana Compiled Statutes, their enforcement mission is to focus upon those laws and activities associated with natural resource protection and recreational safety.</p> <p>As a natural resource trustee, the IN DNR works with U.S. Fish & Wildlife Service (USFWS) and other co-trustees to assess damages to restore natural resources (as circumstances allow) lost or injured due to a spill. Data acquired would be used to determine the extent of damage to natural resources, to develop restoration or replacement strategies, and to develop and submit a claim for damages to the RP to implement the most appropriate restoration actions.</p>
Ohio Department of Natural Resources (ODNR)	<p>The ODNR acts to protect Ohio's natural and recreational resources. ODNR Officers (Conservation Police Officers [CPO]) and ODNR employees are tasked in assessing damages, restoration of natural resources, and law enforcement duties due to a spill. Data acquired would be used to determine the extent of damage to natural resources, to develop restoration or replacement strategies, and to develop and submit a claim for damages to the Responsible Party to implement the most appropriate restoration actions.</p>

Kentucky Department of Fish and Wildlife (KDF&W)	<p>The KDF&W is responsible for protecting Kentucky's natural and recreational resources. Conservation Officers (CO) or Game Wardens are vested with full state-wide police authority and are trained as law enforcement professionals. Although COs have full police authority in the enforcement of all Kentucky Compiled Statutes, their enforcement mission is to focus upon those laws and activities associated with natural resource protection, fish and wildlife resources, and recreational boating safety.</p>
State Historic Preservation Officer (SHPO)	<p>Identification of culturally sensitive sites in the vicinity of a spill can be accomplished by contacting the appropriate State Historic Preservation Officer (SHPO). This individual is generally associated with the State Historical Preservation Office or Society, which may or may not be within a department of State government.</p> <p>The National Parks Service (NPS) has responsibility for sites located on Federal lands within the Region. NPS maintains a registry of historically and culturally significant resources, the National Register of Historic Places, which can be accessed via the National Register Information System at http://www.nps.gov/nr/research/.</p> <p>Specific procedures and Federal OSC responsibilities regarding these sites are set forth in the Programmatic Agreement on Protection of Historic Properties During Emergency Response. Further information about the NPS History and Culture program can be found at http://www.nps.gov/history/.</p>
Federal Agencies	General Roles and Responsibilities
U.S. Environmental Protection Agency (U.S. EPA) Region 5	<p>The Federal On-Scene Coordinator (FOSC) is the pre-designated federal official, operating at the scene of an oil or hazardous substance incident in accordance with executive powers delegated through law, regulation, executive orders and agency delegations. The National Oil and Hazardous Substances Pollution Contingency Plan (NCP) provides the legal authority which clearly specifies that the role and responsibility of the FOSC is to direct response operations and to coordinate all other efforts at the scene of an oil discharge or a hazardous substance release.</p> <p>For spills and releases originating from the Right Descending Bank (RDB) of the Ohio River in Ohio and Indiana, U.S. EPA Region 5 will provide the FOSC.</p> <p>U.S. EPA Region 5 will provide the FOSC when an incident is federalized for spills originating from a source other than a vessel or marine transportation facility where:</p> <ul style="list-style-type: none"> • The FOSC is the lead federal official for spill response. • The FOSC is the point of contact for the coordination of federal efforts with those of the local response community. The FOSC will be in support of local command unless asked to assume control. • The FOSC shall, to the extent practicable, collect pertinent facts about the discharge or release, such as its source and cause; the identification of potentially responsible parties; the nature, amount, and location of discharged or released materials; the probable direction and time of travel of discharged or released materials; whether the discharge is a worst case discharge; the pathways to human and environmental exposure; the potential impact on human health, welfare, and safety and the environment; whether the discharge or release poses a substantial threat to the public health or welfare; the potential impact on natural resources and property which may be affected; priorities for protecting human health and welfare and the environment; and appropriate cost documentation. <p>The FOSC shall ensure that the Natural Resource Trustees are promptly notified of discharges or releases and shall coordinate all response actions with the trustees. The FOSC should ensure that all appropriate public and private interests are kept informed and that their concerns are considered throughout a response, to the extent practicable. The U.S. EPA Region 5 FOSC for the Ohio River – Cincinnati Sub-Area Spill Response Plan is Steve Renninger.</p>

U.S. EPA Region 4	<p>The On-Scene Coordinator is the federal official predesignated by U.S. EPA or the USCG to coordinate and direct responses under the National Contingency Plan. For spills and releases originating from the left descending bank (LDB) and the main stem of the Ohio River in Kentucky, U.S. EPA Region 4 will provide the FOSC.</p> <p>U.S. EPA Region 4 has jurisdiction if the spill originates on the Ohio River or originates from the Kentucky Bank of the Ohio River.</p> <p>U.S. EPA Region 4 provides FOSCs when an incident is federalized for spills originating from a source other than a vessel or marine transportation facility where:</p> <ul style="list-style-type: none"> • The FOSC is the lead federal official for spill response. • The FOSC is the point of contact for the coordination of federal efforts with those of the local response community. The FOSC will be in support of local command unless asked to assume control. • The FOSC shall, to the extent practicable, collect pertinent facts about the discharge or release, such as its source and cause; the identification of potentially responsible parties; the nature, amount, and location of discharged or released materials; the probable direction and time of travel of discharged or released materials; whether the discharge is a worst case discharge; the pathways to human and environmental exposure; the potential impact on human health, welfare, and safety and the environment; whether the discharge or release poses a substantial threat to the public health or welfare; the potential impact on natural resources and property which may be affected; priorities for protecting human health and welfare and the environment; and appropriate cost documentation. <p>The FOSC shall ensure that the Natural Resource Trustees are promptly notified of discharges or releases and shall coordinate all response actions with the trustees. The FOSC should ensure that all appropriate public and private interests are kept informed and that their concerns are considered throughout a response, to the extent practicable.</p>
National Response Center (NRC)	<p>The NRC is the national communications center for handling activities related to response actions. The NRC acts as the single point of contact for all Federal pollution incident reporting. Notice of an oil discharge or release of a hazardous substance in an amount equal to or greater than the reportable quantity must be made immediately in accordance with 40 CFR Part 110 and 40 CFR Part 116, respectively. All notices of discharges or releases received at the NRC will be relayed immediately by telephone to the appropriate pre-designated federal OSC.</p> <p>To address the complex nature of communications among and within the U.S. EPA Regions that have authority along the Ohio River, ICS Form 205 (Communication Plan) contains detailed communications for each state within Regions 4 and 5 that border the Ohio River. Every effort has been made to ensure that all Federal, state and local response contacts have been identified and recorded for the Ohio River.</p>
Federal Agencies	General Roles and Responsibilities
USCG Sector Ohio Valley – Louisville MSD Cincinnati	<p>The On-Scene Coordinator is the federal official predesignated by U.S. EPA or the USCG to coordinate and direct responses under the National Contingency Plan.</p> <p>The USCG provides Federal On-Scene Coordinators (FOSC) for oil discharges, when an incident is federalized and the source is either a commercial vessel; a commercial vessel transfer operation; or it is within or originating from the USCG regulated portion of a facility; where:</p> <ul style="list-style-type: none"> • The Incident must result in an actual discharge or threatened discharge of oil or hazardous substances into or on navigable waters of the United States, or the riverbank within the USCG Eighth District. • The FOSC is the lead federal official for spill response. • The FOSC is the point of contact for the coordination of federal efforts with those of the local response community and shall be a fully involved member of the unified command. • The FOSC shall, to the extent practicable, collect pertinent facts about the discharge or release, such as its source and cause; the identification of potentially responsible parties; the nature, amount, and location of discharged or released materials; the probable direction and time of travel of discharged or released materials; whether the discharge is a worst case discharge; the pathways to human and environmental exposure; the potential impact on human health, welfare, and safety and the environment; whether the discharge or release poses a substantial threat to the public health or welfare; the potential impact on natural resources and property which may be affected; priorities for protecting human health and welfare and the environment; and appropriate cost documentation. <p>The FOSC shall ensure that the natural resource trustees that may be impacted are promptly notified of discharges or releases. The FOSC should ensure that all appropriate public and private interests are kept informed and that their concerns are considered throughout a response, to the extent practicable.</p> <p>The USCG Eighth District has designated Sector Ohio Valley, based out of Louisville, Kentucky, as their FOSC. In addition to providing the FOSC for spills and releases originating from marine-transportation-related facilities and vessels, Sector Ohio Valley can support efforts through its Cincinnati Marine Safety Detachment.</p>

<p>U.S. Army Corps of Engineers (USACE)</p>	<p>The Ohio River is a major transportation route for commerce in the U.S. and contains an extensive system of 21 locks and dams to speed this transportation from the Mississippi River up to Pittsburgh, Pennsylvania.</p> <p>The Meldahl and the Markland Dams are located in the response area covered by the plan.</p> <p>This lock and dam system is controlled by the USACE. During any pollution incident, control of river traffic during a crisis situation will be accomplished via two methods:</p> <ul style="list-style-type: none"> • Voluntary actions of industry and/or the establishment of mandatory controls by the USCG • During a severe flood, low water, or pollution event, a state of de facto river closure may arise through the closure of the locks and dams by the USACE or the inability of vessels to operate due to low channel depths. <p>Extensive cooperation between USCG, USACE, State and local agencies, and the river industry is necessary for incidents occurring on the Ohio River. Each USACE District on the Ohio River contains a Readiness Branch and within it an Operations Division. The function of the branch is to identify emergency situations that may warrant USACE assistance, maintain liaison with the states and with other federal agencies, and manage information and deployment of emergency resources as provided for by public laws.</p>
<p>United States Fish & Wildlife Service (USFWS)</p>	<p>The USFWS is also a trustee bureau of the U.S. Department of the Interior with Natural Resource Damage Assessment & Restoration (NRDAR) authorities and responsibilities to restore or replace natural resources injured or lost due to spills of oil or releases of hazardous substances. The USFWS fulfills these responsibilities working with co-trustees (e.g., IN DNR, ODNR) and Responsible Parties as a distinct process coordinated with the emergency response process.</p>

**UTILIZE ICS-234 (RESPONSE
CHECKLIST) DURING THE
INITIAL RESPONSE /
1st OPERATIONAL PERIOD
(FIRST 24-HOURS)**

Incident name: _____	ICS – 234 INITIAL RESPONSE CHECKLIST OHIO RIVER - CINCINNATI SUB-AREA SPILL RESPONSE PLAN
--------------------------------	--

UNIFIED COMMAND	OPERATION SECTION
Recommended Strategies, Tactics or Tasks <u>UNIFIED COMMAND:</u> <input type="checkbox"/> Establish Unified Command. Member should include U.S. EPA, USCG, RP, state and local responders. <input type="checkbox"/> Establish incident objectives and priorities. <input type="checkbox"/> Establish a response organization. <input type="checkbox"/> Determine Responsible Parties (RP). <u>SAFETY:</u> <input type="checkbox"/> Develop a Health and Safety Plan <input type="checkbox"/> Prevent or stop unsafe work conditions. <input type="checkbox"/> Identify hazardous conditions associated with the incident. <input type="checkbox"/> Develop a safety message <u>PUBLIC AFFAIRS:</u> <input type="checkbox"/> Gather incident data and information for media briefings. <input type="checkbox"/> Conduct media briefings. <input type="checkbox"/> Coordinating with County and State emergency managers and local Sheriff, provide emergency communications to impacted public. <u>LIAISON:</u> <input type="checkbox"/> Establish interagency contacts. <input type="checkbox"/> Ensure response agencies are supporting the incident. <input type="checkbox"/> Ensure notifications to NRC, downstream states, municipalities, drinking water intakes, and economically sensitive businesses (ORSANCO)	Recommended Strategies, Tactics or Tasks <u>OPERATIONS:</u> <input type="checkbox"/> Contain and stabilize spill sources. <input type="checkbox"/> Establish perimeter and hot zone. <input type="checkbox"/> Develop work assignments. <input type="checkbox"/> Develop a spill recovery plan. <input type="checkbox"/> Open up the Oil Spill Liability Trust Fund (OSLTF) for a Pollution Removal Fund Authorization (PRFA). <input type="checkbox"/> Mobilize company responders, local spill CO-OP, first responders, county emergency government and hazmat teams, state and federal responders and their contractors. <input type="checkbox"/> Hire a response contractor(s) if RP not adequately responding. <input type="checkbox"/> Respond to oiled wildlife. Seek assistance from US Fish and Wildlife Service. <input type="checkbox"/> See Mill Creek Response Plan Appendix, if applicable <input type="checkbox"/> Use of chemical agents in the Ohio River is not pre-approved. <input type="checkbox"/> Sinking agents shall not be used. <u>RIVER OPERATIONS:</u> <input type="checkbox"/> Establish river traffic control, river-traffic evacuation, no-boating area <input type="checkbox"/> Determine if it is safe for response personnel to be in boats on Ohio River <input type="checkbox"/> Establish shore land perimeter control areas <input type="checkbox"/> Notify and evacuate, if necessary, house boats and boat house owners and occupants
PLANNING SECTION	LOGISTICS SECTION
Recommended Strategies, Tactics or Tasks <u>PLANNING:</u> <input type="checkbox"/> Establish planning cycle. <input type="checkbox"/> Collect, process, and display situation information about the incident. <input type="checkbox"/> Conduct spill modeling and spill trajectories. <input type="checkbox"/> Develop a monitoring plan for water quality. <input type="checkbox"/> Identify sensitive resources. See Inland Sensitivity Maps. <input type="checkbox"/> Conduct spill trajectory and time of travel to predict downstream impacts. <input type="checkbox"/> Establish data management plan. <input type="checkbox"/> Identify spill response resources for next Operational Period.	Recommended Strategies, Tactics or Tasks <u>LOGISTICS/COMMUNICATIONS:</u> <input type="checkbox"/> Establish an Incident Command Post for briefings. <input type="checkbox"/> Establish communications protocol for the incident. <input type="checkbox"/> Acquire additional communication resources if needed. <u>LOGISTICS/PROCUREMENT:</u> <input type="checkbox"/> Ensure procurement of materials and supplies. <input type="checkbox"/> Obtain authorization to initiate and finalize purchases <input type="checkbox"/> Interpret and initiate contracts/agreements. <input type="checkbox"/> Maintain log of all purchases related to the incident.

**UTILIZE INITIAL IAP FOR
OPERATIONAL PERIOD #2.**

**DEVELOPMENT OF RESPONSE IAP
SHOULD BE INITIATED PRIOR TO
THE 2nd OPERATIONAL PERIOD.**

Incident Name _____	2. Operational Period to be covered by IAP (Date/Time) From: _____ To: _____	ICS – 200 IAP COVER SHEET OHIO RIVER - CINCINNATI SUB-AREA SPILL RESPONSE PLAN
------------------------	---	---

INITIAL INCIDENT ACTION PLAN

The items below are included in this Incident Action Plan

- [ICS 202](#) Incident Objectives. (Select from list as appropriate; add more if needed)
- [ICS 207](#) Incident Organization Chart.
- [ICS 204](#) Assignment List. (Fill in operations personnel contact name, incident-specific assignments & resource summary)
- [ICS 205](#) Incident Communication Plan. (Phone/Radio Contact list)
- [ICS 206](#) Medical Plan. (Medical aid stations, hospitals and emergency procedures)
- [ICS 223](#) Health and Safety Message. (General Safety Message and Major Hazards/ Risks)
- [ICS 214](#) Unit Activity Log. (Details of unit activity, including team activity or individual activity)

Other Attachments

The following attachments are not included in the IAP. Please check and include additional forms, as needed.

- ☐ [ICS 208 Site Safety and Control Plan\(s\)**](#) **note: unless otherwise specified, every organization shall respond in accordance with the safety policies and procedures of their respective organizations
- ☐ [ICS 225 Maps / Charts](#) (See USACE Navigational Charts and Mill Creek Response Plan Maps. Select and add maps, as necessary)
- ☐ [Weather Forecasts / River flow – currents – conditions](#)
- ☐ _____
- ☐ _____

General Incident Summary

Incident Information and Incident Status

(Include Incident location, latitude/longitude, estimated quantity spilled, spill rate etc.)

Prepared By: (Name/Title) _____	Date/Time: _____
Approved by: (Name/Title) _____	Date/Time: _____

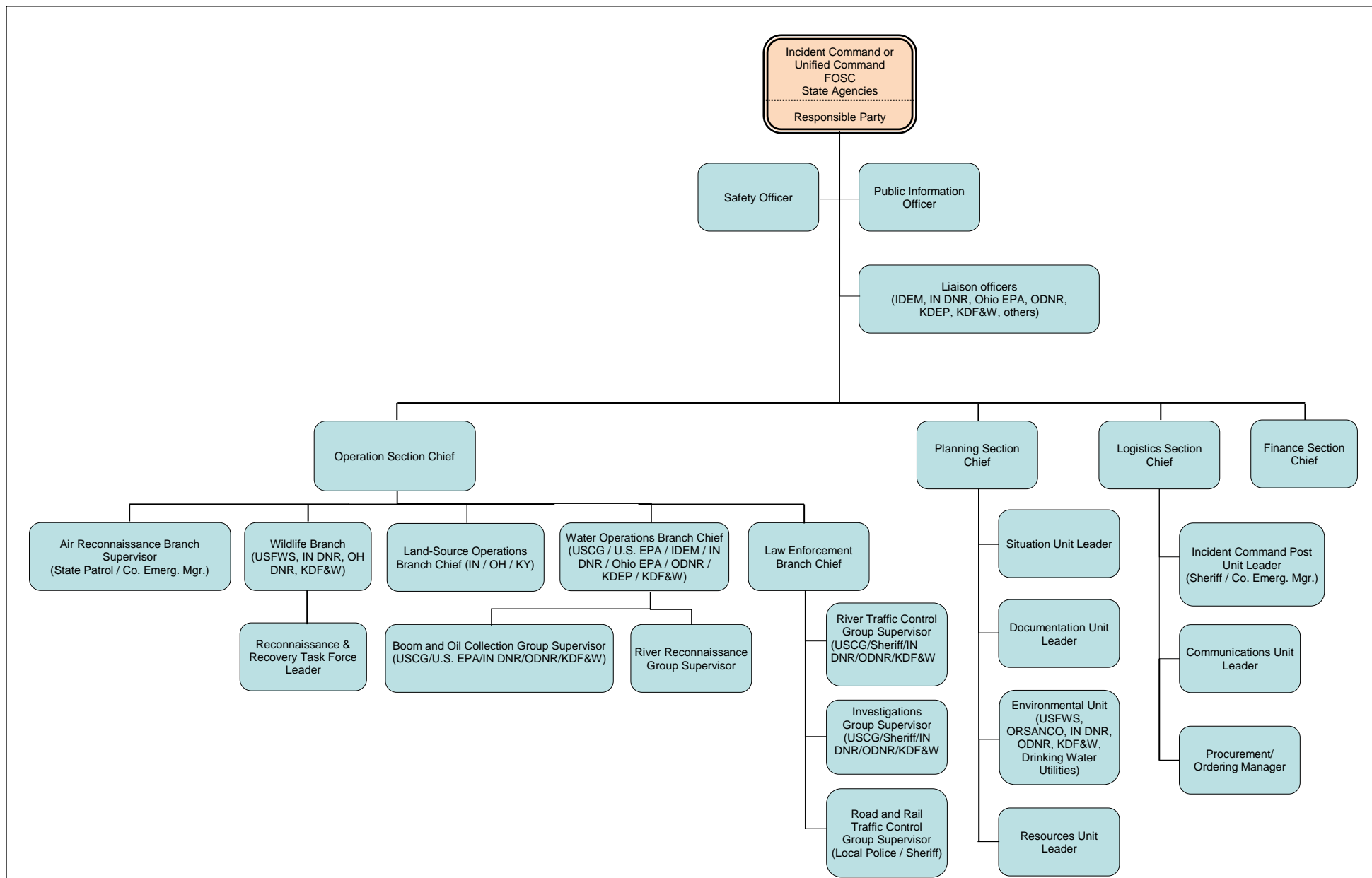
Incident name: _____	ICS – 202 INCIDENT OBJECTIVES OHIO RIVER - CINCINNATI SUB-AREA SPILL RESPONSE PLAN
-----------------------------	---

Objectives
1. Conduct all the appropriate notifications (local fire department, National Response Center, IDEM, Ohio EPA or KDEP), including notifications to downstream communities (via ORSANCO).
2. Conduct response operations to control/stop the source of the spill, contain, recover released material in the Ohio River and downstream and minimize response related environmental impacts.
3. Establish Unified Command and establish an Incident Command Post (via. County Emergency Management).
4. Ensure the health and safety of the public and response personnel.
5. Provide and manage necessary communications.
6. Identify the Responsible Party and determine ability to respond to the spill.
7. Inform and update the community and public.
8. Secure the incident scene, restrict river traffic as necessary and secure all evidence.
9. Evaluate resources-at-risk and protect downstream sensitive resources and minimize response related environmental impacts.
10. Coordinate recovery actions and appropriate rehabilitation procedures with natural resource trustees.
11. Coordinate response actions and resource information with natural resource trustees and the Natural Resource Damage Assessment & Restoration (NRDAR) process.
12. Coordinate operations to evaluate impact to the Ohio River (and its tributaries), and potentially impacted residents, water intakes and resources downstream.
13.
14.
15.
16.

Incident name:

ICS – 207 INCIDENT ORGANIZATION CHART OHIO RIVER - CINCINNATI SUB-AREA SPILL RESPONSE PLAN

Initial Command Structure for the first operational period of an oil spill. [Click here to have a workable and printable version of the Organization Chart](#)



9. Operations Personnel				
Title	Name	Affiliation	Emergency Contact #	Contact # (s)
_____	_____	_____	_____	_____
_____	_____	_____	_____	_____
_____	_____	_____	_____	_____
_____	_____	_____	_____	_____
_____	_____	_____	_____	_____

Communications: Refer to the [Ohio River – Cincinnati Sub-Area Spill Response Plan Emergency Contact List](#) provided in this Incident Action Plan

10. Resource Summary						
ID	Resource Type	Description/ Location	Quantity	Size	Status	Notes/ Comments
_____	_____	_____	_____	_____	_____	_____
_____	_____	_____	_____	_____	_____	_____
_____	_____	_____	_____	_____	_____	_____
_____	_____	_____	_____	_____	_____	_____
_____	_____	_____	_____	_____	_____	_____

11. Additional Information	

Prepared By: (Name/Title) _____	Date/Time: _____
Approved by: (Name/Title) _____	Date/Time: _____

1. Incident name: _____	2. Operational Period # 2		ICS – 204 ASSIGNMENT LIST OHIO RIVER - CINCINNATI SUB-AREA SPILL RESPONSE PLAN
	3. Section	Operations	
	4. Division/Group	Oil Containment and Recovery	

5. Agencies Involved in Contain Release Group

Agencies that might play a role in Containment Group:

- Responsible Party/Facility/Industry/Contractors
- Counties & Emergency Management
- Local Fire, Police, Sheriff & Hazmat Teams
- Greater Cincinnati Hazardous Materials Unit, Inc. (GCHMU)
- Greater Cincinnati Hazardous Material Control Committee (GCHMCC – Spill Co-Op)
- Indiana Department of Environmental Management (IDEM)
- Indiana Department of Natural Resources (IN DNR)
- Ohio Environmental Protection Agency (Ohio EPA)
- Ohio Department of Natural Resources (ODNR)
- Kentucky Department of Environmental Protection (KDEP)
- U.S. Environmental Protection Agency (U.S. EPA) Region 5/Region 4
- U.S. Coast Guard (USCG)
- U.S. Army Corps of Engineers (USACE)

Agency General Roles and Responsibilities: Refer to the [Roles and Responsibilities](#) Table provided in this Incident Action Plan

6. Recommended Strategies and Tactics

- Mobilize company responders, local spill Co-Op, first responders, county emergency government and hazmat teams, state and federal responders and their contractors
- Utilize company and locally stored equipment such as oil spill boom, sorbents, tanker trucks, vacuum units, oil collection equipment or pre-staged response equipment
- Activate Spill Response Contractors (if company response too slow or inadequate)
- Activate and implement oil boom collection and recovery plan
- Contain and stabilize oil-sources
- Establish ignition source controls in hot zone
- Deflect spilled material into Lock Chamber for collection. Utilize Lock and Dam Master and provide formal request from Federal OSC
- **Use of chemical agents is not pre-approved by U.S. EPA. Sinking agents shall not be used in U.S. EPA Regions 4 and 5.**
- **U.S. EPA does not promote the use of dispersants or other oil emulsifiers as they do not work in fresh water. Consult U.S. EPA Regional Response Team.**
- **Authorization of in-situ burning is subject to consultation and concurrence from the State and DOI. Consult U.S. EPA Regional Response Team (See Attachment 6). Considerations for use should include an analysis of oil location and the potential impact of smoke on downwind populations.**
- **State OSC has authorization to allow emergency decanting of oil.**

7. Incident-Specific Assignments

-
- Consult U.S. EPA Region 4 or 5 RCP for shoreline cleanup guideline matrices.

8. Special Instructions for Division/Group**9. Operations Personnel**

Title	Name	Affiliation	Emergency Contact #	Contact # (s)
_____	_____	_____	_____	_____
_____	_____	_____	_____	_____
_____	_____	_____	_____	_____
_____	_____	_____	_____	_____
_____	_____	_____	_____	_____

Communications: Refer to the [Ohio River – Cincinnati Sub-Area Spill Response Plan Emergency Contact List](#) provided in this Incident Action Plan

10. Resource Summary

ID	Resource Type	Description/ Location	Quantity	Size	Status	Notes/ Comments
_____	_____	_____	_____	_____	_____	_____
_____	_____	_____	_____	_____	_____	_____
_____	_____	_____	_____	_____	_____	_____
_____	_____	_____	_____	_____	_____	_____
_____	_____	_____	_____	_____	_____	_____

11. Additional Information

Prepared By:
(Name/Title)

Date/Time:

Approved by:
(Name/Title)

Date/Time:

1. Incident name:	2. Operational Period # 2		ICS – 204 ASSIGNMENT LIST OHIO RIVER - CINCINNATI SUB-AREA SPILL RESPONSE PLAN
_____	3. Section	Operations	
	4. Division/Group	Wildlife Recovery & Rehabilitation	

5. Agencies Involved in Wildlife Recover & Rehabilitation Group
<p>Agencies that might play a role in Wildlife Recovery and Rehabilitation Group:</p> <ul style="list-style-type: none"> Responsible Party/Facility/Industry/Contractors Indiana Department of Environmental Management (IDEM) Indiana Department of Natural Resources (IN DNR) Ohio Environmental Protection Agency (Ohio EPA) Ohio Department of Natural Resources (ODNR) Kentucky Department of Environmental Protection (KDEP) Kentucky Fish & Wildlife U.S. Fish and Wildlife Service (USFWS)
<p>Agency General Roles and Responsibilities: Refer to the Roles and Responsibilities Table provided in this Incident Action Plan</p>
6. Recommended Strategies and Tactics
<ul style="list-style-type: none"> Establish Operations Section Wildlife Branch to respond to oiled wildlife USFWS and/or state resource managers will oversee wildlife rehabilitation (RP Contractor) USFWS and/or state resource managers will salvage dead wildlife USFWS and/or state resource managers will report location of oil, high wildlife use areas, and protection needs for sensitive natural resources.
7. Incident-Specific Assignments

8. Special Instructions for Division/Group**9. Operations Personnel**

Title	Name	Affiliation	Emergency Contact #	Contact # (s)
_____	_____	_____	_____	_____
_____	_____	_____	_____	_____
_____	_____	_____	_____	_____
_____	_____	_____	_____	_____
_____	_____	_____	_____	_____

Communications: Refer to the [Ohio River – Cincinnati Sub-Area Spill Response Plan Emergency Contact List](#) provided in this Incident Action Plan

10. Resource Summary

ID	Resource Type	Description/ Location	Quantity	Size	Status	Notes/ Comments
_____	_____	_____	_____	_____	_____	_____
_____	_____	_____	_____	_____	_____	_____
_____	_____	_____	_____	_____	_____	_____
_____	_____	_____	_____	_____	_____	_____
_____	_____	_____	_____	_____	_____	_____

11. Additional Information

Prepared By:
(Name/Title)

Date/Time:

Approved by: (Name/Title) _____		Date/Time: _____
--	--	-------------------------

1. Incident name: _____	2. Operational Period # 2 <table border="1" style="width: 100%; border-collapse: collapse;"> <tr> <td style="width: 30%; padding: 5px; vertical-align: top;"> 3. Section </td> <td style="padding: 5px; vertical-align: top;"> Operations </td> </tr> <tr> <td style="padding: 5px; vertical-align: top;"> 4. Division/Group </td> <td style="padding: 5px; vertical-align: top;"> Reconnaissance & Monitoring </td> </tr> </table>	3. Section	Operations	4. Division/Group	Reconnaissance & Monitoring	ICS – 204 ASSIGNMENT LIST OHIO RIVER - CINCINNATI SUB-AREA SPILL RESPONSE PLAN
3. Section	Operations					
4. Division/Group	Reconnaissance & Monitoring					

5. Agencies Involved in Reconnaissance & Monitoring Group
<p>Agencies that might play a role in Reconnaissance and Monitoring Group:</p> <ul style="list-style-type: none"> Responsible Party/Facility/Industry/Contractors Indiana Department of Environmental Management (IDEM) Indiana Department of Natural Resources (IN DNR) Ohio Environmental Protection Agency (Ohio EPA) Ohio Department of Natural Resources (ODNR) Kentucky Department of Environmental Protection (KDEP) Kentucky Fish & Wildlife U.S. Environmental Protection Agency (U.S. EPA) Region 5/Region 4 U.S. Coast Guard (USCG) ORSANCO
Agency General Roles and Responsibilities: Refer to the Roles and Responsibilities Table provided in this Incident Action Plan
6. Recommended Strategies and Tactics
<ul style="list-style-type: none"> Establish & Deploy Reconnaissance Team(s) – ORSANCO has stated that there may be approximately 30 boats between the Markland and Meldahl Dams which may be available to provide recon support Joint reconnaissance with local authorities Air- flight reconnaissance and reporting Consider variety of resources for reconnaissance such as local, state, federal or private air recon, NOAA, or private resources to provide spill's trajectory Wildlife Reconnaissance and Recovery Teams provide real time field situational updates on the location of oil and related environmental impacts to the Planning Section Environmental Unit to help direct Shoreline Cleanup Assessment Technique (SCAT) Conduct air monitoring and water sampling. Conduct perimeter air sampling, water sampling at scene and down river Conduct monitoring with the Planning Section's Environmental Unit and the NRDAR Liaison. Use Indiana, Ohio or Kentucky Inland Sensitivity Maps Identify culturally sensitive sites in the vicinity of a spill; can be accomplished by contacting the appropriate State Historic Preservation Officer (SHPO).
7. Incident-Specific Assignments

8. Special Instructions for Division/Group**9. Operations Personnel**

Title	Name	Affiliation	Emergency Contact #	Contact # (s)
_____	_____	_____	_____	_____
_____	_____	_____	_____	_____
_____	_____	_____	_____	_____
_____	_____	_____	_____	_____
_____	_____	_____	_____	_____

Communications: Refer to the [Ohio River – Cincinnati Sub-Area Spill Response Plan Emergency Contact List](#) provided in this Incident Action Plan

10. Resource Summary

ID	Resource Type	Description/ Location	Quantity	Size	Status	Notes/ Comments
_____	_____	_____	_____	_____	_____	_____
_____	_____	_____	_____	_____	_____	_____
_____	_____	_____	_____	_____	_____	_____
_____	_____	_____	_____	_____	_____	_____
_____	_____	_____	_____	_____	_____	_____

11. Additional Information

Prepared By:
(Name/Title) _____

Date/Time: _____

Approved by:
(Name/Title) _____

Date/Time: _____

Incident name:	Operational Period # 2			ICS – 205 INCIDENT COMMUNICATION PLAN OHIO RIVER - CINCINNATI SUB-AREA SPILL RESPONSE PLAN
	From		To	

Position	Name	Phone	e-mail	Current Location	Radio Frequency
Incident Commander and Staff					
Incident Commander(s)					
Safety Officer					
Information Officer					
Liaison Officer					
Water Operations Section Chief					
Land-Source Section Chief					
Wildlife Branch Section Chief					
Logistics Section Chief					
Planning Section Chief					
Law Enforcement Section Chief					
Prepared By: (Name/Title)	_____		Date/Time:		_____
Approved By: (Name/Title)	_____		Date/Time:		_____

OHIO RIVER - CINCINNATI SUB-AREA SPILL RESPONSE PLAN EMERGENCY CONTACT LIST

ORGANIZATION	NAME	EMERGENCY #	OFFICE #	E-Mail	Other(Radio)
Local					
911					
Dearborn County EMA and LEPC	William Black, Jr., Director		812.537.3971	dc_ema@lvarc.net	
Ohio County EMA	Joe Teke, Director		812.438.2883	jteke@ohioco911.com	
Ohio County LEPC	G. Tom Work, Chair	812.438.3636	812.438.3636	ronrichard@embarqmail.com	
Switzerland County EMA	George Adams, Director		812.427.3346	switzcoema@embarqmail.com	
Switzerland County LEPC	Christopher See, Chair	812.427.3636	812.427.9015	see.christopher@yahoo.com	
Hamilton County EMA	Nick Crossley, Director		513.263.8200	nick.crossley@hamilton-co.org	
Hamilton County LEPC	Nicholas Crossley, Emergency Coordinator Doug Witsken, LEPC Coordinator	513.825.2260 513.312.3242	513.263.8206	Nicholas.crossley@hamilton-co.org Doug.Witsken@hamilton-co.org	
Clermont County EMA/LEPC	Pam Haverkos, Director		513.732.7661 513.735.8502	Clermontema@clermontcountyohio.gov phaverkos@clermontcountyohio.gov	
Brown County EMA and LEPC	Tom Peterson, Director		937.378.5100	browncountyLEPC@gmail.com	
Adams County EMA and LEPC	Karen Howelett, Director	937.544.2314	937.544.6123	adamsema1@yahoo.com	
Gallatin County EMA	Barry Alexander, Director		859.567.2452	delmar850@insightbb.com	
Boone County EMA	Mark Ihrig, Director		859.334.2279	mihrig@boonecountyky.org	
Kenton County EMA	Steve Hensley, Director		859.392.1480	steve.hensley@kentoncounty.org	
Campbell County EMA	William Turner, Director		859.635.1111	eoc@campbellcountyky.org	
Pendleton County EMA	Mike Morre, Director		859.654.1930	pcdes@fuse.net	
Bracken County EMA	F. Neider Reynolds, Director		606.735.2570	bces41004@yahoo.com	
Mason County EMA	Jack Fultz, Director		606.564.2570	mcem@maysvilleky.net	
Greater Cincinnati Water Works (GCWW)	24hr staffed control room	513.624.5812			
	24hr staffed shift chemist	513.368.1309			
	Shift Supervisor	513.378.0760			
	Bruce Whitteberry, Water Quality & Treatment	513.378.0679			
ORSANCO	Sam Dinkins	513.231.7719	513.509.2972	sdinkins@orsanco.org	
Greater Cincinnati Hazardous Materials Unit (GCHMU)	Brooke Matzen, Office Administrator		513.779.1200	Link to website: http://www.gchmu.com/home	
Hamilton County Communications Center	To access the GCHMU	513.825.2280			
Private					
Greater Cincinnati Hazardous Material Control Committee (GCHMCC – Spill Co-op)	Mike Doll		513.557.4212 513.616.4915 cell	Link to website: http://gchmcc.org/ mdoll@petercremerna.com	
Wildlife Rehabilitation Contractors	Focus Wildlife	800.578.3048		Link to website: http://www.focuswildlife.net/	
State					
IDEM	IDEM Emergency Response Hotline	888.233.7745			
Ohio EPA	Ohio EPA Emergency Response Hotline	800.282.9378			
KDEP	KDEP Emergency Response Hotline	800.928.2380			
Ohio EPA Manger	Southwest District Office – Dayton, OH Jodi Billman-Kotsko	614.230.7311	937.285.6357 614.836.8761	Jodi.billman-kotsko@epa.ohio.gov	

Ohio EPA OSCs	Amanda Browne Toni Carmichael Bill Lohner Keith Wise	937.203.7184 614.867.1055 937.723.0952 937.478.9177	937.285.6599 937.285.6090 937.285.6051 937.285.6037	Amanda.browne@epa.ohio.gov Toni.carmichael@epa.ohio.gov bill.lohner@epa.ohio.gov Keith.wise@epa.ohio.gov	
IN DNR – Executive Office	Robert Carter, Director		317.232.4020		
IN DNR - Division of Fish & Wildlife	Mark Reiter, Director Division of Fish & Wildlife		317.232.4080		
Ohio Department of Natural Resources (ODNR)	ODNR Communications Center		614.799-9538	odnrcomm@dnr.state.oh.us	
Kentucky Division of Fish & Wildlife	Fish & Wildlife Communications Center	800.252.5378	800.252.5378		
IN DHS	Indiana DHS – Hazardous Materials Incidents	800.669.7362	800.423.0765		
Ohio EMA	Ohio EMA	614.889.7150	614.889.7150		
Kentucky Emergency Management (KYEM)	KYEM Communication Information Center	800.255.2587	800.255.2587		
Indiana Department of Environmental Management	Southeast Region Field office OSC Jared Sawin	888.233.7745 (24-hr spill number)	812.216.0130 Fax 812.358.2058	jsawin@idem.in.gov	
Indiana State Historic Preservation Officer	John Goss		317.232.4020	dhpa@dnr.state.in.us	
Ohio State Historic Preservation Officer	Rachel Tooker		614.298.2000	rtooker@ohiohistory.org	
Kentucky State Historic Preservation Office	Craig Potts		502.564.7005	Craig.potts@ky.gov	
ORGANIZATION	NAME	EMERGENCY #	OFFICE #	Email	Other(Radio)
Federal					
National Response Center	National Response Center	800.424.8802	800.424.8802		
U.S. EPA – Region 5	U.S. EPA Region 5 Spill Phone	312.353.2318 (24-hr spill number)	312.353.2318		
U.S. EPA – Region 5	OSC Steve Renninger	513.260.7849	859-594-6551	renninger.steven@epa.gov	
U.S. EPA – Region 4	U.S. EPA Region 4	404.562.8700 (24-hr spill number)	800.564.7577		
USCG	Sector Ohio Valley Kathy Pfeifer (Planning)	800.253.7465	502.779.5422 502.779.5424 (Louisville)	STL-SMB-SECOHV-CmdCtr@uscg.dhs.gov	VHF Channel 13, 16
USCG	Marine Safety Detachment (MSD) Cincinnati LT Jim Brendel MSTC Jen Bailey	513.623.3585	513.921.9033		VHF Channel 13, 16
USCG National Strike Team	Atlantic Strike Team (for IN and OH)	609.724.0008			VHF Channel 13, 16
USCG National Strike Team	Gulf Strike Team (for KY)	251.441.6601			VHF Channel 13, 16
DOI (Region 5 contact)	U.S. Department of the Interior	215.266.5155	215.266.5155		
DOI (Region 4 contact)	Joyce Stanley - U.S. Department of the Interior	404.852.5414	404.331.4524		
U.S. Army Corps of Engineers	Huntington District Ohio River mile marker 127.2 to 438		304.399.5284		
U.S. Army Corps of Engineers	Louisville District Ohio River mile marker 438 to 981		502.315.6911		
U.S. Army Corps of Engineers	Markland Dam Ohio River mile marker 531.5 Warsaw, KY	859.567.7661	859.567.7661		
U.S. Army Corps of Engineers	Meldahl Dam Ohio River mile marker 436.2 Felicity, OH	513.876.2921	513.876.2921		
NOAA – Wilmington Ohio Weather Forecast Office	1901 South State Route 134 Wilmington, OH 45177		937.383.0031		
Hospitals					

Dearborn County Hospital 600 Wilson Creek Road Lawrenceburg, IN 47025	For responses in the following Indiana Counties: Dearborn County Ohio County Switzerland County		812.537.1010 800.676.5572	http://www.dch.org/	
<u>WEST</u> Mercy Franciscan Hospital – Western Hills 3131 Queen City Ave Cincinnati, OH 45238			513.389.5000		
<u>CENTRAL</u> University Hospital 234 Goodman Street Cincinnati, OH 45219	Hamilton County		513.584.1000		
<u>EAST</u> Mercy Hospital – Anderson 7500 State Road Cincinnati, OH 45238			513.624.4500		
Mercy Hospital Clermont 3000 Hospital Drive Batavia, OH 45103	Clermont County		513.732.8200	http://e-mercy.com/facility_clermont.asp	
Brown County General Hospital 425 Home Street Georgetown, OH 45121	Brown County		937.378.7500	http://www.browncountygeneralhospital.org/	
Adams County Regional Medical Center 230 Medical Center Drive Seaman, OH 45679	Adams County		937.386.3400		
Gateway Rehab at Florence 5940 Merchant Drive, Florence, KY, 41042	Boone County		859.426.2400	http://www.gatewayflorence.com	
St. Elizabeth Florence 4900 Houston Road, Florence, KY, 41042	Boone County		800.212.5200	http://www.stelizabeth.com	
St. Elizabeth Fort Thomas 85 N. Grand Avenue, Ft. Thomas, KY, 41075	Campbell County		859.572.3529	http://www.stelizabeth.com	
Healthsouth Rehab Edgewood 201 Medical Village Drive, Edgewood, KY, 41017	Kenton County		800.860.6004	http://www.healthsouthkentucky.com	
NorthKey Community Care 502 Farrell Drive, Covington, KY, 41012	Kenton County		859.578.3200	http://www.nothkey.org	
St. Elizabeth Covington 1500 James Simpson Jr. Way, Covington, KY, 41011	Kenton County		859.655.8800	http://www.stelizabeth.com	
St. Elizabeth Edgewood 1 Medical Village Drive, Edgewood, KY, 41017	Kenton County		859.301.2270	http://www.stelizabeth.com	

1. Incident name:	2. Operational Period # 2			ICS – 206 MEDICAL PLAN OHIO RIVER - CINCINNATI SUB-AREA SPILL RESPONSE PLAN
	From		To	

3. First Aid Stations

Name	Location	EMT (On-Site)		Phone	Radio
		Yes	No		
		<input type="checkbox"/>	<input type="checkbox"/>		
		<input type="checkbox"/>	<input type="checkbox"/>		
		<input type="checkbox"/>	<input type="checkbox"/>		
		<input type="checkbox"/>	<input type="checkbox"/>		

4. Transportation (Ground and/or Ambulance Services)

Name	Location	EMT (On-Site)		Phone	Radio
		Yes	No		
		<input type="checkbox"/>	<input type="checkbox"/>		
		<input type="checkbox"/>	<input type="checkbox"/>		
		<input type="checkbox"/>	<input type="checkbox"/>		
		<input type="checkbox"/>	<input type="checkbox"/>		

5. Hospitals

Name	Location	Helipad		Burn Center		Phone	Radio
		Yes	No	Yes	No		
		<input type="checkbox"/>	<input type="checkbox"/>	<input type="checkbox"/>	<input type="checkbox"/>		
		<input type="checkbox"/>	<input type="checkbox"/>	<input type="checkbox"/>	<input type="checkbox"/>		
		<input type="checkbox"/>	<input type="checkbox"/>	<input type="checkbox"/>	<input type="checkbox"/>		
		<input type="checkbox"/>	<input type="checkbox"/>	<input type="checkbox"/>	<input type="checkbox"/>		

6. Special Medical Emergency Procedures

--	--

Prepared By: (Name/Title) _____	Date/Time: _____
Approved by: (Name/Title) _____	Date/Time: _____

1. Incident name: _____	2. Operational Period # 2				ICS – 223 HEALTH AND SAFETY MESSAGE OHIO RIVER - CINCINNATI SUB-AREA SPILL RESPONSE PLAN
	From	_____	To	_____	

3. Potential Hazards

--

4. General Safety Concerns

--

5. Additional Information

A site-specific health & safety plan must be developed at the onset of a response action to ensure the health and safety of response personnel. The FOSC is responsible for the overall site health and safety concerns. The FOSC or his/her delegate, should monitor all health and safety related issues. Safety guidelines concerning worker health and safety are outlined in 29 CFR 1910.120 and shall be consulted in the development of the health and safety plan.

Prepared By: (Name/Title) _____	Date/Time: _____
Approved by: (Name/Title) _____	Date/Time: _____

ATTACHMENT 1

INDIANA AND OHIO INLAND SENSITIVITY MAPS

Use Inland Sensitivity Maps to identify Sensitive Species, Natural Resource Areas. The Inland Sensitivity Maps are can be accessed on the CD through the Inland Sensitivity Maps folder. See instructions below.

OHIO RIVER MILE MARKER 401.3 TO 531.5

Upon opening the Inland Sensitivity Atlas, the home screen will appear as follows:

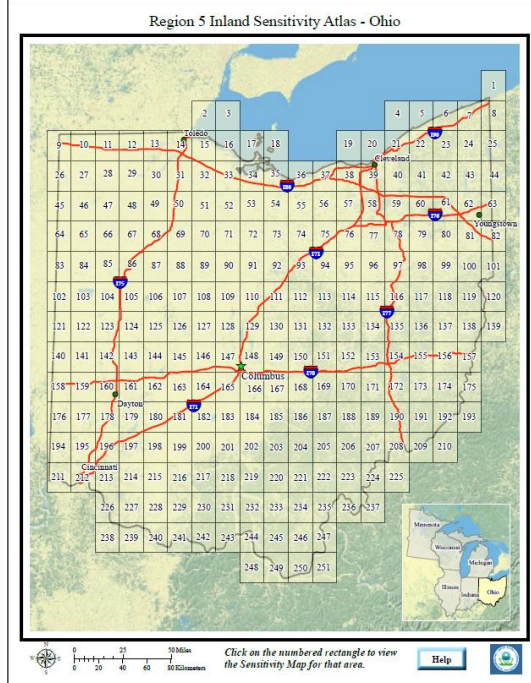


To access maps, legend, data tables, and other information, click on the Maps tab. The content tab will appear as follows:

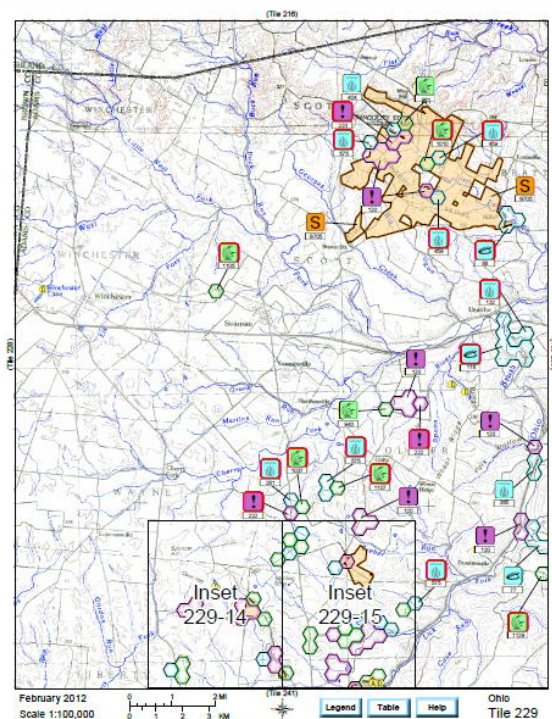


Click on the appropriate tab to navigate to the desired section. To open the main map click the Maps tab.

The main map will open as a separate pdf and appears as follows:

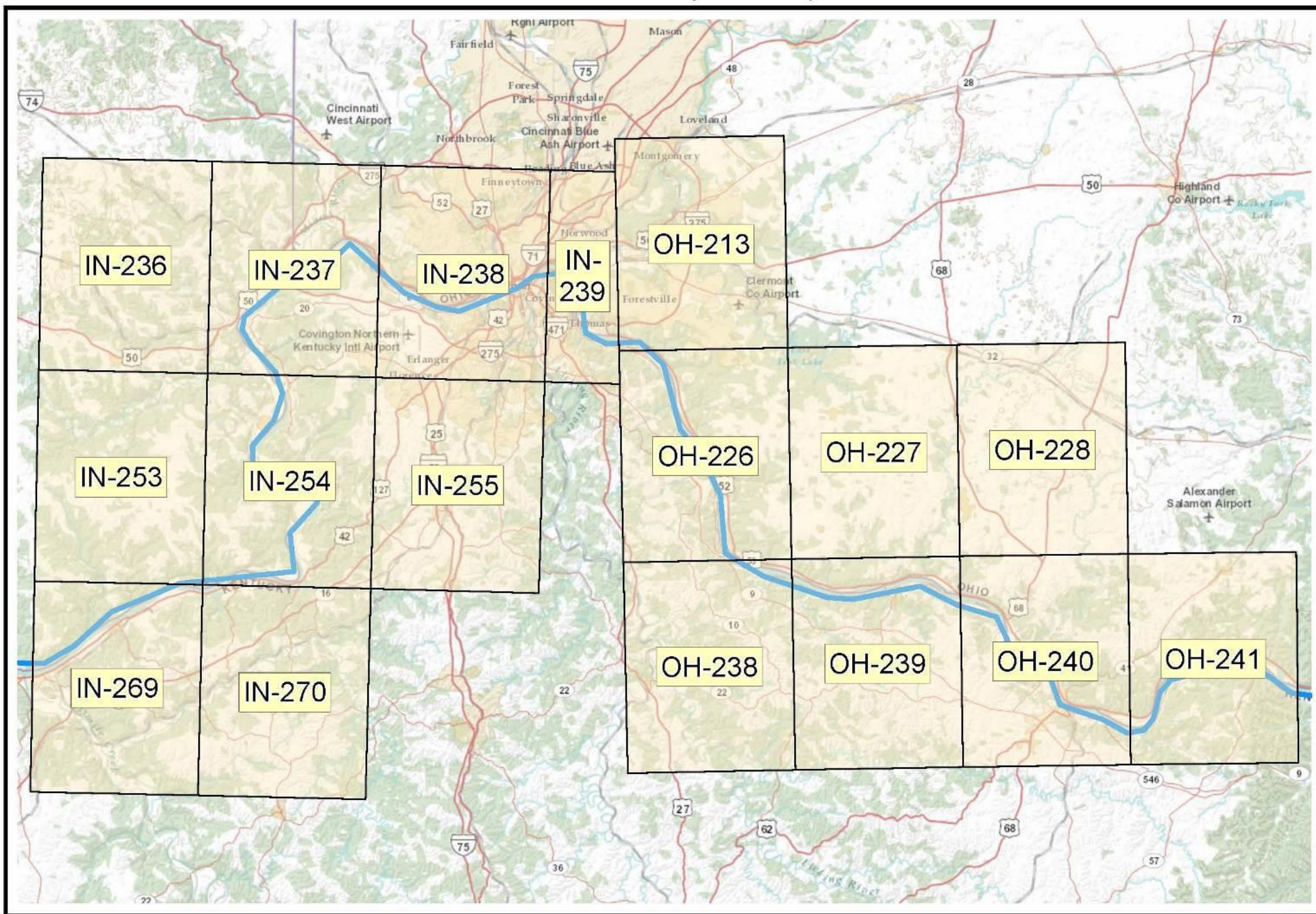


Select a grid tile and click on it to open the correlated map. It will open as a separate pdf and appear as follows:



The content tab will remain open so that you can access the legend, data tables, or other information while viewing maps.

Cincinnati Environmental Repsonse Operations Plan



[Help](#)

Click on the numbered rectangle to view the Sensitivity Map for that area.



MAP LEGEND

SENSITIVE SPECIES



Aquatic/Riparian Zone



Plant



Bird



Amphibian and/or Reptile



Mammal



Invertebrate



Fish



Natural Community



Terrestrial Zone



Plant



Bird



Amphibian and/or Reptile



Mammal



Invertebrate



Natural Community



Multiple Species Grouping



Icon Indicating Threatened or Endangered Status

NATURAL RESOURCE AREAS



Federal Managed Area



State Managed Area



Regional Managed Area



Private Managed Area



Other Environmentally Sensitive Aquatic Area



Other Environmentally Sensitive Terrestrial Area



Sole Source Aquifers



Tribal Land



Federal Designated Area



State Designated Area



Regional Designated Area



Private Designated Area



Trout Stream

OTHER SENSITIVE RESOURCES



Marina



Navigational Lock or Dam



Water Intake (nonpotable)



Water Intake (potable)

SHORELINE SENSITIVITY

Low Sensitivity

Low-Medium Sensitivity

Medium-High Sensitivity

High Sensitivity

POTENTIAL SPILL SOURCES



Fixed Oil Storage Facility



Marine Transfer Facility and/or Facility with more than 1 million gallons



Hazardous Materials Site



Pipeline

RESPONSE STRATEGIES



Containment Site



Diversion Site



Exclusion Site



Other Site



Boom Cache



Outfall Site

RESPONSE CONSIDERATIONS



Boat Access



Non-navigational Dam



Historic Site (Data only, not shown on maps)

BOUNDARY DESIGNATIONS



County Boundary



EPA/Coast Guard Jurisdictional Boundary



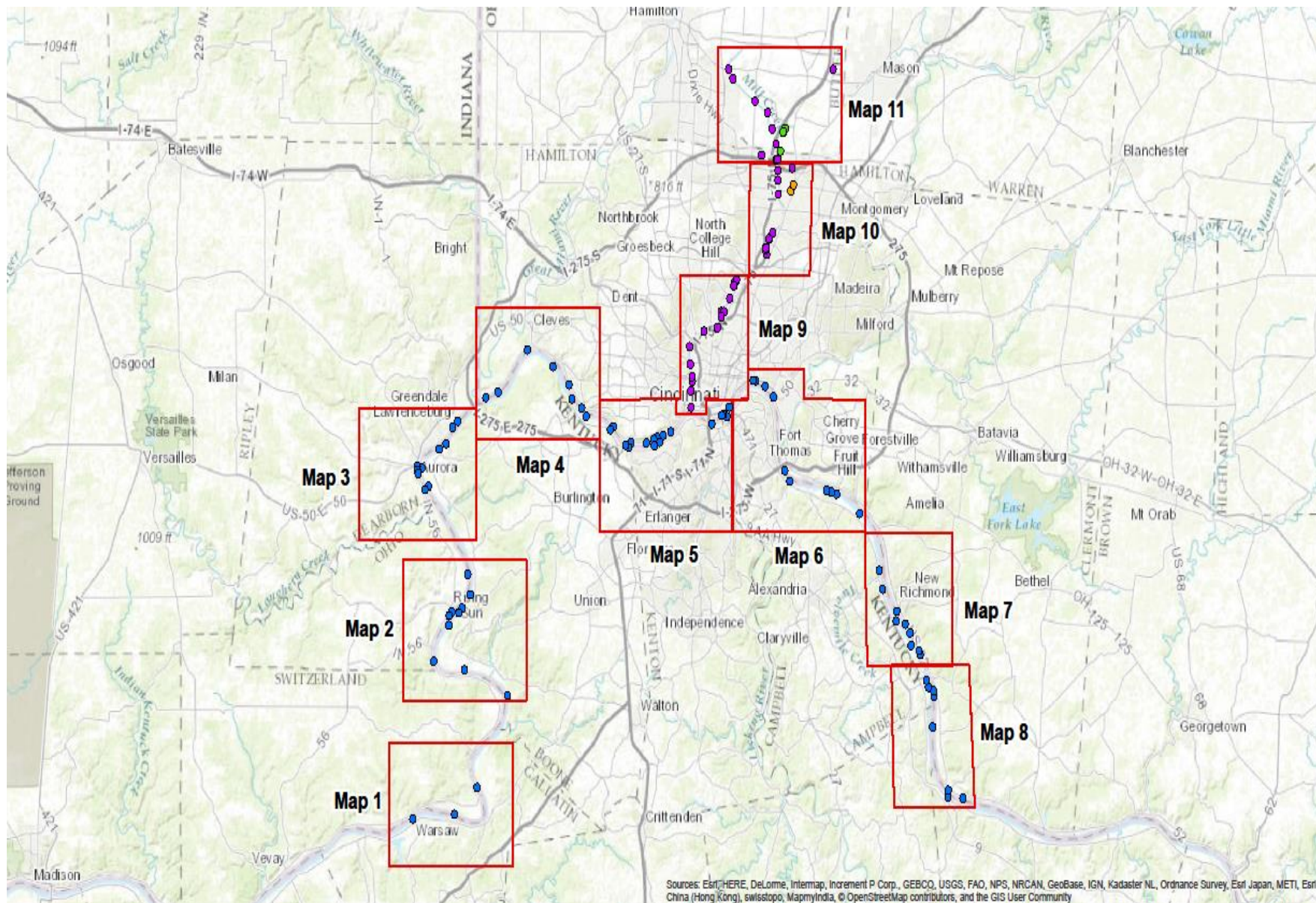
Pipeline Inset Boundary

ATTACHMENT 2

CINCINNATI AREA OHIO RIVER WATERSHED RESPONSE PLAN

(Note: An example map is shown on the following page. The complete Mill Creek Response Plan will be included as a separate file on the EPA project website. The response plans for the following waterways are under development: Great Miami River, Little Miami River, and Ohio River.)

The Cincinnati Response Points Map Overview (image below) shows the regions specific stream point data broken up into 11 individual maps. The maps can be accessed on the CD through the Cincinnati Stream Spill Figures document. Click on the color coded point (on the Cincinnati Stream Spill Figure) to open the correlating data sheet for that stream or river access point. See instructions below.



Sources: Esri, HERE, DeLorme, Intermap, InCREMENT P Corp., GEBCO, USGS, FAO, NPS, NRCAN, GeoBase, IGN, Kadaster NL, Ordnance Survey, Esri Japan, METI, Esri China (Hong Kong), swisstopo, MapmyIndia, © OpenStreetMap contributors, and the GIS User Community

The following pages are examples of the stream point data sheets that are linked to the Cincinnati Response Points Map Overview.

OR_C_466.4



Ohio River

River

Ohio Hamilton Cincinnati Fire Dept 513-352-6220
Latitude: 39.11839 Latitude (DMS): 39-07-05.84
Longitude: -84.44959 Longitude (DMS): 94-26-58.95
Type of Access: Public Access by: Land/Water
Schmidt Field Boat Launch. Via Riverside Dr. (US-52) south on Watson St.
Follow signs to boat launch.

Containment Type: Containment Booming Preferred

Water Description

Channel Depth (FT): 25-30 Channel Width (FT): 1500 Bottom Type: Gravel
Water Depth (FT): Channel Shape: OTHR Collect From: **RIGHT**

Bank Description

Left Bank

Right Bank

Geometry: Sloped

Sloped

Description: KY

Paved boat ramp.

Distance (FT): 0

0

Operational Distance (FT): 40

Operational Area Description: Paved boat ramp with staging available in adjacent parking area.

Comments: Channel width and depth may vary depending on river conditions. 5 - 6 vacuum trucks may operate here. Staging available in adjacent parking lot.

Equipment and PPE <https://www.law.cornell.edu/cfr/text/29/1926.106>

Boom Length (FT): 1500 Vertical Draw (FT): 10 Boat Required: ☒

Hose Length (FT): 200 Permanent Anchors Available: ☐

Additional Comments: PFD, waders recommended. Boom length and angle are to be determined by the river conditions at the time of the response.

For additional containment strategies visit: <http://www.gchmcc.org/>

Information By: Farmer/Lohner 6/18/2015

Adjacent Property Information:

Cincinnati Recreation Commission Phone: 513-352-4027
Lois Finnell 24HR -Phone:
805 Central Ave
Cincinnati OH 45202
Comments: Lois.Finnell@cincinnati-oh.gov

☐ Access Agreement Needed

☐ Access Agreement On File

OR_C_466.4
OPERATIONS
AERIAL VIEW



Boom length and angle are to be determined by the river conditions at the time of the response.

OR_C_466.4
RIVER VIEW



OR_C_483.1**Ohio River**

River

Ohio Hamilton Cincinnati Fire Dept 513-352-6220
Latitude: 39.11959 Latitude (DMS): 39-07-10.48
Longitude: -84.70228 Longitude (DMS): 84-42-08.27
Type of Access: Public Access by: Land/Water
Fernbank Park. Via River Rd. (US-50), south on Thornton Rd., left on Forbes Rd.
Follow signs for "Bank Fishing" near Fernbank Lodge.

Containment Type: Containment Booming Preferred

Water Description

Channel Depth (FT): 25-30 Channel Width (FT): 1500 Bottom Type: Muck

Water Depth (FT): Channel Shape: OTHR Collect From: **RIGHT****Bank Description****Left Bank****Right Bank**

Geometry: Sloped

Sloped

Description: KY

Concrete/gravel road to concrete bank.

Distance (FT): 0

20

Operational Distance (FT): 60

Operational Area Description: Paved/gravel area for vaac truck. Staging available in adjacent parking lot.

Comments: Concrete bank. Anchor located 45 ft upstream from steps and 17 ft down from top of concrete. Channel width and depth may vary depending on river

Equipment and PPE <https://www.law.cornell.edu/cfr/text/29/1926.106>Boom Length (FT): 1500 Vertical Draw (FT): 25 Boat Required: ☒Hose Length (FT): 200 Permanent Anchors Available: ☒

Additional Comments: PFD, waders recommended. Boom length and angle are to be determined by the river conditions at the time of the response.

For additional containment strategies visit: <http://www.gchmcc.org/>

Information By: Farmer/Lohner 6/18/2015

Adjacent Property Information:

Great Parks of Hamilton County Phone: (513) 429-9468

Tom Doyle, Chief Ranger 24HR -Phone: (513) 713-3535

25 Bachman St.

Cincinnati OH 45218

Comments: tdoyle9@cinci.rr.com

☐ Access Agreement Needed☐ Access Agreement On File

OR_C_483.1
OPERATIONS
AERIAL VIEW



Boom length and angle are to be determined by the river conditions at the time of the response.

OR_C_483.1
RIVER VIEW



ATTACHMENT 3

LINKS TO RESPONSE PLANS

National Contingency Plan

<https://www.epa.gov/emergency-response/national-contingency-plan-product-schedule-toxicity-and-effectiveness-summaries>

Region 5 Regional Response Team

<http://www.rrt5.org/Home.aspx>

U.S. EPA Region 5 Regional Contingency Plan

http://www.rrt5.org/acp/body/Region5ACP-RCP_revMay2011.pdf

Habitat Fact Sheets

<http://umrba.org/spillplans.htm>

Describes procedures to decontaminate the following habit species if contaminated with oil:

- 1) Deep Marsh Annual
- 2) Deep Marsh Perennial
- 3) Open Water
- 4) Populus Community
- 5) Rooted-Floating Aquatics
- 6) Sedge Meadow
- 7) Shallow Marsh Annual
- 8) Shallow Marsh Perennial
- 9) Submersed Vegetation
- 10) Wet Meadow

U.S. EPA Region 4 Ohio River Umbrella Plan

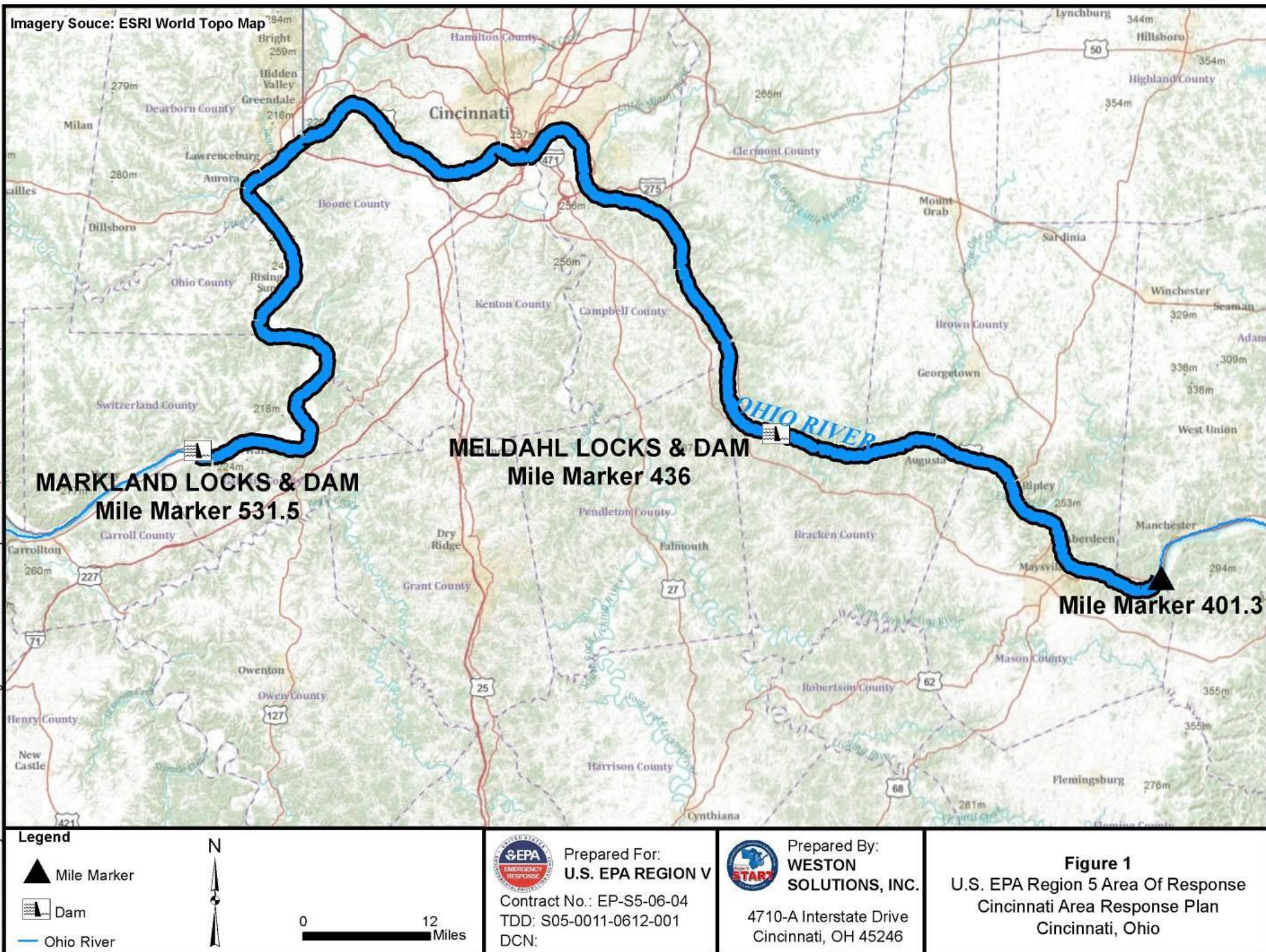
https://archive.epa.gov/emergencies/content/fss/web/pdf/a_smith_04.pdf

USCG Response Resource Inventory

<https://cgrri.uscg.mil/UserReports/WebClassificationReport.aspx>

ATTACHMENT 4

OVERVIEW MAP OF AREA OF RESPONSE



ATTACHMENT 5

GCHMCCU RESPONSE TRAILERS

G.C.H.M.C.C.
Response Trailer Unit 1
Located at the Cremer Terminal



3117 Southside Ave.
Cincinnati, Ohio 45204
(513) 471-7200

Greater Cincinnati Harbor & Maritime Co-Operative Committee
CO-OP BUILDING

Co-op Building Contents	
•	1- #20 ABC Fire Extinguisher
•	2- 100' Extension Cords (12/3 wire)
•	2- Floating Boom Markers with Lights
•	2- Reese Hitches with 2&5/16" Balls
•	1- Buoy Float (marker balls)
•	1- Bundle of Absorbent Pads
•	3- Large Bags of White Absorbent pads(3'x3')
•	1- Bag of 5"x10' White Absorbent Booms
•	3- Waste away Drum Containers (fold away totes/8c.ft. max fill)
•	2- Buckets of Floating Balls for Spill Exercises
•	5- Spare Pole Floats
•	1- Medium Steel Funnel

Greater Cincinnati Harbor & Maritime Co-Operative Committee
7' wide x 14' long CO-OP TRAILER

Co-Op Trailer Contents (Lower Rear Compartment)	
•	3- Super Sack Containers
•	1-Pitchfork
•	4-Digging Shovels
•	2-Square Point Shovels
•	1-Corn Broom
	1-Fish net
•	2- Leaf Rakes (one with extend a pole)
•	1-Sledge Hammer
•	1-Axe
•	1-Gas Generator
•	3- 6' Stakes
•	1- 4' Stake
•	2-Gravel Racks
•	1- Skim Pak (Portable Hand Weir)
•	5-Bundles of White Absorbent Pads
•	2-Plastic Wide Shovels
•	2-Bags of Rolled 5" x 10' White Sorbent Booms
•	1 - Plastic Containment Pan
•	2- Plastic Containment Pan
•	
Co-op Trailer Contents (Upper Rear Compartment)	
•	4-100' Sections of Foam Filled Containment Booms
•	2-50' Sections of Foam Filled Containment Booms

Greater Cincinnati Harbor & Maritime Co-Operative Committee
7' wide x 14' long CO-OP TRAILER

Co-op Trailer Contents (Front Compartment)	
•	1-Spool of 3/8" Rope
•	2-Throw Floating Life Savers (1-ring style, 1-bag style)
•	1-Hand Held Megaphone (contain 3-c-cell batteries)
•	1-Box of Boom Connector Pins (swivel and lock)
•	1-Set of Wheel Chocks
•	1- 2' Step Ladder
•	13- Pairs of Green Rubber Gloves
•	22- Pairs of Leather Gloves
•	22- Pairs of Black Rubber Gloves
•	25- Tyvek White Coveralls
•	2-Large Rain Suits
•	2-XL Rain Suits
•	2-3X Rain Suits
•	1 Toolbox:
○	2- Flash Lights
○	1-Hammer
○	1-Funnel
○	1-Channel Locks
○	1-Plier
○	3-Utility Knives
○	5-Flat Head Screw Drivers
○	3-Phillips Head Screw drivers
○	1- 8" Adjustable Wrench
○	18-Rolls of Electrical Tape
•	1-Heavy duty bolt cutter

Greater Cincinnati Harbor & Maritime Co-Operative Committee
7' wide X 14' long Co-op Trailer

Co-op Trailer Contents (Front Compartment)
• 4-Orange Safety Life Vests
• 10-Orange Safety Cones
• 1-Roll of Caution Tape
• 18-Rolls of Duct Tape
• 1-Emergency Light Set on Tripod (two lights)
• 10-Bungee Cords
• Precut Ropes 3/8" dia. (4-7', 4-10', 4-25' section with looped ends)
• 1-Tank Plug Kit
• 2-Boxes of Universal Sorbents Pads
• 2-Tow Bridles
• 1-Post Driver
• 2-24" Pipe Wrenches

Reviewed and Updated 11/05/2019

G.C.H.M.C.C.

Response Trailer Unit 2

Located at the BP Terminal



409 River Road
Bromley, KY 41017
(859) 261-8605

Greater Cincinnati Harbor & Maritime Co-Operative Committee
7'wides 14' long CO-OP Trailer

RESPONSE TRAILIER UNIT 2
• 1-1/2" X 75' Rope
• 2-1/2" X 100' Rope
• 2-1/2" X 50' Rope
• 4-1/2" X 25' Rope
• 7-Pair of black pull over rubber boots
• 6-Pair of yellow pull over rubber boots
• 2-Sets of steel wheel chocks
• 1-Reese 5 ¼ drop hitch w/ 2- 5/16 "ball
• 20-Clear Safety Glasses
• 6-Rolls of duct tape
• 5- Rolls of electrical tape
• 2-Mag flashlights
• 7- D-Batteries
• 1-Can of WD40
• 1-Box of 12" X 12" cellulose based non-aggressive spill socks
• 300' ½" nylon rope
• 4-Packs of brown Jersey gloves
• 20-Pair of rubber gloves
• 4-Packs of leather gloves
• 12-Rain suits XL,XXL,XXXL
• 20-XXXL white overalls
• 20-Large white overalls
• 1-Post driver
• 1-Husky tripod work light
• 1-Plastic step ladder
• 1-24" Pipe wrench
• 1-tank stop leak kit
• 1-Rescue throw bag
• 1-Rescue throw ring
• 1-Rolyan anchor buoy

Greater Cincinnati Harbor & Maritime Co-Operative Committee
7'wide x 14' long CO-OP Trailer

RESPONSE TRAILIER UNIT 2
• 1-Axe
• 1-Sledgehammer
• 2-Shovels
• 3-Bundles of white absorbent pads
• 3-Bundles of 3" white absorbent socks w/clips
• 1-2" Female to 1"male nozzle
• 27 Bags of gray absorbent ?
• 1-Universal spill kit
• 500' Yellow boom
• 1-Tool box
• 2-Channel locks
• 1-Hammer
• 1-Adjustable wrench
• 1-Plier
• 4-Razor knives
• 1-Pair of scissors
• 8-Screwdrivers
• 1-Generator
• 2-Anchors
• 1-First aid kit
• 1-Fire extinguisher
• 1-Drum siphon
• 2-Bungee cords
• 4-24" Bungee cords
• 4-36" Bungee cords
• 9-Life jackets
• 1-Boom bridle w/pin and 6' of rope
• 1-Heavy duty bolt cutter

Reviewed and Updated 11/05/2019

G.C.H.M.C.C.

(Dale Farmer)

Response Trailer Unit 3

Located at the Cincinnati Biorefining Plant
(Marathon)



4700 Este Ave.
Cincinnati, Ohio 45232
(513) 482-8802

Greater Cincinnati Harbor & Maritime Co-Operative Committee
7'wide x 24'long CO-OP Trailer

RESPONSE TRAILIER UNIT 3
• 1-#5 ABC Fire extinguisher
• 10-Bags of gray absorbent
• 8-Bundles of white absorbent pads
• 4-Bundles of gray absorbent pads
• 1-Roll of gray absorbent pads
• 1-Emergency light
• 1-Stake driver
• 1-Roll of 3/8" rope
• 21-Tyvek suits
• 4-Large Rain suits
• 2-XXXL Rain suits
• 4-XXL Rain suits
• 10-XL Rain suits
• 35-Pairs of black rubber gloves
• 1- Pack of brown jersey gloves
• 15-Pairs of leather gloves
• 1-Box of rubber nitrile gloves
• 3-Rolls of caution tape
• 6-Rolls of duct tape
• 2-50' Extension cords
• 1-#8 Sledgehammer
• 1-Axe
• 2-24" Ridged pipe wrenches
• 1-Tank stop leak kit
• 1-Heavy duty bolt cutter
• Hip Waders 1-sx9, 2 sz11, 2sz12, 1sz14 (Total 6-pairs)

7'wide x 24'long CO-OP Trailer

RESPONSE TRAILIER UNIT 3	
<ul style="list-style-type: none"> ● 1-Black Toolbox 	
○ 2-Flash lights	
○ 4-Utility knives	
○ 4-Screw drivers	
○ 4-Phillips screw drivers	
○ 5-Funnels	
○ 6-Rolls of electrical tape	
○ 1-Hammer	
○ 1-Lineman pliers	
○ 2-Channel lock pliers	
○ 1-#4 Sledgehammer	
<ul style="list-style-type: none"> ● 1-Megaphone ● 6- Sections of shallow water booms (50') ● 1-100' Sections of deep-water boom ● 4-Rolls of white absorbent ● 6-Shovels ● 2-Rakes ● 1-Long handle scraper ● 4-3' Long stakes ● 6-5' Long stakes ● 1- Box of C-Batteries ● 1- Package of bungee cords (12) ● 1- First Aid Kit ● 1-Accountability organizer with cards ● 1-30-amp extension cord 30' long ● 7-Rope bags ● 2- Anchor bars ● 1-Come along 	

Greater Cincinnati Harbor & Maritime Co-Operative Committee
7' wide x 24' long Trailer

RESPONSE TRAILIER UNIT 3
• 3- Boxes white sorbent booms 5" X 50 Folded Sorbents
• 1- 5-Gal safety gas can
• Set of wheel chocks
• Small swimming pool (for spill containment)
• 1-8'-6" X 11'-4" Tarp
• 4- Orange safety tarps
• 5- Orange safety vests
• 36-Boot covers
• 2-Boxes of safety glasses
• 6- Gray hoods (hats)
• 1-Box of ear plugs
• 1-Roll of plastic
• 3-Orange safety cones
• 6-Life jackets
• 1-Rescue throw bag
• 1-Rescue throw ring
• 1-Gas powered generator
• 3-1/2" X 50' Rope
• 2-1/2" X 100' Rope
• 4-1/2" X 25' Rope
• 1-3/8" X 25' Rope
• 4-Walkie talkies Radios
• 2-Walkie talkie chargers
• 2-stools
• 1-Rope launcher kit
• 2-Large carabiners, 2-medium carabiners, 1-small D-ring
• 2- Small shackles
• 2-12" nylon slings
• 2-2/8" rope pulleys
• 4-large quick links, 2-medium quick links

Greater Cincinnati Harbor & Maritime Co-Operative Committee
7' wide x 24' long Trailer

<ul style="list-style-type: none">• 2- Remote controllers for electric tongue jack
<ul style="list-style-type: none">• 1-Battery tender

Reviewed and Updated 11/05/2019

ATTACHMENT 6
RRT5 IN-SITU BURNING ANNEX

REQUIREMENTS

The requirements of this annex apply only to responses under the direct oversight of an FOSC, but its general application is strongly encouraged. The RRT acts as the regional coordinating body for response actions.

1) The appropriate state's approval is always required. In Region 5, the use of ISB as a response tool will be subject to State law and policy. When burning agents are used this is a requirement of the NCP. (See attachments for appropriate state(s) approval processes).

2) In accordance with (IAW) the NCP, US EPA must concur with the FOSCs recommendation to authorize the use of ISB. When burning agents are used this is a requirement of the NCP.

3) As a natural resource trustee, the Department of Interior (DOI) should be consulted with the decision to conduct ISB during a spill response overseen by a FOSC. The responsibility of concurrence is given to DOI as a federal natural resource trustee and because of its authorities, and potential assistance to the FOSC, regarding the Endangered Species Act (ESA) and potential representation of federally recognized tribal governments.

4) As a natural resource trustee, the Department of Commerce (DOC)/National Oceanic and Atmospheric Administration (NOAA) should be consulted when considering ISB. Notification should be from the RRT Co-Chairs via the DOC RRT member. NOAA Scientific Support Coordinator (SSC) should be contacted to assist in the decision-making process and may provide resources at risk.

5) Tribal agency official(s) must be consulted on any decision to use ISB when a burn would reasonably be expected to impact those designated areas of tribal interests.

6) Approval must also be in concert with Canadian federal government officials, adjoining states and/or provinces, and local officials with approving jurisdictions, where deemed appropriate or necessary.

NOTE: In general, the procedures will be the same in Region 4 (e.g., State approval, trustee consultation, RRT concurrence, etc.). However, in-situ burning is not pre-authorized in Region 4. Any decision to consider an in-situ burning application for an oil discharge in Region 4 will require concurrence at the State and RRT co-chair level, as well as consultation with natural resource trustees.