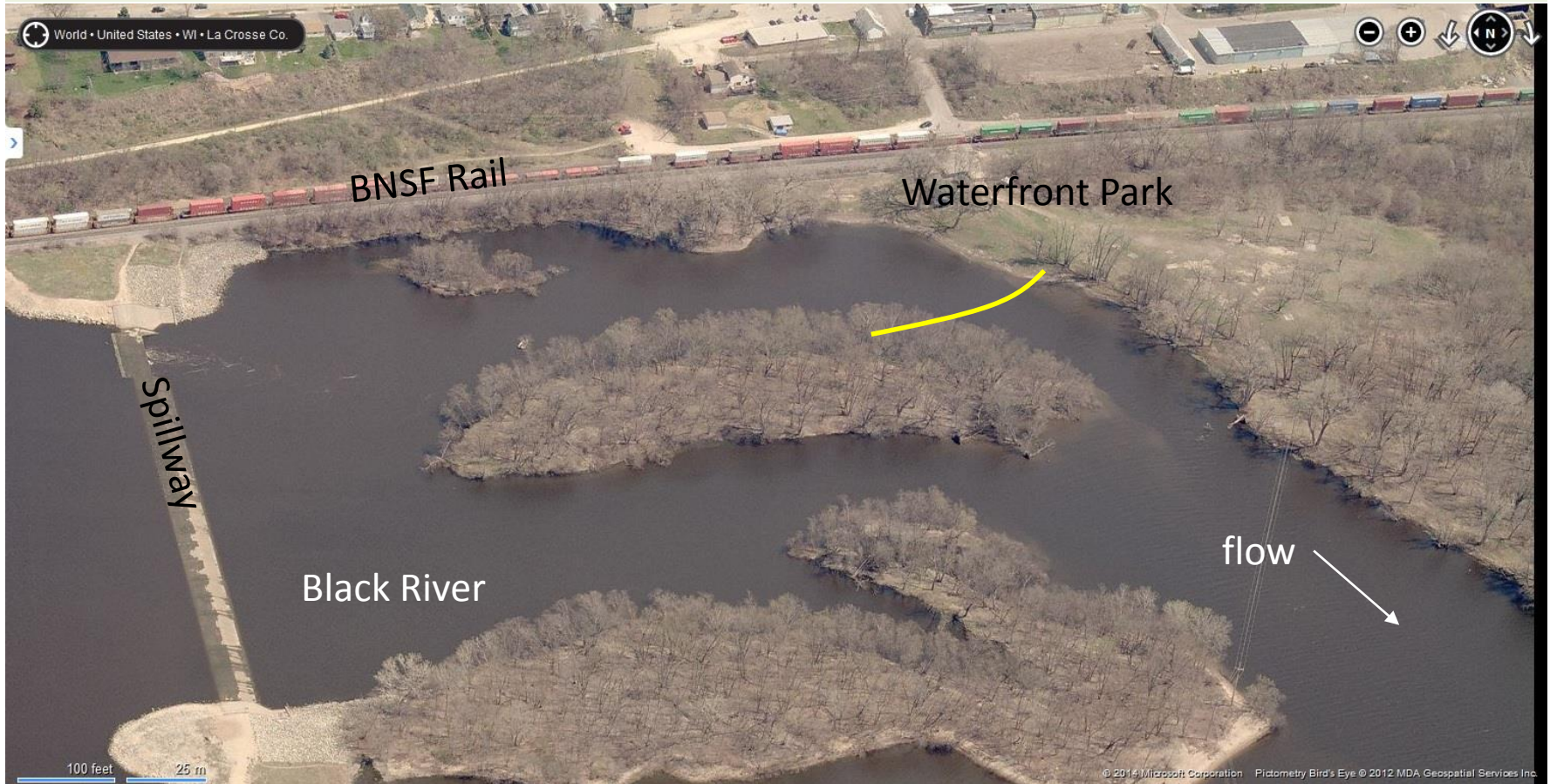


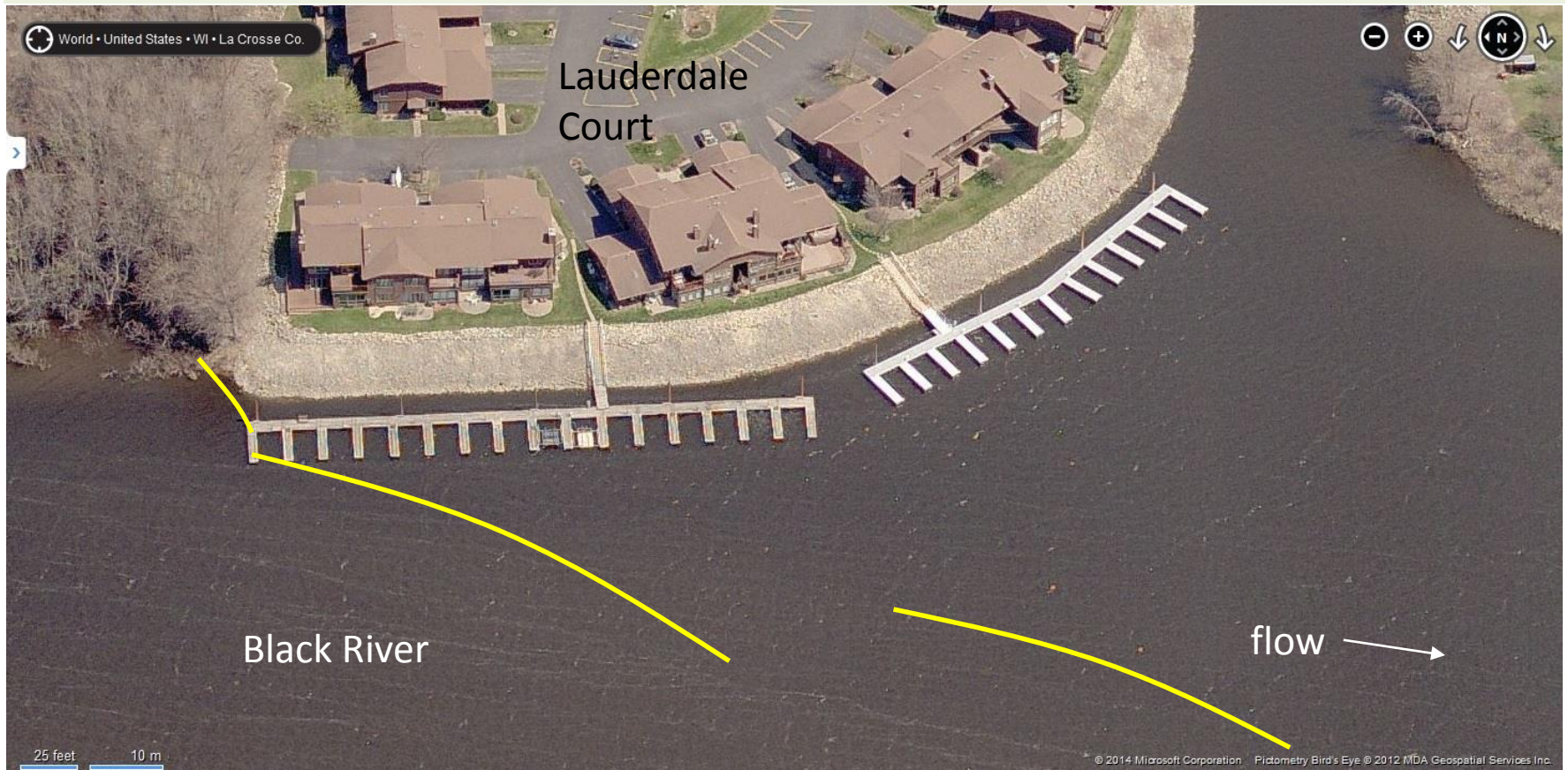
BR5 – Onalaska Spillway

Goal: Collect product flowing over Onalaska spillway to protect downstream resources



BR6 – Lauderdale Court

Goal: Divert spilled product to other shore for collection at I-90



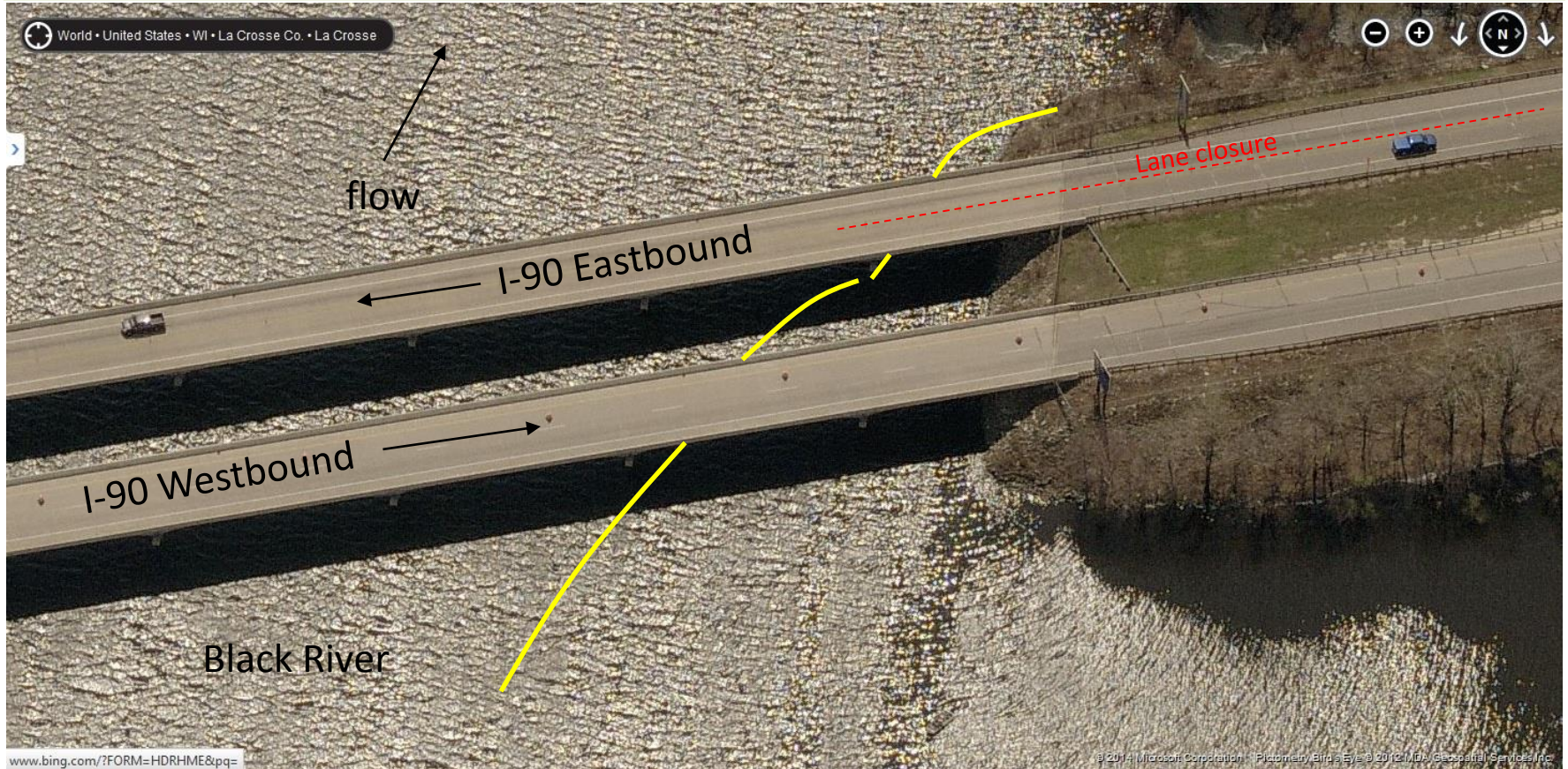
BR7 – Catgut Slough Opening

Goal: Protect homes and docks by keeping spilled product out of Catgut Slough



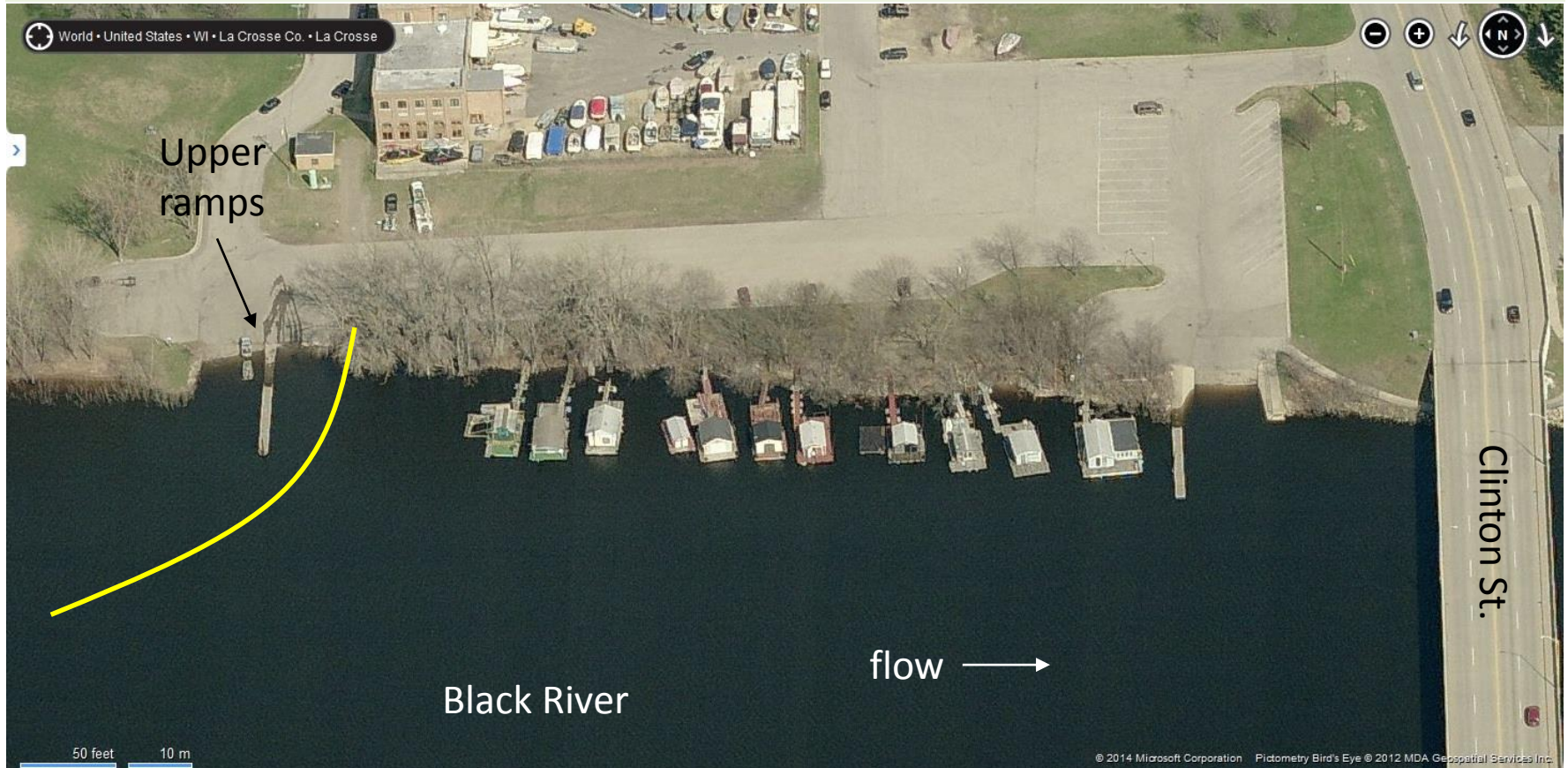
BR8 – I-90 at Black River

Goal: Collect spilled product to protect urban area downstream



BR9 – Northside Beach Ramp

Goal: Collect spilled product if not feasible above urban area



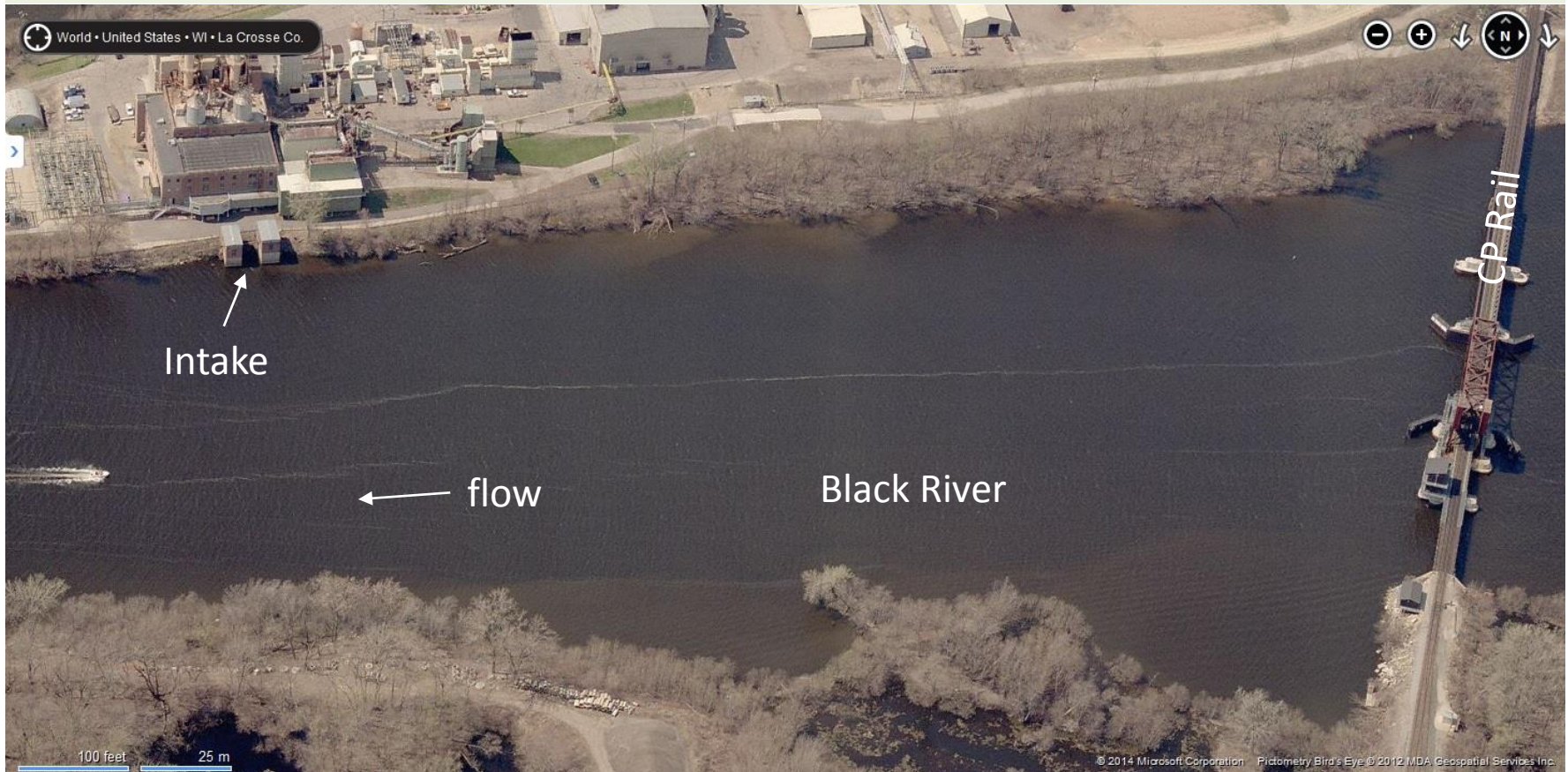
BR10 – Midwest Fuels

Goal: Collect spilled product if not feasible above urban area



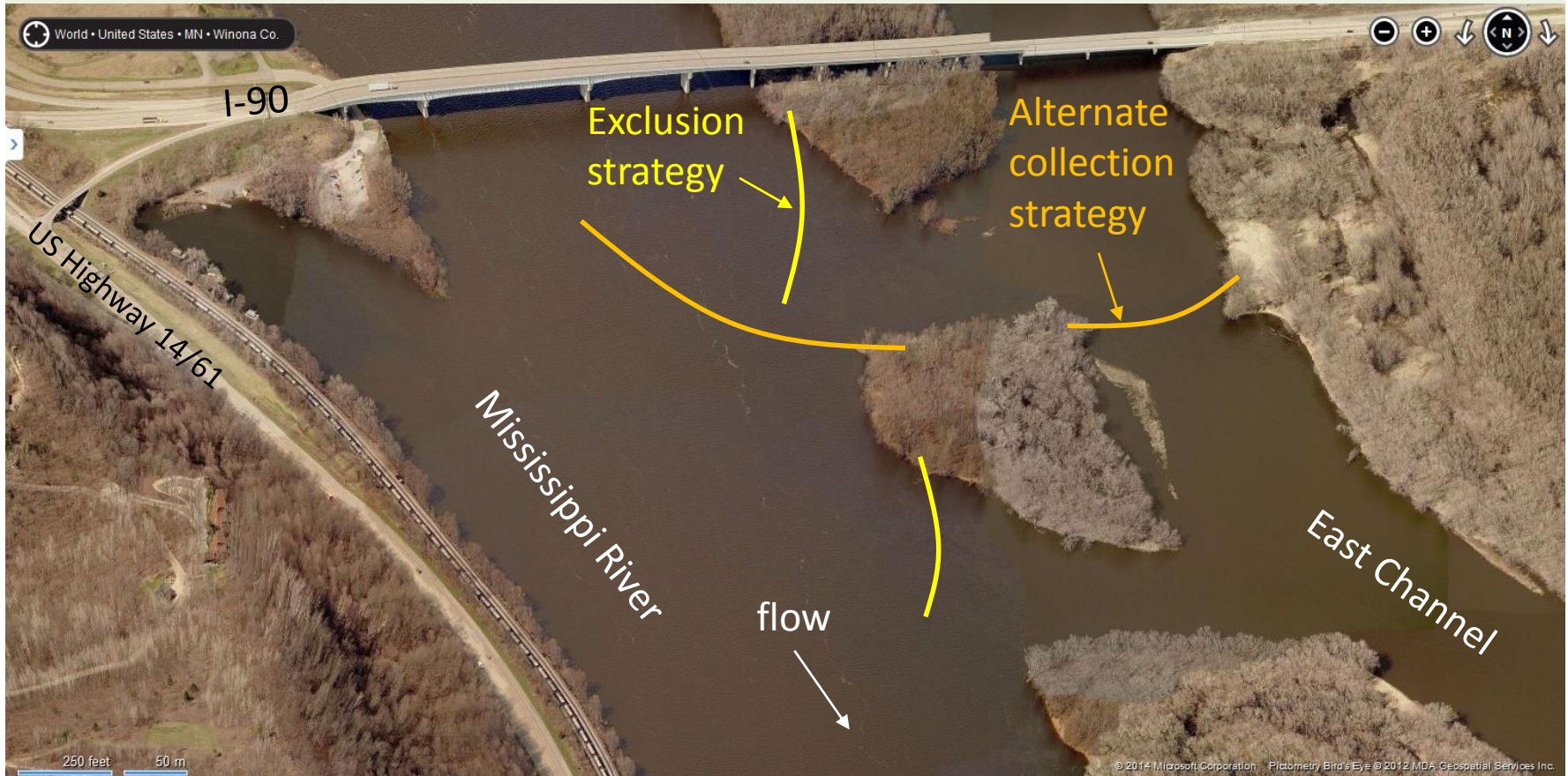
BR11 – Xcel Energy French Island Plant

Goal: Notify facility of spill, protect intake if help is requested



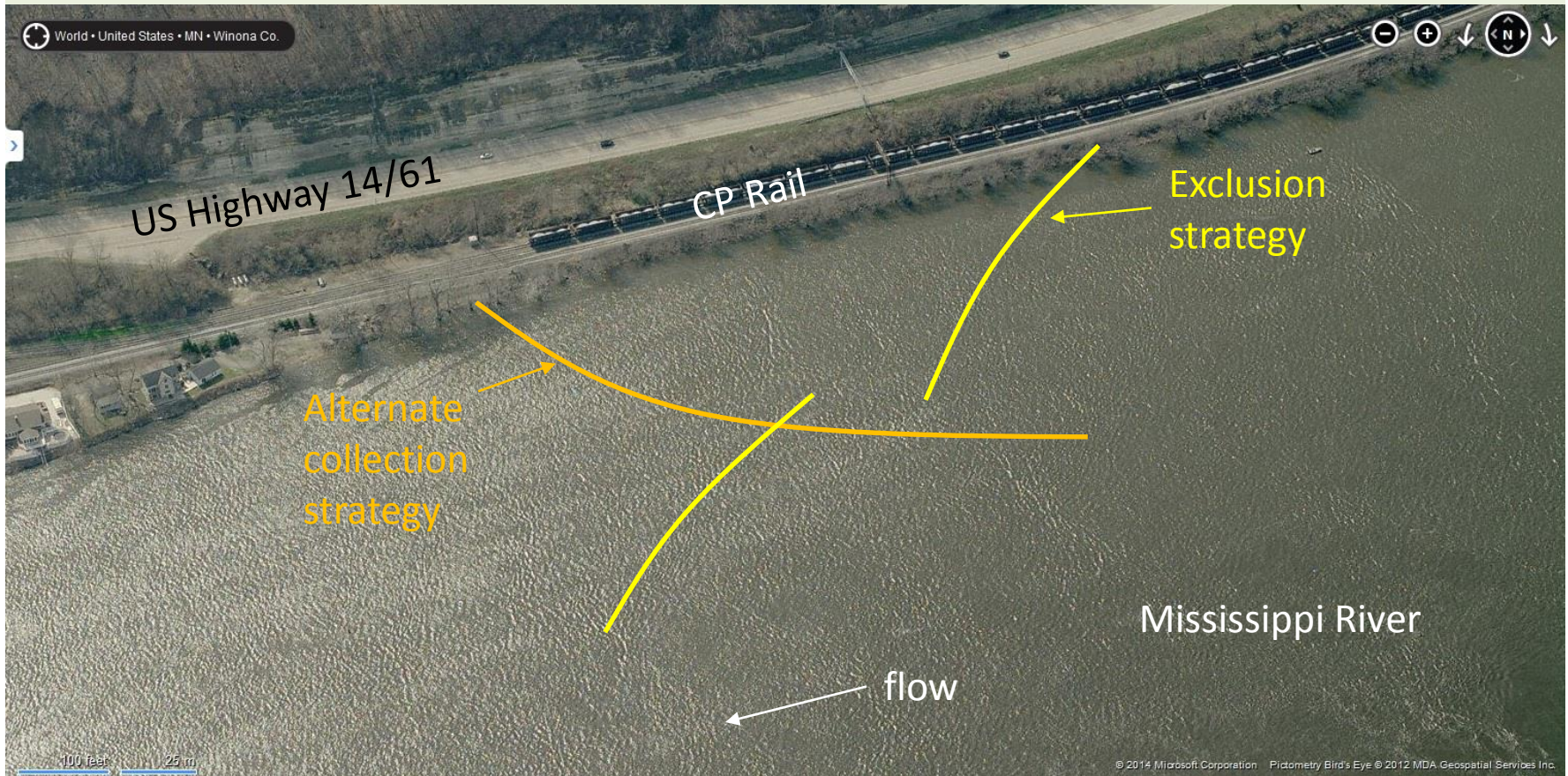
701a

Goal: Boom to keep spilled product from entering East Channel



701b

Goal: Collect oil along railroad or exclude from shore to protect downstream homes



699a

Goal: Divert spilled product into culvert for collection in low area between roads



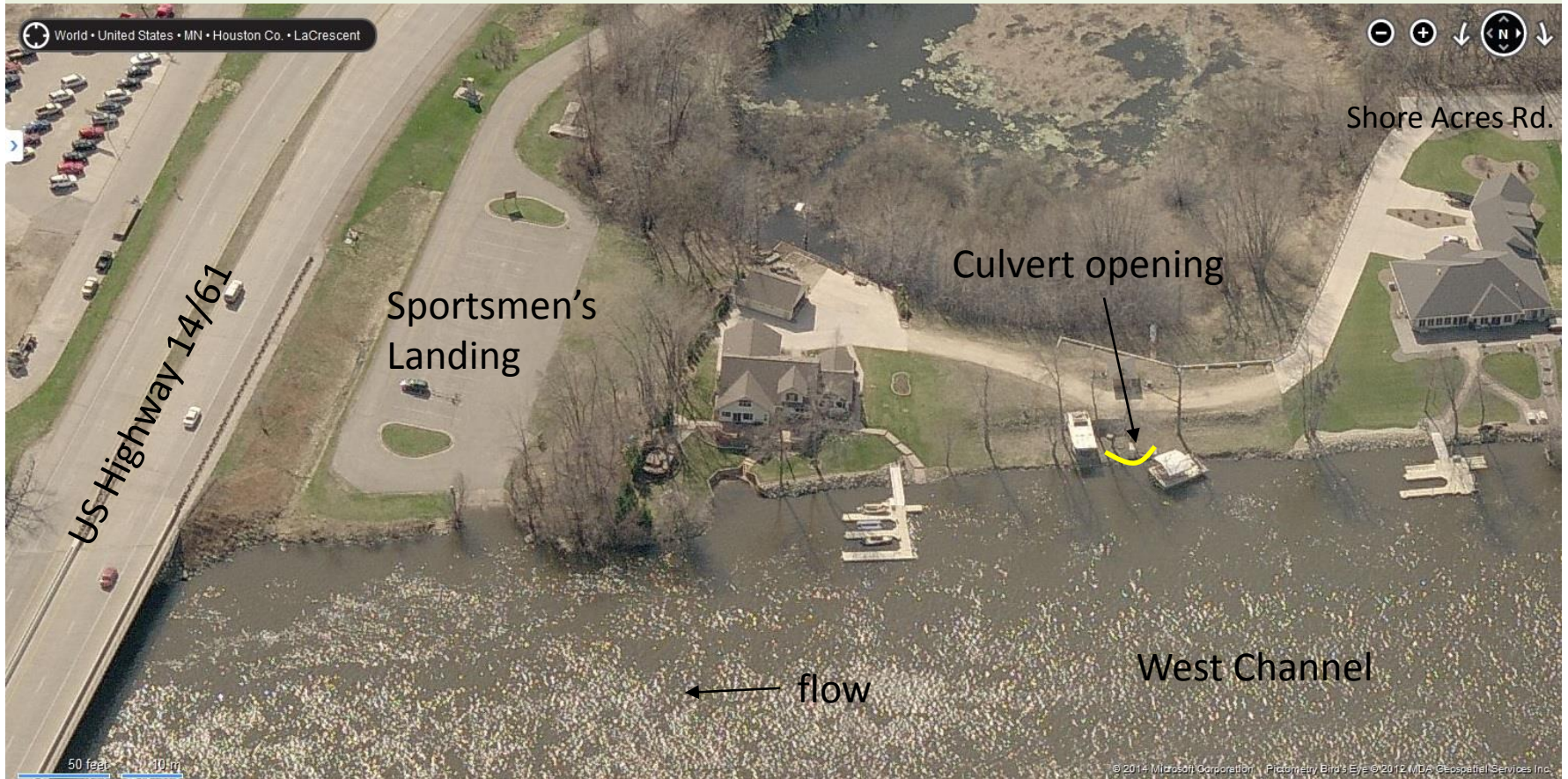
699c – Blue Lake 1

Goal: Close culvert for prevent spilled product from spreading into Blue Lake



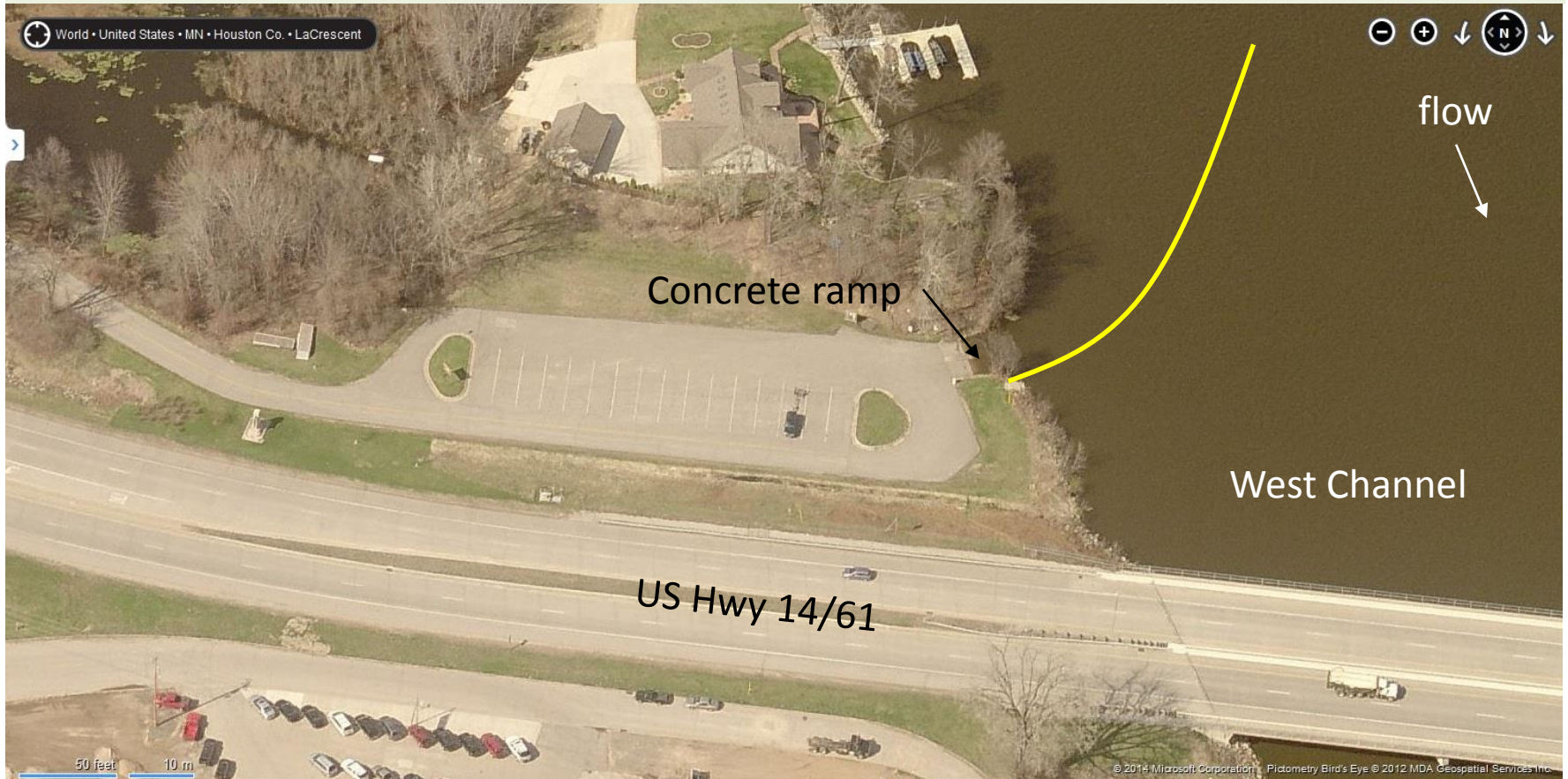
699b – Blue Lake 2

Goal: Close culvert for prevent spilled product from entering Blue Lake backwaters



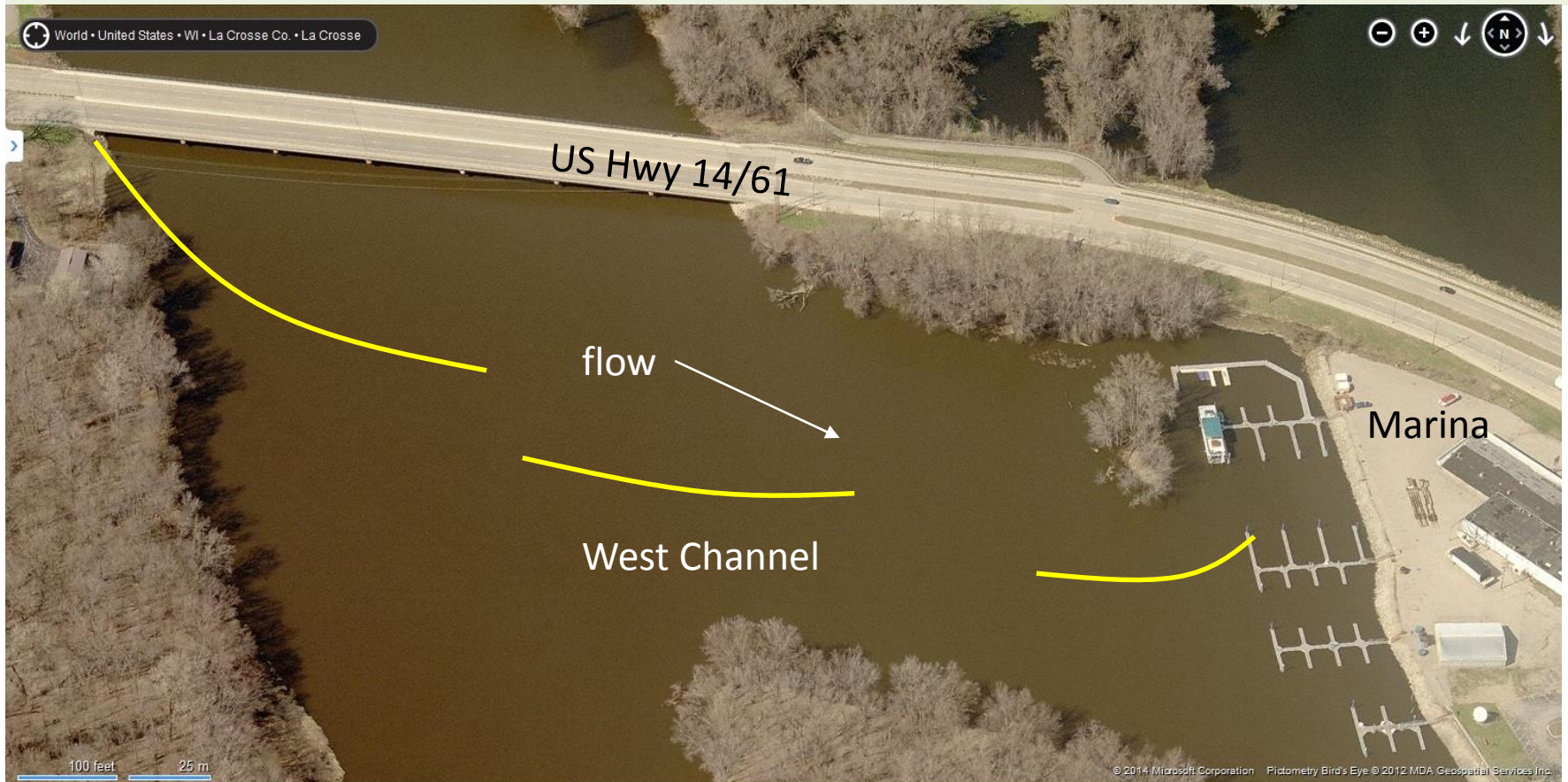
698a – Sportsmen's Landing

Goal: Collect spilled product in West Channel to protect downstream resources



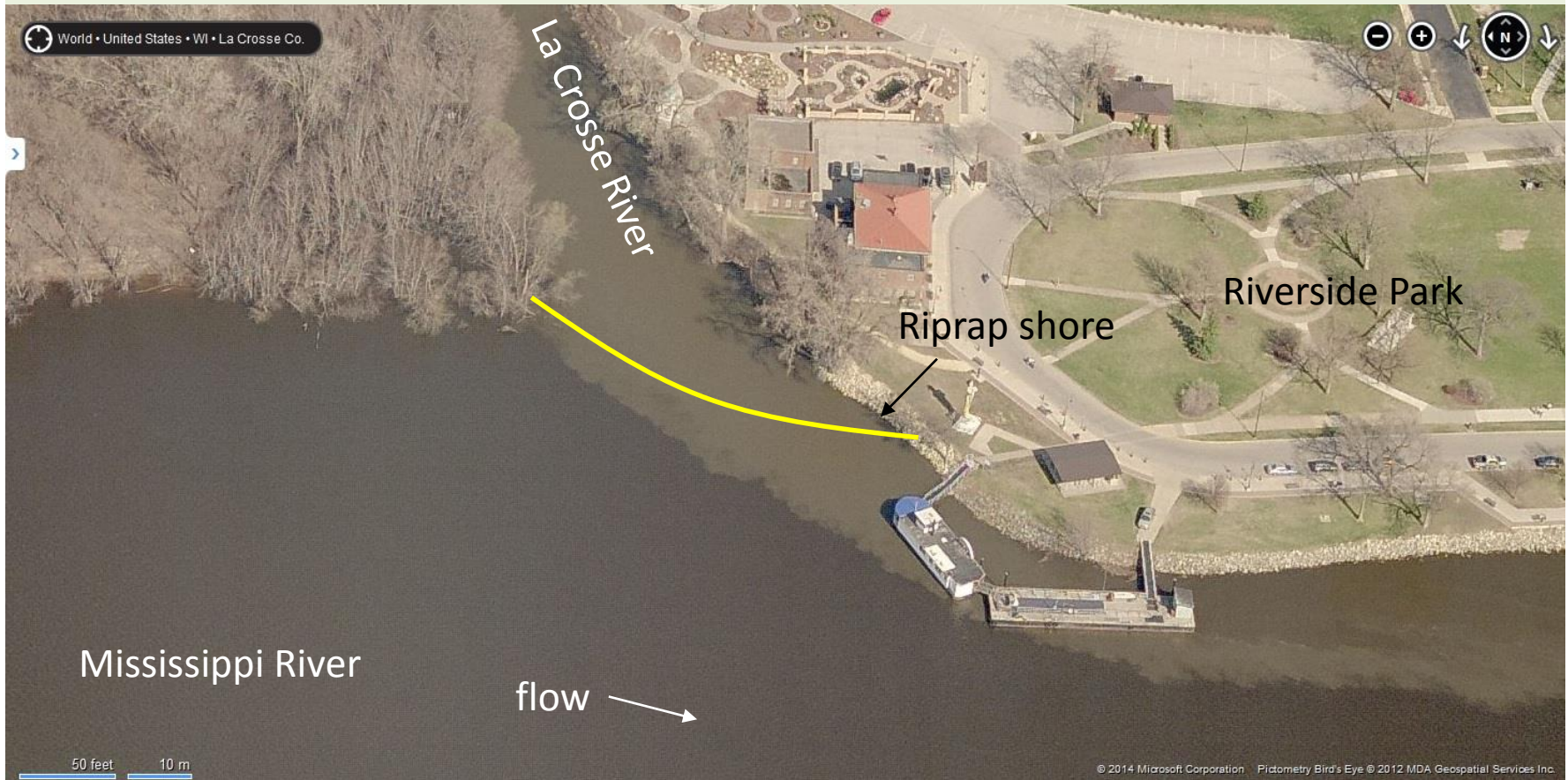
698b – South Bay Marina

Goal: Collect spilled product in West Channel to protect downstream resources



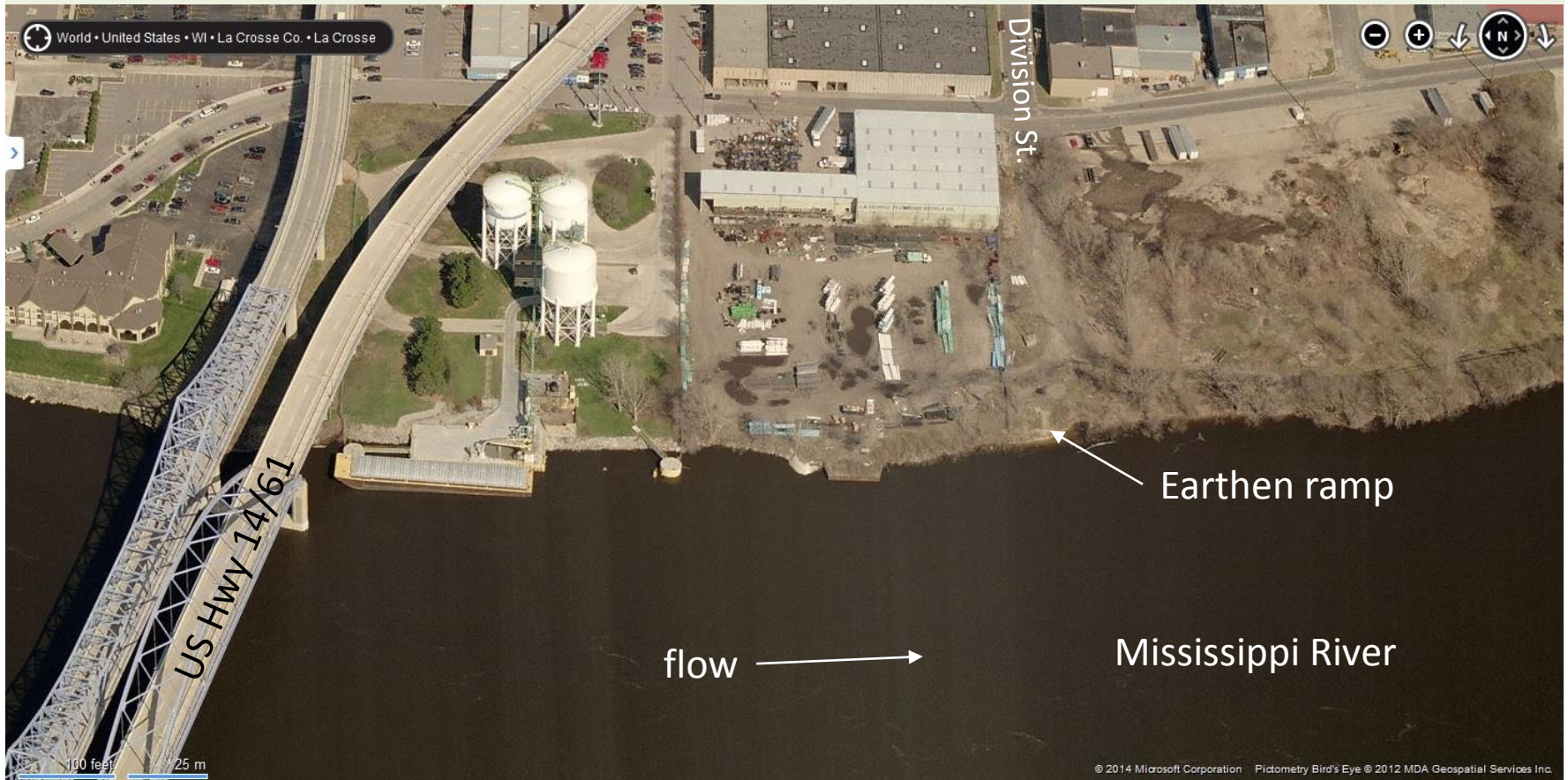
698d – La Crosse River Mouth

Goal: Collect product spilled on La Crosse River to keep from entering Mississippi River



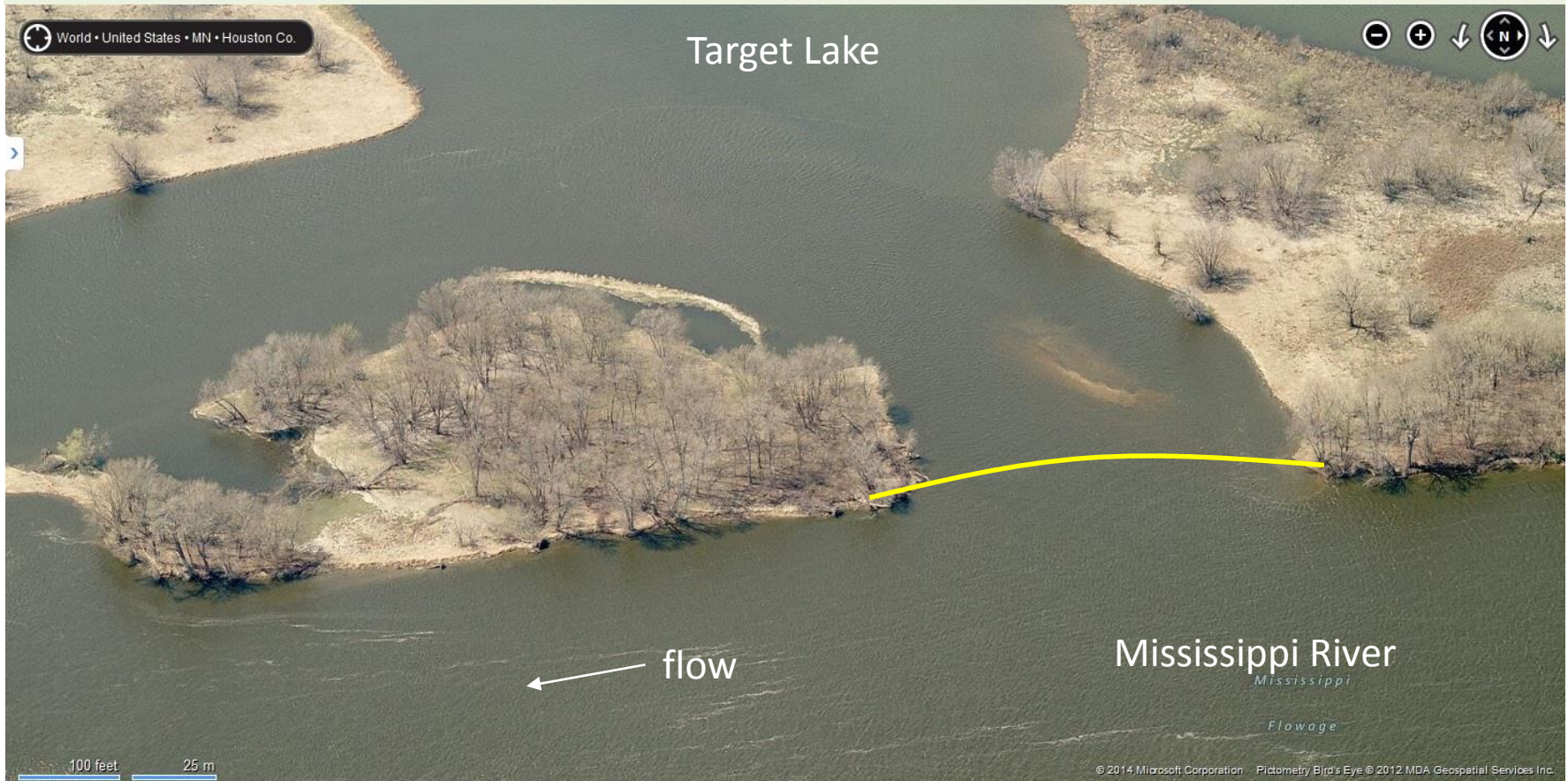
697a

Goal: River access for spill response



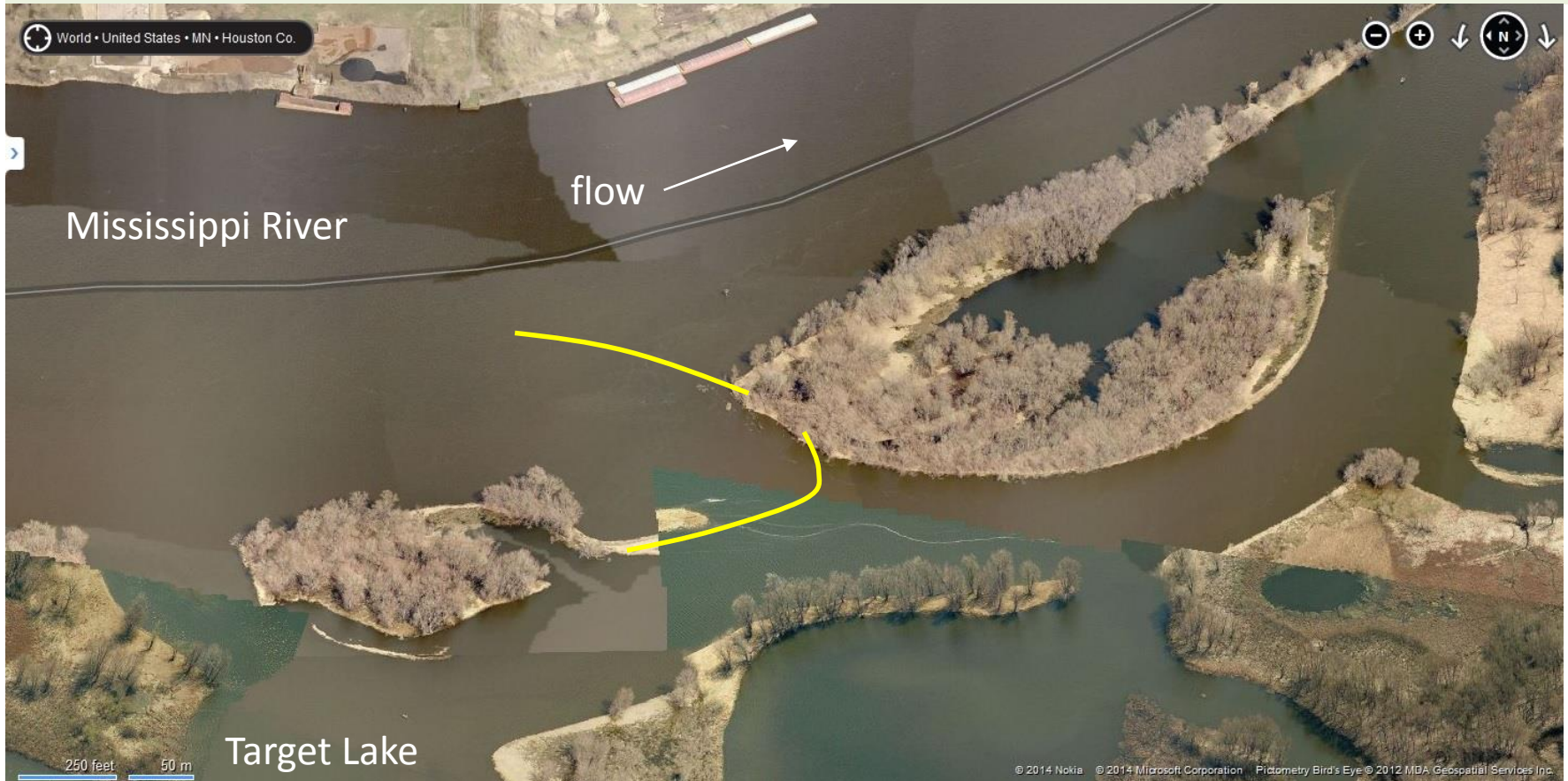
696c – Target Lake

Goal: Exclude spilled product to protect sensitive Target Lake backwaters



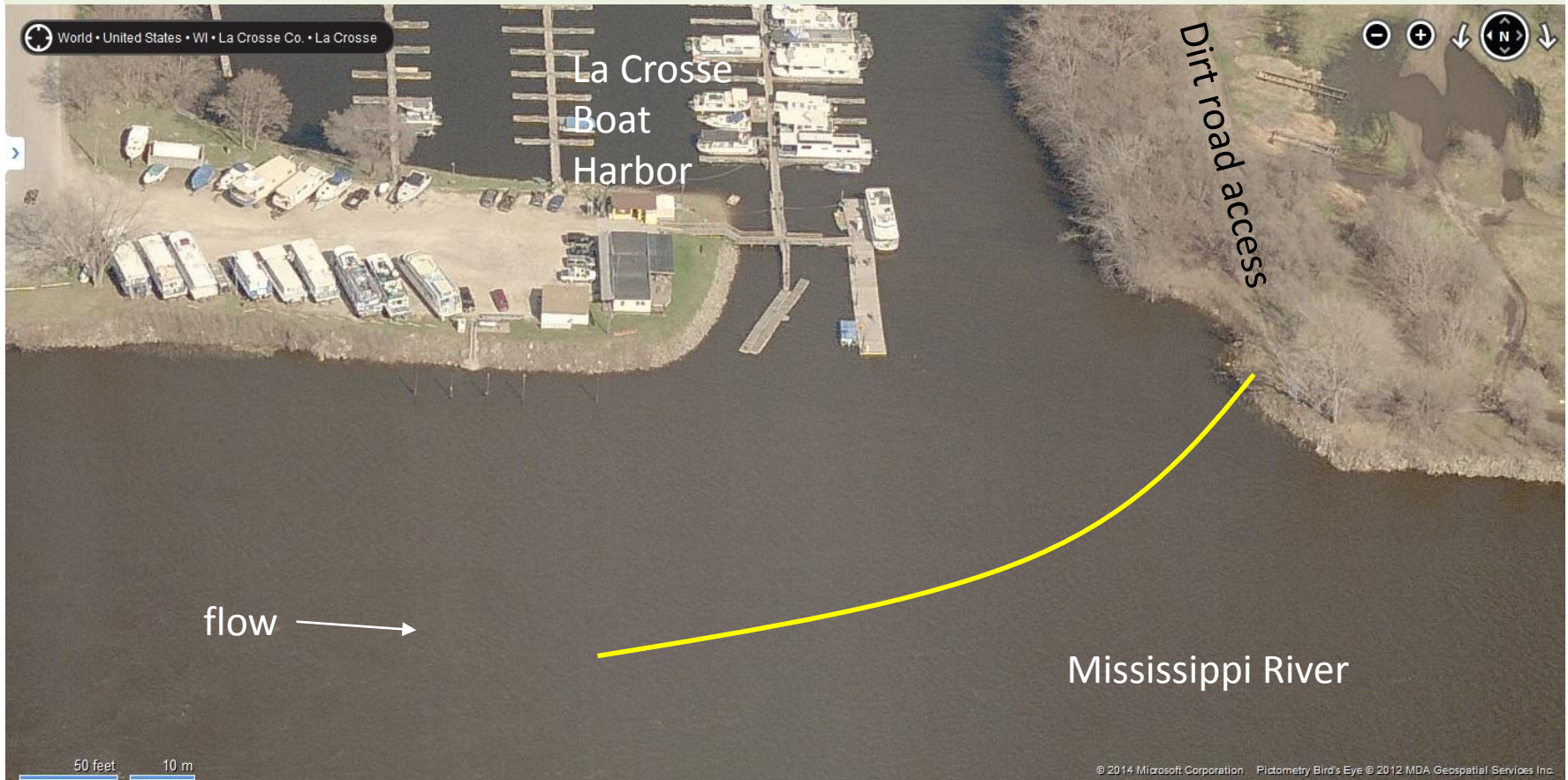
696d – Broken Arrow Slough

Goal: Exclude spilled product to protect sensitive Target Lake backwaters



696a – La Crosse Boat Harbor

Goal: Contain and collect spilled product to protect sensitive middle pool backwaters



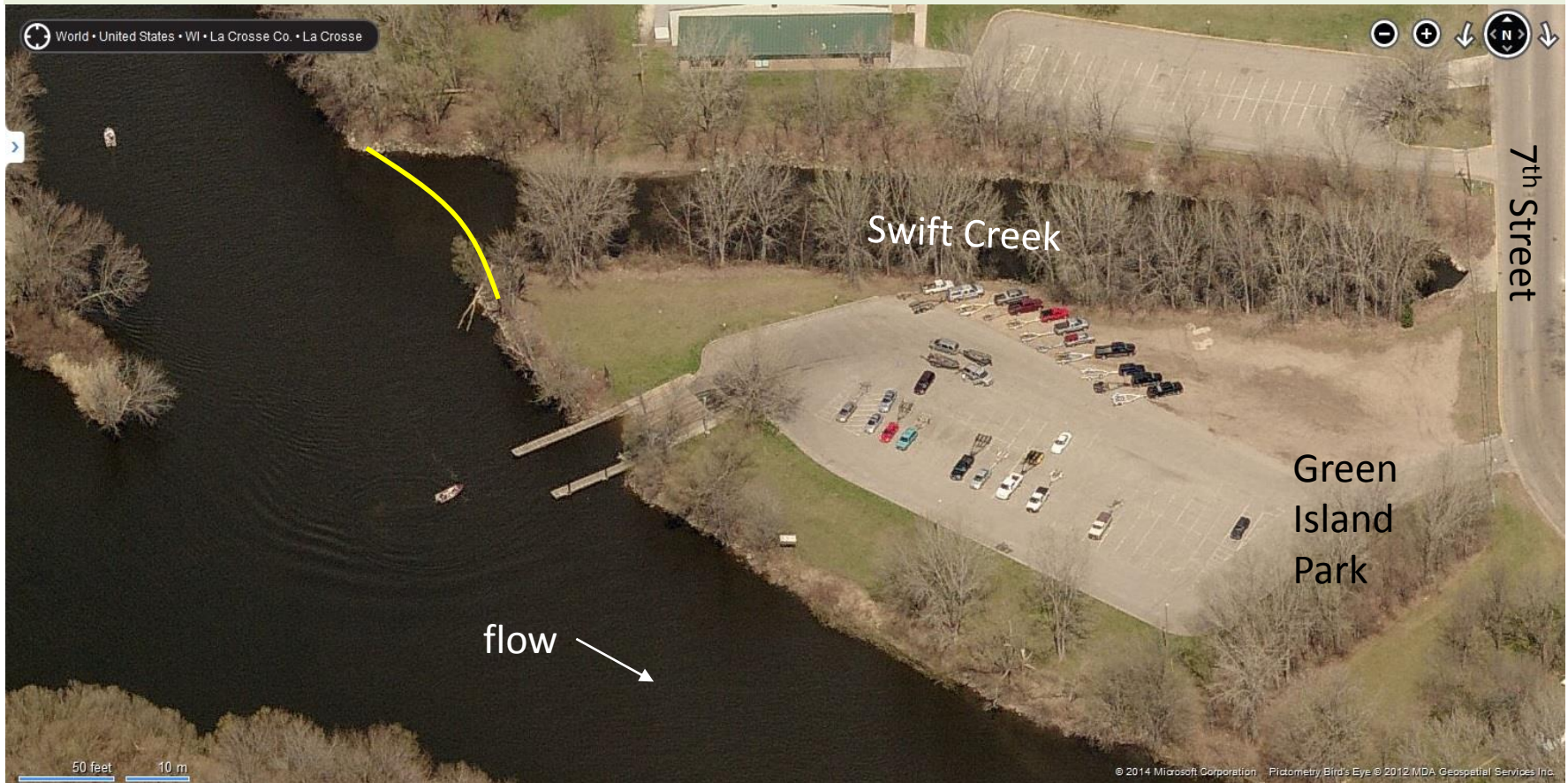
696b

Goal: Divert spilled product to MN shore to protect sensitive middle pool backwaters



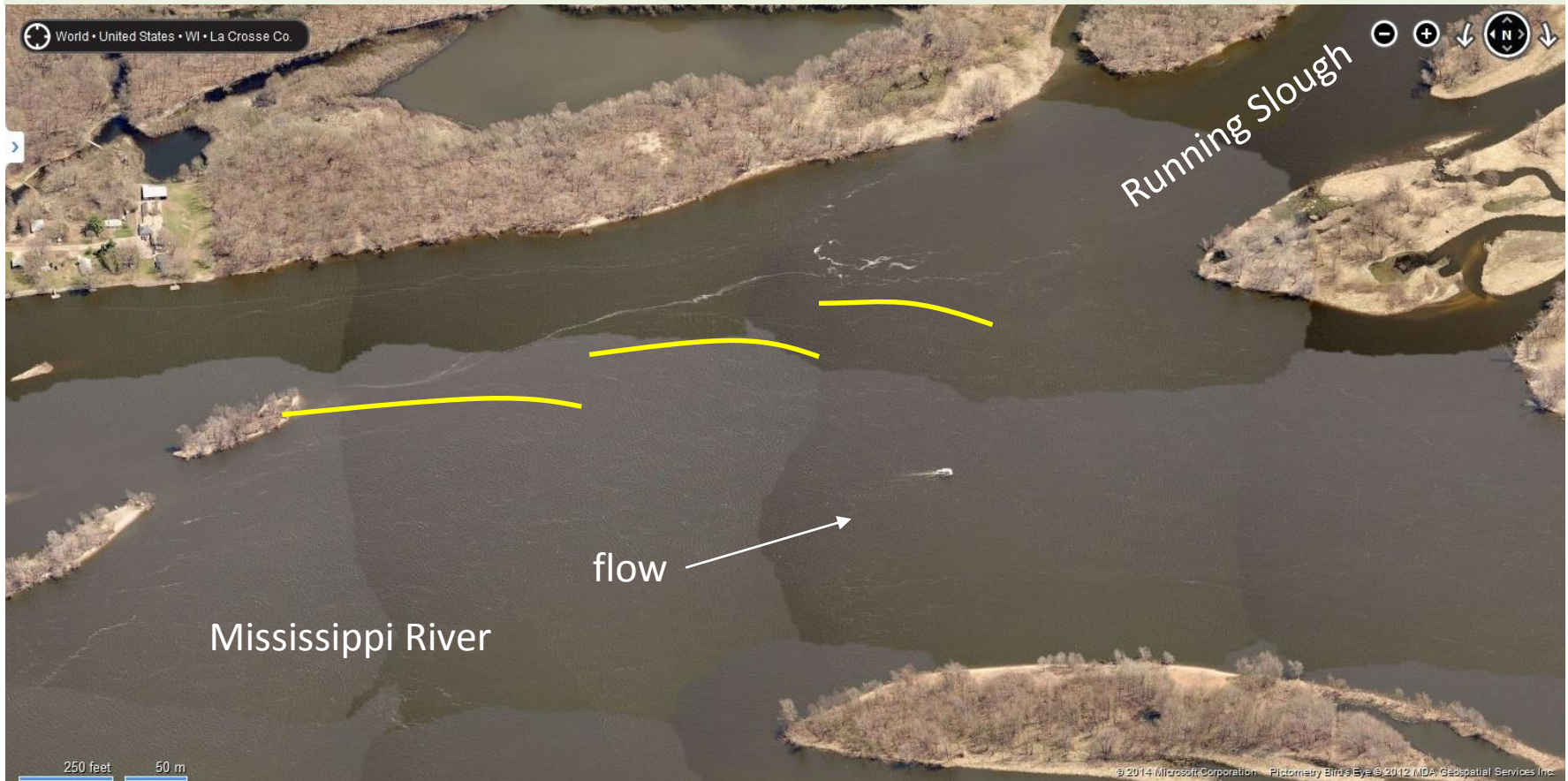
695a – Green Island Park

Goal: Prevent spilled product from entering Swift Creek backwaters



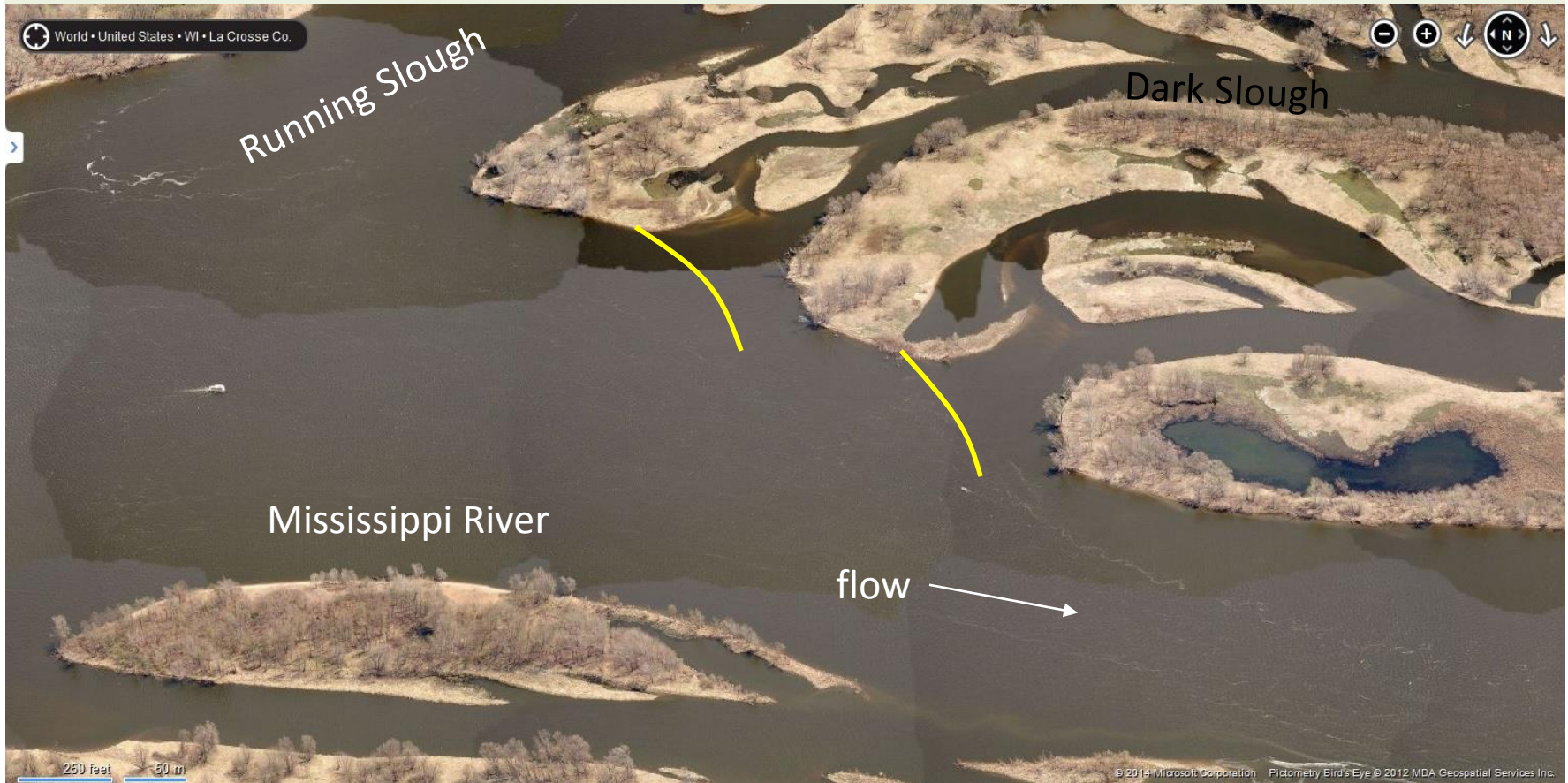
694a

Goal: Boom to divert oil toward MN shore to protect sensitive middle pool backwaters



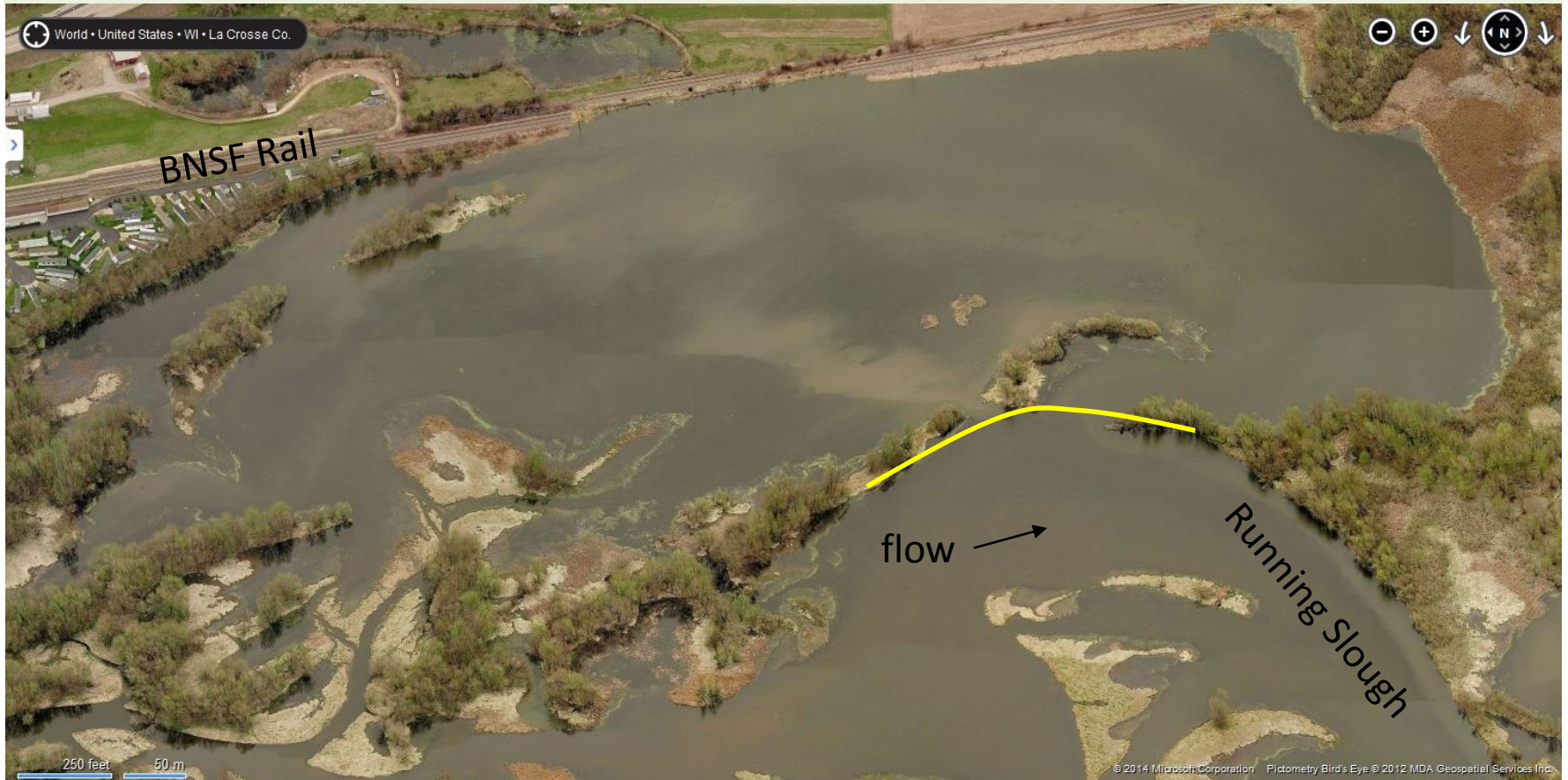
694b and 694c

Goal: Keep spilled product from entering Dark Slough and sensitive backwaters



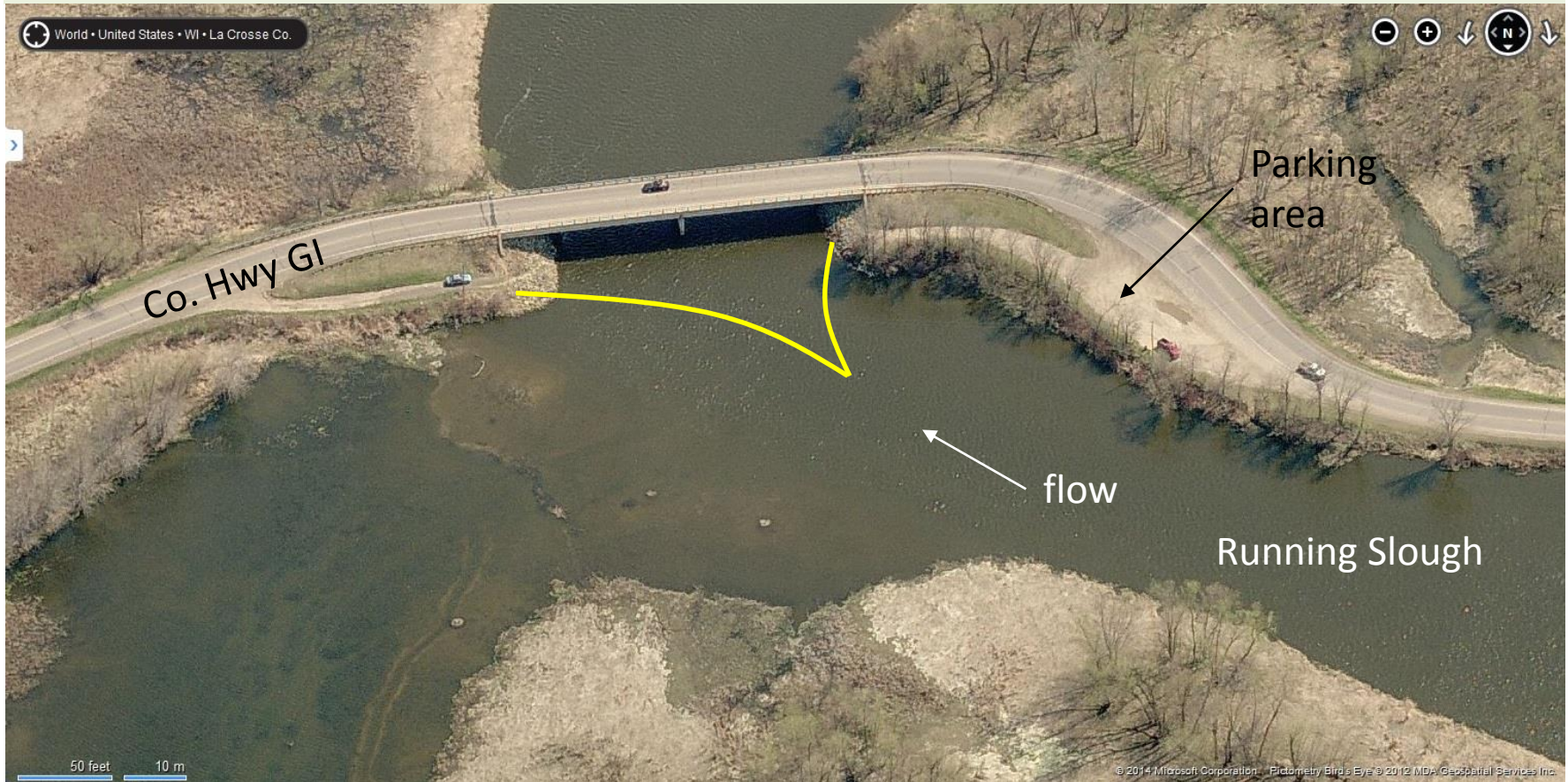
693a – La Crosse Marshes

Goal: Boom to keep spilled product from spreading into Running Slough



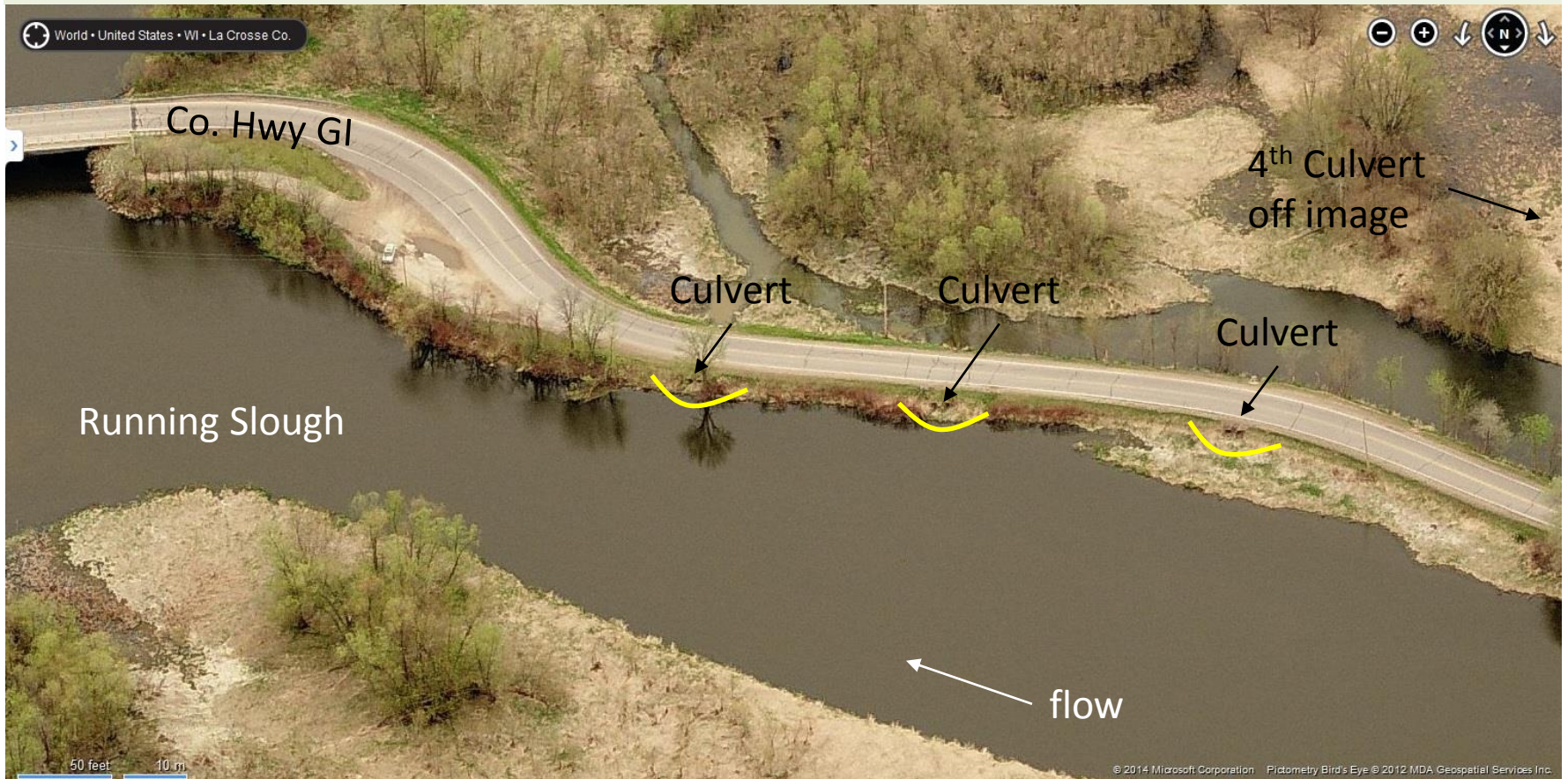
691a – Running Slough

Goal: Prevent spilled product from passing under road to Goose Island No-Hunting Zone



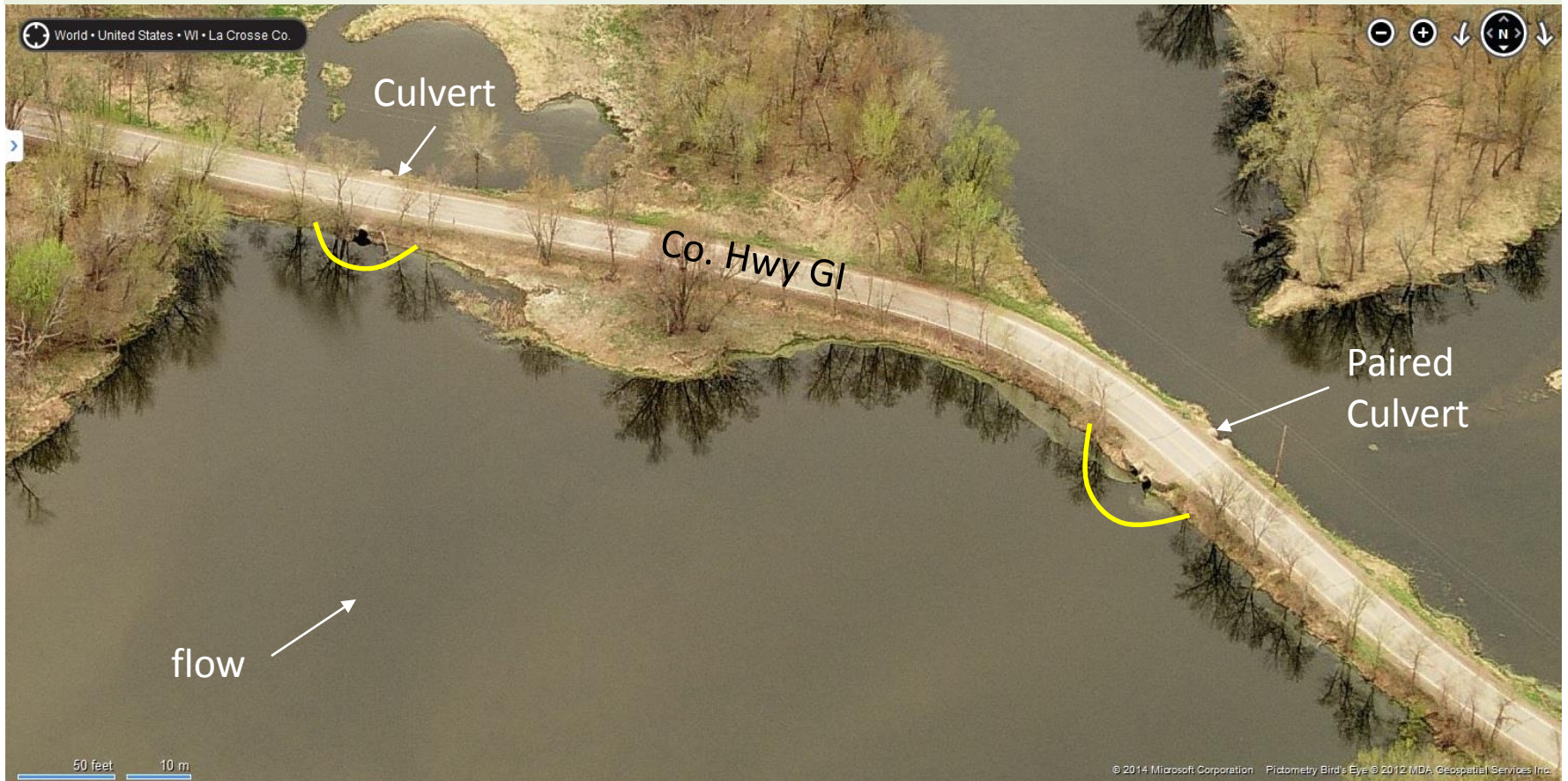
691c – Co. Highway GI Culverts

Goal: Prevent spilled product from passing under road to Goose Island No-Hunting Zone



691d – Goose Island Culverts

Goal: Prevent spilled product from passing under road to Goose Island No-Hunting Zone



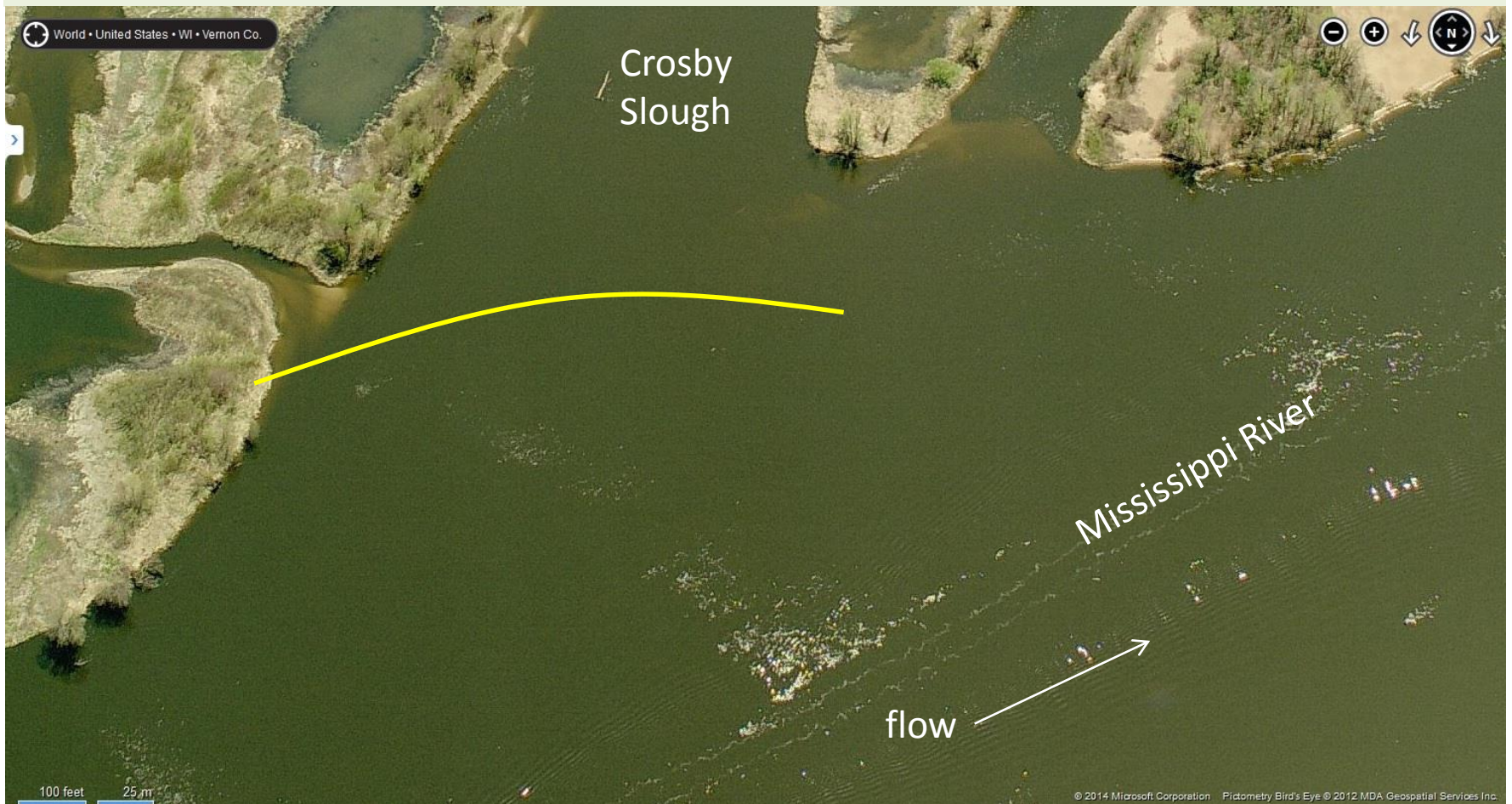
691b – BNSF Overflow Pond

Goal: Divert product spilled into Goose Island No-Hunting Zone to overflow pond



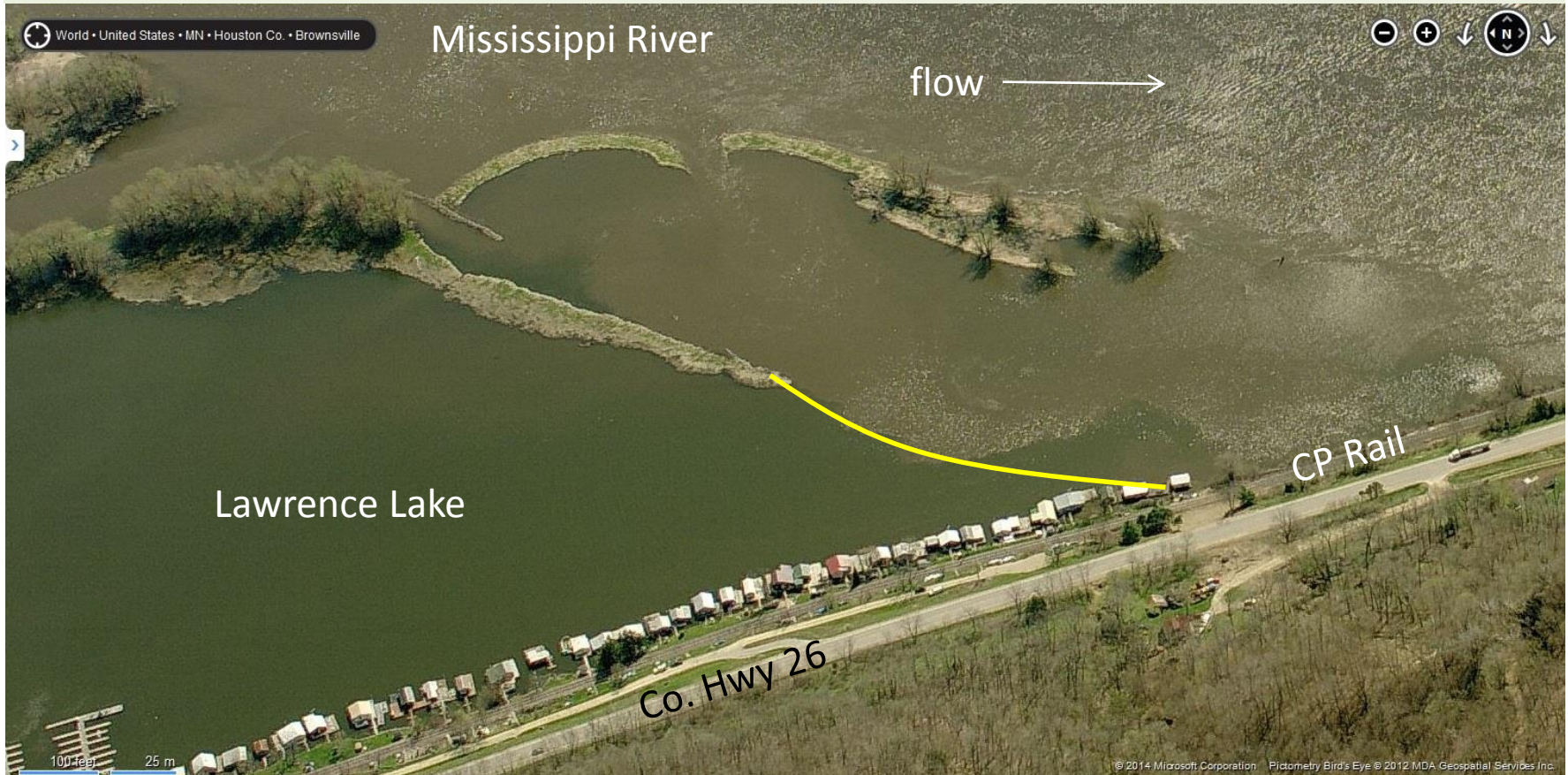
690a – Crosby Slough

Goal: Keep spilled product from entering Crosby Slough



690b – Lawrence Lake

Goal: Boom across opening to prevent spilled product from entering Lawrence Lake



689a

Goal: Collect spilled product to protect sensitive downstream resources



688a

Goal: Boom across slough openings to protect sensitive habitats



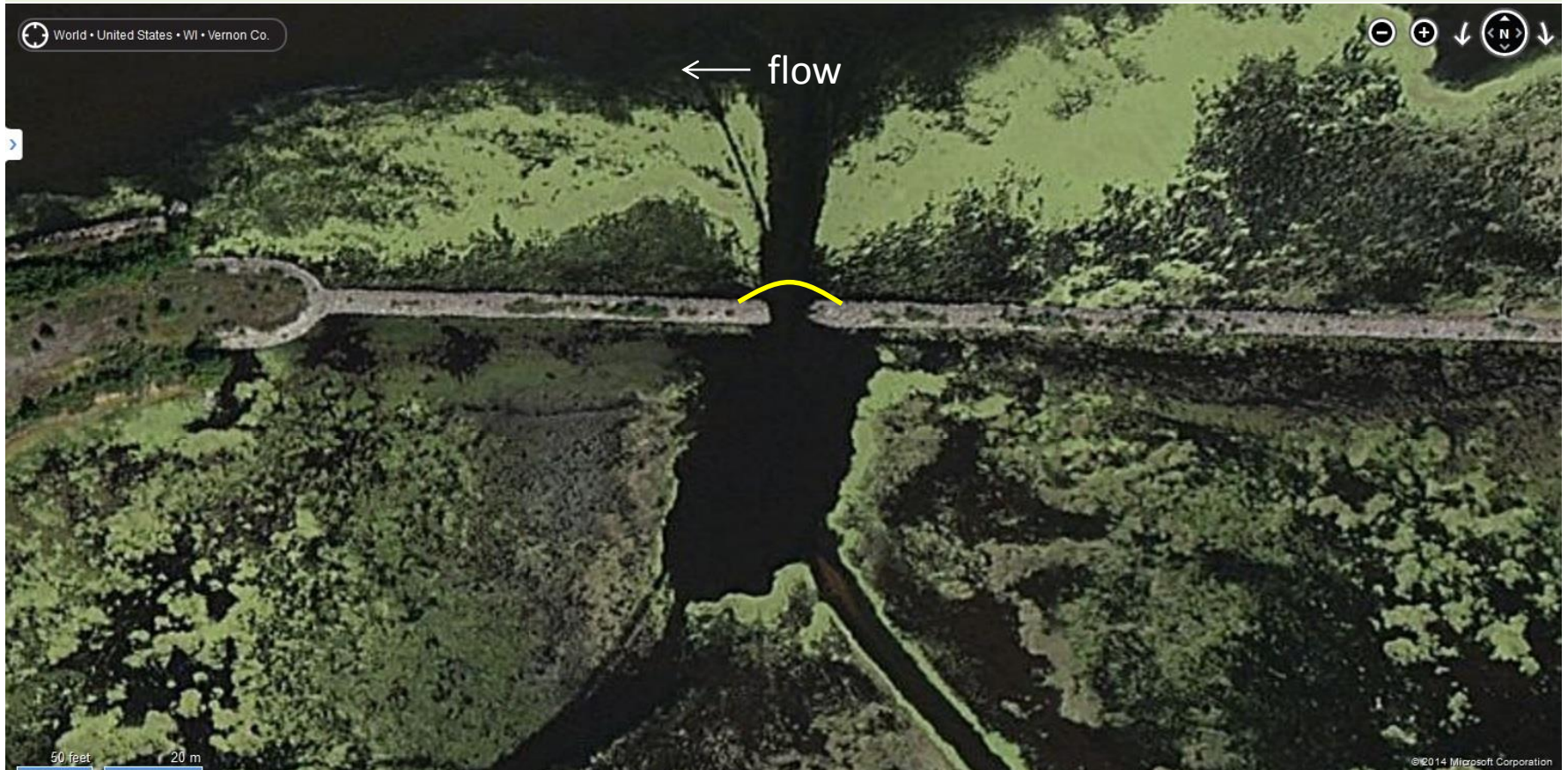
688b - Wildcat Landing

Brownsville, MN – Best access and staging for lower Pool 8



686a – Eagle Island

Goal: Boom across notch in dam to keep spilled product out of Eagle Island backwaters



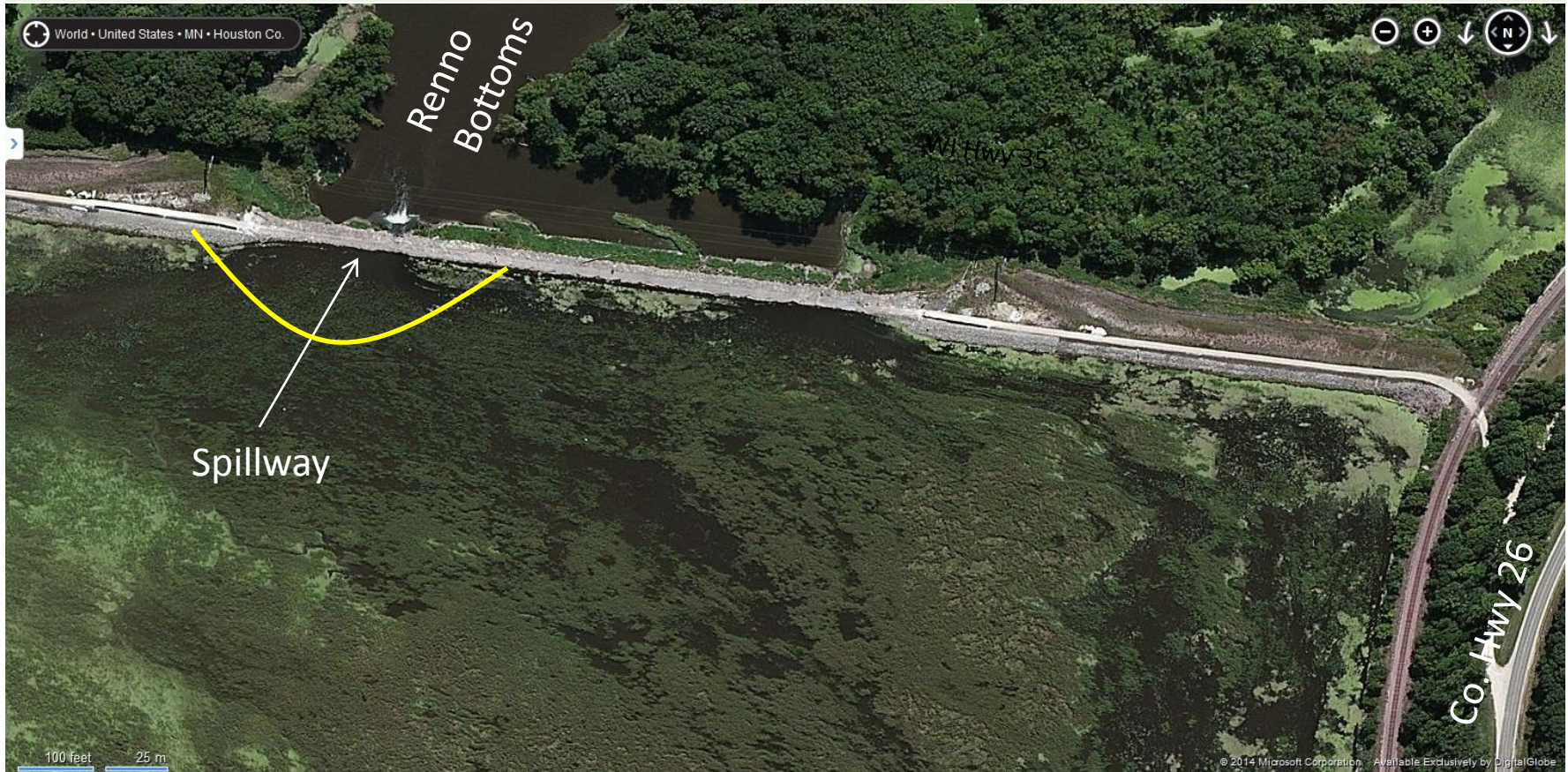
685a – Stoddard, WI

Goal: Contain and collect spilled product to prevent its spread into the Refuge



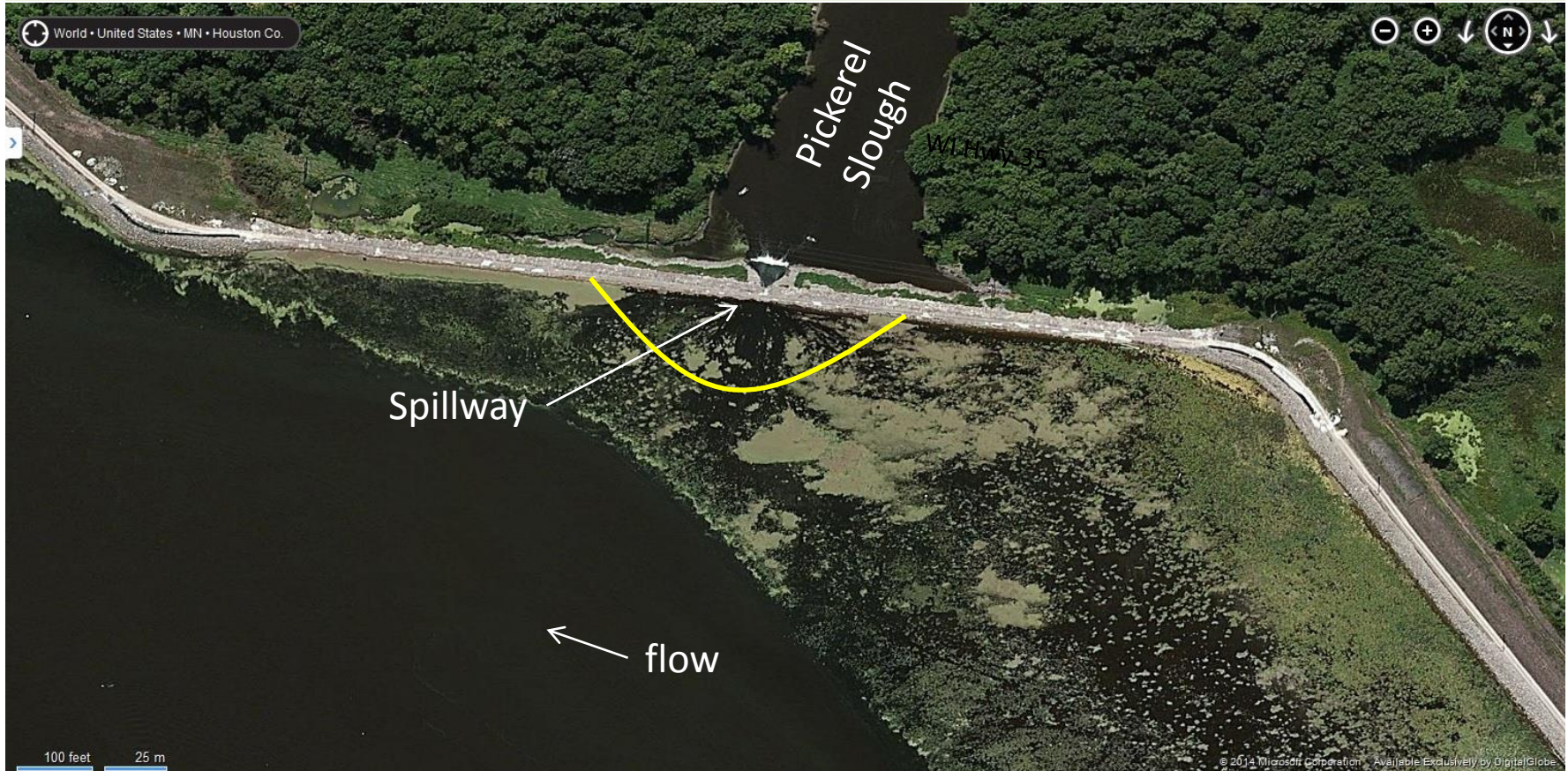
681a - Dam 8 (Renno)

Goal: Boom across spillway to keep spilled product from entering Pool 9 backwaters



680a - Dam 8 (Pickerel)

Goal: Boom spillway to keep spilled product from entering Pickerel Slough in Pool 9



679a - Lock and Dam 8

Goal: Collect spilled product above dam to protect downstream resources

