

**GOAL: Collect spilled product to protect sensitive downstream resources**

Site Number	Waterbody, River Mile	Site Name	
753a	Mississippi River 753.0 LDB	Lock and Dam 4	
Strategy Type*	Boom Length	Land Access	Boat Access
C&C	2000	Y	N
Strategy Implementation ( <a href="#">Go to aerial view</a> )			
Divert product from spillway and collect above L&D 4. Close water control structure in low-flow; boom needed in high flow, anchor to fence or riprap. Note mussel bed and fish habitat in dam tailwaters.			
Site Access			
From US Hwy 61 just N of Zumbro River and Kellogg, go east and north .6 mi. on Co. Rd. 30, then east 2.2 mi. on Co. Rd. 24, then south .3 mi. on 140th Ave., then east along dam access road.			
Latitude: 44.32445 UTM Y: 4908471.307		Longitude: -91.92511 UTM X: 585707.436	



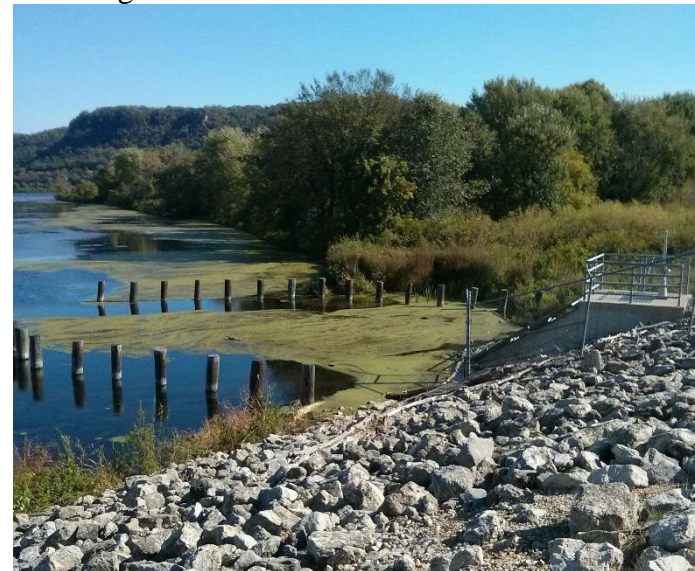
Dam 4 lock chamber

**GOAL: Keep spilled product from passing through culverts toward sensitive backwaters**

Site Number	Waterbody, River Mile	Site Name	
753b	Mississippi River 753.0 RDB	Dam 4 Culverts	
Strategy Type*	Boom Length	Land Access	Boat Access
Exc.	200	Y	N
Strategy Implementation ( <a href="#">Go to aerial view</a> )			
MN DNR public access south of road allows walk-in access. Protect or close 4 hand-crank gate culverts to 1st, 2nd, and 3rd Finger, Lower Peterson, and Clear Lakes. Use 50 ft. boom to protect openings. Fourth culvert has 2 crank gates on south side of road.			
Site Access			
From US Hwy 61 just north of Zumbro River and Kellogg, go east and north .6 mi. on Co. Rd. 30, then east 2.2 mi. on Co. Rd. 24, then .2 mi east on 652nd St., then south .3 mi. on 140th Ave., then east along dam access road. Private owner at road must grant access.			
Latitude: 44.323293 UTM Y: 4908330.506		Longitude: -91.937165 UTM X: 584747.91	



Locked gate at dam access road



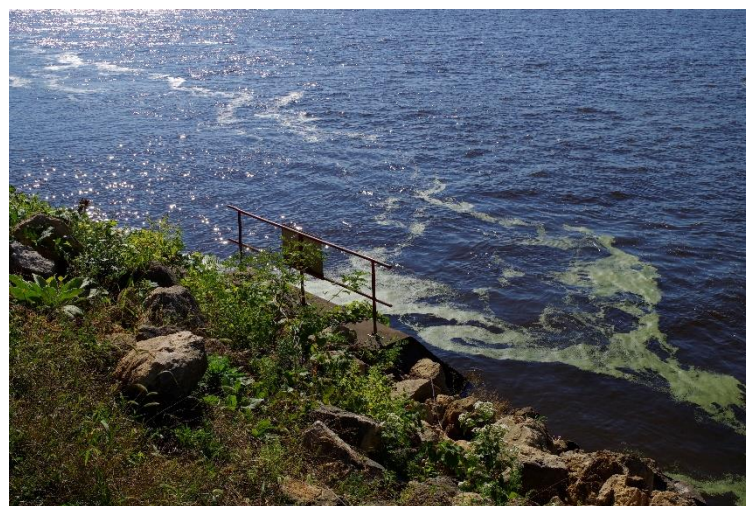
View of 3<sup>rd</sup> culvert

**GOAL: Notify facility of spill and assist with protection of water intakes if requested**

Site Number	Waterbody, River Mile	Site Name	
751a	Mississippi River 751.6 LDB	Dairyland Power	
Strategy Type*	Boom Length	Land Access	Boat Access
Exc.	100	Y	Y
Strategy Implementation ( <a href="#">Go to aerial view</a> )			
<p>Notify facility of spill. Protect 2 water intakes if requested. Limited spill response equipment onsite. Contact Larry Stenzel, Site Safety Manager 608-685-6624. Peregrine falcons and bald eagles often present in area.</p>			
Site Access			
<p>500 Old State Hwy 35, 1 mi. south of Lock &amp; Dam 4. Good paved boat ramp and staging area at boat access just upstream of power plants.</p>			
<p><b>Latitude:</b> 44.309083 <b>UTM Y:</b> 4906778.679</p>		<p><b>Longitude:</b> -91.911822 <b>UTM X:</b> 586789.647</p>	



Dairyland Power water intake facility



Facility outfall



**GOAL: Keep spill on Zumbro River from spreading into important backwater habitats**

Site Number	Waterbody, River Mile	Site Name	
751b	Zumbro River N/A	Finger Lakes Inflow	
Strategy Type*	Boom Length	Land Access	Boat Access
Exc.	100-500	N	N
Strategy Implementation ( <a href="#">Go to aerial view</a> )			
<p>Boom across opening or exclude from oxbow to keep spilled product from spreading into backwater complex. Not needed unless Zumbro River is in flood stage. Important fish, songbird, and mammal habitat.</p>			
Site Access			
<p>Oxbow old channel of Zumbro River, 1.5 mi. upstream of the Mississippi River. Access area through private property. High-flow opening during high water on NE side of backwater.</p>			
<b>Latitude:</b> 44.303757 <b>UTM Y:</b> 4906158.711		<b>Longitude:</b> -91.938956 <b>UTM X:</b> 584633.166	



***GOAL: Keep spilled product in main channel to protect mussel bed in Chute***

Site Number	Waterbody, River Mile	Site Name	
750	Mississippi River 750.0 RDB	West Newton Chute	
Strategy Type*	Boom Length	Land Access	Boat Access
Exc.	1000-2000	Y	Y
Strategy Implementation ( <a href="#">Go to aerial view</a> )			
Chute opening 500 ft. wide. Use barge or boom to keep spill in main channel. -OR- Eddy on west shore may be useful to deflect oil to ramp for collection. Flow too strong in high water. Protect mussel bed in upper chute.			
Site Access			
From US Hwy 61 just south of Kellogg, go northeast .25 mi. on Co. Rd. 18, then east and south 4 mi. on Co. Rd. 84, then east on 622nd St. to access.			
Latitude: 44.284117 UTM Y: 4903989.856		Longitude: -91.926817 UTM X: 585629.938	

***GOAL: Keep spilled product in main channel to protect habitat in West Newton Chute***

Site Number	Waterbody, River Mile	Site Name	
749a	Mississippi River 749.7 RDB	749a	
Strategy Type*	Boom Length	Land Access	Boat Access
<b>Div.</b>	500-1000	N	N
<b>Strategy Implementation (<a href="#">Go to aerial view</a>)</b>			
Exclude spill from slough to keep product in main channel and protect West Newton Chute. Deep water should allow positioning of a barge. -OR- Divert spill into slough and West Newton Chute for collection at strategy <a href="#">747b</a> . Bald eagles use open water in winter.			
<b>Site Access</b>			
Slough along Island 42 from main channel to West Newton Chute. Reach by boat from West Newton Chute ramp .4 mi. west at RSP <a href="#">750</a> .			
<b>Latitude:</b> 44.28369 <b>UTM Y:</b> 4903948.972		<b>Longitude:</b> -91.920366 <b>UTM X:</b> 586145.367	

***GOAL: Close culvert to keep spilled product from spreading into Island 42 waterfowl habitat***

Site Number	Waterbody, River Mile	Site Name	
749b	Mississippi River 749.5 RDB	Island 42 North	
Strategy Type*	Boom Length	Land Access	Boat Access
Exc.	50	N	N
Strategy Implementation ( <a href="#">Go to aerial view</a> )			
Use water control structures to keep spilled product from entering sensitive Island 42 backwaters. Structures are currently not functional and are closed/blocked (2015).			
Site Access			
Culvert on upper north shore of Island 42. Reach by boat from West Newton Chute ramp .6 mi. west at strategy <a href="#">750</a> .			
Latitude: 44.283299 UTM Y: 4903910.848		Longitude: -91.915543 UTM X: 586530.745	



***GOAL: Keep spill within railroad loop from spreading into Mississippi River***

Site Number	Waterbody, River Mile	Site Name	
749c	Mississippi River 749.3 LDB	Dairyland Power RR Loop	
Strategy Type*	Boom Length	Land Access	Boat Access
Exc.	50	Y	N
Strategy Implementation ( <a href="#">Go to aerial view</a> )			
Wide lower culvert opens to river backwaters. Boom across opening to keep spill within rail loop from spreading to the river. Peregrine falcons and bald eagles often present in area.			
Site Access			
At southwest part of rail loop. Land access only along railroad (no road to culvert), contact facility for access. Boat access to river side of ballast from Great River Harbor Marina, 2 mi. downstream on LDB.			
Latitude: 44.290176 UTM Y: 4904682.193		Longitude: -91.908411 UTM X: 587089.612	

***GOAL: Prevent spilled product from spreading into Island 42 waterfowl habitat***

Site Number	Waterbody, River Mile	Site Name	
749d	Mississippi River 748.8	Island 42 West	
Strategy Type*	Boom Length	Land Access	Boat Access
<b>Exc.</b>	100	N	N
<b>Strategy Implementation (<a href="#">Go to aerial view</a>)</b>			
Close off channel entrance with rock protection as part of HREP maintenance. Deploy boom across channel. Anchor to trees on either side.			
<b>Site Access</b>			
Small opening on west side of Island 42, 1000 ft. below main channel. Reach by boat from West Newton Chute ramp .6 mi. west at strategy <a href="#">750</a> .			
<b>Latitude:</b> 44.279863 <b>UTM Y:</b> 4903526.964		<b>Longitude:</b> -91.917649 <b>UTM X:</b> 586367.727	

***GOAL: Keep spilled product from spreading into important fish spawning habitat***

Site Number	Waterbody, River Mile	Site Name	
748a	Mississippi River 748.8 LDB	748a	
Strategy Type*	Boom Length	Land Access	Boat Access
Exc.	400	N	N
Strategy Implementation ( <a href="#">Go to aerial view</a> )			
During high water conditions, exclude spilled product from backwater area using boom. Key fish overwintering area. Anchor to trees on either side of opening.			
Site Access			
Opening to backwaters south of Dairyland Power. Reach by boat from Great River Harbor Marina, 1.5 mi. downstream on LDB.			
Latitude: 44.282988 UTM Y: 4903889.157		Longitude: -91.903408 UTM X: 587499.439	



***GOAL: Collect spilled product to protect sensitive downstream fish and raptor habitats***

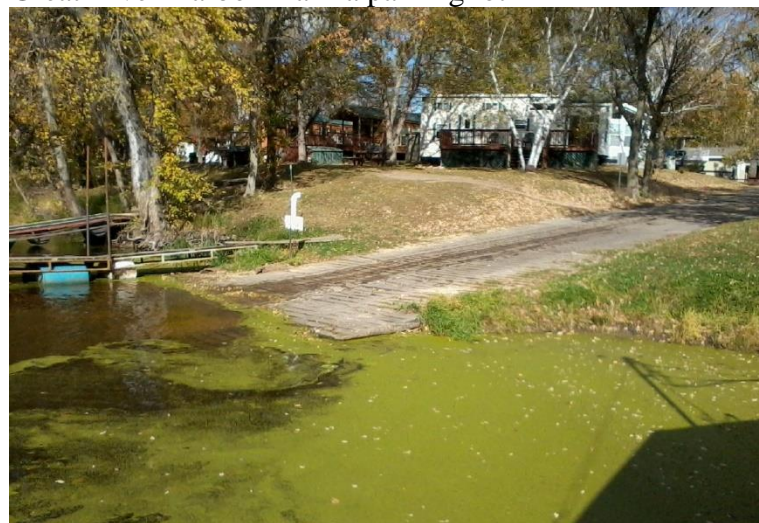
Site Number	Waterbody, River Mile	Site Name	
748b	Mississippi River 748.3 RDB	West Newton Placement Site	
Strategy Type*	Boom Length	Land Access	Boat Access
C&C	1000	N	N
Strategy Implementation ( <a href="#">Go to aerial view</a> )			
<p>Boom to contain spilled product from main channel. Anchor to trees on lower side of opening. Collect from barge. Opening less than 100 ft. wide in moderate flow. Contact USACE 651-290-5807 for current status.</p>			
Site Access			
<p>West Newton placement site. Use as collection site depending on fill. Reach by boat from Great River Harbor Marina, 1 mi. east on LDB, or Bellvidere boat landing, 1.3 mi. downstream on LDB.</p>			
<b>Latitude:</b> 44.274509 <b>UTM Y:</b> 4902952.399		<b>Longitude:</b> -91.898741 <b>UTM X:</b> 587884.476	

**GOAL: Use Marina for staging equipment and responding to spill in Pool 5**

Site Number	Waterbody, River Mile	Site Name	
747a	Mississippi River 747.9 LDB	Great River Harbor Marina	
Strategy Type*	Boom Length	Land Access	Boat Access
Other	0	Y	Y
Strategy Implementation ( <a href="#">Go to aerial view</a> )			
Concrete ramp. Open May-October. Good access, moderate staging area. Too far off main channel to collect at site.			
Site Access			
S2221 WI Hwy 35, Alma, WI. Off-channel in backwater, at marker 747.9 LDB. RR track crossing off highway.			
Latitude: 44.272573 UTM Y: 4902754.769		Longitude: -91.882588 UTM X: 589176.497	



Great River Harbor Marina parking lot



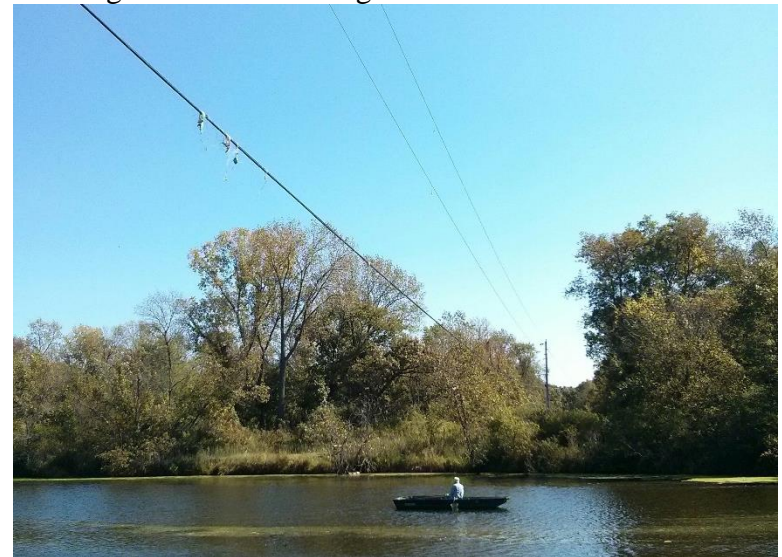
Great River Harbor Marina ramp

**GOAL: Close culverts to keep spilled product from spreading into Weaver Bottoms**

Site Number	Waterbody, River Mile	Site Name	
747b	Mississippi River 747.8 RDB	Halfmoon Landing	
Strategy Type*	Boom Length	Land Access	Boat Access
Exc.	100	Y	Y
Strategy Implementation ( <a href="#">Go to aerial view</a> )			
Close four culverts under road to keep product from moving from West Newton Chute into Halfmoon Lake and Weaver Bottoms. May serve as collection site if strategy <a href="#">749a</a> used to divert oil into side channels. Note powerlines near boat ramp.			
Site Access			
Five mi. southeast of Kellogg, off Co. Rd. 84/West Newton Rd., on Half-Moon Lake. Boat ramp just below causeway.			
Latitude: 44.265668 UTM Y: 4901961.093		Longitude: -91.907392 UTM X: 587207.235	



Looking north from landing to road and culverts



For safety, note power lines overhead at boat ramp



***GOAL: Prevent spilled product from entering  
Cut and spreading into Weaver Bottoms***

Site Number	Waterbody, River Mile	Site Name	
747c	Mississippi River 747.5 RDB	Murphy's Cut	
Strategy Type*	Boom Length	Land Access	Boat Access
Exc.	400	Y	N
Strategy Implementation ( <a href="#">Go to aerial view</a> )			
High priority site. Boom across opening to exclude oil from entering Weaver Bottoms inflow, attach boom to rocks on shore. May need 2nd boom inside slough. Blandings turtle habitat, private residences along shore.			
Site Access			
Murphy's Cut, 5.5 mi. southeast of Kellogg, off Co. Rd. 84/West Newton Rd. Reach by boat from Great River Harbor Marina, 1.3 mi. north and east on LDB. Access also at channel entrance with permission from West Newton Colony property owners.			
Latitude: 44.26222 UTM Y: 4901587.47		Longitude: -91.898588 UTM X: 587915.211	

***GOAL: Prevent spilled product from spreading into sensitive fish and raptor habitat***

Site Number	Waterbody, River Mile	Site Name	
746a	Mississippi River 746.9 RDB	Krueger Slough	
Strategy Type*	Boom Length	Land Access	Boat Access
Exc.	300	N	Y
Strategy Implementation ( <a href="#">Go to aerial view</a> )			
Boom across opening to keep spilled product from spreading into Fisher Island backwaters. Private residences along shore at opening. Attach boom to breakwater or dock (private property - Jeff Graner, request MN DNR to contact owner).			
Site Access			
Fisher Island opening. Reach by boat from Bellvidere boat landing through Roebucks Run or from private boat access in West Newton Colony, .5 mile upstream.			
Latitude: 44.25662 UTM Y: 4900972.421		Longitude: -91.892052 UTM X: 588445.149	

**GOAL: Use landing for staging equipment and responding to spill in Pool 5**

Site Number	Waterbody, River Mile	Site Name	
746b	Mississippi River 746.8 LDB	Belvidere Slough	
Strategy Type*	Boom Length	Land Access	Boat Access
Other	0	Y	Y
Strategy Implementation ( <a href="#">Go to aerial view</a> )			
Good staging and deep access. Can be used as collection site if spilled product enters Belvidere Slough, but flow normally too strong along shore.			
Site Access			
Co. Rd. OO, Town of Belvidere, WI. Reach via WI Hwy 35.			
Latitude: 44.260959 UTM Y: 4901468.402		Longitude: -91.879155 UTM X: 589468.082	



Parking lot at Belvedere Slough landing



Belvedere Slough ramp



**GOAL: Prevent spilled product from moving from main channel into Belvedere Slough**

Site Number	Waterbody, River Mile	Site Name	
746c	Mississippi River 746.5	Roebucks Run	
Strategy Type*	Boom Length	Land Access	Boat Access
Exc.	800	N	N
Strategy Implementation ( <a href="#">Go to aerial view</a> )			
Wing dams, use caution off main channel, current below marker much slower. Boom from marker riprap to S shore, wing dam breaks current. Boom from north shore to marker riprap, cascade in sections to push oil beyond marker. High flow entrance into slough.			
Site Access			
Roebucks Run, connecting main channel to Belvedere Slough. Reach from Belvedere Slough Landing, .6 mi. upstream.			
Latitude: 44.254441 UTM Y: 4900738.241		Longitude: -91.884896 UTM X: 589019.702	



Marker in middle of opening



Upper shore of opening

**GOAL: Collect spilled product to prevent spread into Weaver Bottoms**

Site Number	Waterbody, River Mile	Site Name	
745a	Mississippi River 745.8 RDB	Fisher Island Placement Site	
Strategy Type*	Boom Length	Land Access	Boat Access
C&C	1000	N	N
Strategy Implementation ( <a href="#">Go to aerial view</a> )			
Boom to contain spilled product from main channel. Floating anchor points needed in channel to divert product. Collect from barge. Opening less than 100 ft. wide in moderate flow. Contact USACE 651-290-5807 for current status. Bald eagles in area.			
Site Access			
Fisher Island placement site. Use as collection site depending on fill. Reach by boat from Belvedere Slough Landing, 1.5 mi. north and east on LDB.			
Latitude: 44.243317 UTM Y: 4899495.767		Longitude: -91.891352 UTM X: 588520.984	



Looking downstream from upper side of opening



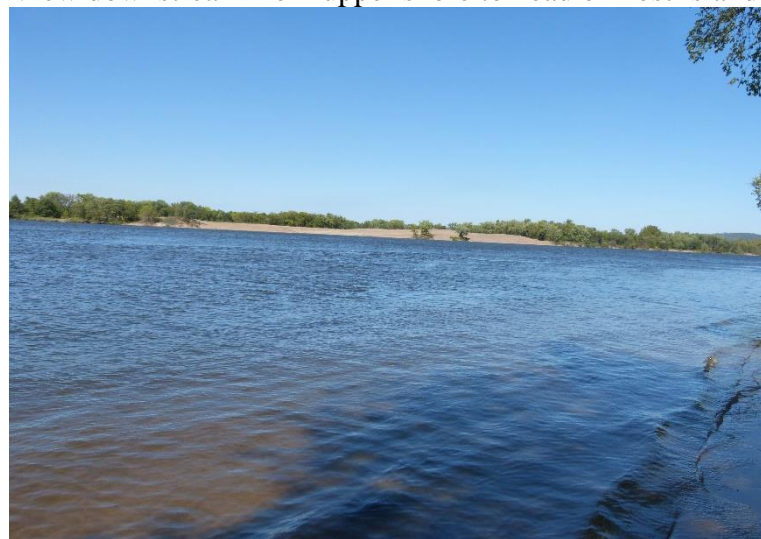
Fisher Island 'bathtub'

**GOAL: Keep spilled product in main channel to protect sensitive downstream resources**

Site Number	Waterbody, River Mile	Site Name	
745b	Mississippi River 745.7 LDB	Sand Run	
Strategy Type*	Boom Length	Land Access	Boat Access
Exc.	600	N	N
Strategy Implementation ( <a href="#">Go to aerial view</a> )			
Cascade boom to keep spilled product in main channel. Depending on wind, may use sandy banks on LDB to anchor boom. Otherwise need floating anchor points in main channel to exclude product from backwaters. Bald eagle nests near opening.			
Site Access			
Sand Run, reach by boat from Belvedere Slough Landing, 1.5 mi. N and E on LDB.			
Latitude: 44.240751 UTM Y: 4899214.433		Longitude: -91.887851 UTM X: 588804.333	



View downstream from upper shore to head of Lost Island



Looking upstream from same point toward Site 745a



***GOAL: Keep spilled product in main channel to protect sensitive habitat in Weaver Bottoms***

Site Number	Waterbody, River Mile	Site Name	
745c	Mississippi River 745.5 RDB	Weaver Bottoms	
Strategy Type*	Boom Length	Land Access	Boat Access
Exc.	1000-2000	N	N
Strategy Implementation ( <a href="#">Go to aerial view</a> )			
First priority site. Cascade boom from Fisher Island across first opening and from island to keep spill in main channel. Lay secondary boom across lower openings to ensure no oil enters Weaver Bottoms. Wind dependent placement, anchor to trees. Mussel bed and fish overwintering in openings. Bald eagles in area.			
Site Access			
Multiple openings to Weaver Bottoms, around river mile 745 RDB. Reach by boat from Belvedere Slough Landing, 2 mi. north and east on LDB. Must stop spill before small riprap lined channel on canoe trail that opens to backwater area.			
Latitude: 44.240206 UTM Y: 4899148.08		Longitude: -91.893296 UTM X: 588370.371	



Looking downstream into first opening

**GOAL: Collect product spilled into WMA before it spreads into Weaver Bottoms**

Site Number	Waterbody, River Mile	Site Name	
745d	Snake Creek N/A	McCarthy Lake WMA	
Strategy Type*	Boom Length	Land Access	Boat Access
C&C	100	Y	N
Strategy Implementation ( <a href="#">Go to aerial view</a> )			
For spill from railroad or highway into the WMA, collect spilled product from bridge to keep from spreading into Weaver Bottoms. Boom from W side to collect on E. Little space for response vehicles, may need lane closure.			
Site Access			
From Kellogg, go 5 mi. southeast on US Hwy 61, then north and east on Co. Rd. 84 to bridge over Snake Creek.			
Latitude: 44.237739 UTM Y: 4898824.496		Longitude: -91.940302 UTM X: 584620.517	



Upstream side of Co. Rd. 84 bridge over Snake Creek



Looking southeast from bridge

**GOAL: Collect spilled product to protect sensitive downstream resources**

Site Number	Waterbody, River Mile	Site Name	
744a	Mississippi River 744.8 LDB	Lost Island Placement Site	
Strategy Type*	Boom Length	Land Access	Boat Access
C&C	750-1000	N	N
Strategy Implementation ( <a href="#">Go to aerial view</a> )			
<p>Boom to contain spilled product from main channel, plenty of shore anchor points present. Several possible collection areas along sand beach. Collect from barge. Full in 2015. Contact USACE 651-290-5807 for current status. Bald eagles in area.</p>			
Site Access			
<p>Lost Island placement site. Use as collection site depending on fill. Reach by boat from Belvedere Slough Landing, 2.5 mi. north and east on LDB.</p>			
<b>Latitude:</b> 44.230017 <b>UTM Y:</b> 4898020.711		<b>Longitude:</b> -91.889174 <b>UTM X:</b> 588714.872	



Sand pile and slack water at Lost Island, 2015



**GOAL: Collect product spilled into Whitewater River before it spreads into Weaver Bottoms**

Site Number	Waterbody, River Mile	Site Name	
744b	Weaver Bottoms N/A	Swan Island	
Strategy Type*	Boom Length	Land Access	Boat Access
C&C	500-750	N	N
Strategy Implementation ( <a href="#">Go to aerial view</a> )			
Use embayment to contain spill from Whitewater River. Anchor to island, protect shore with sorbents. Collect from boat or evaluate for in-situ burn. No open water in summer, wild rice beds present. Response depends on water depth and vegetation.			
Site Access			
Swan Island within Weaver Bottoms. Reach from Weaver Bottoms Landing along US Hwy 61 or Buffalo City, 4 mi. across river on LDB. Whitewater River swift and shallow at mouth, outboard motor impractical here.			
Latitude: 44.212671 UTM Y: 4896077.189		Longitude: -91.904886 UTM X: 587485.689	



By on southwest side of Swan Island, looking east



Looking west to mouth of Whitewater River



**GOAL: Collect spilled product in slack water area to protect downstream resources**

Site Number	Waterbody, River Mile	Site Name	
742a	Mississippi River 742.7 RDB	742a	
Strategy Type*	Boom Length	Land Access	Boat Access
<b>C&amp;C</b>	2000	N	N
<b>Strategy Implementation (<a href="#">Go to aerial view</a>)</b>			
Partial closure slows flow from Weaver Bottoms. Collect spill from main channel in slack water next to RR tracks. Need hazing plan during waterfowl migration and use. South wind may push oil into Weaver Bottoms. Anchor boom to trees or on rocky shore.			
<b>Site Access</b>			
At outlet from Weaver Bottoms where main channel meets MN shore, at Minneiska Daybeacon and Rail Mile 324.8, ten miles northwest of Winona. Non-sensitive riprap shore on RDB. Reach by boat from Lower Spring Lake Landing, 3 mi. east on LDB.			
<b>Latitude:</b> 44.201081 <b>UTM Y:</b> 4894817.774		<b>Longitude:</b> -91.878984 <b>UTM X:</b> 589572.531	



*View of Weaver Bottoms outlet from Highway 14/61*



*Looking west from river into Weaver Bottoms*

**GOAL: Exclude spilled product to protect sensitive migratory waterfowl habitat**

Site Number	Waterbody, River Mile	Site Name	
742b	Mississippi River 742.1	Sommerfield Island	
Strategy Type*	Boom Length	Land Access	Boat Access
Exc.	300	N	N
Strategy Implementation ( <a href="#">Go to aerial view</a> )			
Run exclusion boom around southeast bank to keep spill from entering island backwater. High waterfowl use of islands during fall migration. Sandbars in area, adjust implementation to fit water levels.			
Site Access			
Across main channel from Minneiska, at junction of US Hwy 61 & Co. Rd. 25. Island opening on downstream side. Reach from Minneiska ramp or from Spring Lake access across river on LDB.			
Latitude: 44.197658 UTM Y: 4894449.468		Longitude: -91.868172 UTM X: 590441.689	



Looking northwest at island backwater opening



Emergent vegetation around island, looking southeast

**GOAL: Close opening to keep spilled product out of Spring Lake Closed Area**

Site Number	Waterbody, River Mile	Site Name	
742c	Mississippi River 742.0 LDB	742c	
Strategy Type*	Boom Length	Land Access	Boat Access
Exc.	50	N	N
Strategy Implementation ( <a href="#">Go to aerial view</a> )			
Boom across opening to keep spilled product from spreading into Spring Lake Closed Area. Anchor booms on either side using riprap, trees, or bushes. High water overtops riprap seasonally. Bald eagle nests in area.			
Site Access			
Small opening 1000 ft. S of Upper Spring Lake Landing on S River Rd. in Buffalo. Lower Spring Lake Landing, 1 mi. southeast, better for response boats.			
Latitude: 44.210415 UTM Y: 4895887.104		Longitude: -91.849504 UTM X: 591913.601	



Small (5 ft.) opening in low water



**GOAL: Close culverts to prevent spilled product from spreading into Whitman Dam backwaters**

Site Number	Waterbody, River Mile	Site Name	
741a	Mississippi River 740.4 LDB	Whitman Dam 1	
Strategy Type*	Boom Length	Land Access	Boat Access
<b>Exc.</b>	100-200	Y	N
<b>Strategy Implementation (<a href="#">Go to aerial view</a>)</b>			
Exclude spilled product to keep from spreading through 3 culverts into Whitman Dam Wildlife Area backwaters. Chevron boom if culverts are open (200'). High water rises above gates, floods top of levee. Reverse, slow flow in spring.			
<b>Site Access</b>			
S River Rd. along upper Whitman Dam. Reach from Buffalo or Cochrane via Co. Rd. OO. Access via boat at Lower Spring Lake Landing.			
<b>Latitude:</b> 44.198248 <b>UTM Y:</b> 4894555.576		<b>Longitude:</b> -91.831881 <b>UTM X:</b> 593340.655	



One of 3 gates in dam



Good anchors present on both sides of structure

**GOAL: Collect spilled product from creek to prevent spread into Whitman Dam backwaters**

Site Number	Waterbody, River Mile	Site Name	
741b	unnamed creek N/A	Co. Rd. OO	
Strategy Type*	Boom Length	Land Access	Boat Access
C&C	50	Y	N
Strategy Implementation ( <a href="#">Go to aerial view</a> )			
For spill from railroad tracks 2 mi. upstream, boom or dam culverts and collect spilled product from road on upstream side. Can also close water control structure north of bridge.			
Site Access			
Creek crossing along Co. Rd. OO, south of Cochrane and Buffalo between Co. Rd. O and Mississippi River.			
Latitude: 44.216007 UTM Y: 4896526.252		Longitude: -91.833483 UTM X: 593184.621	



Water control structure 50 ft. north of Co. Rd. OO



Looking northwest from water control structure

**GOAL: Collect spilled product along Dam 5a to prevent spread downstream into Pool 6**

Site Number	Waterbody, River Mile	Site Name	
739a	Mississippi River 739.5 LDB	Whitman Dam 2	
Strategy Type*	Boom Length	Land Access	Boat Access
C&C	1050	Y	N
Strategy Implementation ( <a href="#">Go to aerial view</a> )			
Four foot culvert has slots for stop blocks, contact Lockmaster 5. Contain oil along dam, 50 ft. boom across culvert opening, collect from vac truck on dam. Wind may push oil to LDB and slack water.			
Site Access			
Surface culvert on service road along Whitman Dam. Reach from Buffalo or Cochrane via Co. Rd. OO and S River Rd. Contact Lockmaster 5 for guidance. Lower Spring Lake Landing provides boat access.			
Latitude: 44.179072 UTM Y: 4892432.238		Longitude: -91.826048 UTM X: 593837.243	



River side of culvert



Same location, looking upstream along dam



**GOAL: Collect spilled product from Kamrowski Road to protect Whitman Dam backwaters**

Site Number	Waterbody, River Mile	Site Name	
739b	Bensel Pond outlet N/A	Whitman Dam WA	
Strategy Type*	Boom Length	Land Access	Boat Access
C&C	100	Y	N
Strategy Implementation ( <a href="#">Go to aerial view</a> )			
For spill from railroad or highway into Bensel Pond, contain spilled product in slack water and collect from bridge to keep from spreading into Whitman Dam Wildlife Area. Road is prone to spring flooding. Rapid current during normal water levels.			
Site Access			
Kamrowski Rd. bridge over Bensel Pond outlet. Reach from WI Hwy 35 via Prairie Moon Rd. or from Cochrane via Co. Rd. O.			
Latitude: 44.196836 UTM Y: 4894433.909		Longitude: -91.801326 UTM X: 595784.543	



Looking east from road bridge to railroad bridge

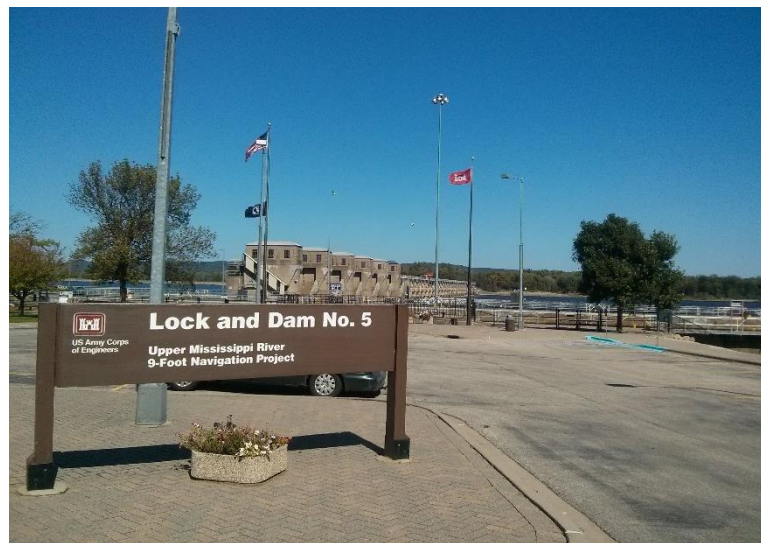


View from road into Whitman Dam Wildlife Area



**GOAL: Collect spilled product to prevent spread downstream into Pool 6**

Site Number	Waterbody, River Mile	Site Name	
738	Mississippi River 738.2 RDB	Lock & Dam 5	
Strategy Type*	Boom Length	Land Access	Boat Access
C&C	1500	Y	N
Strategy Implementation ( <a href="#">Go to aerial view</a> )			
Anchor boom to end of guide wall to collect spill in slack pool above lock. Requires upstream deflection to move product to RDB. Key collection site. Farley Haase (USACE), 651-290-5633, can be contacted about water levels and gates. Sturgeon and paddlefish congregate and spawn in dam tailwaters.			
Site Access			
Lock & Dam 5, 12554 US Hwy 61, Minnesota City, MN 55959. Contact Lockmaster for access, Tim Tabery 507-689-2101; 651-290-5944 (emergency).			
Latitude: 44.16054 UTM Y: 4890388.033		Longitude: -91.813689 UTM X: 594854.766	



Entrance with dam gates in background



Slack water pool in foreground, seen from Highway 61

**GOAL: Collect spilled product to protect downstream fish and bird habitats**

Site Number	Waterbody, River Mile	Site Name	
737	Mississippi River 737.7 RDB	Bass Camp Resort	
Strategy Type*	Boom Length	Land Access	Boat Access
C&C	1000	Y	Y
Strategy Implementation ( <a href="#">Go to aerial view</a> )			
Contain spill from main channel for collection along shore. Boom off boats/small inlet. Boat landing suitable for collection with heavy equipment. Swift currents, could increase depending on Lock & Dam 5.			
Site Access			
Marina .3 mi. downstream of Lock & Dam 5, along US Hwy 61. Camp charges launch fee.			
Latitude: 44.155222 UTM Y: 4889806.618		Longitude: -91.80577 UTM X: 595496.6	



Harbor opening, ramp at right



View from river, directly opposite top photo

**GOAL: Prevent spilled product from spreading into diverse fish and bird habitats**

Site Number	Waterbody, River Mile	Site Name	
736a	Mississippi River 736.9 LDB	Island 53	
Strategy Type*	Boom Length	Land Access	Boat Access
Exc.	300	N	N
Strategy Implementation ( <a href="#">Go to aerial view</a> )			
Exclude spill from entering Fountain City Bay inflow channel. Kick boom across opening to keep spill in main channel, shore has anchor points. Soft bottom. Walleye spawning throughout floodplain forest waters.			
Site Access			
Backwater opening 1.1 mi. downstream of Lock & Dam 5 at Island 53.			
Latitude: 44.153879 UTM Y: 4889677.164		Longitude: -91.788896 UTM X: 596848.089	



View of opening from river



**GOAL: Prevent spilled product from spreading into sensitive fish and waterfowl habitats**

Site Number	Waterbody, River Mile	Site Name	
736b	Mississippi River 736.6 RDB	Haddock Slough Openings	
Strategy Type*	Boom Length	Land Access	Boat Access
Exc.	2000	N	N
Strategy Implementation ( <a href="#">Go to aerial view</a> )			
Exclude spill from entering Haddock Slough. Multiple openings may require cascade boom on upstream side to keep spill in main channel, shore has many anchor points.			
Site Access			
Multiple backwater openings from RM 737 to RM 736.4. Boat access from Fountain City, 4 mi. downstream on LDB or Bass Camp Resort, 1.3 mi. upstream on RDB.			
Latitude: 44.148965 UTM Y: 4889136.343		Longitude: -91.784631 UTM X: 597197.233	



Main backwater opening, looking north



Sand bar and islet below opening

**GOAL: Prevent spilled product from spreading into sensitive waterfowl and fish habitats**

Site Number	Waterbody, River Mile	Site Name	
736c	Mississippi River 736.2 LDB	Devil's Cut	
Strategy Type*	Boom Length	Land Access	Boat Access
Exc.	500	N	N
Strategy Implementation ( <a href="#">Go to aerial view</a> )			
Anchor deflection boom to tip of island to keep spilled product in main channel, shore has many anchor points. Soft bottom. Prevent spill from spreading into Fountain City Bay backwaters. Bald eagle nests in area.			
Site Access			
Downstream tip of Island 54, 2 mi. below Lock & Dam 5. Boat access from Fountain City, 3.5 mi. downstream on LDB or Bass Camp Resort, 1.8 mi. upstream on RDB.			
Latitude: 44.149156 UTM Y: 4889168.634		Longitude: -91.775318 UTM X: 597941.71	



Looking east into Devil's Cut

**GOAL: Prevent spilled product from spreading into sensitive backwater habitat**

Site Number	Waterbody, River Mile	Site Name	
735	Mississippi River 735.5 RDB	Straight Slough	
Strategy Type*	Boom Length	Land Access	Boat Access
Exc.	1000	N	N
Strategy Implementation ( <a href="#">Go to aerial view</a> )			
Exclude spill from entering Straight Slough. Multiple openings may require cascade boom on upstream side to keep spill in main channel. Bald eagle nests in area.			
Site Access			
Multiple backwater openings from RM 735 to RM 735.7. Boat access from Fountain City, 2.5 mi. downstream on LDB or Bass Camp Resort, 2.3 mi. upstream on RDB.			
Latitude: 44.141167 UTM Y: 4888291.558		Longitude: -91.766673 UTM X: 598646.378	



Main channel to left, Island 53 at far right



Middle opening, Island 57 at left



**GOAL: Collect spill at lower end of Service Base to protect sensitive downstream resources**

Site Number	Waterbody, River Mile	Site Name	
733a	Mississippi River 733.3 LDB	USACE Fountain City Service Base	
Strategy Type*	Boom Length	Land Access	Boat Access
C&C	1000	Y	N
Strategy Implementation ( <a href="#">Go to aerial view</a> )			
Deep water along dock and RR tracks. Divert spill from main channel to LDB, lower end of base can be used for collection. Use trees on island for anchor points.			
Site Access			
USACE Fountain City Service Base along WI Hwy 35. Service base has equipment, boats, barges.			
Latitude: 44.134666 UTM Y: 4887619.738		Longitude: -91.725503 UTM X: 601950.53	



USACE Fountain City Service Base

**GOAL: Prevent spilled product from spreading into sensitive fish and waterfowl habitat**

Site Number	Waterbody, River Mile	Site Name	
733b	Mississippi River 733.1 RDB	733b	
Strategy Type*	Boom Length	Land Access	Boat Access
Exc.	500	N	N
Strategy Implementation ( <a href="#">Go to aerial view</a> )			
Smaller, upstream opening requires 100' boom, attach to trees, rocks in center of opening. Larger opening requires 150' boom. Attach to trees, wing dams on either side. Bald eagle nests in area.			
Site Access			
Two backwater openings across from Fountain City, WI. Reach from upper Fountain City landing directly across main channel.			
Latitude: 44.129363 UTM Y: 4887032.347		Longitude: -91.724192 UTM X: 602064.527	



View of opening from main channel



View across side channel opening, looking downstream

**GOAL: Collect spilled product to protect  
Polander Lake Closed Area downstream**

Site Number	Waterbody, River Mile	Site Name	
732	Mississippi River 732.1 LDB	Fountain City	
Strategy Type*	Boom Length	Land Access	Boat Access
C&C	1000	Y	Y
Strategy Implementation ( <a href="#">Go to aerial view</a> )			
Contain spilled product along riprap shore of landing site, collect with vac truck. Good access and staging. Anchor boom from forested point out to red buoy. Good staging and access on site.			
Site Access			
End of Mill St. in Fountain City. Reach via WI Hwy 35.			
Latitude: 44.121526 UTM Y: 4886181.334		Longitude: -91.70863 UTM X: 603323.178	



Fountain City ramp and dock



Boat access seen from main channel



**GOAL: Prevent spilled product from passing over spillway into Straight Slough**

Site Number	Waterbody, River Mile	Site Name	
728a	Mississippi River 728.5 RDB	Dam 5a Spillway	
Strategy Type*	Boom Length	Land Access	Boat Access
Exc.	100	Y	N
Strategy Implementation ( <a href="#">Go to aerial view</a> )			
Exclude from Straight Slough spillway to protect downstream resources. Two 9 ft. culvert notches exist at spillway at very edges of slough. Block notches if water is not overtopping spillway. Mussel bed below spillway.			
Site Access			
Dam 5a spillway. Reach via Prairie Island Rd. between Winona and Minnesota City. Reach by boat from McNally Landing (.3 mi. upstream on RDB) or Prairie Island Spillway Boat Ramp (1/16 mi. downstream on RDB).			
Latitude: 44.080177 UTM Y: 4881620.586		Longitude: -91.683424 UTM X: 605413.395	



Parking lot at Prairie Island boat ramp



View of spillway notch from Prairie Island boat ramp

**GOAL: Keep spilled product from spreading into fish overwintering and spawning areas**

Site Number	Waterbody, River Mile	Site Name	
728b	Mississippi River 728.0 RDB	Blackbird Slough	
Strategy Type*	Boom Length	Land Access	Boat Access
Exc.	500	N	N
Strategy Implementation ( <a href="#">Go to aerial view</a> )			
Anchor boom to upstream side of Blackbird Slough to keep spill in main channel. Fish overwintering area.			
Site Access			
Entrance to Blackbird Slough, half mile below Lock & Dam 5a. Reach by boat from Winona Municipal Harbor, 2 mi. downstream.			
Latitude: 44.081214 UTM Y: 4881758.24		Longitude: -91.666009 UTM X: 606805.87	



Tip of Island 68 (at left) with Lock & Dam 5a beyond



Tip of Island 68 (at right) and exposed flats at slough opening



**GOAL: Collect spilled product to prevent spread downstream into Pool 6**

Site Number	Waterbody, River Mile	Site Name	
728c	Mississippi River 728.5	Lock and Dam 5a	
Strategy Type*	Boom Length	Land Access	Boat Access
C&C	1500	Y	N
Strategy Implementation ( <a href="#">Go to aerial view</a> )			
Divert product from spillway and collect above Lock & Dam 5a. Close water control structure in low-flow; boom needed in high flow, anchor to fence or riprap.			
Site Access			
Off WI Hwy 35, 4 miles S of Fountain City, Wisconsin. Access lock and offices by walking across the dam.			
Latitude: 44.089522 UTM Y: 4882679.314		Longitude: -91.667332 UTM X: 606684.971	



Dam 5a, with lock chambers in background



Gated vehicle entrance off Highway 35



**GOAL: Collect spilled product to protect sensitive downstream fish and bird habitats**

Site Number	Waterbody, River Mile	Site Name	
728d	Mississippi River 728.5 LDB	Breezy Point Marina	
Strategy Type*	Boom Length	Land Access	Boat Access
C&C	500	Y	Y
Strategy Implementation ( <a href="#">Go to aerial view</a> )			
Boom in J-hook. Great access for trucks and tankers. Private road for summer homes extends downstream half mile along slough for collection and removal.			
Site Access			
1000 ft. downstream from Lock & Dam 5a on LDB, access from WI Hwy 35 & Breezy Point Ln. Collect spilled product at landing above marina and homes. Powerlines overhead at ramp.			
Latitude: 44.086929 UTM Y: 4882395.6		Longitude: -91.664025 UTM X: 606954.439	



Looking downstream at ramp



Slack water on north side of ramp; Dam 5a in background

**GOAL: Block culvert to keep spilled product from spreading into or out of Hunters Lake**

Site Number	Waterbody, River Mile	Site Name	
727	Mississippi River 727.2 RDB	Prairie Island Rd.	
Strategy Type*	Boom Length	Land Access	Boat Access
Exc.	50	Y	N
Strategy Implementation ( <a href="#">Go to aerial view</a> )			
Water flows into backwater during high river stage, out of backwater in low river stage. Block culvert if needed to prevent spilled material from passing through culvert. Locked gate to access stop gate. Fish spawning and overwintering areas.			
Site Access			
Culvert under Prairie Island Dike Rd., 500 ft. N of Riverview Dr.			
Latitude: 44.06148 UTM Y: 4879561.587		Longitude: -91.669675 UTM X: 606547.776	



East end (river side) of culvert



Gate and water control on west side of levee



**GOAL: Collect spilled product above marina to protect sensitive downstream resources**

Site Number	Waterbody, River Mile	Site Name	
725	Mississippi River 725.0 RDB	Winona Riverfront	
Strategy Type*	Boom Length	Land Access	Boat Access
C&C	550	Y	Y
Strategy Implementation ( <a href="#">Go to aerial view</a> )			
Contain spilled product in slower flow area below where levee juts into river. Collect from levee with vac truck and skimmers. J-hook 250 ft. boom, cascade three 100 ft. sections to shore.			
Site Access			
Slow water area just above Winona Marina at end of Laird St. Small ramp at marina, moderate staging by substation next door.			
Latitude: 44.053443 UTM Y: 4878725.581		Longitude: -91.626601 UTM X: 610012.543	



Winona Marina boat ramp



Slow flow area with Bay City Milling in background

**GOAL: Collect spilled product at boat ramp to protect sensitive downstream resources**

Site Number	Waterbody, River Mile	Site Name	
724	Mississippi River 724.5 RDB	St. Charles Street Boat Ramp	
Strategy Type*	Boom Length	Land Access	Boat Access
C&C	1000	Y	Y
Strategy Implementation ( <a href="#">Go to aerial view</a> )			
Deflect spilled product into containment area on downstream side of boat landing. Note outfall 200 ft. downstream. Collect with vac truck at ramp or along riprap shore.			
Site Access			
660 E Front St., Winona, at Lions Park.			
Latitude: 44.051101 UTM Y: 4878477.808		Longitude: -91.617372 UTM X: 610756.149	



View of point from dock



Slack water area, opposite side of dock



**GOAL: Block culvert to prevent spread of spilled product into main pool**

Site Number	Waterbody, River Mile	Site Name	
723	Trempealeau NWR N/A	Trempealeau Oxbow Dike Culvert	
Strategy Type*	Boom Length	Land Access	Boat Access
Exc.	50	Y	N
Strategy Implementation ( <a href="#">Go to aerial view</a> )			
Slow flow, sub-surface pond levelors present under culvert. Dam culvert and encircle with boom to keep spill into west pool from spreading into rest of Refuge. Cooperate with BNSF to ensure responder safety.			
Site Access			
3 ft. culvert under RR tracks at end of Oxbow Dike road. Reach via WI Hwy 35 and River Bottoms Rd. Contact Refuge to unlock gated access. No staging, single dirt track dike with small turnaround for pickup or smaller vehicle.			
Latitude: 44.05496 UTM Y: 4878954.104		Longitude: -91.582327 UTM X: 613556.115	



View of west end of culvert from Oxbow Dike road.

**GOAL: Collect spilled product at creek mouth to protect sensitive downstream resources**

Site Number	Waterbody, River Mile	Site Name	
722	Mississippi River 722.0 RDB	Pleasant Valley Creek	
Strategy Type*	Boom Length	Land Access	Boat Access
C&C	1000	Y	N
Strategy Implementation ( <a href="#">Go to aerial view</a> )			
Contain spilled product in slack water behind railroad ballast, collect with vac truck from turnoff along highway. Minimal staging on site. Cooperate with CP to ensure responder safety.			
Site Access			
Small embayment behind railroad at mouth of Pleasant Valley Creek, 1.5 mi. east of Winona along US Hwy 14/61, at CP Rail Mile 305.			
Latitude: 44.025479 UTM Y: 4875681.163		Longitude: -91.581227 UTM X: 613700.582	



View of railroad bridge from river



Small turnaround off Highway 14/61

**GOAL: Block culverts to keep spilled product from reaching pumps and lower pool or river**

Site Number	Waterbody, River Mile	Site Name	
719a	Trempealeau NWR N/A	Trempealeau Kieps Island Pumphouse	
Strategy Type*	Boom Length	Land Access	Boat Access
<b>Exc.</b>	50	Y	N
<b>Strategy Implementation (<a href="#">Go to aerial view</a>)</b>			
Boom across culvert openings to keep spill into main pool from spreading into lower pool. Backflow can occur, ask Refuge staff for seasonal status. Pump operated by Refuge staff.			
<b>Site Access</b>			
Reach via Kieps Island Road, contact Refuge to unlock gate at canoe launch and pumphouse. Also provides access to RR tracks on foot. T-culvert passes from main pool to lower pool and through 80hp pumps to Mississippi River.			
<b>Latitude:</b> 44.027121 <b>UTM Y:</b> 4875940.283		<b>Longitude:</b> -91.52664 <b>UTM X:</b> 618071.949	



Pump behind pumphouse



River end of culvert



**GOAL: Collect product spilled upstream to keep from spreading to Mississippi River**

Site Number	Waterbody, River Mile	Site Name	
719b	Trempealeau NWR N/A	Trempealeau River Bridge	
Strategy Type*	Boom Length	Land Access	Boat Access
C&C	300	Y	Y
Strategy Implementation ( <a href="#">Go to aerial view</a> )			
Boom from RDB above bridge to divert product spilled upstream to small earthen ramp on LDB below bridge. Anchor to trees on shore. Dam culvert to keep spill from spreading through wetlands. Minimal staging on site.			
Site Access			
Refuge access road bridge over Trempealeau River. Access from WI Hwy 35 via W Prairie Rd. Also small culvert at bottom of slope from entrance parking lot.			
Latitude: 44.051105 UTM Y: 4878615.405		Longitude: -91.51884 UTM X: 618649.443	



Bridge viewed from small boat access



Opposite view from bridge to access



**GOAL: Block culverts to keep spill into lower pool from spreading into Trempealeau River**

Site Number	Waterbody, River Mile	Site Name	
718a	Trempealeau NWR N/A	Trempealeau Outlet	
Strategy Type*	Boom Length	Land Access	Boat Access
Exc.	100	Y	N
Strategy Implementation ( <a href="#">Go to aerial view</a> )			
Boom across water control structure openings to keep spill into lower pool from spreading into rivers. Four gates can be closed with drill. Structure has electric weir to block fish passage. Backflow can occur, ask Refuge staff for seasonal status.			
Site Access			
Reach via Dike Road, contact Refuge to unlock gate. Culverts open to Trempealeau River.			
Latitude: 44.027056 UTM Y: 4875969.196		Longitude: -91.501618 UTM X: 620077.34	



Dike road water control structure

**GOAL: Collect product spilled into side channel to prevent spread into main channel**

Site Number	Waterbody, River Mile	Site Name	
718b	Mississippi River 718 RDB	Forest River Campground	
Strategy Type*	Boom Length	Land Access	Boat Access
C&C	1000	Y	Y
Strategy Implementation ( <a href="#">Go to aerial view</a> )			
For spill along MN shore, collect and recover at campground boat landing. Boom from island to deflect, anchor at landing to draw product to shore. Spill in main channel prevented by island and wing dams from moving to site.			
Site Access			
Three miles east of Winona along US Hwy 61.			
Latitude: 44.013311 UTM Y: 4874436		Longitude: -91.506185 UTM X: 619739	



Campground boat access and small staging area



Looking WNW from dock into side channel



**GOAL: Prevent spilled product from spreading into sensitive fish habitat and wetlands**

Site Number	Waterbody, River Mile	Site Name	
717a	Mississippi River 717.5 RDB	717a	
Strategy Type*	Boom Length	Land Access	Boat Access
Exc.	500	Y	N
Strategy Implementation ( <a href="#">Go to aerial view</a> )			
Cascade boom to keep spilled product in main channel and protect important fish spawning and overwintering habitat and commercial fishery.			
Site Access			
Wetlands just above mouth of Cedar Creek, across river from Trempealeau Mountain. Six mi. downstream of Winona, at CP Rail Mile 299.8. Access from Sunset Bay Marina, 3.3 mi. downstream on LDB.			
Latitude: 44.01041 UTM Y: 4874126		Longitude: -91.497825 UTM X: 620415	



Emergent vegetation at small upper opening



Wider backwater opening below small, unnamed island

**GOAL: Close backwater openings to protect island waterfowl and fish habitats**

Site Number	Waterbody, River Mile	Site Name	
717b	Mississippi River 717.2	Johnson Island 1	
Strategy Type*	Boom Length	Land Access	Boat Access
<b>Exc.</b>	200	N	N
<b>Strategy Implementation (<a href="#">Go to aerial view</a>)</b>			
Boom across openings to protect important habitat within the island complex. Anchor to trees on both sides. Bald eagle nest in area.			
<b>Site Access</b>			
Double opening on island just across side channel from mouth of Trempealeau River. Access from Sunset Bay Marina, 3 mi. downstream on LDB.			
<b>Latitude:</b> 44.014712 <b>UTM Y:</b> 4874618.848		<b>Longitude:</b> -91.48753 <b>UTM X:</b> 621231.509	



Large upper opening, 500 ft. above site 716a



Looking upstream, Trempealeau Mountain at right



**GOAL: Close backwater openings to protect island waterfowl and fish habitats**

Site Number	Waterbody, River Mile	Site Name	
716a	Mississippi River 717	Johnson Island 2	
Strategy Type*	Boom Length	Land Access	Boat Access
<b>Exc.</b>	50	N	N
Strategy Implementation ( <a href="#">Go to aerial view</a> )			
Boom across opening to protect important habitat within the island complex. Anchor to trees on both sides.			
Site Access			
Small opening on island south of mouth of the Trempealeau River. Access from Sunset Bay Marina, 3 mi. downstream on LDB.			
Latitude: 44.013932 UTM Y: 4874537.517		Longitude: -91.483934 UTM X: 621521.339	



Small lower opening, 500 ft. downstream of site 717b

**GOAL: Collect spill to protect fish habitat and mussel beds below spillway in Pool 7**

Site Number	Waterbody, River Mile	Site Name	
714b	Mississippi River 714.2 RDB	Dam 6 Spillway	
Strategy Type*	Boom Length	Land Access	Boat Access
C&C	1500	Y	N
Strategy Implementation ( <a href="#">Go to aerial view</a> )			
Protect mussel beds below dam. Low flow may allow use of boom to keep spilled product from passing over spillway. Depending on product, boom below the spillway may be used to collect at private sites. Bald eagle nests in area.			
Site Access			
Downstream end of Pool 6 along Minnesota bank. CP Rail gated access from US Hwy 61. Private access below spillway.			
Latitude: 43.993214 UTM Y: 4872294.22		Longitude: -91.44521 UTM X: 624668.674	



View across railroad tracks toward wall at spillway



West end of spillway, note notch near wall

**GOAL: Collect spilled product above Lock and Dam 6 to prevent spread into Pool 7**

Site Number	Waterbody, River Mile	Site Name	
714c	Mississippi River 714.2 LDB	Lock and Dam 6	
Strategy Type*	Boom Length	Land Access	Boat Access
C&C	2000	Y	Y
Strategy Implementation ( <a href="#">Go to aerial view</a> )			
Divert product from spillway and collect above L&D 6. Leaking vessel can be held in lock. Vac truck can access either site easily. Excellent staging area. Avoid strategies that close nearby marina.			
Site Access			
Turn south from WI Hwy 35 on Fremont St., cross railroad tracks and bear right on Lock and Dam Rd. Request access at security gate. Boat access available at adjacent marina.			
Latitude: 44.00017 UTM Y: 4873078.62		Longitude: -91.437404 UTM X: 625279.916	



Tip of lock guide wall, marina to left, lock & dam to right



Trempealeau Marina ramp