

RULET Overview



- **20,000** vessels in US waters with pollution potential
- **573** wrecks that met the initial criteria after using tiered approach
- **107** wrecks pose a substantial pollution
- **87** risk assessment packages were developed for USCG.
- Based on vessel contents, condition, environmental sensitivity and other factors:
 - **6** vessels are high priority for a Most Probable (10%) discharge
 - **36** are high priority for a Worst Case Discharge of the 20,000 wrecks in US waters.

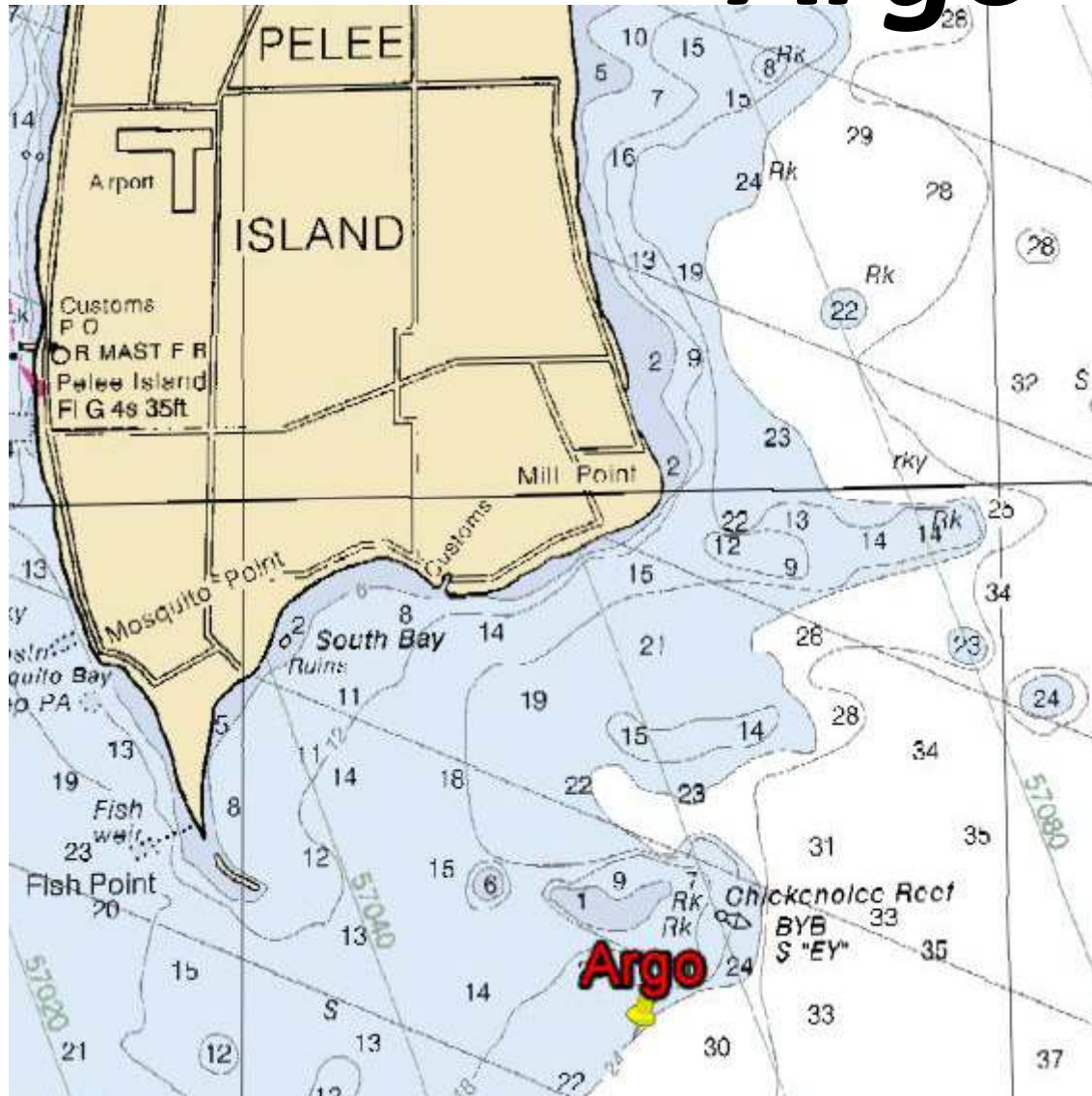
RULET in the Lakes



- No High Priority wrecks for Most Probable (10%) Discharge or Worst Case Discharge located in the Great Lakes.
- NOAA disclaimer:
- ***“These are recommendations; the final determination of what type of action, if any, rests with the U.S. Coast Guard under authority from the National Contingency Plan and the Oil Pollution Act of 1990.”***

Name	WCD Final Score	MP Final Score	USCG District
Argo	14	12	9
Prins Willem V**	14	11	9
Edmund Fitzgerald	12	10	9
Monrovia**	12	10	9
Material Service	11	11	9

Argo



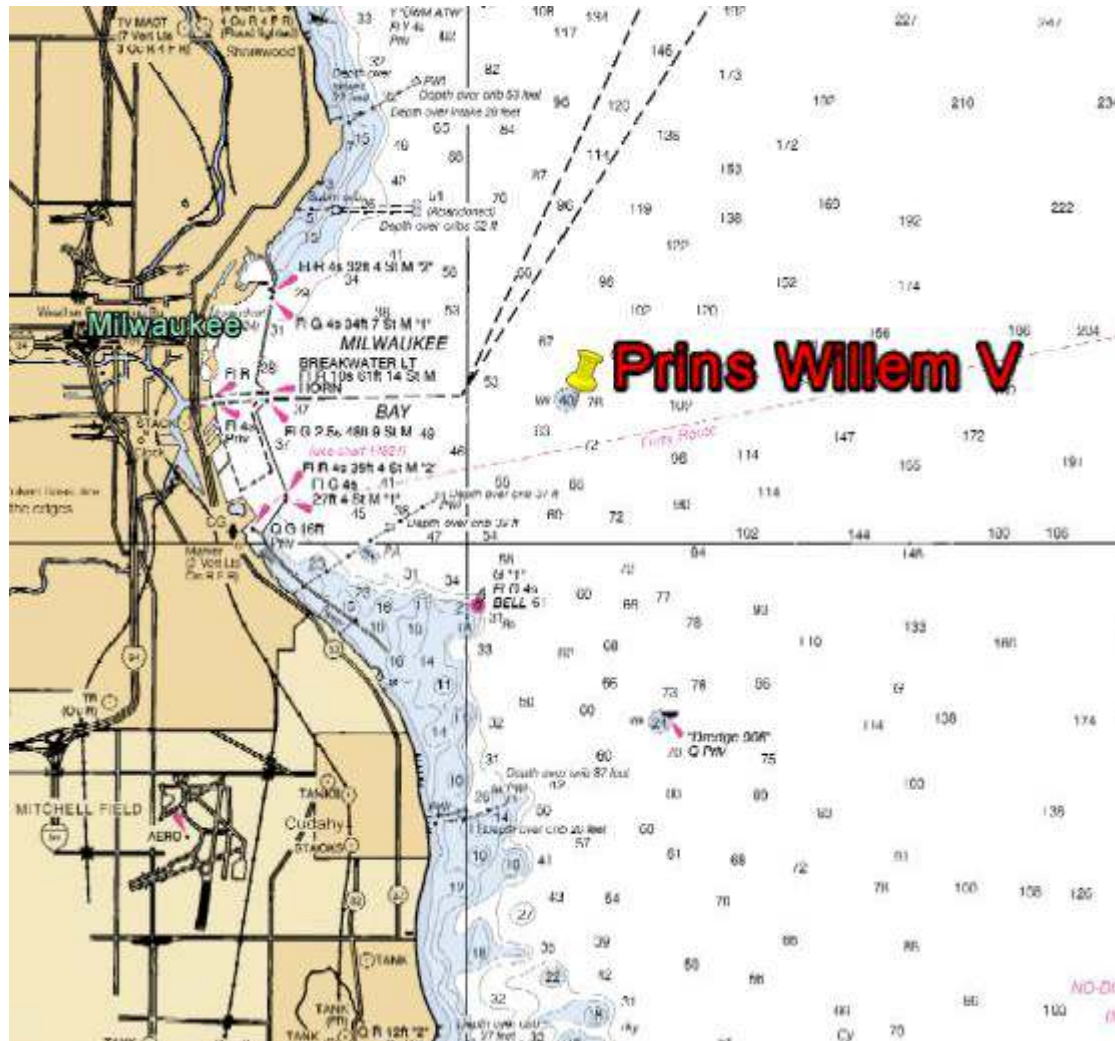
Built: 1911 **Lost:** Oct 1937 **Flag:** US
L: 120' **B:** 35' **D:** 12' **GT:** 421
Hull: Steel **Cargo of concern:** 2,381
bbls benzol, 2,381 bbls crude oil
Position: 41.705 / -82.624

- Exact location unknown
- No reports of oil in water at the time of sinking
- Reportedly sheening (unconfirmed)
- Current condition unknown
- In Canadian waters (~40' deep)
- May hold historic significance

WCD score: 14

MPD score: 12

Prins Willem V



Built: 1940 **Lost:** Oct 1954

Flag: Netherlands

L: 258' **B:** 40' **D:** UNK **GT:** 1,567

Hull: Steel **Cargo of concern:** diesel, UNK volume

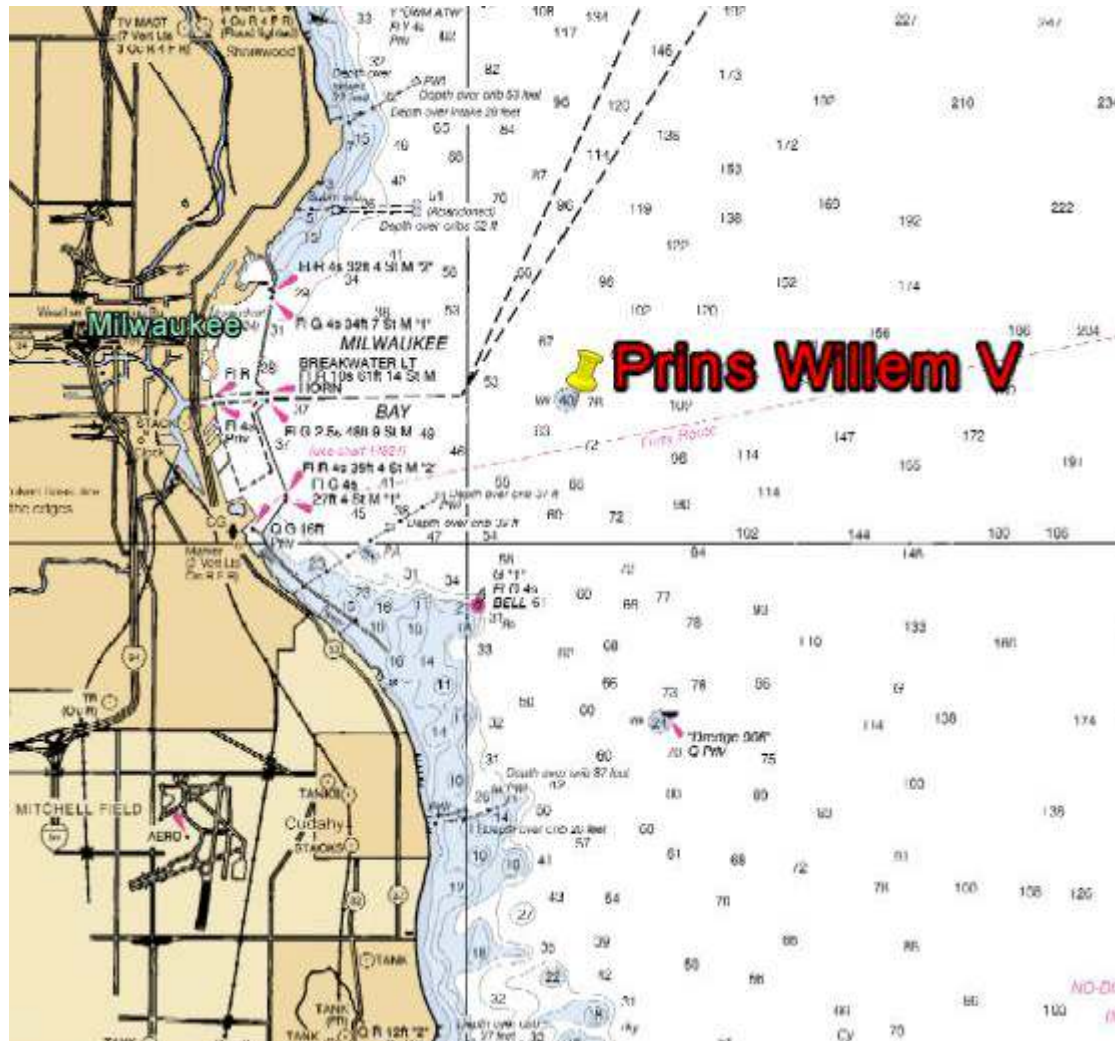
Position: 43.02473 / -87.80702

- Largely intact, popular dive site
- Resting in ~90' on stbd side
- Unknown how much fuel may remain aboard
- Historically significant wreck

WCD score: 14

MPD score: 11

Edmund Fitzgerald



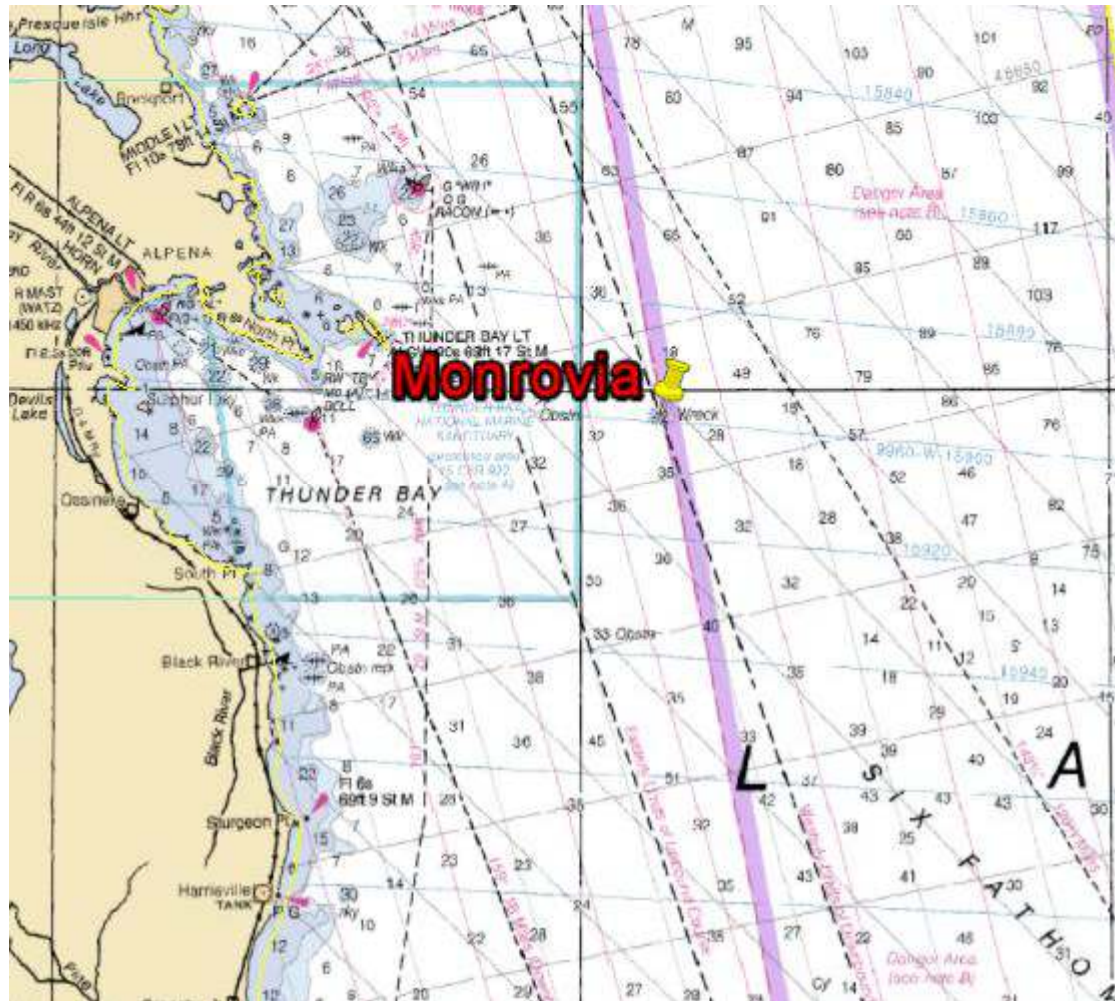
Built: 1958 **Lost:** Nov 1975 **Flag:** US
L: 729' **B:** 75' **D:** 38' **GT:** 13,632
Hull: Steel **Cargo of concern:** No. 6 fuel oil, $\leq 1,191$ bbls
Position: 46.9985 / -85.11

- Broken in two in 530', bow on even keel, stern inverted
- Unknown how much fuel may remain aboard
- In Canadian waters
- Gravesite
- Historically significant wreck

WCD score: 12

MPD score: 10

Monrovia



Built: 1943 **Lost:** June 1959

Flag: Liberia

L: 448' **B:** 56' **D:** 26' **GT:** 6,674

Hull: Steel **Cargo of concern:** No. 6 fuel oil, 1,190 bbls

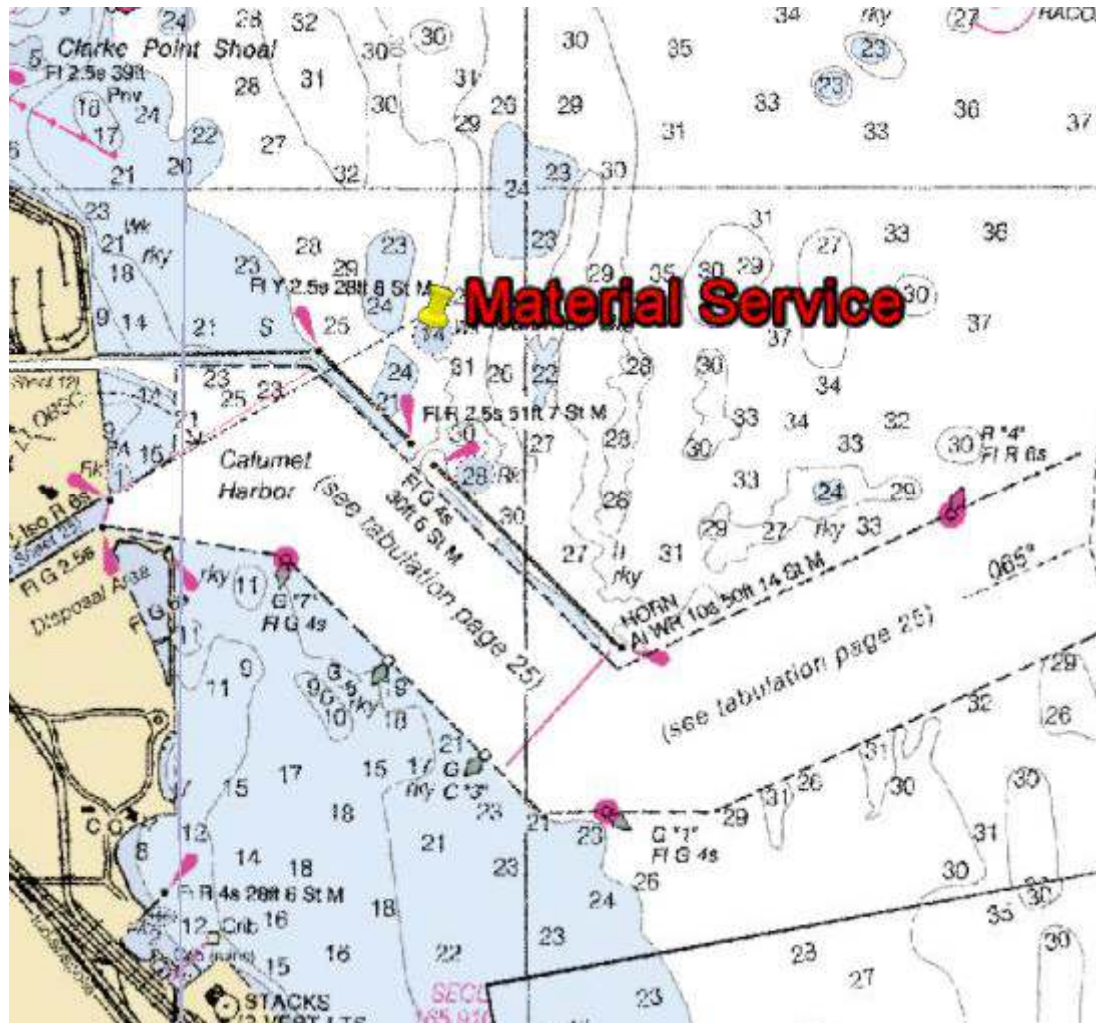
Position: 44.9837 / -82.923

- Resting on even keel in 140'
- Partially dynamited for salvage
- Within proposed boundary of expanded TBNMS
- May hold historic significance
- Depth/cold water may have prevented release

WCD score: 12

MPD score: 10

Material Service



Built: 1929 **Lost:** July 1936 **Flag:** US

L: 240' **B:** 40' **D:** 13' **GT:** 1,077

Hull: Steel **Cargo of concern:**

Diesel, \leq 3,000 bbls

Position: 41.742 / -87.507

- Resting on even keel in ~30'
- Popular dive site
- Partially salvaged, stern dynamited
- Unknown if any oil remains aboard
- Gravesite
- Historically significant wreck

WCD score: 11

MPD score: 11