

Spring RRT5 Planning Subcommittee Meeting

APRIL 27, 2022

LED BY KIM CHURCHILL, RRT5 PLANNING SUBCOMMITTEE CHAIR



Pre-Meeting Call on April 11, 2022

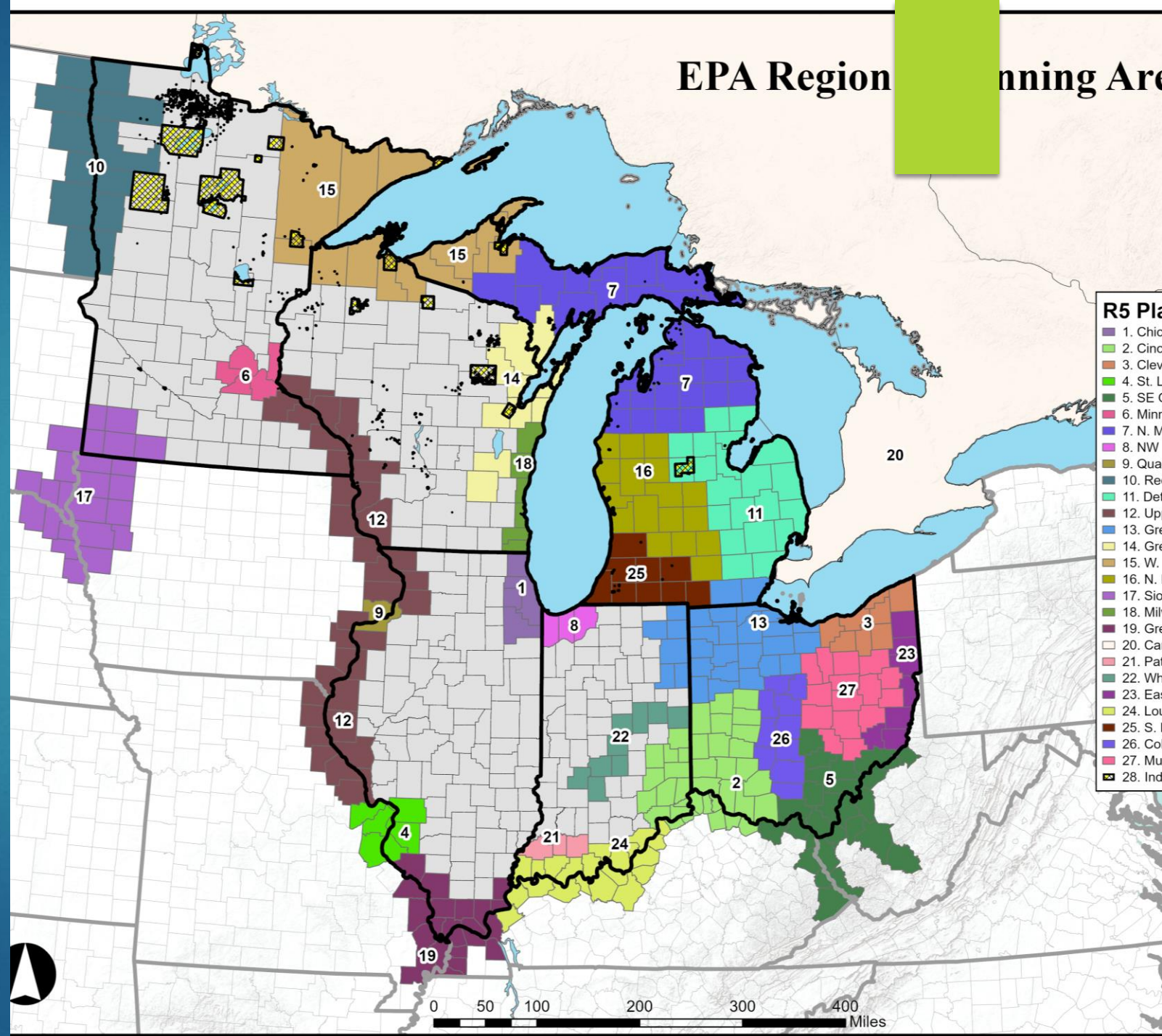
THANKS FOR ALL WHO PARTICIPATED AND VOLUNTEERED TO
PROVIDE UPDATES AND DISCUSSION TOPICS.

Summary

- ▶ Pre-Meeting Call on April 11, 2022
- ▶ Contingency Planning Updates
 - ▶ Area Contingency Planning
 - ▶ Sub-Area Contingency Planning
 - ▶ Geographic Response Strategies
- ▶ ESA Workgroup Updates
- ▶ National Historic Preservation Act and Special Project Detail Update
- ▶ Mapping and Fate and Transport Tools Updates
- ▶ rrt5.org Website Updates
- ▶ Open Forum/Items of Interest

EPA Sub-Area Updates

- ▶ South Lower West Michigan
 - ▶ OSC DJ Droste has left the agency
 - ▶ Awaiting replacement
- ▶ Great Black Swamp Inland Zone Sub-Area Contingency Plan nearing completion
- ▶ New Ohio Inland Sub-Areas
 - ▶ Columbus/Scioto (OSC Jackie Cole)
 - ▶ Muskingum (OSCs Josh Peters and Jackie Cole)





USCG Geographic Response Strategy Update West Michigan

LTJG MIKE ZELLER, USCG



ESA Workgroup Update

JERRY POPIEL, USCG

John Nelson, DOI

National Historic Preservation Act Special Project Detail Update

Improving coordination between
SHPO/THPO/Tribes and responding agencies during
an oil spill



Mapping Projects Data Layers and Fate and Transport Tools Updates

KIM CHURCHILL, EPA

JON GULCH, EPA

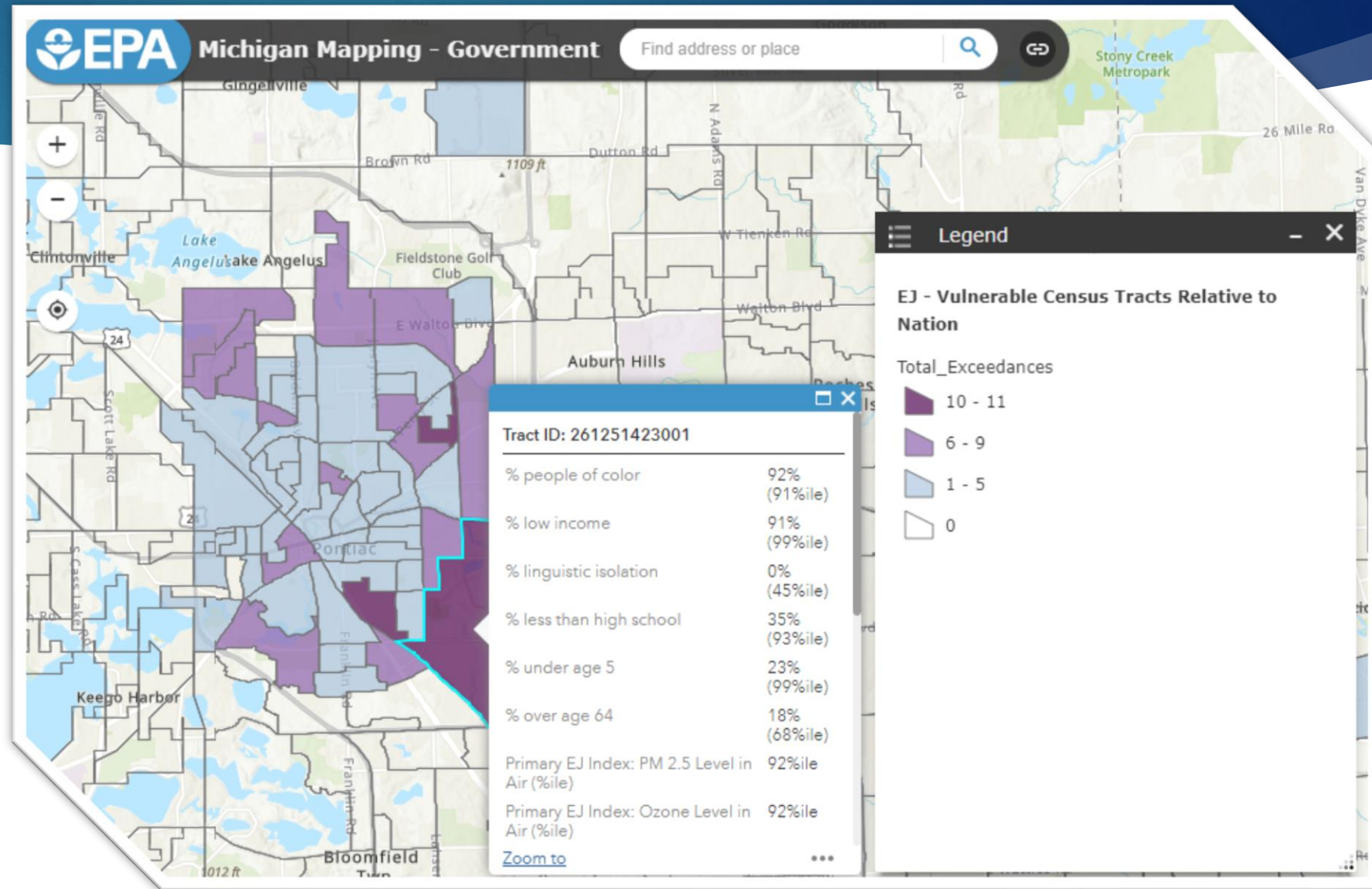
FAITH FITZPATRICK, USGS

State Mapping Project Updates

NEW DATA LAYER!

Environmental Justice (EJ) Data Layer

- ▶ Vulnerable Census Tracts Relative to State
- ▶ Vulnerable Census Tracts Relative to Nation

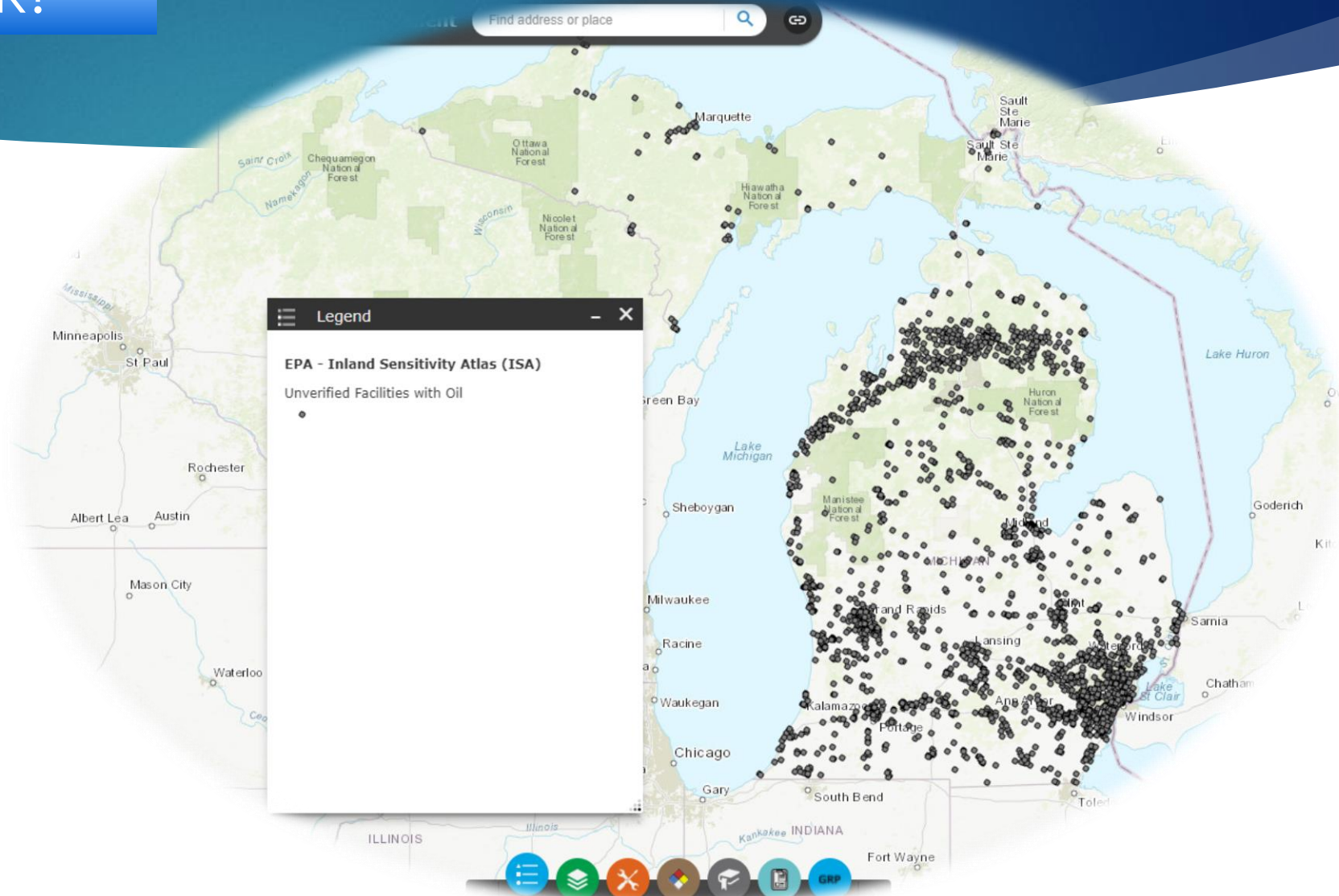


State Mapping Project Updates

NEW DATA LAYER!

Unverified Facilities with Oil Layer

- ▶ Facilities with less than 42,000 gallons of oil storage capacity
- ▶ Data coming from Tier II reporting data
 - ▶ No additional confirmation outside of Tier II reporting data (which is done for the AST layer)
- ▶ Updates published quarterly

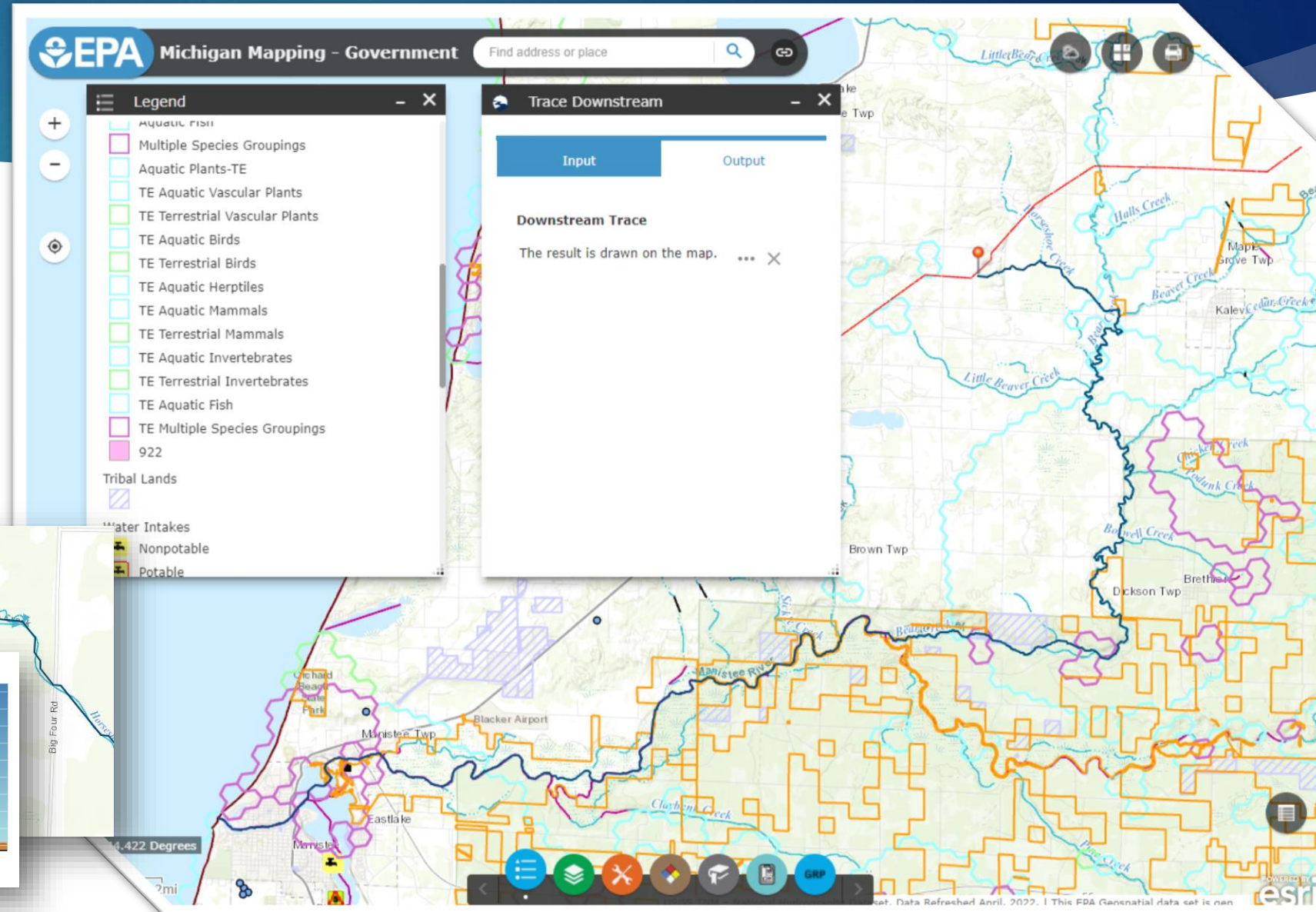
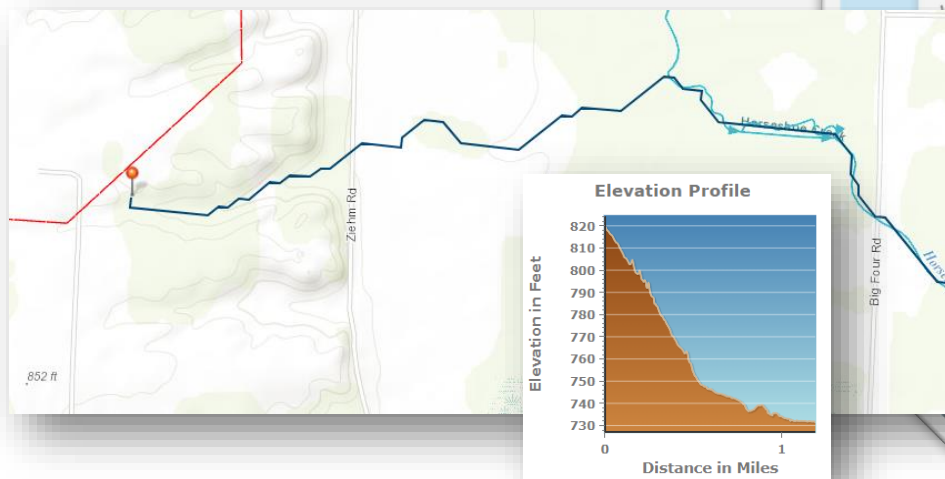


State Mapping Project Updates

NEW WIDGET!

Trace Downstream

- Drop a pin and get path to closest waterway and connected waterways

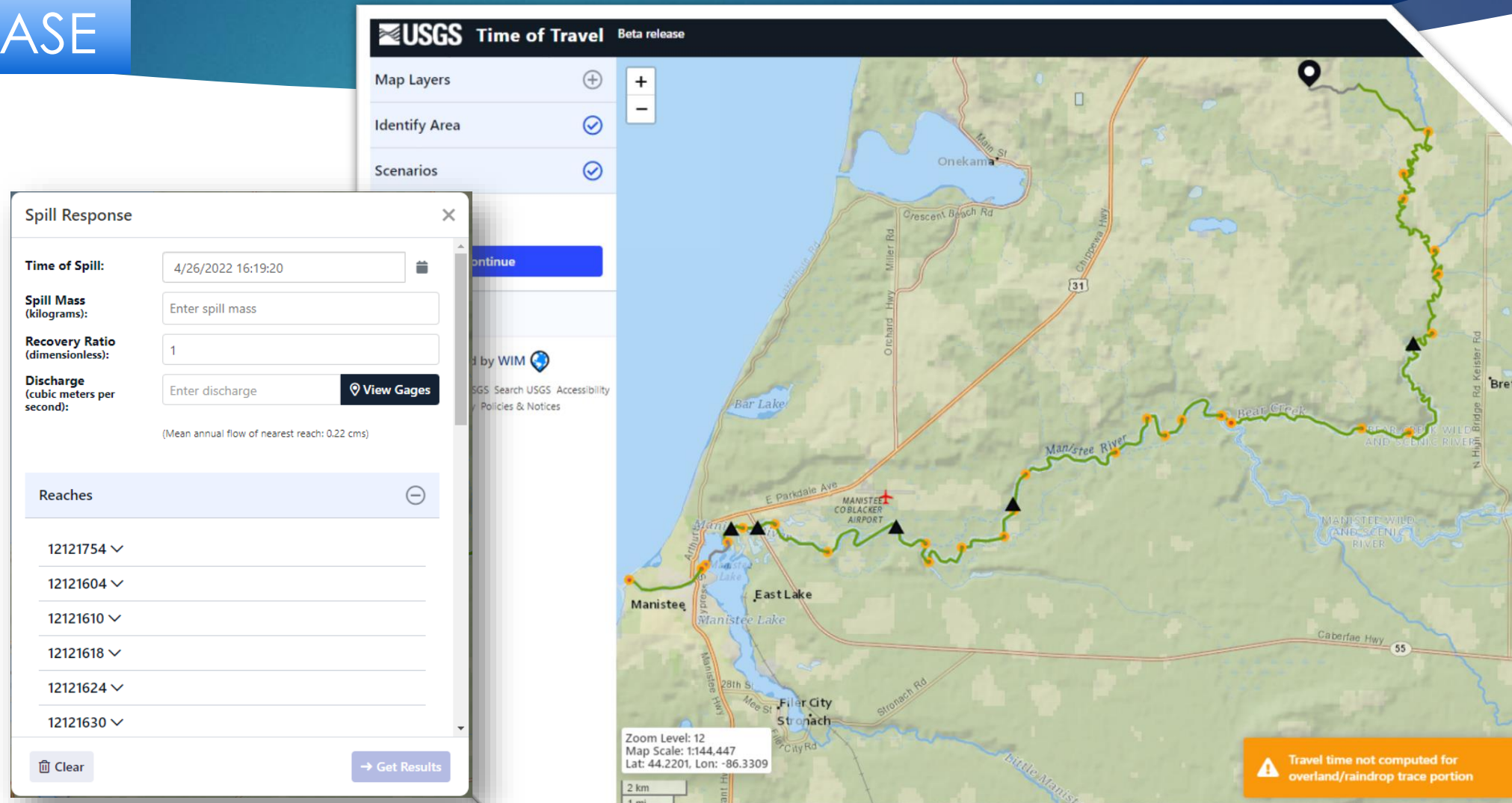


USGS StreamStats

BETA RELEASE

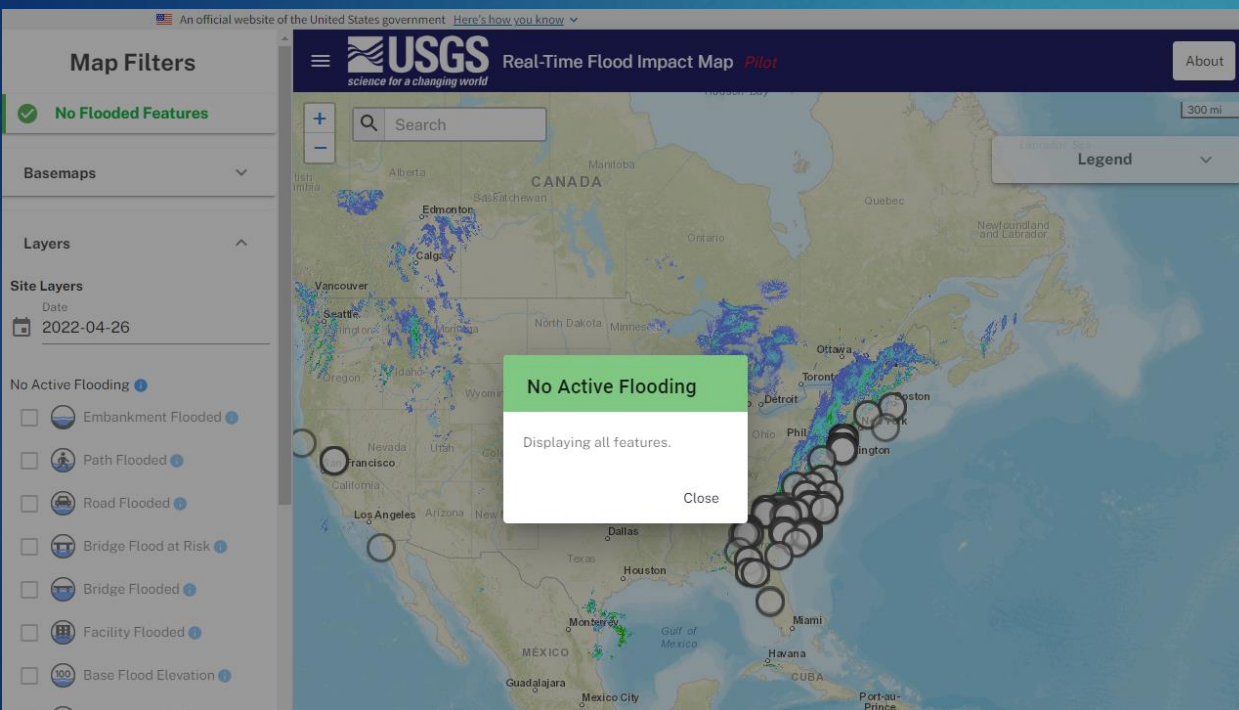
- ▶ Time of Travel
- ▶ Spill Response
- ▶ Spill Planning

<https://streamstats.usgs.gov/tot-beta/>



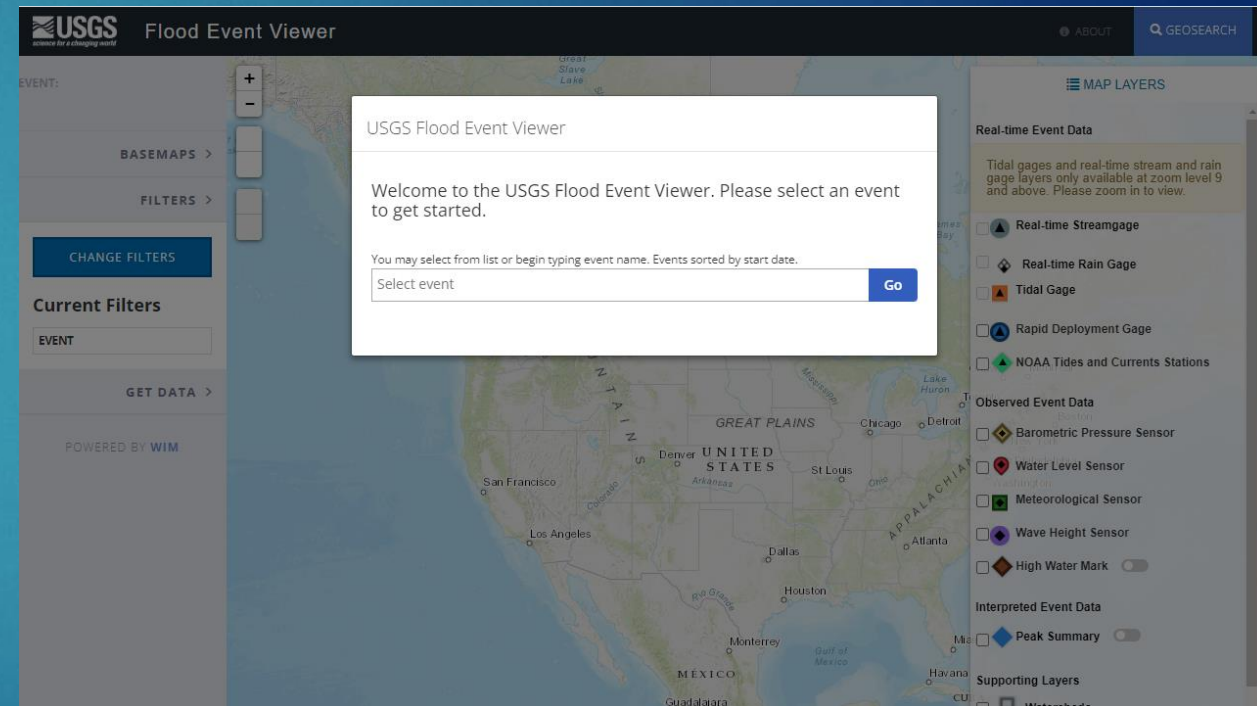
USGS Flood Maps

Real-Time Flood Impact Map

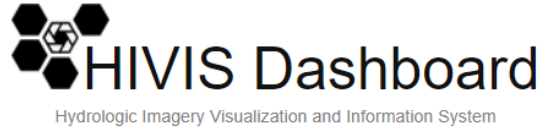


<https://test.wim.usgs.gov/thresholds/#/>

Flood Event Viewer



<https://stn.wim.usgs.gov/FEV/>



Filter Cameras: State



There was an error fetching the cameras. Try again later.

The HIVIS project is run by the USGS Advanced Technology Group out of the Upper Midwest Water Science Center with funding from Next Generation Water Observing Systems and the NWIS Modernization Project.

Contact Joe Federer (jfederer@usgs.gov) with HIVIS processing and software questions. Contact Dave Owens (dowens@usgs.gov) with camera related questions or to join the program.

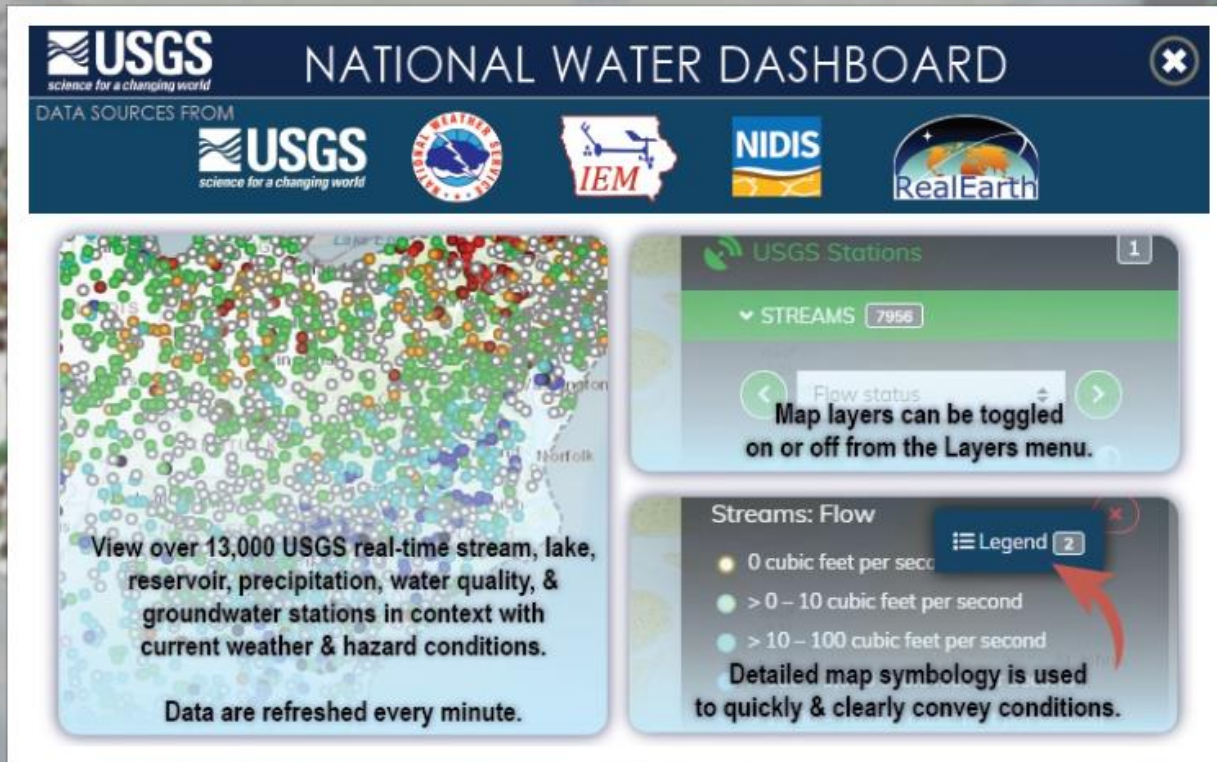
USGS Monitoring Stations w/ Cameras

HYDROLOGIC IMAGERY
VISUALIZATION AND
INFORMATION SYSTEM (HIVIS)

[HTTPS://APPS.USGS.GOV/HIVIS/](https://apps.usgs.gov/hivis/)

USGS ICE! Ice Jam Hazard Mobile-Friendly Website

- ▶ The project team worked with the US Army Corps of Engineers, National Weather Service, Silver Jackets, and USGS stakeholders to develop a mobile-friendly prototype of an Ice Jam Hazard website and reporting system.
- ▶ The prototype shows how ice jam conditions can be recorded nationwide.
- ▶ The public can view and download ice jam information.
- ▶ Historic ice jam locations and frequencies, as well as potentially hazardous developing ice jams, are valuable data.
- ▶ Given the science, modeling, and hazard warning potential provided by this data, continued development of this system is widely supported.
- ▶ https://www.usgs.gov/centers/cdi/science/ice-ice-jam-hazard-mobile-friendly-website?qt-science_center_objects=0#qt-science_center_objects



USGS National Water Dashboard

<https://dashboard.waterdata.usgs.gov/app/nwd/?aoi=default>

USGS Geospatial Information Response Team (GIRT)

- ▶ The USGS established the GIRT to facilitate the effective coordination, communication, dissemination and archive of geospatial data and information during a disaster event.
- ▶ The GIRT ensures that timely geospatial data are available for use by emergency responders, land and resource managers, and for scientific analysis.
- ▶ In an emergency and response capacity, the GIRT is responsible for facilitating the coordination, communication, dissemination and archive of geospatial data and information prior to, during and after a disaster event.
- ▶ https://www.usgs.gov/ngp-user-engagement-office/geospatial-information-response-team?qt-science_support_page_related_con=3#qt-science_support_page_related_con

Incident Command Tool for Protecting Drinking Water (ICWater)

Structured around the RiverSpill model which has been enhanced to make use of the 1:100,000 scale National Hydrography Dataset Plus (NHDPlus)

Front and trailing, weathering, mixing, 1st couple of days of spill

rrt5.org Website Updates



PLANS
RCP/ACP

Integrate Contingency Plan (RCP/ACP) fulfills the requirements of 300.210(b)(1)(ii) of the National Oil and Hazardous Substances Pollution

Contingency Plan (NCP) and Section 311(j) (4) of the Clean Water Act (CWA), as well as relevant portions of the National Response Framework, particularly Emergency Support Function #10—Hazardous Materials (ESF #10).



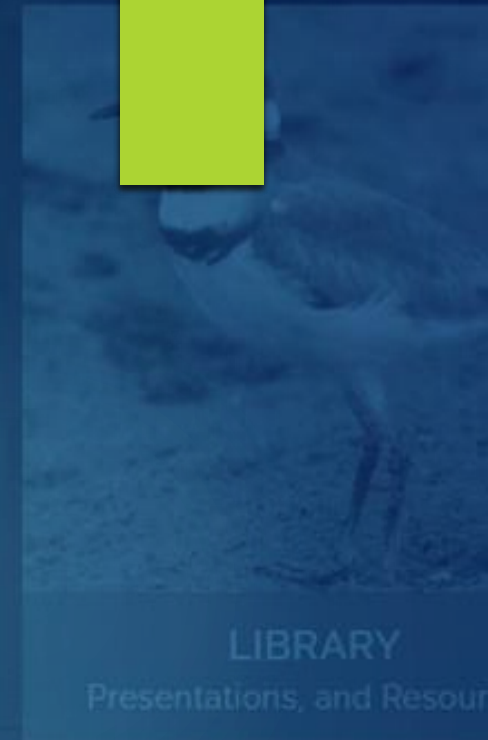
SUBAREAS
Maps and Resources

The Region 5 Subareas Storymap provides a subarea for Region 5 and links to each of the relevant plans affecting that jurisdiction.



TOOLS
RCP/ACP Tools

Factsheets, forms, response tactics, best practices, and more.



LIBRARY
Presentations, and Resources

Find resources on a variety of topics, from recent trainings, fact sheets, best practices, lessons learned, and more.

▶ RRT Home

- ▶ Site Profiles from response.epa.gov

▶ Calendar

▶ RCP/Inland Zone ACP

▶ Tools

- ▶ Air Monitoring Evaluation

Find out about upcoming RRT meetings, trainings, and more.

- ▶ Geographic Response Plans

Calendar.

- ▶ Habitat Factsheets
- ▶ ICS Forms and References
- ▶ IPaC Tool
- ▶ National Historic Preservation Act
- ▶ Response Capability

- ▶ Species Factsheets
- ▶ Submerged Oil Tactics

- ▶ Tactics Manual
- ▶ Vendor Protocol

▶ Sub-Areas

▶ Interactive Mapping

▶ Library

▶ Bakken Oil

▶ Biofuels

▶ Coal Ash

▶ Flood and Natural Disasters

▶ In Situ Burning

▶ National Historic Preservation

▶ Oiled Wildlife

▶ PFOS/PFAS

▶ Pipelines

▶ Railroads

▶ RCP/ACP

▶ Transport of Oil/Flammable Liquids

▶ Tribal Fact Sheets

▶ Vapor Intrusion

▶ International

▶ RRT



Open Forum