

# Spring RRT5 Planning Subcommittee Report Out

APRIL 28, 2022

KIM CHURCHILL, RRT5 PLANNING SUBCOMMITTEE CHAIR



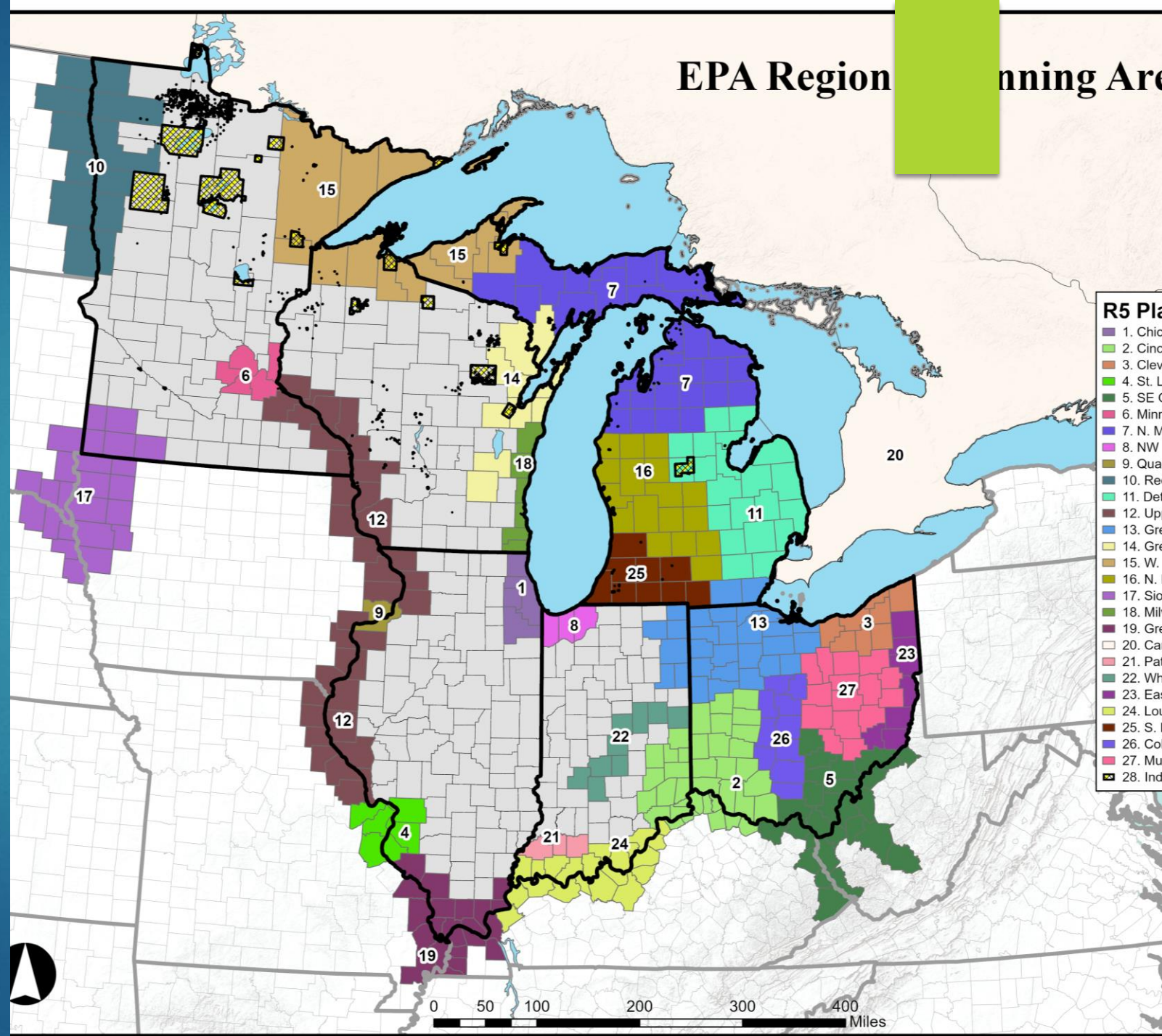
# Summary

- ▶ Pre-Meeting Call on April 11, 2022
- ▶ Contingency Planning Updates
  - ▶ Area Contingency Planning
  - ▶ Sub-Area Contingency Planning
  - ▶ Geographic Response Strategies
- ▶ ESA Workgroup Updates
- ▶ National Historic Preservation Act and Special Project Detail Update
- ▶ EPA Mapping and USGS Tools Updates
- ▶ rrt5.org Website Updates



# EPA Sub-Area Updates

- ▶ South Lower West Michigan
  - ▶ OSC Sean Kane new lead
- ▶ New Ohio Inland Sub-Areas
  - ▶ Columbus/Scioto (OSC Jackie Cole)
  - ▶ Muskingum (OSCs Josh Peters and Jackie Cole)
- ▶ Progress with many sub-areas with updating SACPs
- ▶ Looking to expand Minneapolis/St. Paul sub-area to include additional upstream counties



# USCG Planning Updates

- USCG Geographic Response Strategy Validation in West Michigan – May 2022
- CANUSLAK Annex 1 Update – Great Lakes Operational Supplement
- [https://www.atlanticarea.uscg.mil/Portals/7/Ninth%20District/Documents/2022\\_CANUSLAK\\_Annex\\_to\\_CANUS\\_JCP.pdf?ver=JA0EEc8ccHbPi8k8gZAKUQ%3d%3d](https://www.atlanticarea.uscg.mil/Portals/7/Ninth%20District/Documents/2022_CANUSLAK_Annex_to_CANUS_JCP.pdf?ver=JA0EEc8ccHbPi8k8gZAKUQ%3d%3d)

- Final stages of Biological Evaluation (BE) for Region 5 RCP/Inland ACP
- Includes species description pages, impacts of response actions, species present in action areas, etc.
- Hope to be completed in time for Fall 2022 RRT5 meeting



# Endangered Species Act (ESA) Workgroup Update

JERRY POPIEL, USCG





# **National Historic Preservation Act Special Project Detail Update**

John Nelson, DOI

- ▶ Improving coordination between SHPO/THPO/Tribes and responding agencies during an oil spill
- ▶ Reviewed existing policy and planning with States/Tribes and evaluated for potential nationwide recommendations for improvement in coordination

# EPA Mapping Projects Updates and USGS Tools Updates



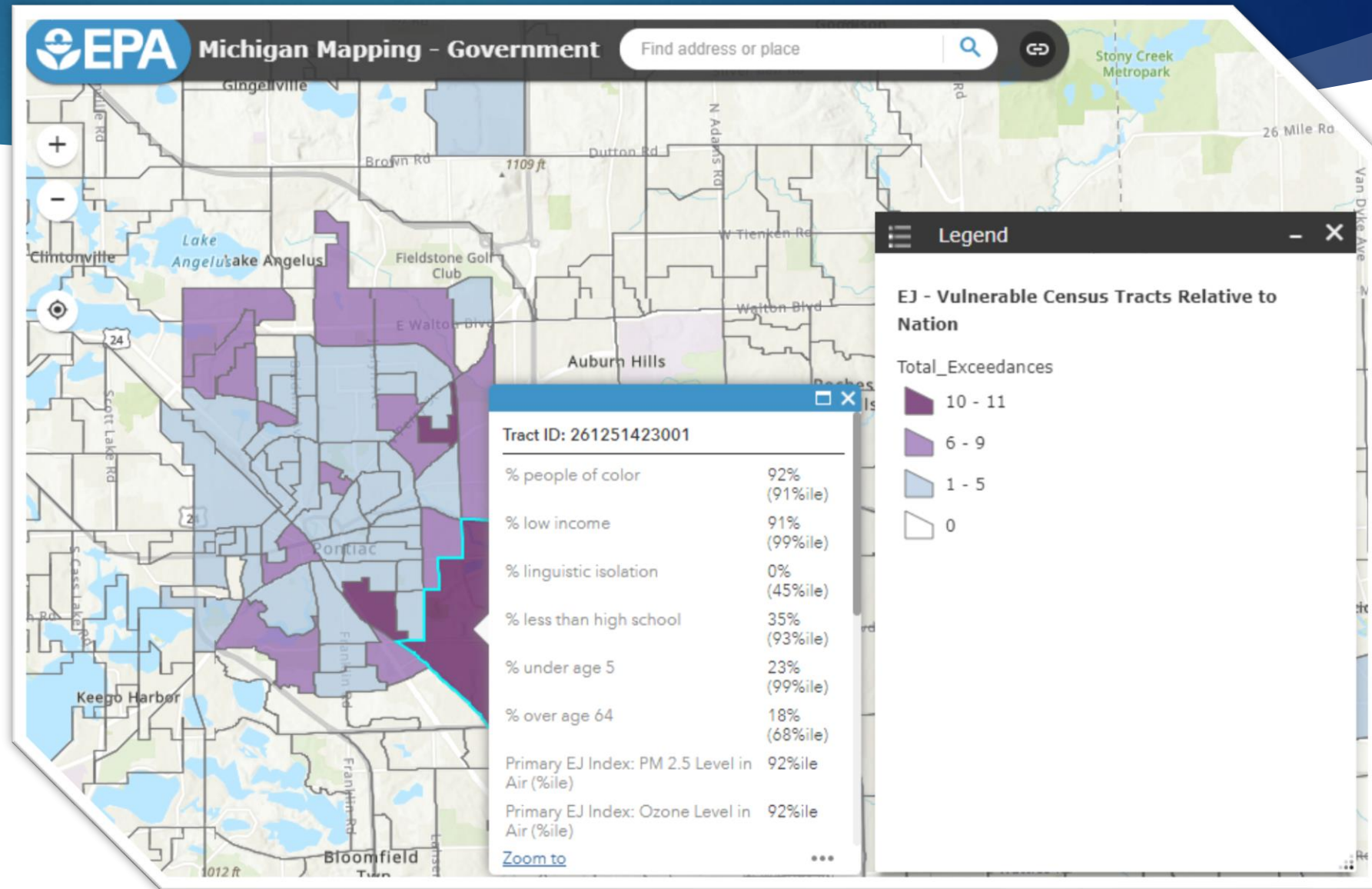
KIM CHURCHILL, EPA  
FAITH FITZPATRICK, USGS

# State Mapping Project Updates

NEW DATA LAYER!

## Environmental Justice (EJ) Data Layer

- ▶ Vulnerable Census Tracts Relative to State
- ▶ Vulnerable Census Tracts Relative to Nation



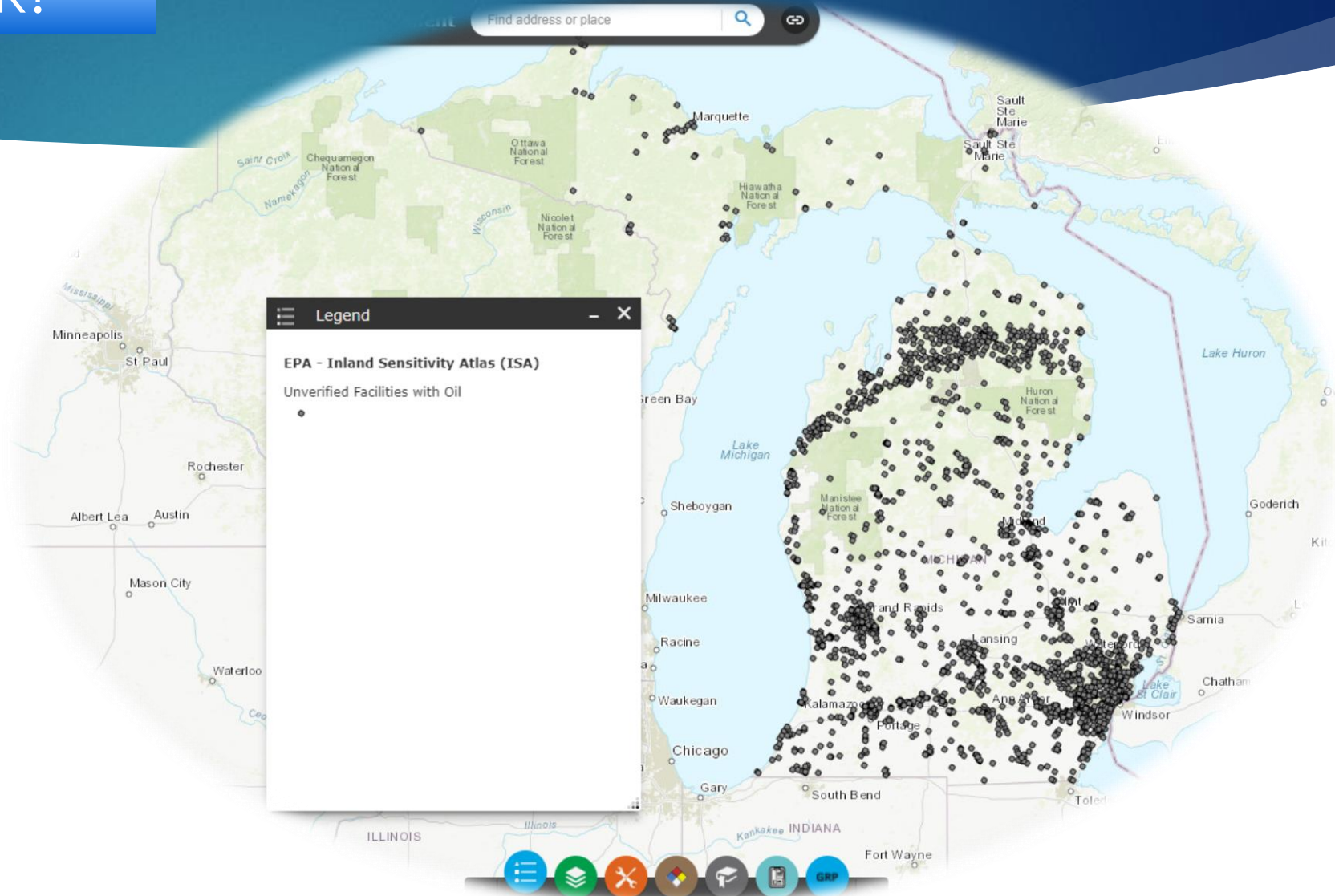


# State Mapping Project Updates

NEW DATA LAYER!

## Unverified Facilities with Oil Layer

- ▶ Facilities with less than 42,000 gallons of oil storage capacity
- ▶ Data coming from Tier II reporting data
  - ▶ No additional confirmation outside of Tier II reporting data (which is done for the AST layer)
- ▶ Updates published quarterly

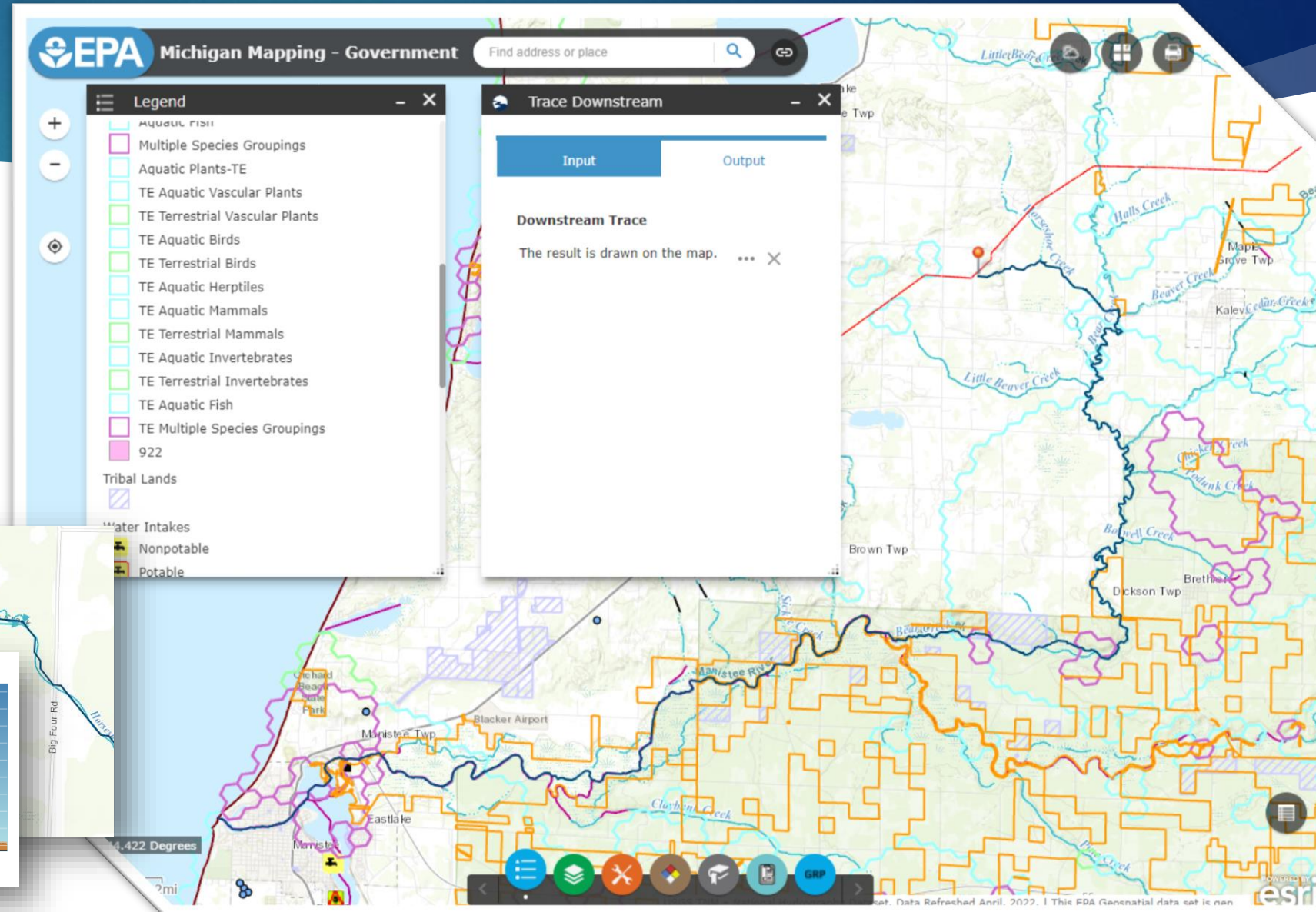
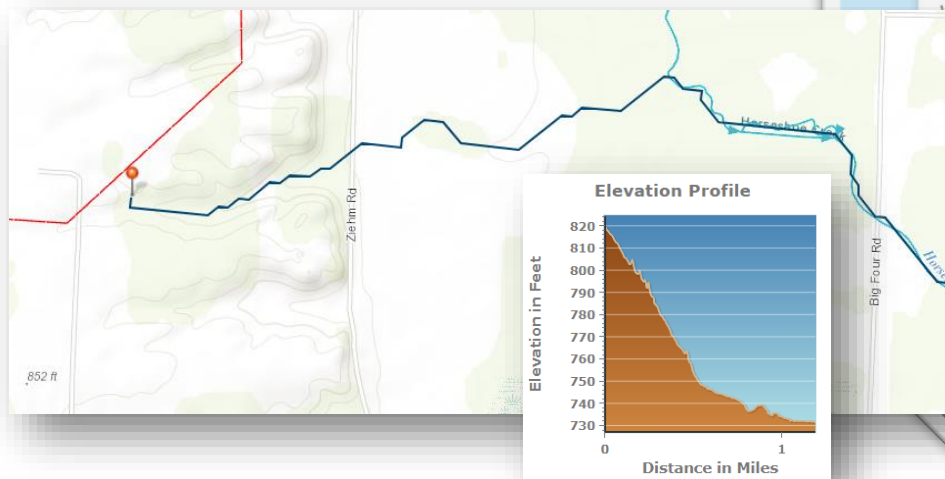


# State Mapping Project Updates

NEW WIDGET!

## Trace Downstream

- Drop a pin and get path to closest waterway and connected waterways





# USGS StreamStats

BETA RELEASE

- ▶ Time of Travel
- ▶ Spill Response
- ▶ Spill Planning

<https://streamstats.usgs.gov/tot-beta/>

USGS Time of Travel Beta release

Map Layers (+)  
Identify Area (✓)  
Scenarios (✓)

Spill Response

Time of Spill: 4/26/2022 16:19:20

Spill Mass (kilograms): Enter spill mass

Recovery Ratio (dimensionless): 1

Discharge (cubic meters per second): Enter discharge View Gages

(Mean annual flow of nearest reach: 0.22 cms)

Reaches

- 12121754
- 12121604
- 12121610
- 12121618
- 12121624
- 12121630

Clear Get Results

Zoom Level: 12  
Map Scale: 1:144,447  
Lat: 44.2201, Lon: -86.3309

Travel time not computed for overland/raindrop trace portion



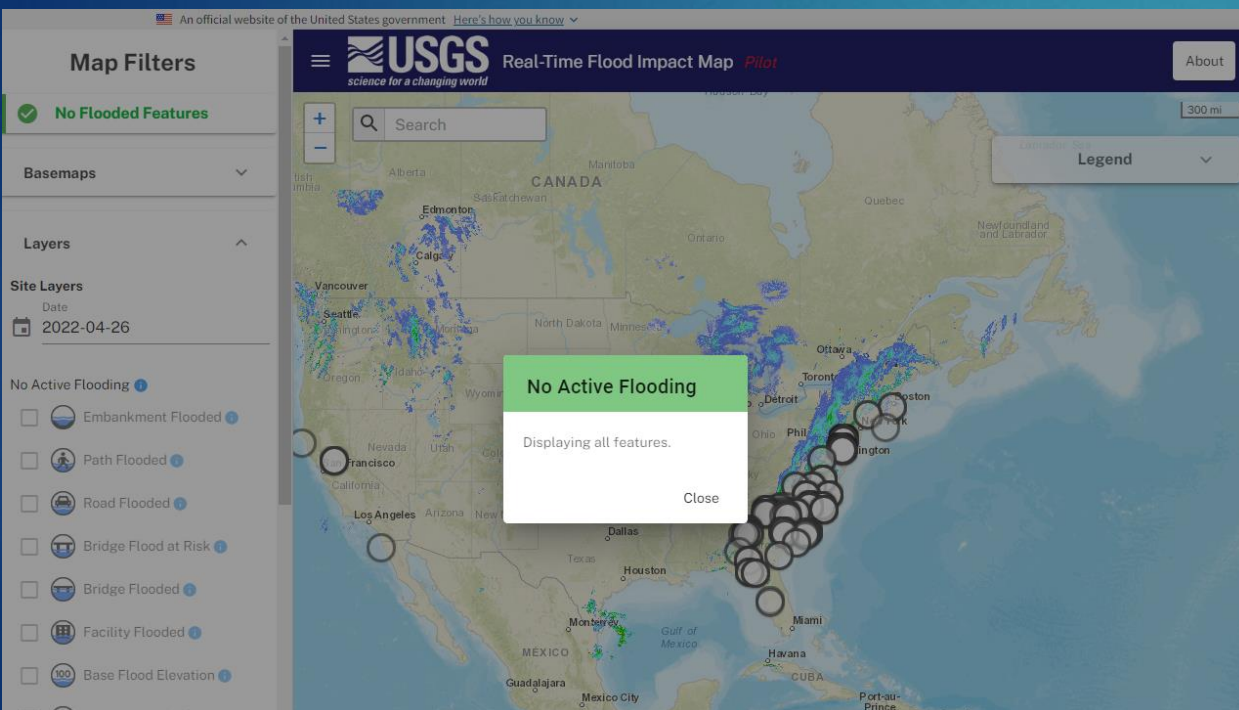
# Incident Command Tool for Protecting Drinking Water (ICWater)

Structured around the RiverSpill model which has been enhanced to make use of the 1:100,000 scale National Hydrography Dataset Plus (NHDPlus)

Front and trailing, weathering, mixing, 1st couple of days of spill

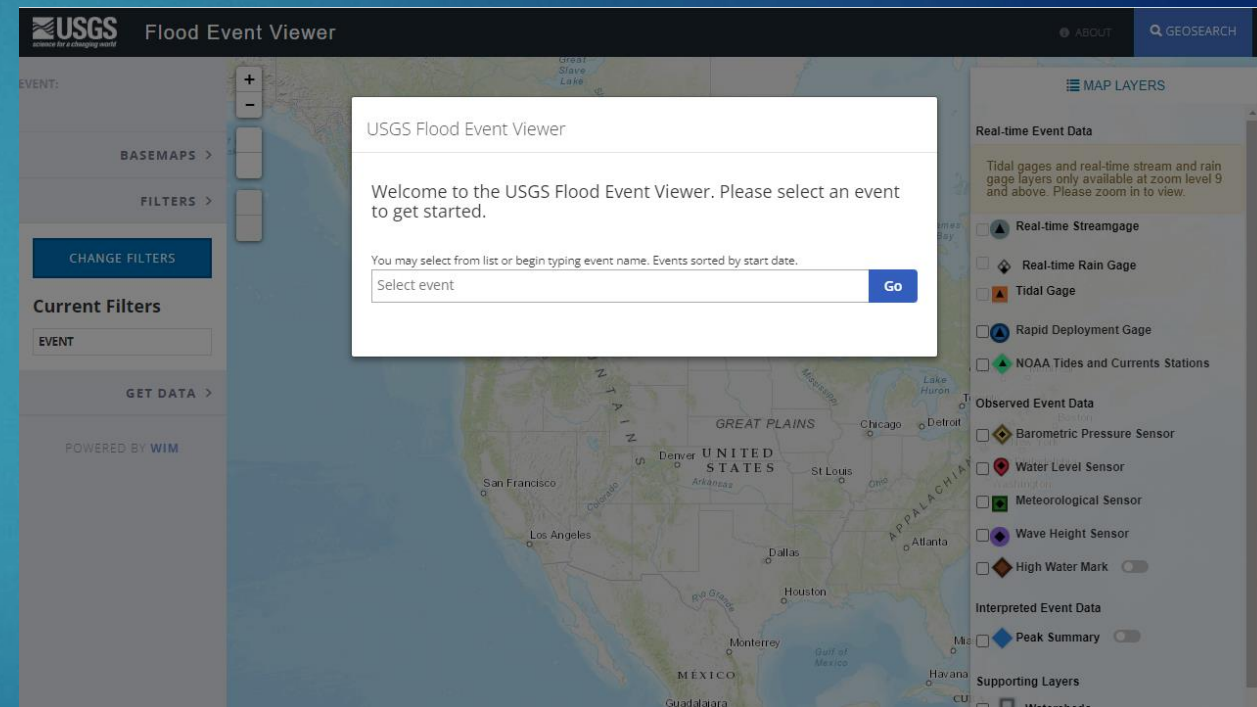
# USGS Flood Maps

## Real-Time Flood Impact Map

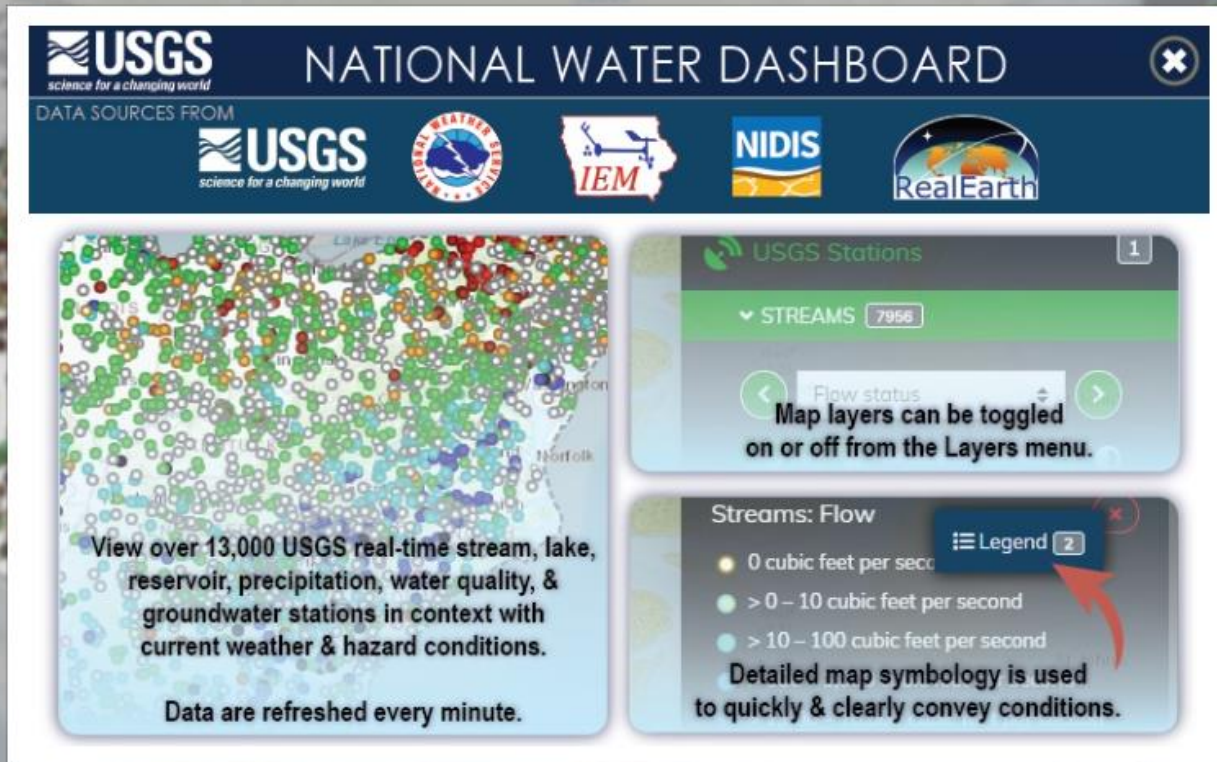


<https://test.wim.usgs.gov/thresholds/#/>

## Flood Event Viewer



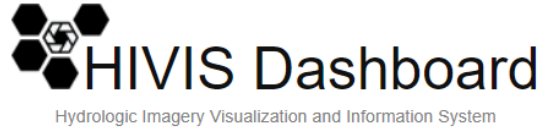
<https://stn.wim.usgs.gov/FEV/>



# USGS National Water Dashboard

<https://dashboard.waterdata.usgs.gov/app/nwd/?aoi=default>





Filter Cameras: State



There was an error fetching the cameras. Try again later.

The HIVIS project is run by the USGS Advanced Technology Group out of the Upper Midwest Water Science Center with funding from Next Generation Water Observing Systems and the NWIS Modernization Project.

Contact Joe Federer (jfederer@usgs.gov) with HIVIS processing and software questions. Contact Dave Owens (dowens@usgs.gov) with camera related questions or to join the program.

# USGS Monitoring Stations w/ Cameras

HYDROLOGIC IMAGERY  
VISUALIZATION AND  
INFORMATION SYSTEM (HIVIS)

[HTTPS://APPS.USGS.GOV/HIVIS/](https://apps.usgs.gov/hivis/)

# USGS ICE! Ice Jam Hazard Mobile-Friendly Website

- ▶ The project team worked with the US Army Corps of Engineers, National Weather Service, Silver Jackets, and USGS stakeholders to develop a mobile-friendly prototype of an Ice Jam Hazard website and reporting system.
- ▶ The prototype shows how ice jam conditions can be recorded nationwide.
- ▶ [https://www.usgs.gov/centers/cdi/science/ice-ice-jam-hazard-mobile-friendly-website?qt-science\\_center\\_objects=0#qt-science\\_center\\_objects](https://www.usgs.gov/centers/cdi/science/ice-ice-jam-hazard-mobile-friendly-website?qt-science_center_objects=0#qt-science_center_objects)

# USGS Geospatial Information Response Team (GIRT)

- ▶ The USGS established the GIRT to facilitate the effective coordination, communication, dissemination and archive of geospatial data and information during a disaster event.
- ▶ The GIRT ensures that timely geospatial data are available for use by emergency responders, land and resource managers, and for scientific analysis.
- ▶ In an emergency and response capacity, the GIRT is responsible for facilitating the coordination, communication, dissemination and archive of geospatial data and information prior to, during and after a disaster event.
- ▶ [https://www.usgs.gov/ngp-user-engagement-office/geospatial-information-response-team?qt-science\\_support\\_page\\_related\\_con=3#qt-science\\_support\\_page\\_related\\_con](https://www.usgs.gov/ngp-user-engagement-office/geospatial-information-response-team?qt-science_support_page_related_con=3#qt-science_support_page_related_con)