

Sector Sault Sainte Marie
&
Chippewa-Ottawa Resource Authority (CORA)



What is a Great Lakes Fishing Tug?



H.W. Hocks Response



What were the keys to success?



Continued Commitment



-CONTACT/PARTNERSHIP

-CAPABILITIES/LIMITATIONS



[yoopers craigslist](#) > [for sale / wanted](#) > [boats - by owner](#)

[email this posting to a friend](#)

Avoid scams and fraud by dealing locally! Beware any deal involving Western Union, Moneygram, wire transfer, cashier check, money order, shipping, escrow, or any promise of transaction protection/certification/guarantee. [More info](#)

please flag with care: [?](#)

[miscategorized](#)

[prohibited](#)

[spam/overpost](#)

[best of craigslist](#)

Fishing vessel - \$13500 (Bay Mills Point, Mi)

Date: 2012-09-05, 5:41PM EDT

Reply to this post

zs5rq-3206870379@sale.craigslist.org [\[Errors when replying to ads?\]](#)

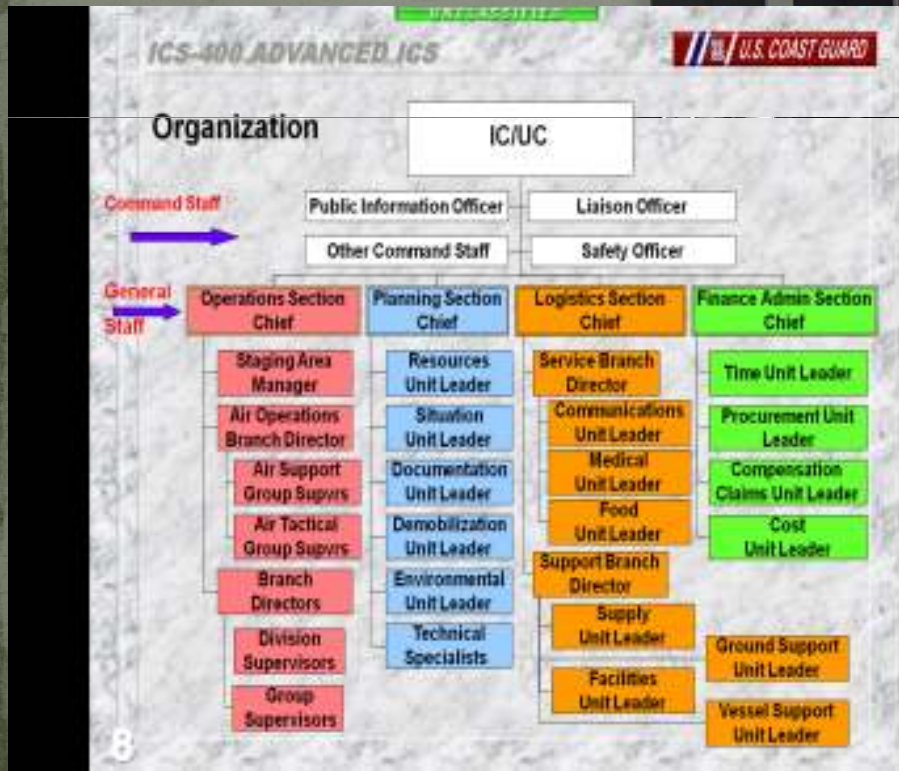
Great Lakes Commercial Fishing or Hobby Vessel, built in Milwaukee Wisconsin 1935. 48 foot x 13 foot x 6 draft. Engine: Cat D-13000 6 inline, power take off, pony motor starter, twin disk gear, 4" propeller shaft, Complete 30" Crosby Gill Net Lifter, Large Rudder, Coal or Wood Stove, Side door Steering, small propane cook stove. Has minor exterior damage to roof and port holes. Asking \$13,500.00. Price negotiable.



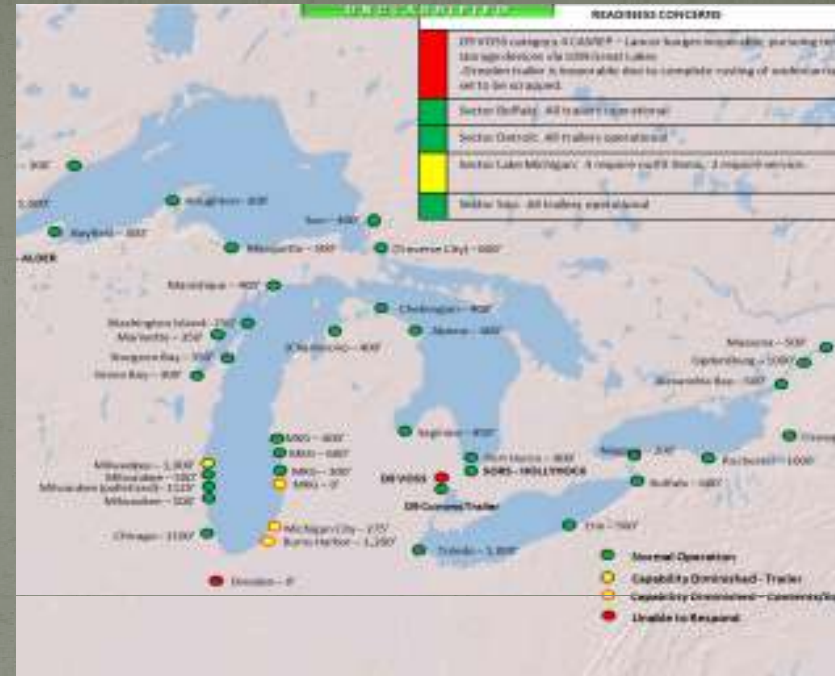
Best Response

Considerations for
FOSC's, FOSCR's, IC's





Considerations:



Continued Commitment:

