

Spring RRT5 Planning Subcommittee Meeting Report Out

APRIL 29, 2026

LED BY JOHN NELSON, RRT5 PLANNING SUBCOMMITTEE CHAIR



Agenda for 2026 Spring Planning Meeting



Planning Updates



Mapping Updates



Workgroup Updates



Special Projects



Spotlight: PFAS



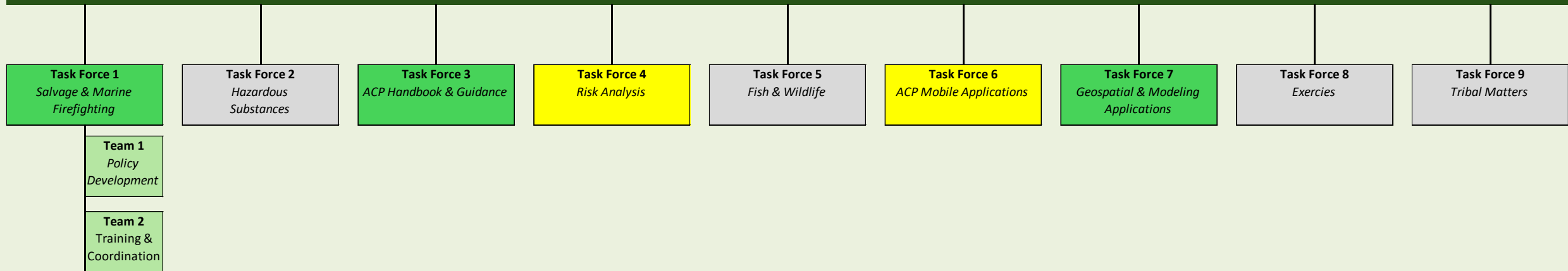
Open Forum

Planning Updates

- 2026 updates to Region 5 RCP ongoing
- All Coastal Zone ACPs are due to be in Updated ACP Architecture by October 2026
- 3 ACPs in Great Lakes due to be submitted in new format – Sector’s Lake Michigan ACP and Northern Great Lakes (NMACP), and MSU Duluth (WLS ACP)

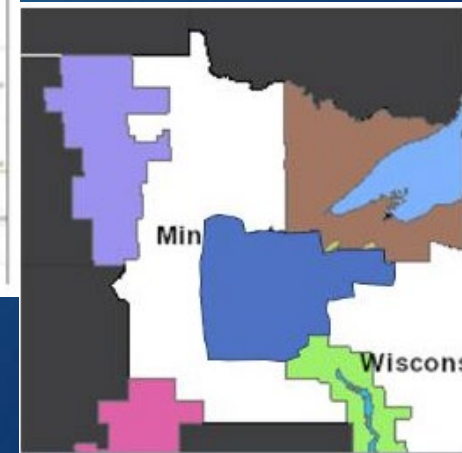
Coast Guard National Review Panel (CGNRP): ACP 5-Year Review Schedule (2023-2027)				
2023	2024	2025	2026	2027
D/NE- Sector Northern New England	D/NE - Sector Long Island Sound	D/NE - Sector Southeastern New England	D/NE - Sector Boston	D/NE - Sector New York
D/SE - Sector Charleston	D/East - Sector Delaware Bay	D/East - Sector Virginia	D/East - Sector Maryland - National Capital Region	D/East - Sector North Carolina
D/SE - Sector Jacksonville	D/SE - Sector Miami	D/SE - Sector San Juan	D/SE - Sector St. Petersburg	D/SE - Sector Key West Florida
D/Heartland - Marine Safety Unit Houma	D/Heartland - Sector Corpus Christi	D/Heartland -Marine Safety Unit Port Arthur	D/SE - Marine Safety Unit Savannah	D/Heartland - Sector Mobile
D/Great Lakes - Sector Lake Michigan	D/Great Lakes - Sector Detroit	D/Great Lakes - Sector Eastern Great Lakes	D/Heartland - Sector New Orleans	D/Heartland - Sector Houston-Galveston
D/SW - Sector San Diego	D/Oceania - Sector Honolulu	D/Arctic - Sector Western Alaska & US Arctic	D/Great Lakes - Sector Northern Great Lakes	D/Great Lakes - Marine Safety Unit Duluth
	D/SW - Sector Los Angeles - Long Beach	D/Arctic - Marine Safety Unit Valdez	D/NW - Sector Puget Sound	D/SW - Sector San Francisco
		D/Arctic- Sector Southeast Alaska	D/NW - Sector Columbia River	D/Oceania - Sector Guam
PACAREA Units	LANTAREA Units			

Coastal Area Contingency Planning Work Group (Executive Steering Team)



Proposed renaming of the “Minneapolis-St. Paul Sub-Area Plan and planning area

- Addresses additional risks to portions of the Minnesota River, Mississippi River, and St. Croix/Namekagon Rivers and tributaries not specifically covered under sub-area planning.
- Includes larger historic ceded lands of the Anishinaabe/Ojibwe and Dakota/Sioux Nations.
- Includes diverse ecoregions and landscapes but common response frameworks.
- Expands planning networks for DOT-regulated facilities.
- Addresses response areas for closest OSROs, Located in the Twin Cities.



Mapping Updates

▶ EPA Mapping Projects

- ▶ Working with UMBRA to update the EPA/EPA and EPA/USCG Boundary layer for the Ohio and Mississippi Rivers
 - ▶ Polygon vs. Line that will display jurisdiction lead for any location selected on the river. Identifies unique areas
- ▶ Working with ECCC to include a 25km line in Canada to depict the distance specified in the CANUSCENT Annex; include ECCC Sensitive Species data
- ▶ Working with START to fix the GRP Print Tool
- ▶ Collecting final input on Poweshiek Skipperling GRP; template for future critical habitat/species GRPs
- ▶ Including critical water data (wellhead and source water protect areas) in the ISA data, if available in each State

Mapping Updates

- ▶ EPA Mapping Projects, cont.
 - ▶ Continuing to work with IN, MI and OH to obtain State Critical Habitat data
 - ▶ Updated Tribal Fact Sheets for Michigan
 - ▶ Located in metadata for the Inland Sensitivity- Tribal Lands layer
 - ▶ Wisconsin and Minnesota will load with next ISA update
 - ▶ Working with USGS to get updated National Hydrography Dataset layer with direction flow lines and an updated Trace Downstream oil pathway tool
- ▶ If any user of the EPA State specific Mapping Projects finds a GIS data layer that would be of use for ERs, Planning, and Exercises, please reach out to Jon Gulch for inclusion.

Workgroup Updates

▶ Unanticipated Discovery Plan Workgroup

- ▶ Draft final version has been posted to the RRT5 website under tools:
 - ▶ [RRT5 UDP TOC April 2026.pdf](#)
- ▶ Will be shared with SHPOs and Tribes. Seeking additional comment and feedback on the document.
- ▶ Living document. Updated as needed.

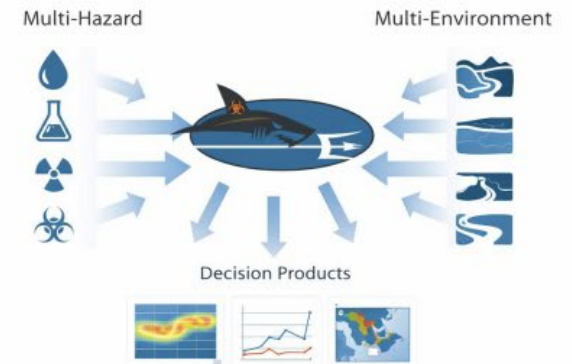
▶ Modeling Workgroup

- ▶ Fact sheet for FluOil has been drafted.
- ▶ Identified additional fact sheets for other models and tools that are commonly used:
 - ▶ StreamStats
 - ▶ ICWater – inland rivers, lakes, drinking water infrastructure
 - ▶ GNOME – coastal and ocean environments
 - ▶ Land Oil Map (Enbridge)
 - ▶ SHARC – multiple domains
 - ▶ Others?

- EPA Region 5 has a group working with IMACC to develop additional training for OSCs
- SHARC is available to OSCs for water plume modeling for emergency responses
 - Extended support will need to be funded by agency
- Presentation done at RRT5 Meeting in Minneapolis, look back for presentation

SHARC *Advanced Waterborne Hazard Modeling for Decision Support*

- Detailed Full Water Column Modeling
 - Resolves surface, subsurface and benthic impacts – not just surface plumes
- Full Spectrum Material Fate Processes
 - Tracks chemical reactions, decay and speciation over time
- Atmospheric – Water Coupling
 - Ingests deposition products atmospheric models (ALOHA, HPAC, HYSPLIT)
 - Simulates material flux to atmosphere



Predictive, time-dependent fate and transport modeling across the full water column with integrated air-water coupling



Probability mapping for unanticipated discoveries

- ▶ One of EPA R5's Inland Sensitivity Atlas map layers is Archaeological Sites because these sites are vulnerable to the effects of spills and subsequent clean-up efforts
- ▶ Because of their sensitivity, it is not practicable to provide archeological site information other than what is listed on the National Register
- ▶ DOI, GLC and Michigan SHPO partnered to develop a statewide predictive map of areas where UD's are more likely

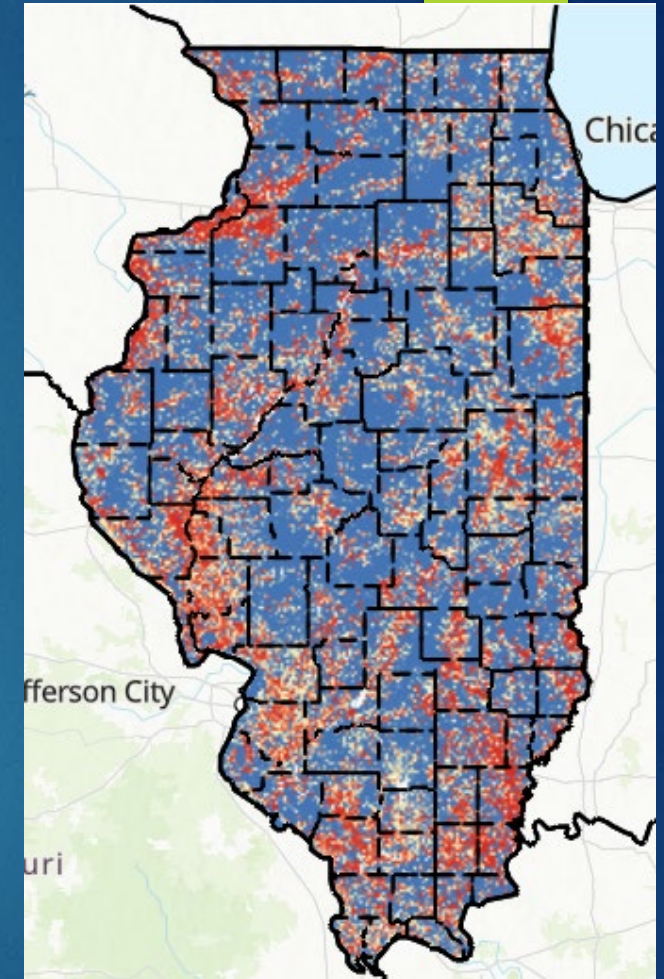
Probability mapping for unanticipated discoveries

- ▶ Factors identifying higher-probability areas for UDs
 - ▶ State Parks and Underwater Preserves
 - ▶ Islands and dune/beach areas
 - ▶ Buffer areas around major rivers and lakes
 - ▶ General areas that are known traditional cultural landscapes (ex: Mackinac Island)
 - ▶ Generalized coastal archaeological site locations from the NOAA ESI maps



Probability mapping for unanticipated discoveries

- ▶ Layer also includes updated Michigan SHPO contact information
- ▶ Intended to provide early guidance; planners and responders are strongly urged to consult with the historic preservation agency staff located in their state(s)
- ▶ Approach could be extended to other states
- ▶ Illinois has a similar map developed by the Illinois State Archaeological Survey that has served as an example for the MI layer



Illinois Archaeological
Predictive Model

Planning Spotlight: PFAS

- ▶ Interim Guidance on the Destruction and Disposal of Perfluoroalkyl and Polyfluoroalkyl Substances (PFAS) and Materials Containing Perfluoroalkyl and Polyfluoroalkyl Substances
 - ▶ Published for public comment on April 20, 2026
 - ▶ Identifies available, effective methods to remediate, dispose of and destroy PFAS contamination
 - ▶ Provide information on the current state of science and associated uncertainties for three large-scale capacity technologies that destroy or control PFAS release into the environment:
 - ▶ Thermal destruction
 - ▶ Landfills
 - ▶ Underground injection
- ▶ Link to Interim Guidance: <https://www.epa.gov/pfas/interim-guidance-destruction-and-disposal-pfas-and-materials-containing-pfas>
- ▶ Department of War also published their 2026 PFAS disposal guide