



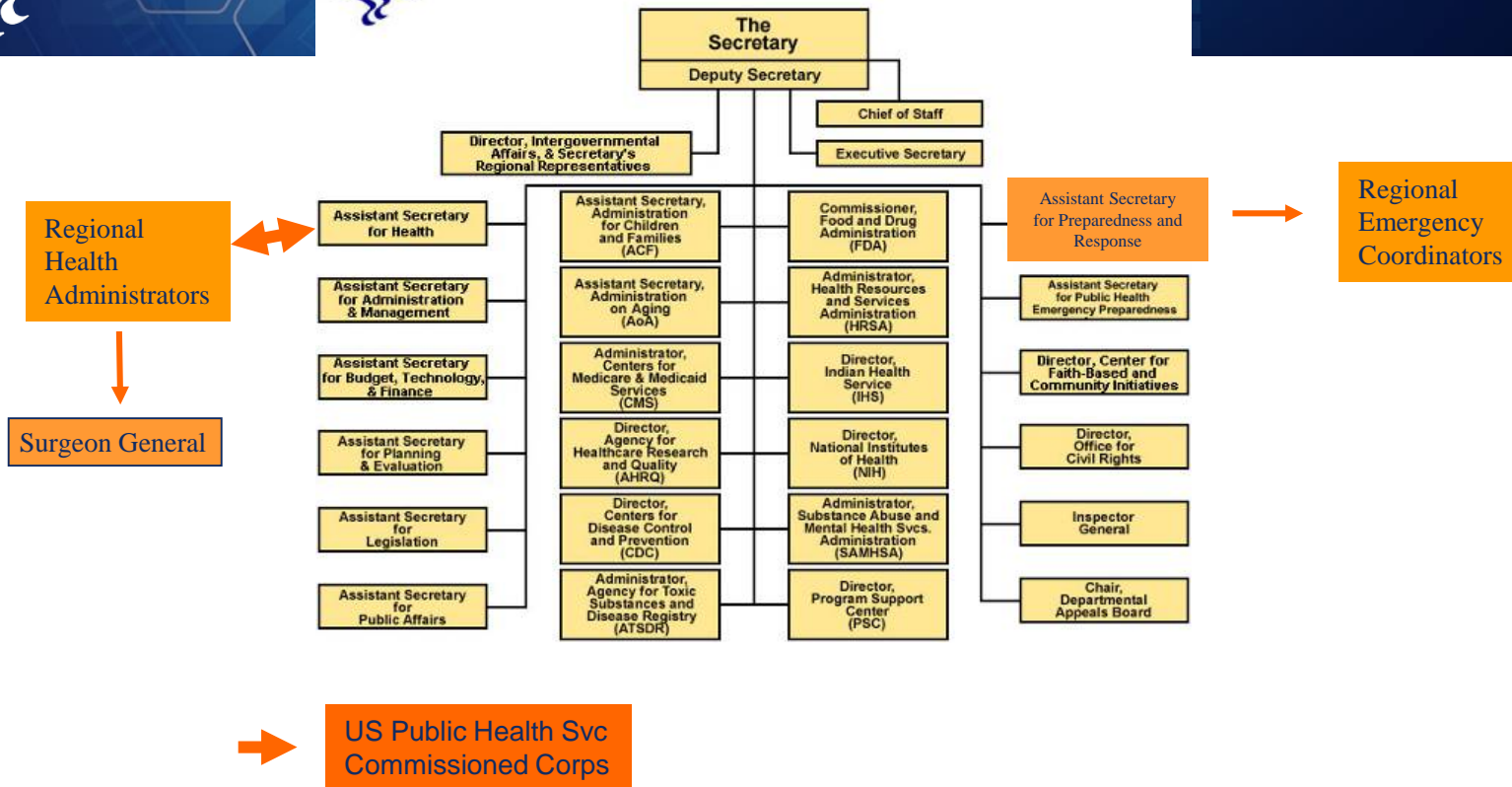
**ASPR**

**COVID-19 Response**  
**HHS/ASPR Perspective**  
Regional Response Team (RRT) meeting  
April 29, 2020

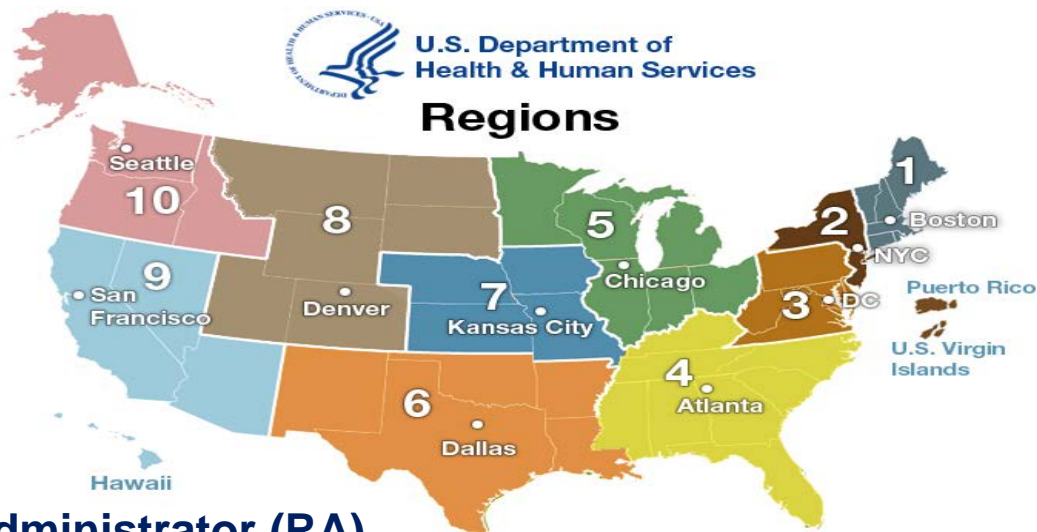
**Todd Stankewicz**  
Regional Emergency Coordinator - Region 5



# ASPR



# ASPR Regional Offices



- **Regional Administrator (RA)**
- **Regional Emergency Coordinators (RECs)**
- **National Hospital Preparedness Program (HPP) Field Project Officer (FPO)**
- **Medical Reserve Corps Regional Liaison**

<https://www.phe.gov/Preparedness/responders/rec/Pages/default.aspx>

# Regional Emergency Coordinators (RECs)

- ASPR representative in the regions
- Present in every federal region across the country
- Work with the state and local authorities, and federal partners to plan, prepare, and respond to disasters, emergencies, and special events
- Lead response activities in the affected region of the emergency and support recovery efforts

# What Can We Bring to the Fight?

## HHS Response Assets Support Local/State Needs

### National Disaster Medical System: 5000+ Total Personnel

- **Disaster Medical Assistance Teams**
  - 57 Teams and 3700 Personnel
- **Disaster Mortuary Operational Response Teams**
  - 10 teams and 780 Personnel
- **National Veterinary Response Teams**
  - 1 Team and 120 Personnel
- **Additional 600 NDMS Personnel are in Additional Teams as needed**



### US Public Health Service (USPHS) Commissioned Corps

- **Rapid Deployment Force Team**
- **Behavioral/Mental Health Team**

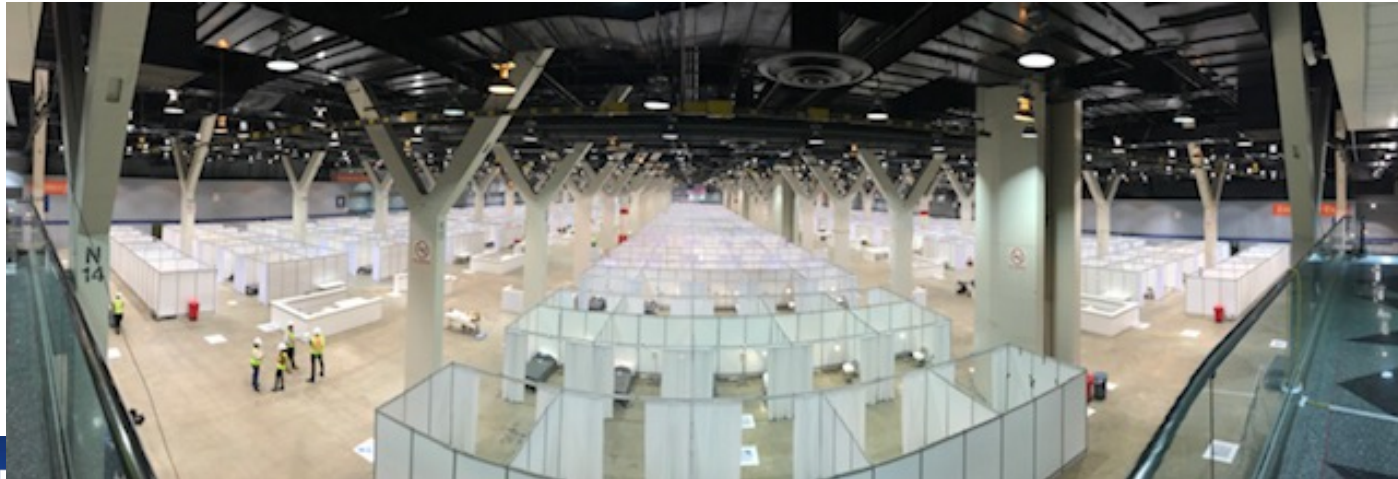
### Medical Reserve Corps

- **National network of local groups of volunteers (over 200,000 volunteers) supporting local health**
- **Respond to community health needs**



# Federal Medical Stations (FMS)

- 250 bed (cot) mobile healthcare facilities:
  - Low-acuity patients
  - Hospital or nursing home decompression
  - Used for Alternate Care Sites



# Strategic National Stockpile

- SNS ready to respond to a national public health emergency,
- State & local agencies exercise receipt and distribution of SNS resources
- SNS contains over \$7 billion in medicines and supplies
- Threat/vulnerability-based formulary based on current scientific evidence



# Battelle CCDS™ Process

## HEALTH CARE PROVIDER SIGN-UP PROCESS Battelle CCDS Critical Care Decontamination System™



### 1 Sign up with Battelle

- Visit [battelle.org/decon](http://battelle.org/decon) to fill out the enrollment form
- Battelle emails enrollee links to the enrollment contract, instructions, and the Battelle POC

[battelle.org/decon](http://battelle.org/decon)



### 2 Contact Us to Get Your Code

- Enrollee signs contract and contacts Battelle POC to receive their 3-digit codes for each facility



### 3 Properly Label Respirators

- Once the 3-digit codes are received from Battelle, enrollee collects N95 respirators
- N95 respirators must be unsoiled (free of blood, mucus, make-up, lip balm, etc.) and labeled with a permanent marker



### 4 Collect & Bag All N95 Respirators

- Enrollee collects all N95 respirators into a single plastic bag
- Once the plastic bag is filled, tie off the bag and put it into another plastic bag



### 5 Properly Package

- Clean the outside bag with disinfectant
- Shipping box must be labeled with the 3-digit code and a biohazard sticker



### 6 Ship to CCDS Site

- Enrollee contacts their chosen logistics provider to coordinate pick-up and delivery of their N95 respirators
- Enrollee can either use a logistics provider of their choice or Battelle's preferred logistics provider



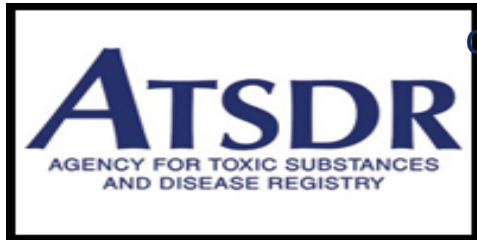
### 7 Decontaminated & Returned

- Your shipments are barcoded to ensure chain of custody
- Your N95 respirators are processed and then verified to ensure they are free of decontaminant
- Your decontaminated N95 respirators are returned to your facility





# Select HHS Partners/Resources



# CDC Resources

## **General public health recommendations:**

<https://www.cdc.gov/coronavirus/2019-ncov/php/public-health-recommendations.html>

## **This link is for employers guidance:**

<https://www.cdc.gov/coronavirus/2019-ncov/community/organizations/businesses-employers.html>

## **This is a link with general business guidance:**

<https://www.cdc.gov/coronavirus/2019-ncov/community/general-business-faq.html>

## **CDC cleaning and disinfection recommendations:**

Clean dirty surfaces with soap and water before disinfecting them.

To disinfect surfaces, use [products that meet EPA criteria for use against SARS-Cov-2](#)<sup>external icon</sup>[external icon](#), the virus that causes COVID-19, and are appropriate for the surface.

Always wear gloves and gowns appropriate for the chemicals being used when you are cleaning and disinfecting.

You may need to wear additional personal protective equipment (PPE) depending on the setting and disinfectant product you are using.

In addition to cleaning and disinfecting, employers should determine which employees may have been exposed to the virus and need to take additional precautions:

<https://www.cdc.gov/coronavirus/2019-ncov/community/organizations/cleaning-disinfection.html>

## **Public Health Recommendations for Community-Related Exposure.**

<https://www.cdc.gov/coronavirus/2019-ncov/php/public-health-recommendations.html>

# Questions

## Contact Information:

CAPT Todd Stankewicz  
Regional Emergency Coordinator – Region 5  
[todd.Stankewicz@hhs.gov](mailto:todd.Stankewicz@hhs.gov)  
312-952-2218