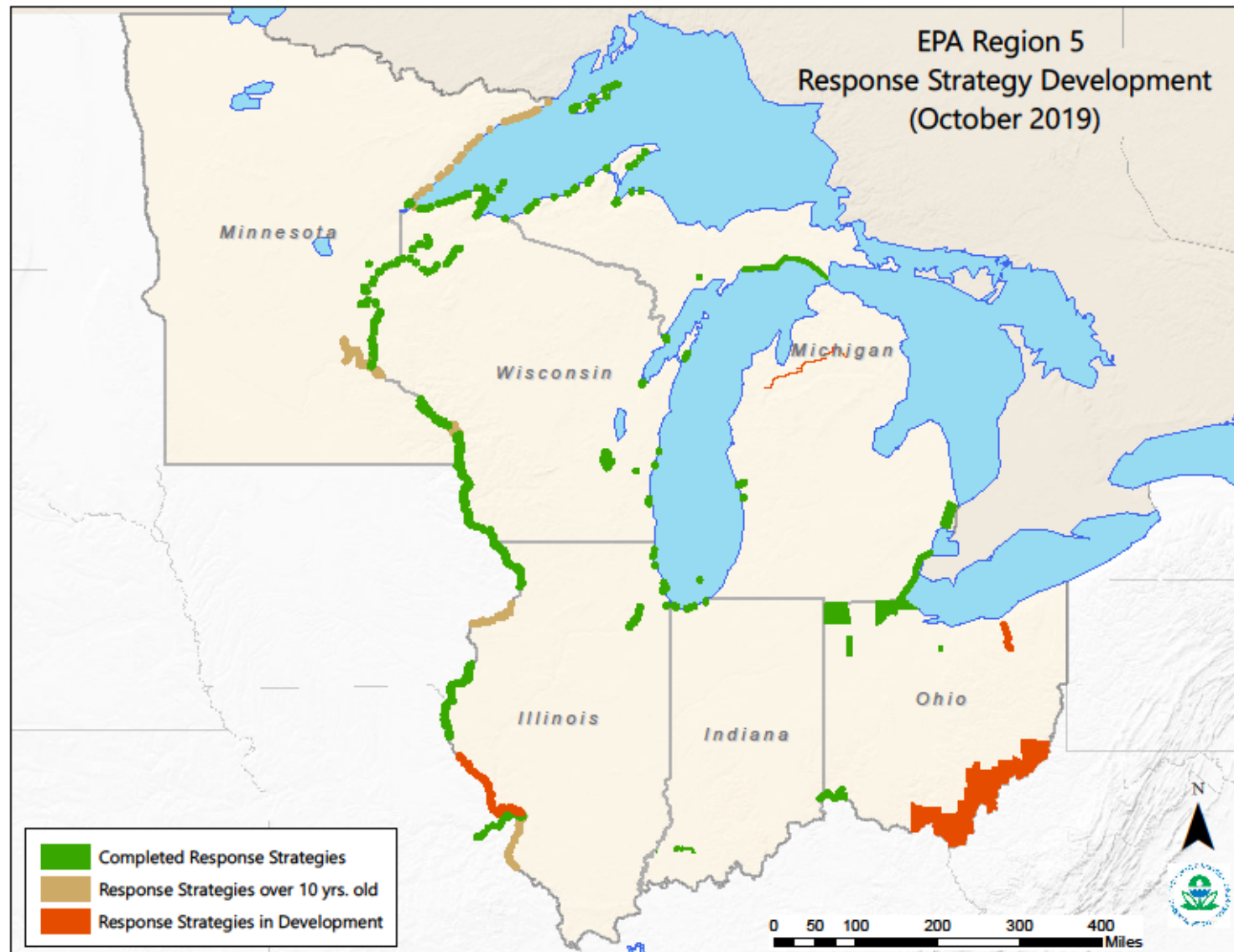


# UMRBA PLANNING UPDATES

## Fall 2019 RRT 5 Meeting





Upper Mississippi  
River Basin  
Association

# **Pool 7 Response Planning Map 10**

0 0.125 0.25 Miles  
July 2009  
Scale 1:20,000



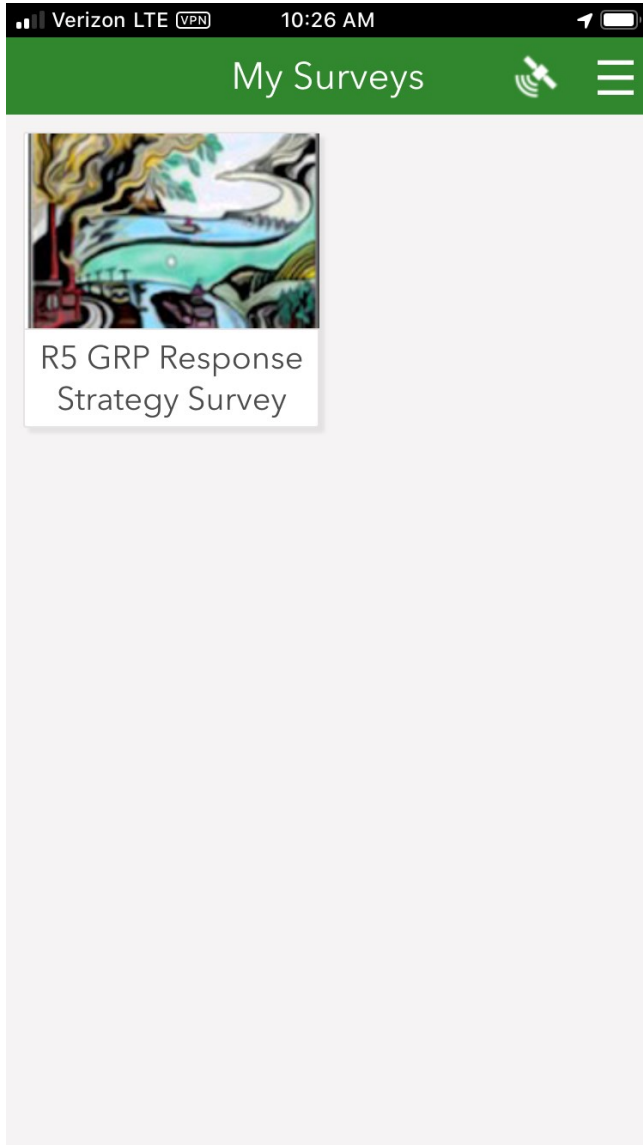
# Survey123 for ArcGIS

---

Survey123 for ArcGIS is a simple and intuitive form-centric data gathering solution. Create, share and analyze surveys in just three easy steps.

[Learn more about Survey123](#)





This screenshot shows the 'R5 GRP Response Strategy Survey' form interface. The status bar at the top indicates 'Verizon LTE', 'VPN', and the time '10:25 AM'. The app's header is green with a close button (X), the title 'R5 GRP Response Strategy Survey', and icons for signal strength and a menu. The form is titled 'Select Survey Type \*' and has a dropdown menu set to 'Response Data Sheet'. Below this, there is a section titled 'Physical Location Information' with a dropdown arrow. The form includes several input fields: 'Location Name:', 'City/Township/Village:', 'State:' (with a dropdown arrow), 'County:', 'Property Type:' (with a dropdown arrow), and 'Fire District:'. A green bar at the bottom right contains a white checkmark icon, indicating a successful submission or completion.

# ***GEOGRAPHIC RESPONSE PLAN***

## ***UPPER MISSISSIPPI RIVER - POOL 7***

**Pool Overview**

Pool geographic and resource description and overview of response considerations

**Maps**

Spill Response Strategies, Maps, Tables and Data

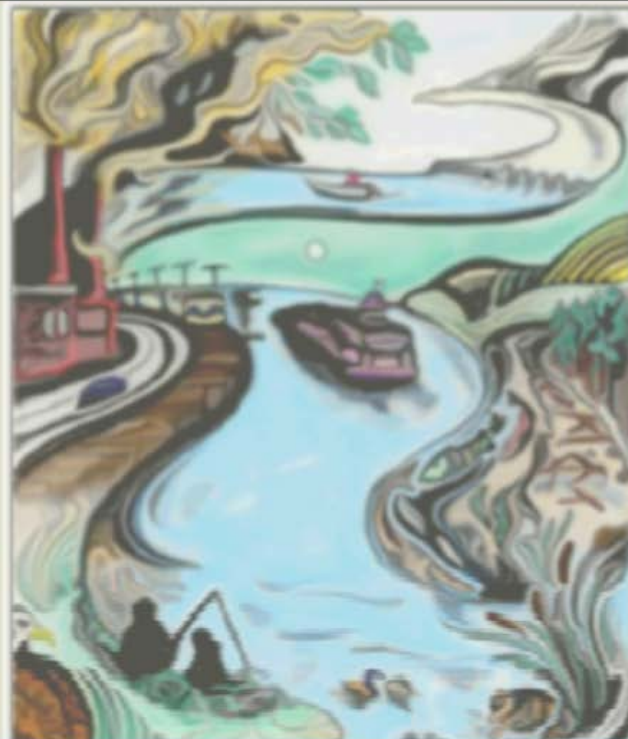
Open Maps section

**Plans**

Initial Incident Action Plan and Related Planning Documents

**Emergency Contacts**

Key Emergency Phone Numbers



**MAIN**

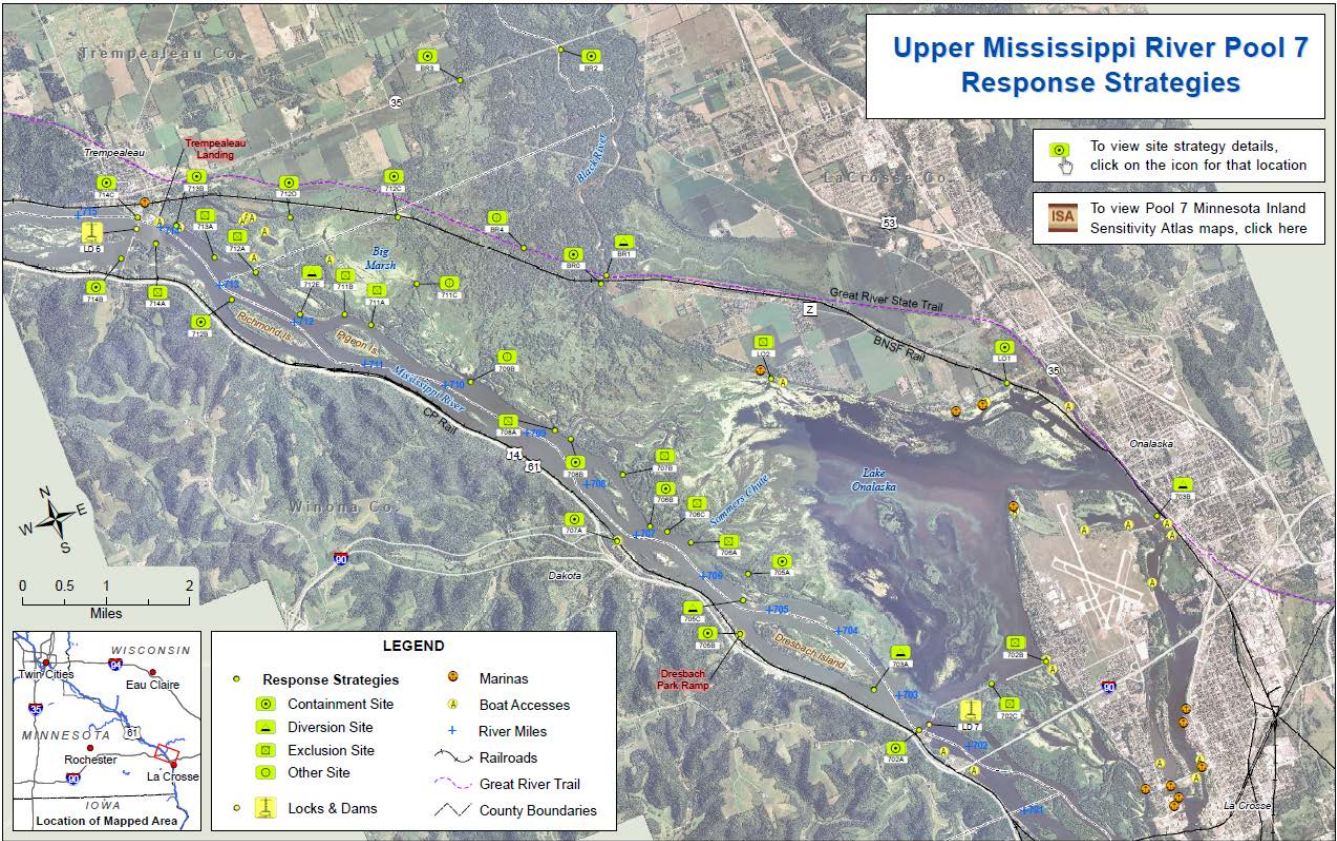


**Help**

**Exit**

UPPER MISSISSIPPI RIVER POOL 7

INITIAL INCIDENT ACTION PLAN (IAP)



*This Initial Incident Action Plan is developed to aid in initiating a timely and effective response to spills of oil and other hazardous materials in Pool 7 of the Upper Mississippi River. It is intended to be used during Operational Period #1 of response only at the discretion of the Incident Commander. It is not intended to supersede the direction of the Incident Commander or eliminate the need for ongoing communication during a response.*

| IAP Approved by Incident Commander(s): |      |   |           |
|--|------|---|-----------|
| ORG                                    | NAME |   | DATE/TIME |
|  |      | First Local IC (911, Fire Dept., County Emergency Mgr.)         |           |
|  |      | First Responding State (MPCA or WI DNR)                         |           |
|  |      | FOSC; USCG (Vessel or facility), EPA (facility, train or other) |           |
|  |      | USFWS Lead Representative                                       |           |
|  |      | MIN DNR /WI DNR Lead Representative                             |           |

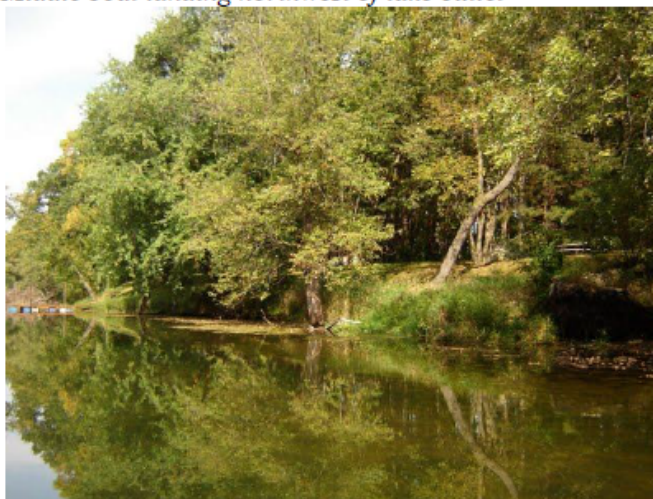


**GOAL: Contain and collect product in the event of a spill between Trempealeau and Tank Creek.**

| Site Number  | Waterbody, River Mile | Site Name  |             |
|--|-----------------------|--|-------------|
| 712d   | Trempealeau Lakes     | Outlet to Round Lake                                     |             |
| Strategy Type*   | Boom Length (ft)      | Land Access  | Boat Access |
| C&C  | 100                   | N  | N           |
| Strategy Implementation ( <a href="#">Go to Aerial View</a> )  |                       |  |             |
| <p>Into 2nd and 3rd lake, jurisdiction changes to state. May be easier to collect, but is more wooded and wider (200 ft). Very slow current, 100 ft width at private land.</p>   |                       |  |             |
| Site Access  |                       |  |             |
| <p>Lake outlet flowing into Round and Mud Lakes. Land access through mown lawn on private property. Boat access at middle landing on lake. Road around lake blocked by locked WI DNR gate. Access from south may require airboat due to shallow areas.</p> |                       |  |             |
| <b>UTM z15 Y:</b> 4872013<br><b>Latitude:</b> 43.990107  |                       | <b>UTM z15 X:</b> 628030<br><b>Longitude:</b> -91.403377 |             |



*Middle boat landing northwest of lake outlet*



*Private property access for collection*

# UMR Spill Response and Resource Plan Pool GRPs & IAPs

Available at [RRT5.org](http://RRT5.org)

Andy Maguire - R5 OSC

Barbi Lee - R5 Planner

