

WEST SHORE PIPELINE RELEASE JACKSON, WISCONSIN



Steve Faryan, U.S. EPA On-Scene Coordinator
312-353-9351
Faryan.Steven@epa.gov

WEST SHORE PIPELINE RELEASE

- ✖ Reported to NRC on July 18, 2012
- ✖ 1,000 barrels of gasoline reported released from 10 inch pipeline
- ✖ Pipeline shut down due to pressure drop
- ✖ West Shore Pipeline (Buckeye Partners) mobilized Incident Command Team set up command post at terminal north side of Milwaukee

WEST SHORE PIPELINE RELEASE

- ✖ Opened Federal Project number (FPN). U.S. EPA and Weston Solutions respond to release
- ✖ WNDR responder Scott Ferguson on scene
- ✖ Incident Management Team from West Shore at command post.
- ✖ Incident Action Plan with Incident Objectives established for next operational period
- ✖ No gasoline observed in surface waters or nearby creek

CONDUCTING AIR MONITORING IN WORK ZONE AND IN COMMUNITY



SOIL EXCAVATION NO PRODUCT OBSERVED



WEST SHORE PIPELINE RELEASE



PIPELINE REPAIR



PIPELINE REPAIR



WELL INSTALLATION AND GROUND WATER MONITORING WELLS



10 INCH PIPELINE LIES ON TOP OF BEDROCK



AIR MONITORING TABLES AND REPORTING



40336 - Buckeye Partners, Jackson, WI
Granville North Release

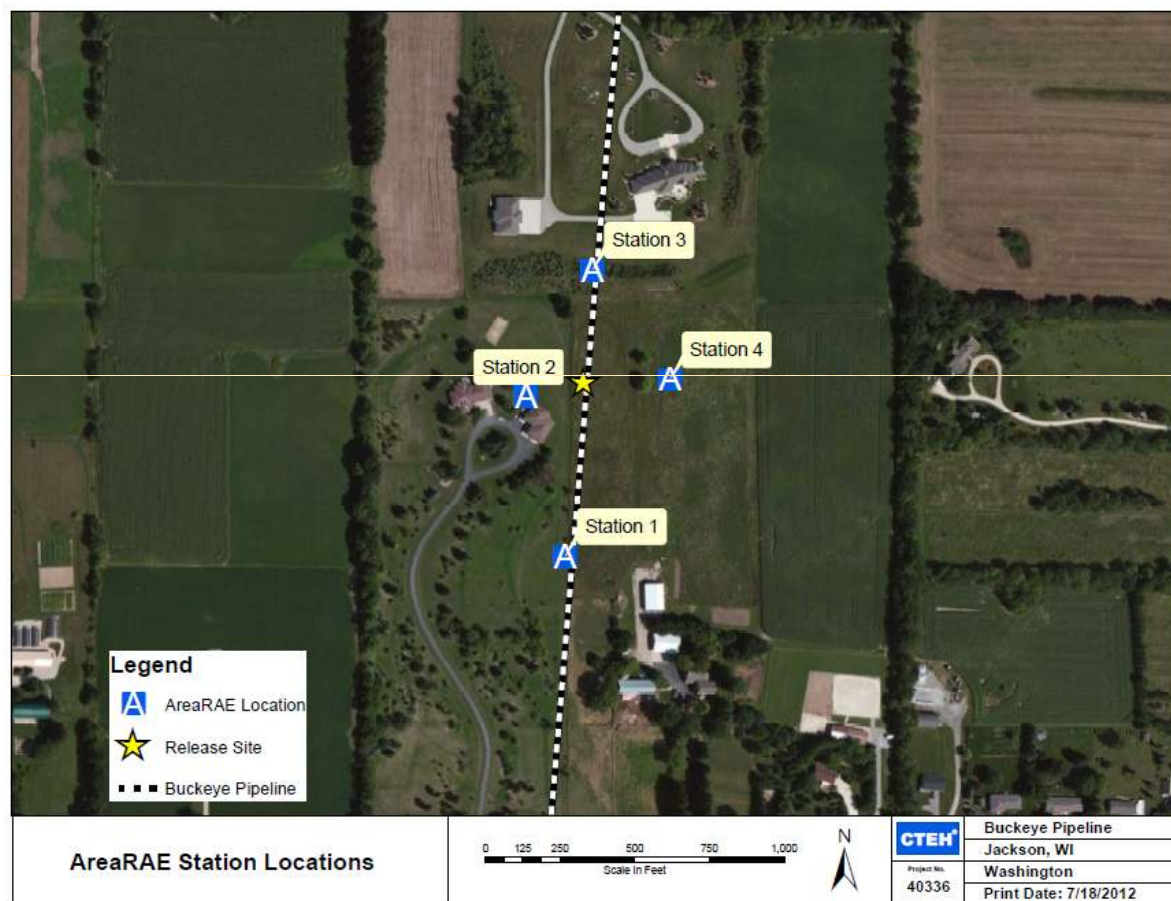
Summary of Real-Time Air Monitoring Results - July 19, 2012

Community					
Analyte	Instrument	Number of Readings	Number of Detections	Minimum Value	Maximum Value
Benzene (ppm)	UltraRAE	11	5	0.1	1.5
LEL (%)	MultiRAE	18	0	NA	NA
O2 (%)	MultiRAE	1	1	20.9	20.9
VOC (ppm)	MultiRAE	36	13	0.1	57.2
Benzene (ppm)	MultiRAE	1	1	0.1	0.1
Community-Fixed Station					
Analyte	Instrument	Number of Readings	Number of Detections	Minimum Value	Maximum Value
VOC (ppm)	MultiRAE	113	11	0.1	0.2
Benzene (ppm)	UltraRAE	5	0	NA	NA
LEL (%)	MultiRAE	115	0	NA	NA
Pipeline Right-of-Way					
Analyte	Instrument	Number of Readings	Number of Detections	Minimum Value	Maximum Value
CO (ppm)	Gastec	1	0	NA	NA
LEL (%)	MultiRAE	3	0	NA	NA
VOC (ppm)	MultiRAE	16	10	0.1	35.1
Benzene (ppm)	UltraRAE	20	7	0.1	2.4
Source					
Analyte	Instrument	Number of Readings	Number of Detections	Minimum Value	Maximum Value
VOC (ppm)	MultiRAE	12	12	3.0	444.0
Benzene (ppm)	UltraRAE	25	14	0.1	1.7
CO (ppm)	Gastec	9	0	NA	NA
LEL (%)	MultiRAE	13	4	5.0	15.0
LEL (ppm)	MultiRAE	2	0	NA	NA

ppm - parts per million
ppb - parts per billion
NA - not applicable



AIR MONITORING



PERIMETER AIR MONITORING



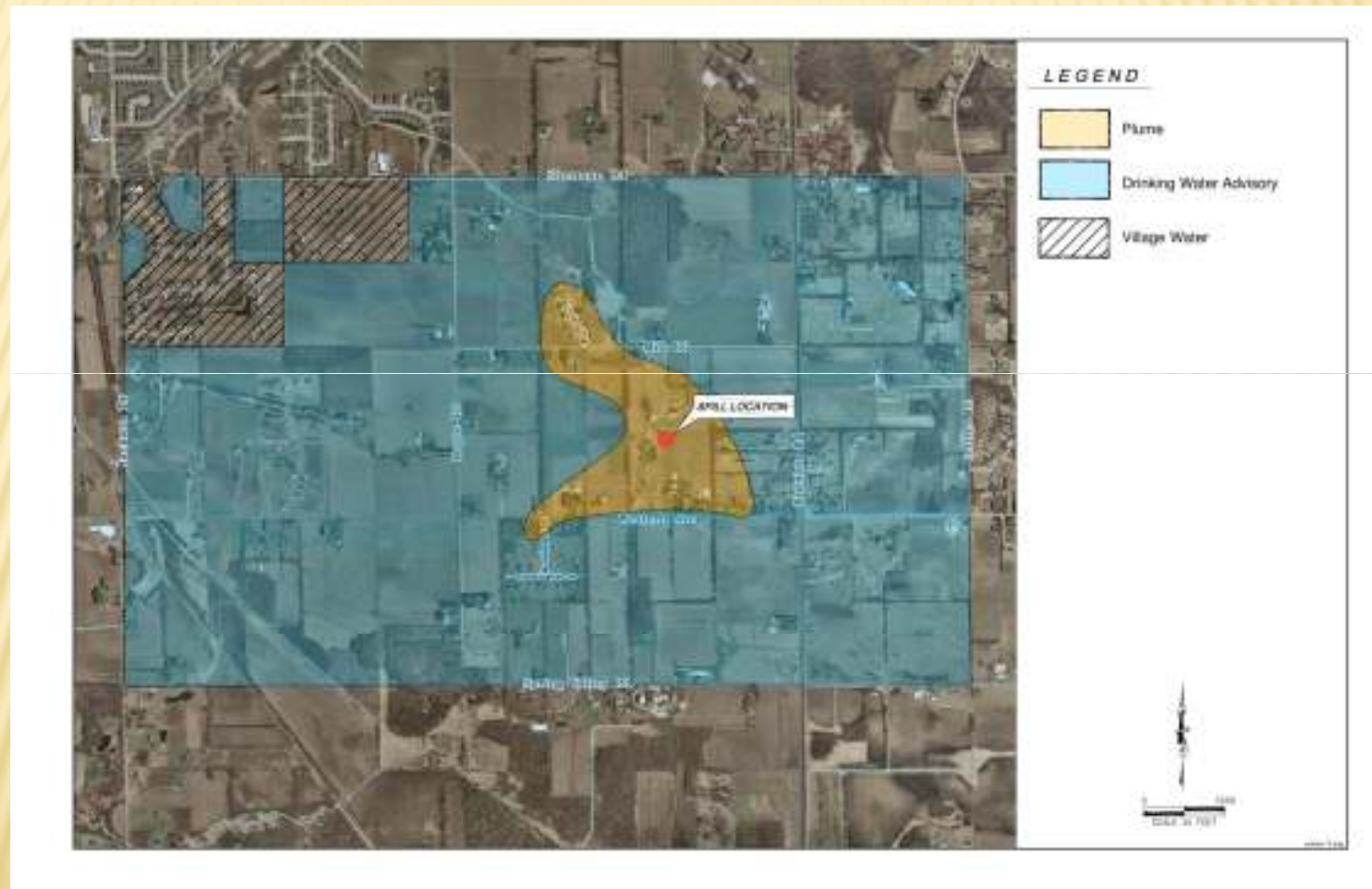
AIR MONITORING IN COMMUNITY



TRANSITION FROM EMERGENCY TO GROUND WATER MONITORING/CLEAN-UP

- ✖ U.S. EPA on-scene coordinator transitions from Emergency Phase of incident, OSC Micke departs July 22, 2012
- ✖ WDNR Scott Ferguson WDNR Milwaukee Responder and Ground water Section of WDNR ground water section Zoe McManama continue to lead monitoring/cleanup efforts
- ✖ 296 wells sampled
- ✖ 14 with benzene; 11 above the MCL
- ✖ 70 homes with filter systems
- ✖ 83 ground water recovery (remediation) wells installed

GROUND WATER PLUME



WEST SHORE PIPELINE RELEASE

- ✗ Websites set up to update residents

<http://www.jacksonwisconsinresponse.com/>

QUESTIONS / COMMENTS

- ✕ Faryan.Steven@epa.gov
- ✕ Micke.Fredrick@epa.gov