

LIST OF FIGURES

Figure 1. The Pre-Spill Planning Process (Appendix A of the MOA)

Figure 2. Spill Response Procedures (Appendix A of the MOA)

Figure 3. Overview of the Action Area in Illinois

Figure 4. Overview of the Action Area in Indiana

Figure 5. Overview of the Action Area in Michigan

Figure 6. Overview of the Action Area in Minnesota

Figure 7. Overview of the Action Area in Ohio

Figure 8. Overview of the Action Area in Wisconsin

Figure 9. Critical Habitat in the Action Area Short's Bladderpod (Endangered) – Indiana

Figure 10. Critical Habitat in the Action Area Rabbitsfoot (Threatened) – Illinois, Indiana, Ohio

Figure 11. Critical Habitat in the Action Area Dakota Skipper (Threatened) – Minnesota

Figure 12. Critical Habitat in the Action Area Hine's Emerald Dragonfly (Endangered) – Illinois, Michigan, Wisconsin

Figure 13. Critical Habitat in the Action Area Poweshiek Skipperling (Endangered) – Michigan, Minnesota, Wisconsin

Figure 14. Critical Habitat in the Action Area Topeka Shiner (Endangered) – Minnesota

Figure 15. Critical Habitat in the Action Area Canada Lynx (Threatened) – Minnesota

Figure 16. Critical Habitat in the Action Area Indiana Bat (Endangered) – Indiana, Illinois, Michigan, Ohio

Figure 17. Critical Habitat in the Action Area Piping Plover, Great Lakes Population and Northern Great Plains Breeding Population (Endangered) – Illinois, Indiana, Michigan, Minnesota, Ohio, Wisconsin

Figure 1. The Pre-Spill Planning Process (Appendix A of the MOA)

PRE-SPILL PLANNING

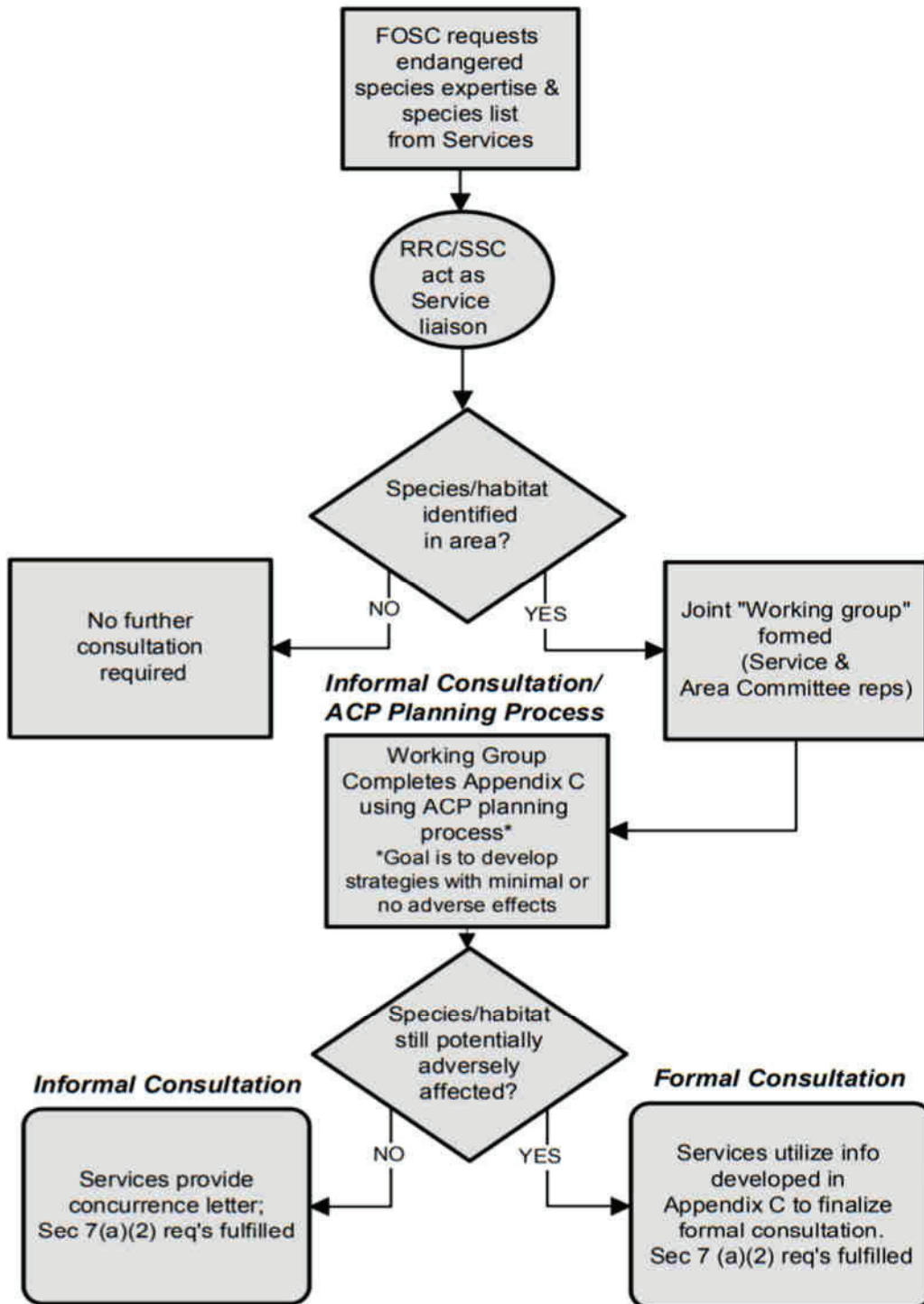
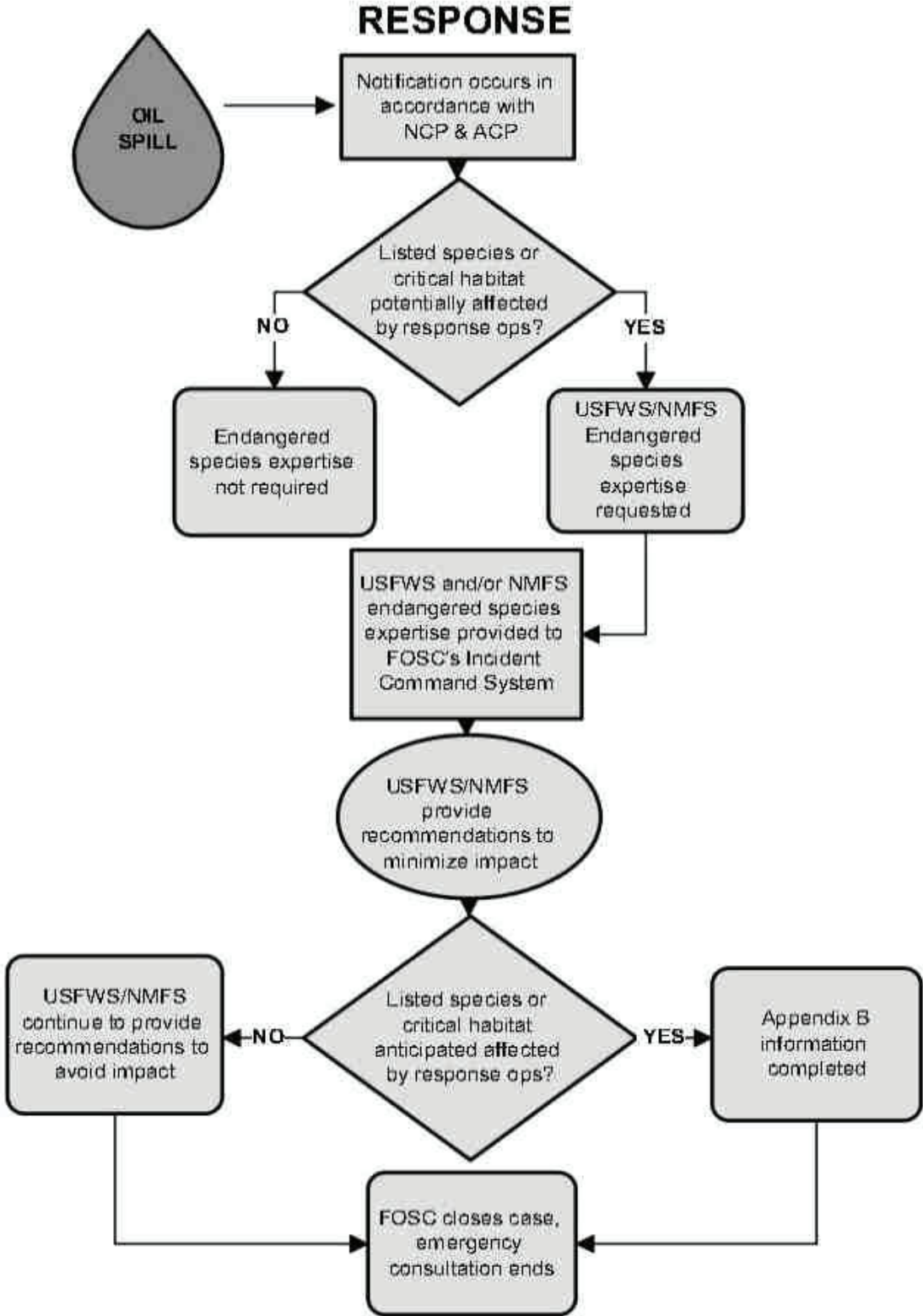
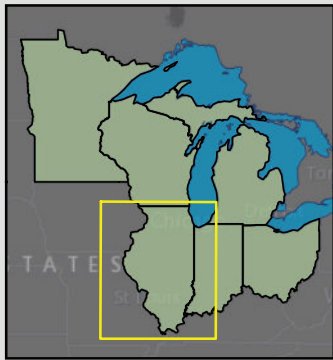
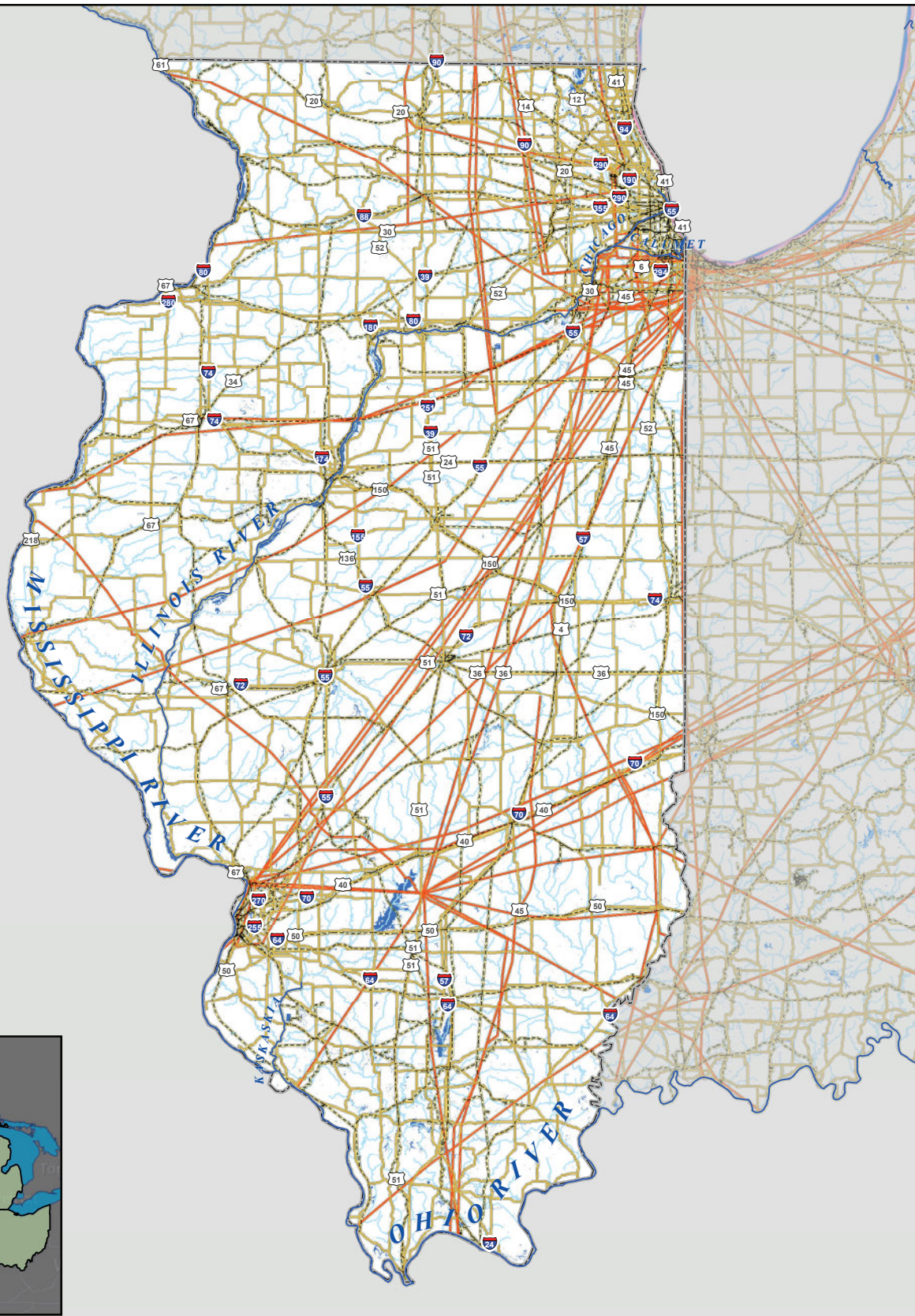


Figure 2. Spill Response Procedures (Appendix A of the MOA)



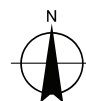


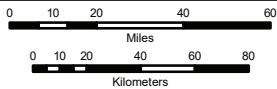
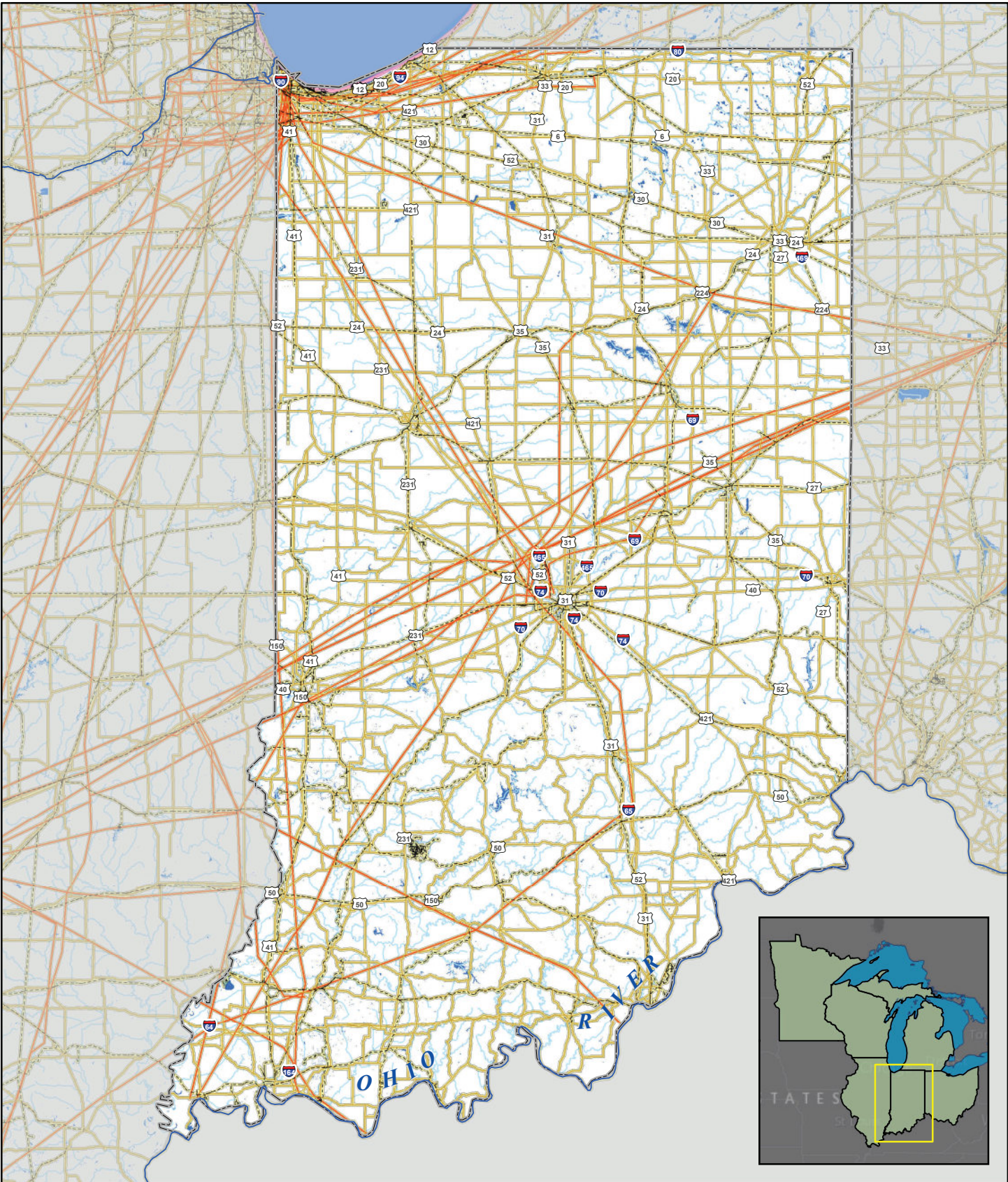
OVERVIEW OF ILLINOIS ACTION AREA

SCALE 1:3,900,000



- Petroleum Pipeline
- Commercial Navigable Waterway
- Lakes & Ponds
- Major Road
- Rivers & Streams
- 1-Mile Coastal Inland Buffer
- - - Railroad
- Action Area





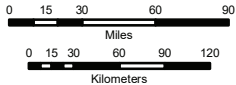
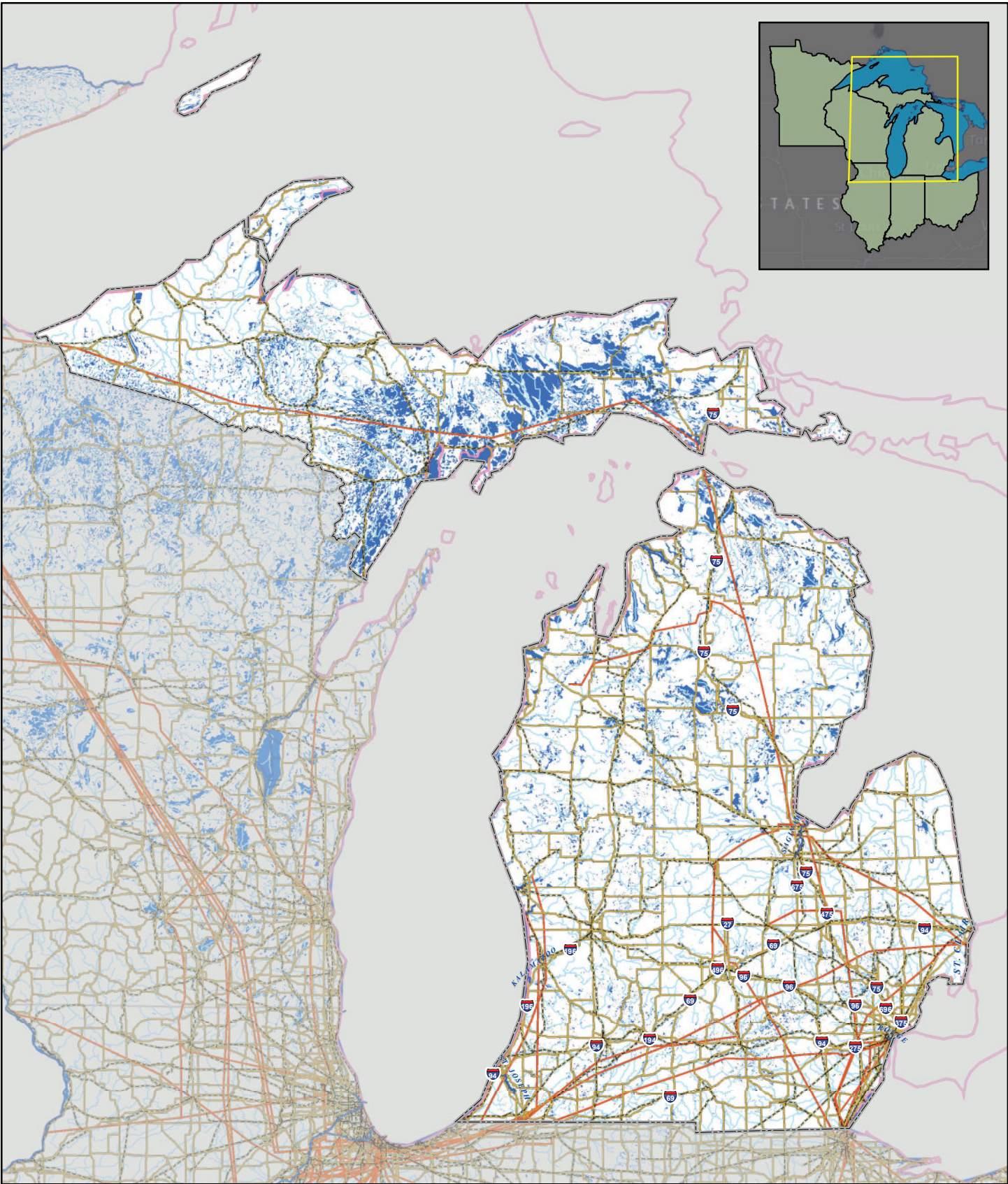
OVERVIEW OF INDIANA ACTION AREA

SCALE 1:2,800,000



- Petroleum Pipeline
- Commercial Navigable Waterway
- Lakes & Ponds
- Major Road
- Rivers & Streams
- 1-Mile Coastal Inland Buffer
- - - Railroad
- Action Area





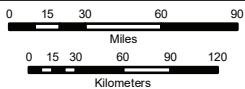
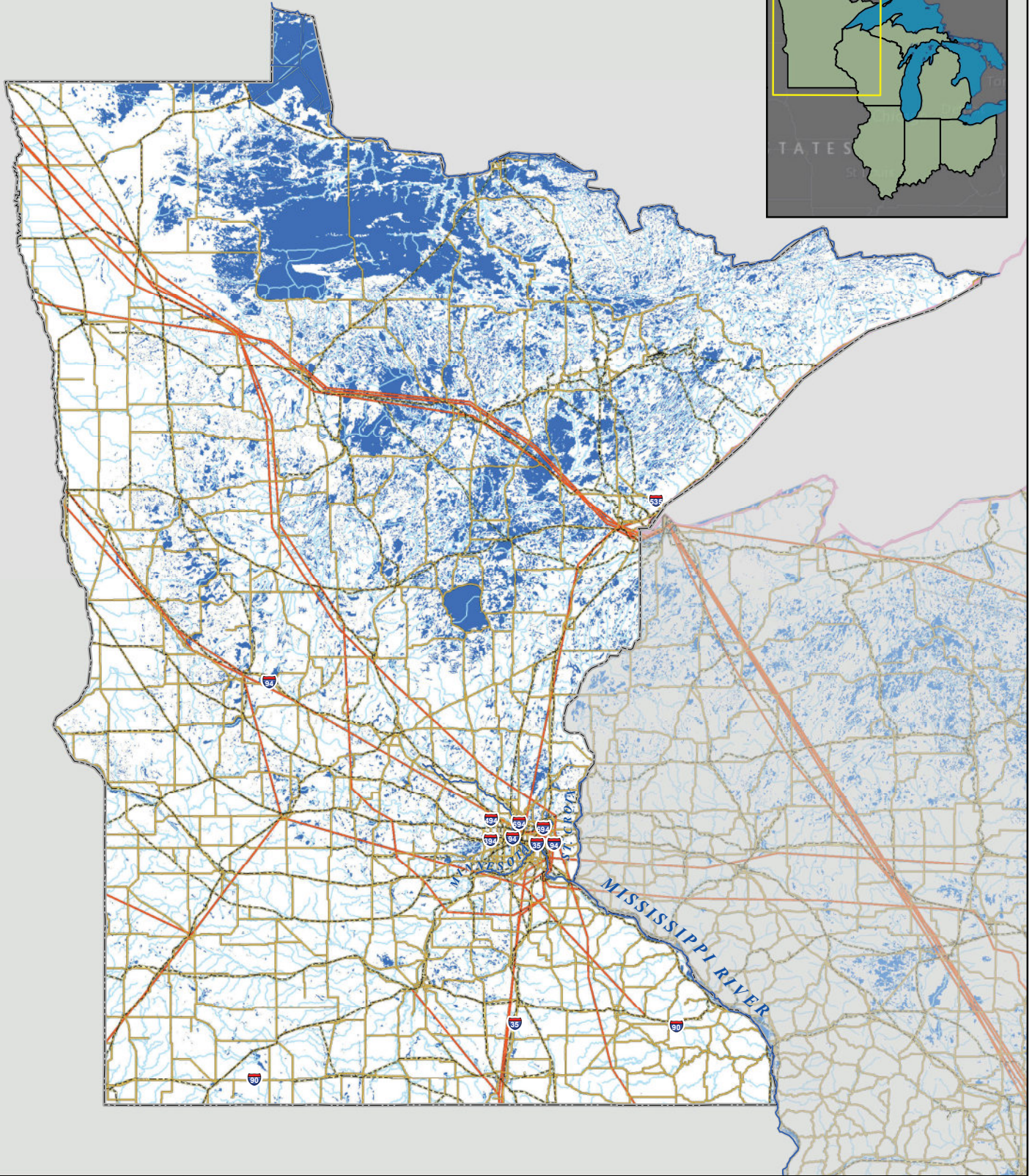
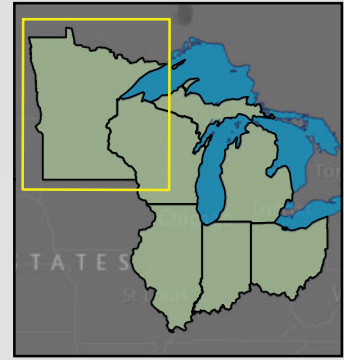
OVERVIEW OF MICHIGAN ACTION AREA

SCALE 1:5,000,000



- Petroleum Pipeline
- Major Road
- - - Railroad
- Commercial Navigable Waterway
- Rivers & Streams
- Lakes & Ponds
- 1-Mile Coastal Inland Buffer
- Action Area



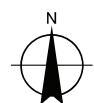


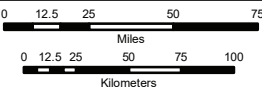
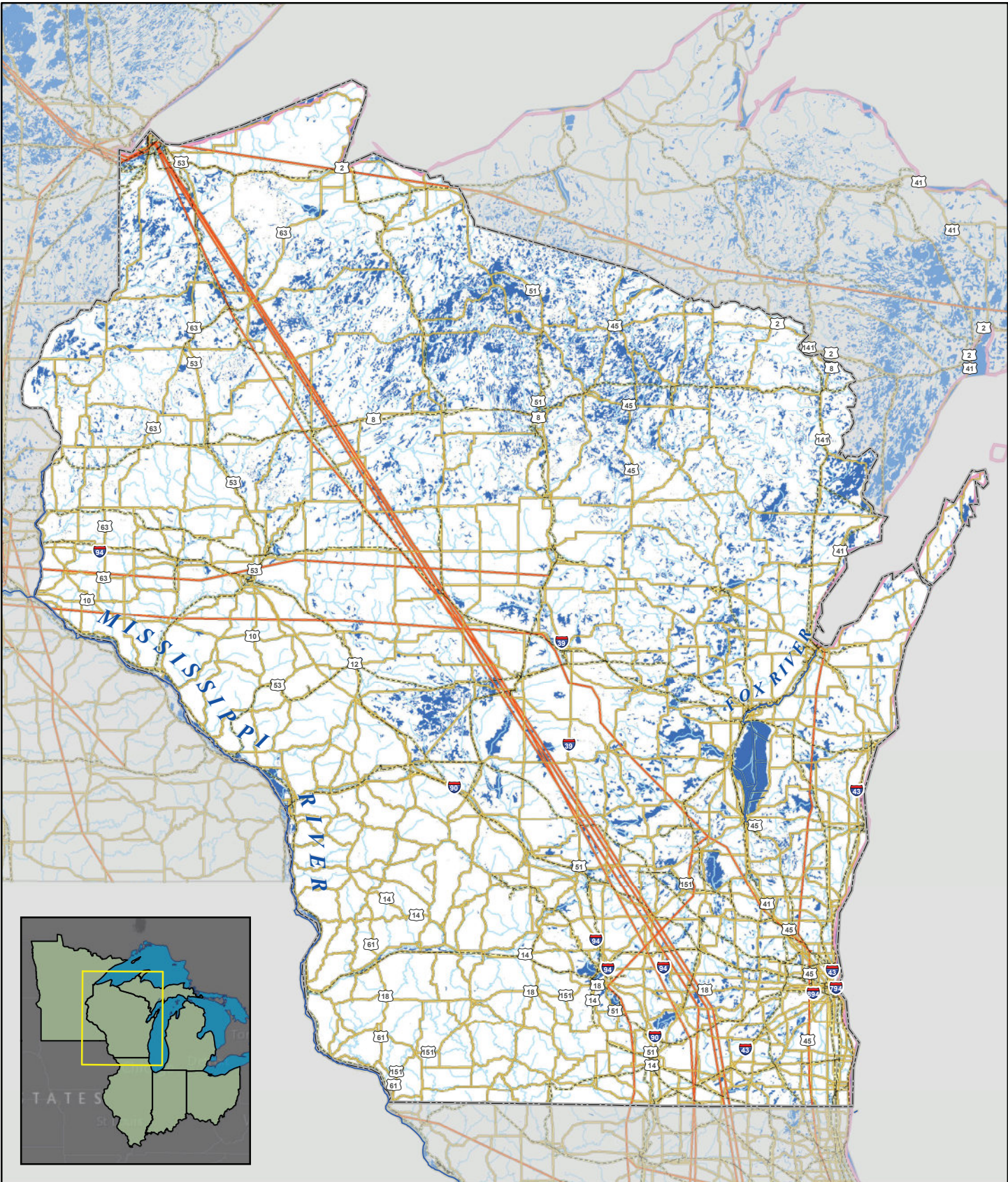
OVERVIEW OF MINNESOTA ACTION AREA

SCALE 1:4,800,000



- Petroleum Pipeline
- Commercial Navigable Waterway
- Lakes & Ponds
- Major Road
- Rivers & Streams
- 1-Mile Coastal Inland Buffer
- Action Area
- - - Railroad



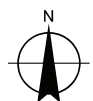


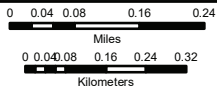
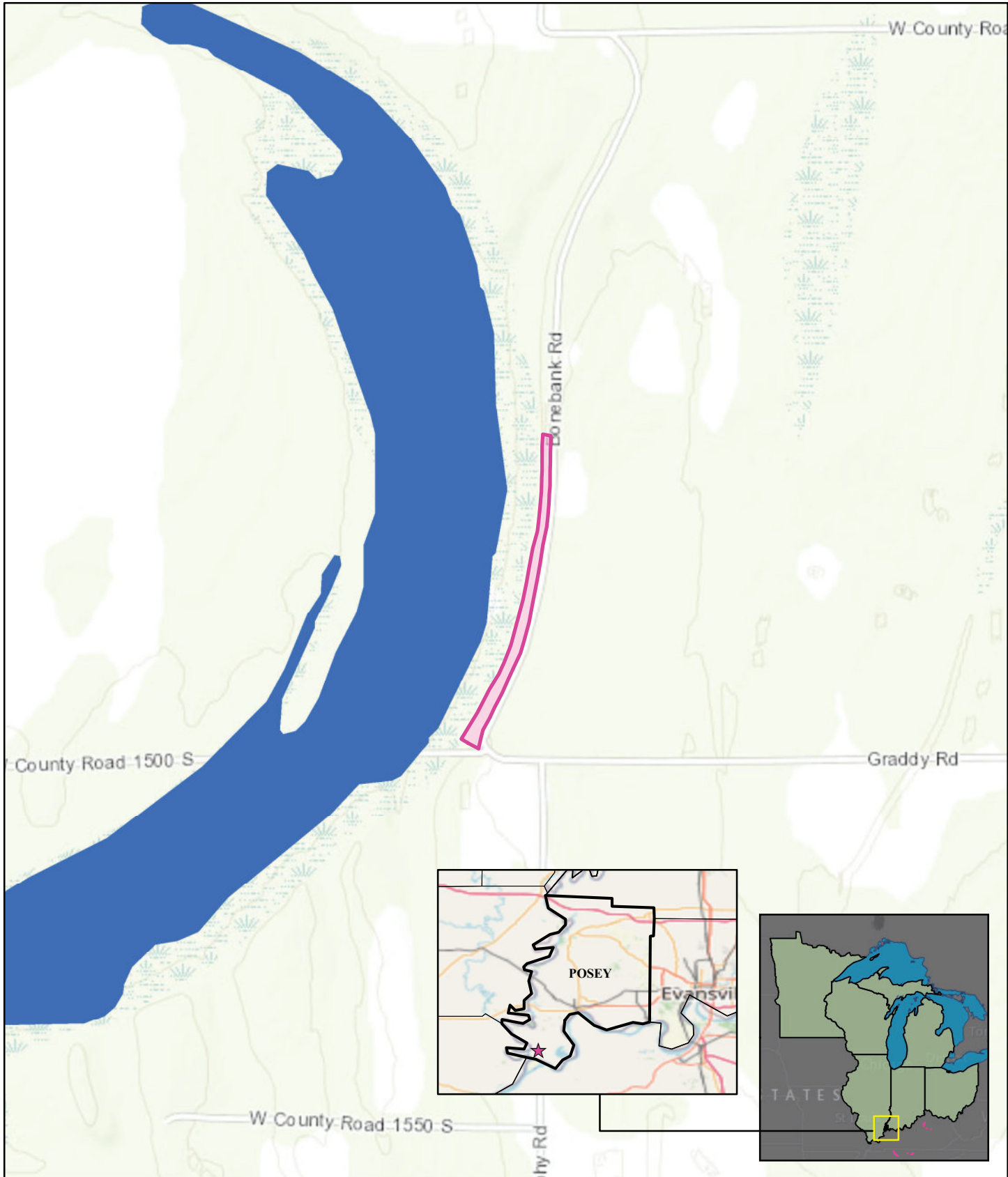
OVERVIEW OF WISCONSIN ACTION AREA

SCALE 1:3,600,000



- Petroleum Pipeline
- Commercial Navigable Waterway
- Lakes & Ponds
- Major Road
- Rivers & Streams
- 1-Mile Coastal Inland Buffer
- - - Railroad
- Action Area



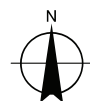


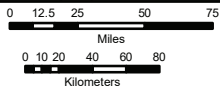
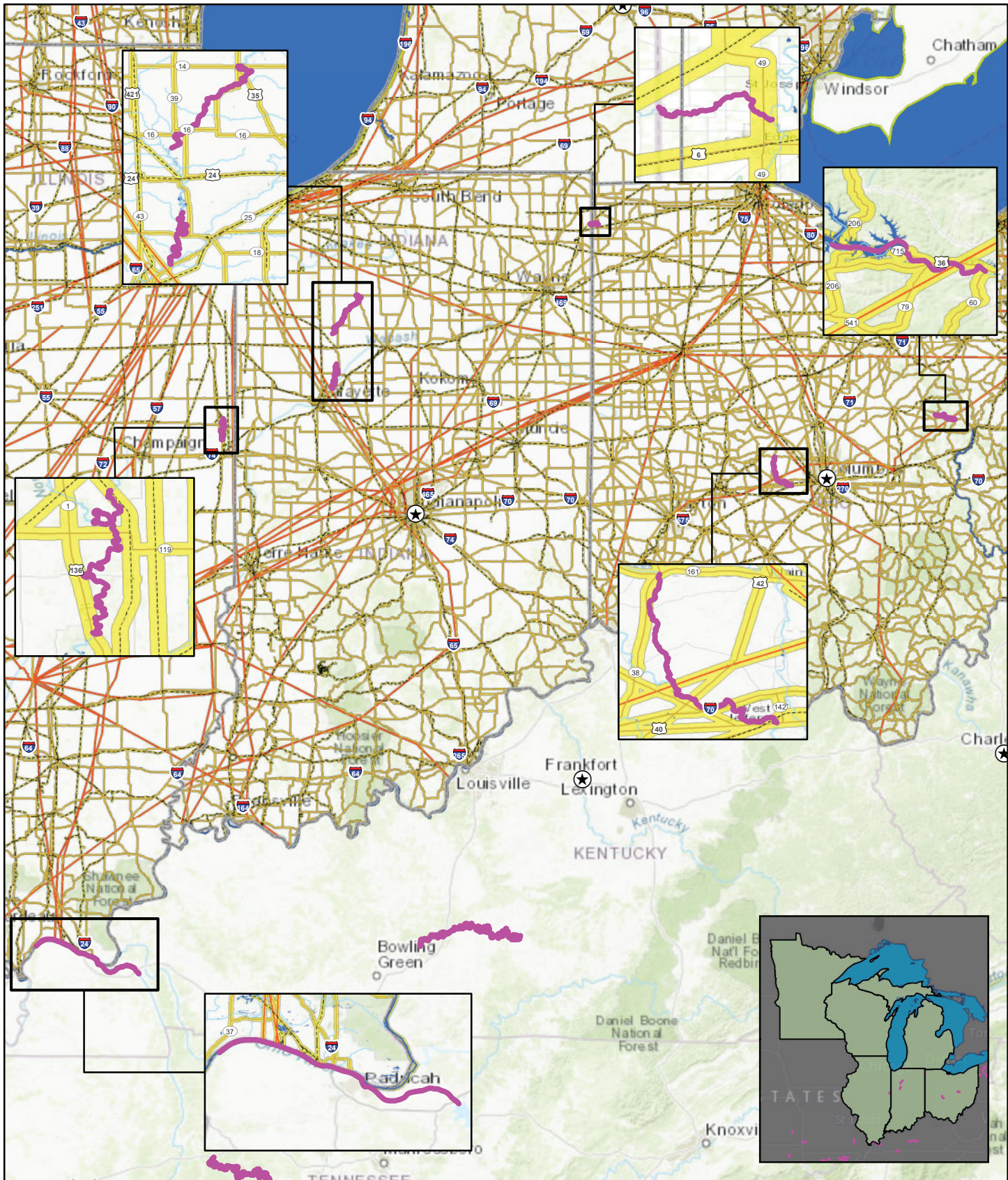
**SHORT'S BLADDERPOD (*PHYSARIA GLOBOSA*)
CRITICAL HABITAT IN ACTION AREA**

SCALE 1:15,000



- Petroleum Pipeline
- Commercial Navigable Waterway
- Major Road
- Rivers & Streams
- - - Railroad
- Lakes & Ponds
- 1-Mile Coastal Inland Buffer
- Action Area
- Short's Bladderpod (*Physaria globosa*) Critical Habitat

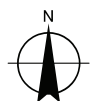


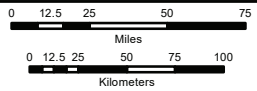
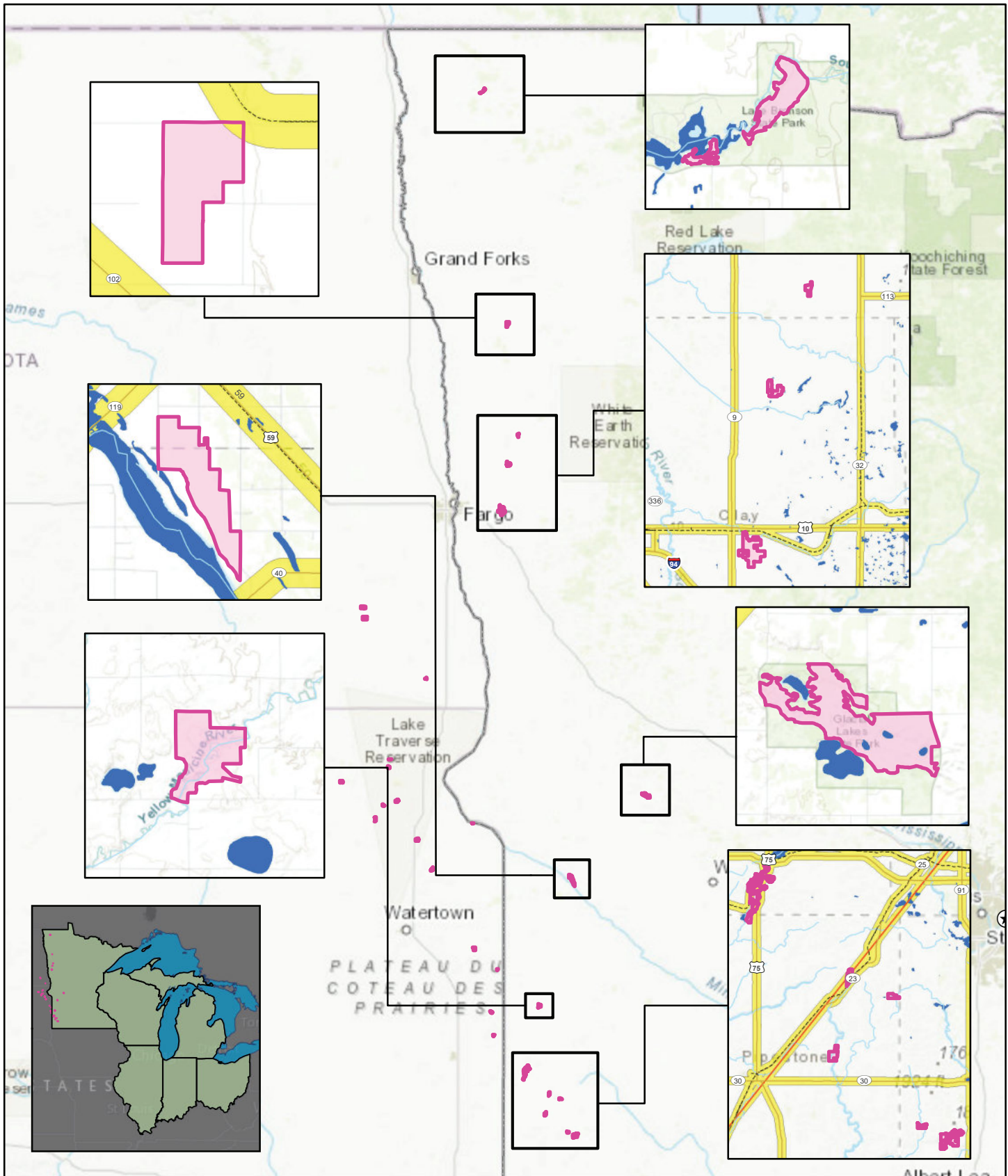


**RABBITSFOOT (*QUADRULA CYLINDRICA CYLINDRICA*)
CRITICAL HABITAT IN ACTION AREA**

SCALE 1:4,500,000

- | | | |
|----------------------|---------------------------------|---|
| — Petroleum Pipeline | — Commercial Navigable Waterway | — Action |
| — Major Road | — Rivers & Streams | — Rabbitsfoot (<i>Quadrula cylindrica cylindrica</i>)
Critical Habitat |
| - - - Railroad | — Lakes & Ponds | |
| | — 1-Mile Coastal Inland Buffer | |



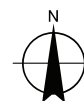


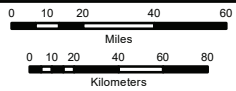
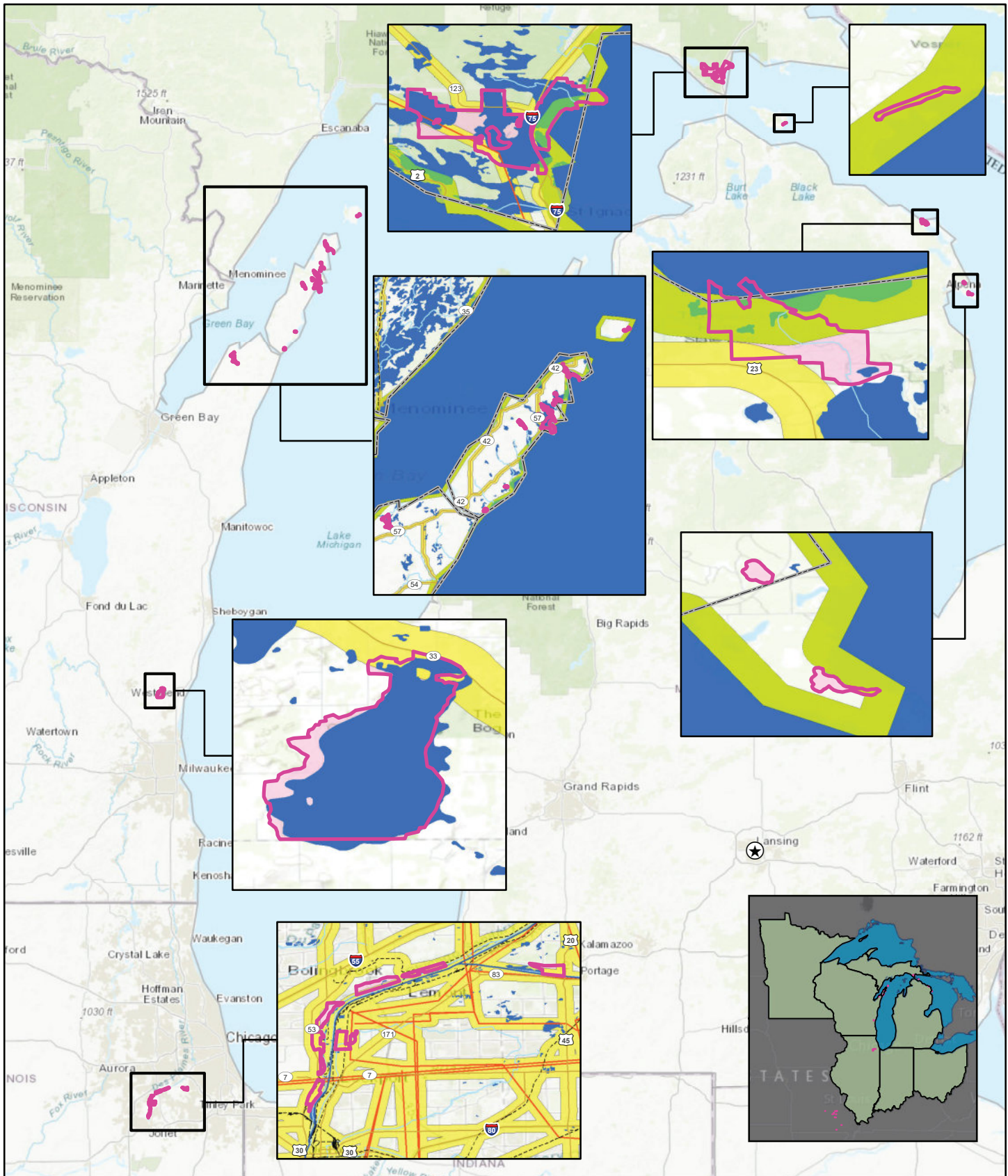
**DAKOTA SKIPPER (*HESPERIA DACOTAE*)
CRITICAL HABITAT IN ACTION AREA**

SCALE 1:3,900,000



- Petroleum Pipeline
- Commercial Navigable Waterway
- 1-Mile Coastal Inland Buffer
- Major Road
- Rivers & Streams
- Action Area
- - - Railroad
- Lakes & Ponds
- Dakota Skipper (*Hesperia dacotae*) Critical Habitat



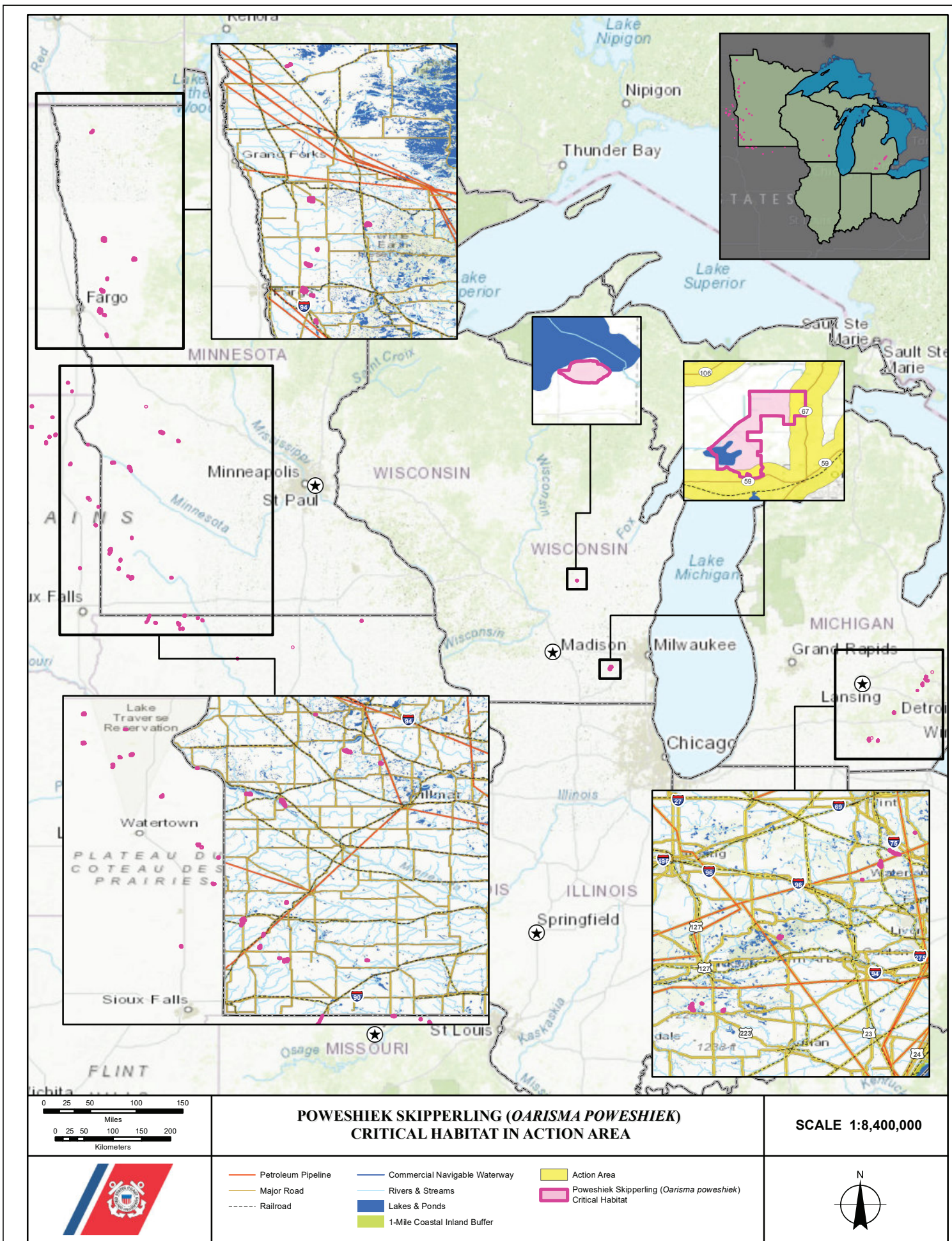


**HINE'S EMERALD DRAGONFLY (*SOMATOCHLORA HINEANA*)
CRITICAL HABITAT IN ACTION AREA**

SCALE 1:3,400,000

- | | | |
|--------------------|-------------------------------|---|
| Petroleum Pipeline | Commercial Navigable Waterway | Action Area |
| Major Road | Rivers & Streams | Hine's Emerald Dragonfly (<i>Somatochlora hineana</i>) Critical Habitat |
| Railroad | Lakes & Ponds | |
| | 1-Mile Coastal Inland Buffer | |

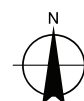


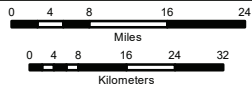
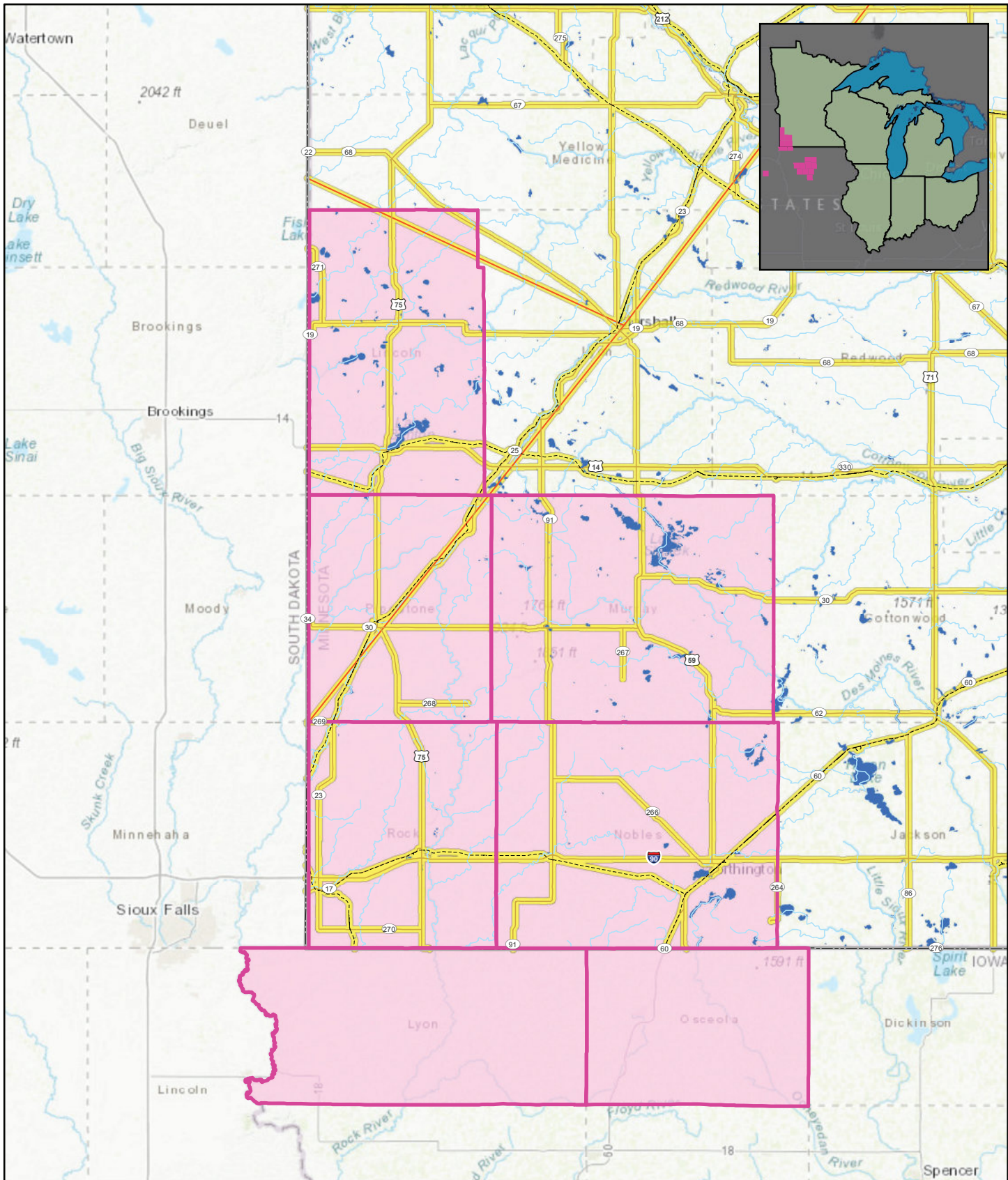


**POWESHIEK SKIPPERLING (*OARISMA POWESHIEK*)
CRITICAL HABITAT IN ACTION AREA**

SCALE 1:8,400,000

- | | | |
|--------------------|-------------------------------|---|
| Petroleum Pipeline | Commercial Navigable Waterway | Action Area |
| Major Road | Rivers & Streams | Poweshiek Skipperling (<i>Oarisma poweshiek</i>) Critical Habitat |
| Railroad | Lakes & Ponds | |
| | 1-Mile Coastal Inland Buffer | |



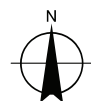


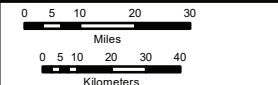
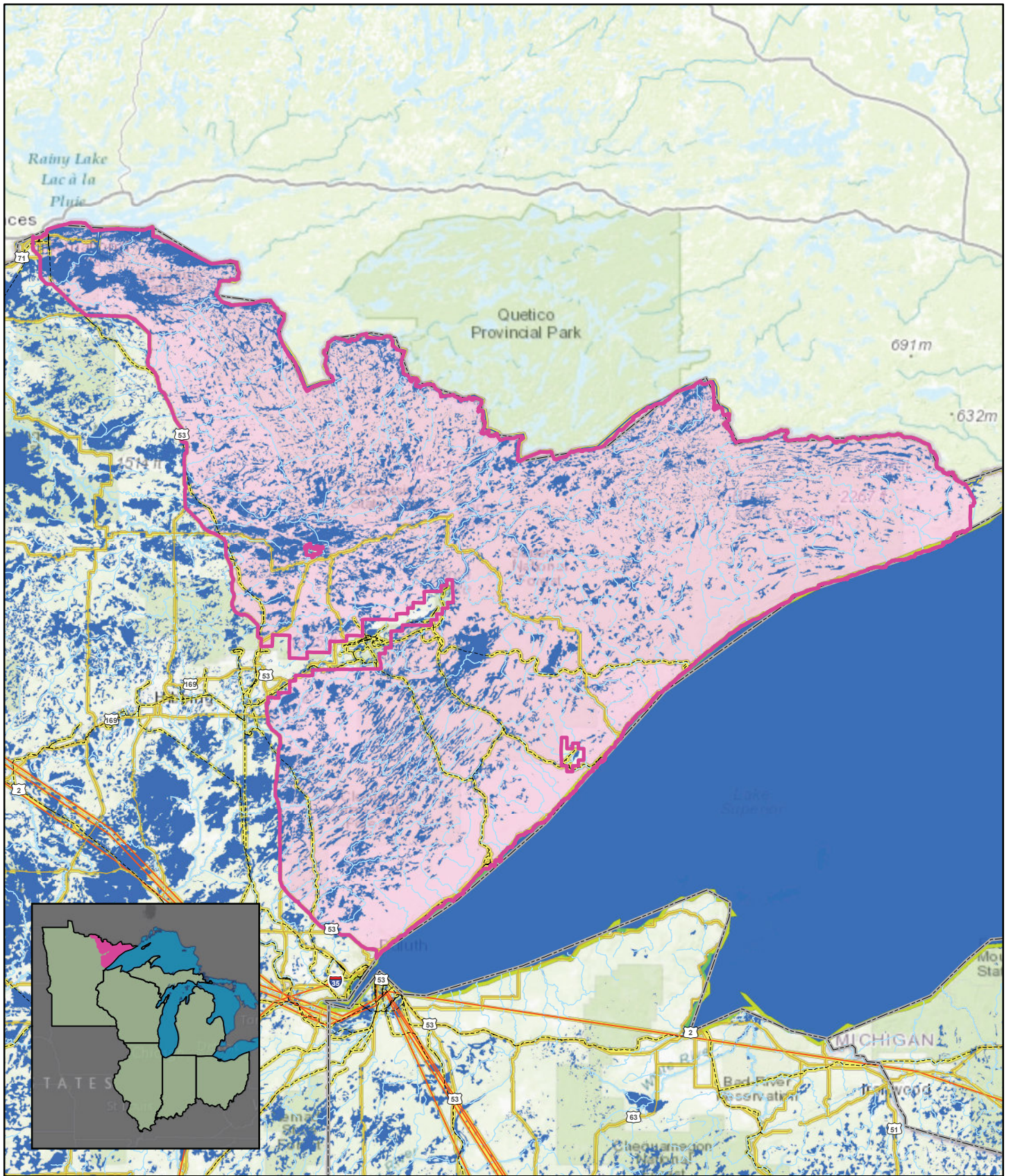
**TOPEKA SHINER (*NOTROPIS TOPEKA*)
CRITICAL HABITAT IN ACTION AREA**

SCALE 1:1,250,000



- Petroleum Pipeline
- Commercial Navigable Waterway
- Action Area
- Major Road
- Rivers & Streams
- Topeka Shiner (*Notropis topeka*) Critical Habitat
- - - - Railroad
- Lakes & Ponds
- 1-Mile Coastal Inland Buffer



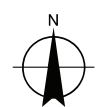


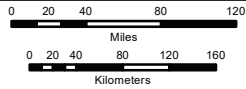
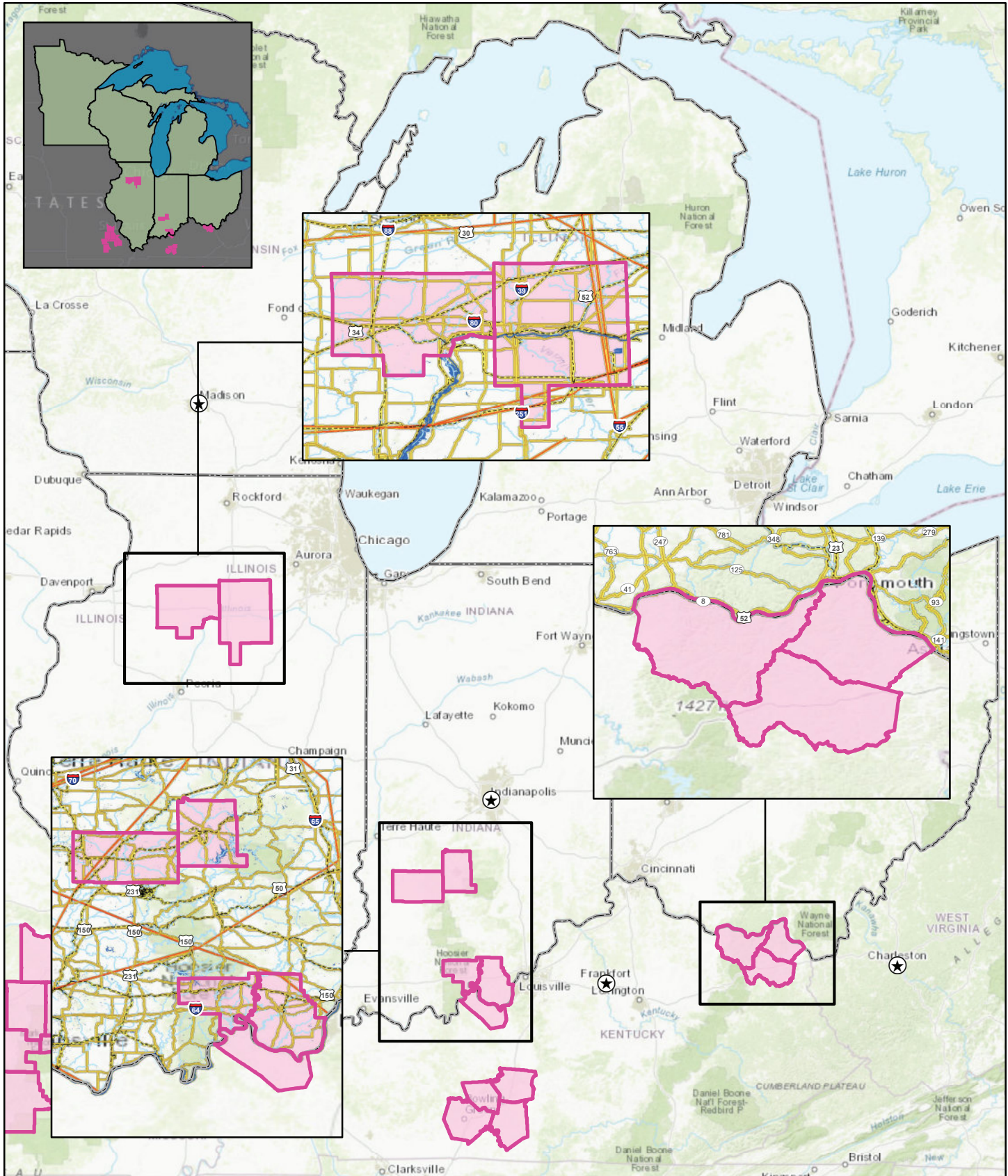
**CANADA LYNX (*LYNX CANADENSIS*)
CRITICAL HABITAT IN ACTION AREA**

SCALE 1:2,200,000



- Petroleum Pipeline
- Major Road
- - - Railroad
- Commercial Navigable Waterway
- Rivers & Streams
- Lakes & Ponds
- 1-Mile Coastal Inland Buffer
- Action Area
- Canada Lynx (*Lynx canadensis*) Critical Habitat



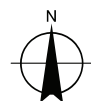


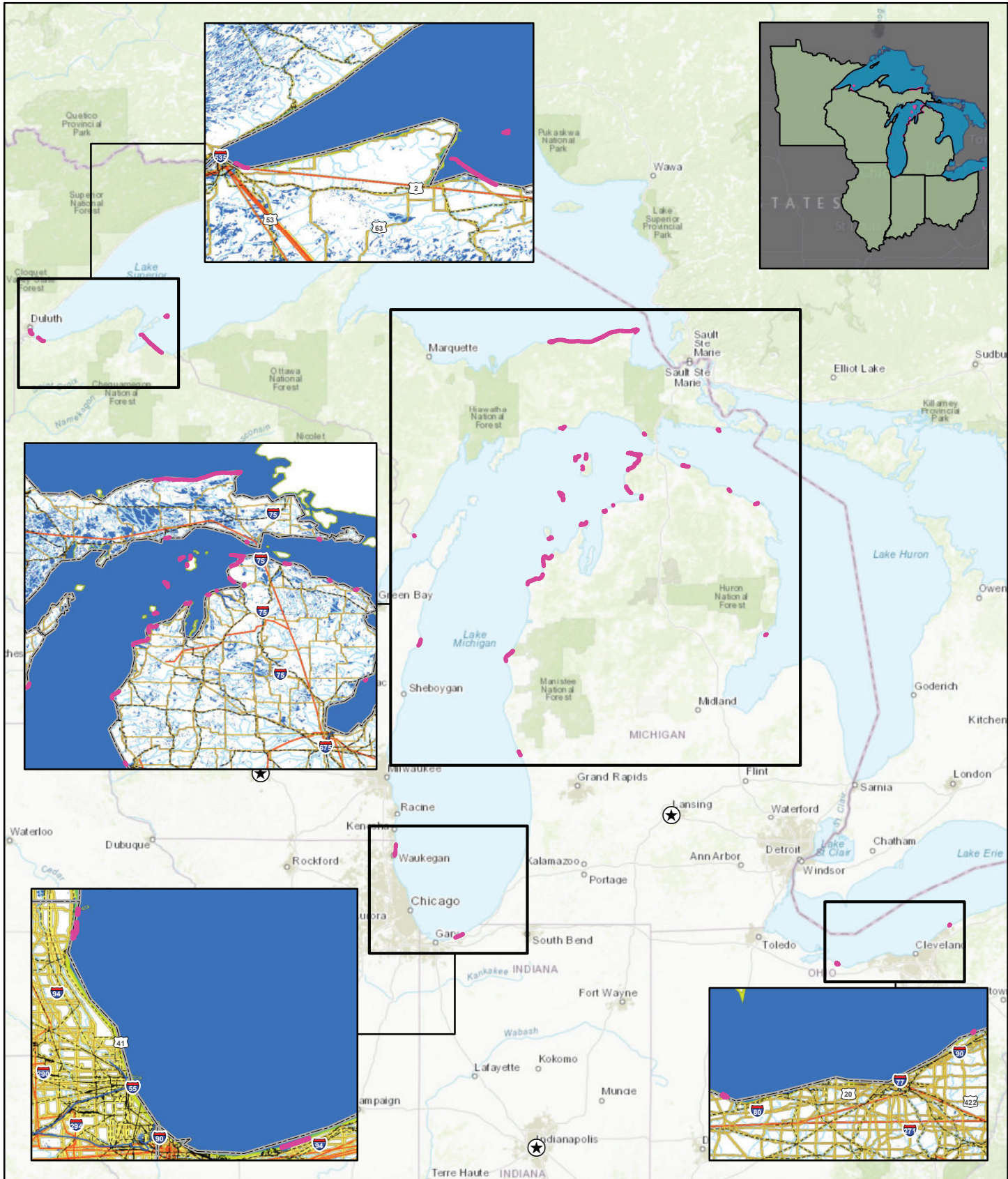
**INDIANA BAT (*MYOTIS SODALIS*)
CRITICAL HABITAT IN ACTION AREA**

SCALE 1:6,500,000



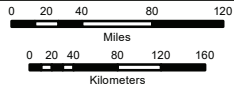
- Petroleum Pipeline
- Commercial Navigable Waterway
- Action Area
- Major Road
- Rivers & Streams
- Indiana Bat (*Myotis sodalis*) Critical Habitat
- - - Railroad
- Lakes & Ponds
- 1-Mile Coastal Inland Buffer





**PIPING PLOVER (*CHARADRIUS MELODUS*)
CRITICAL HABITAT IN ACTION AREA**

SCALE 1:6,900,000



- Petroleum Pipeline
- Commercial Navigable Waterway
- Action Area
- Major Road
- Rivers & Streams
- Piping Plover (*Charadrius melodus*) Critical Habitat
- - - Railroad
- Lakes & Ponds
- 1-Mile Coastal Inland Buffer

